

3200 PATRICK HENRY DR
SANTA CLARA
FOR LEASE



CONTACT: ZAF LAKHANI (408)568-6202
hzproperties@yahoo.com

PROPERTY HIGHLIGHTS

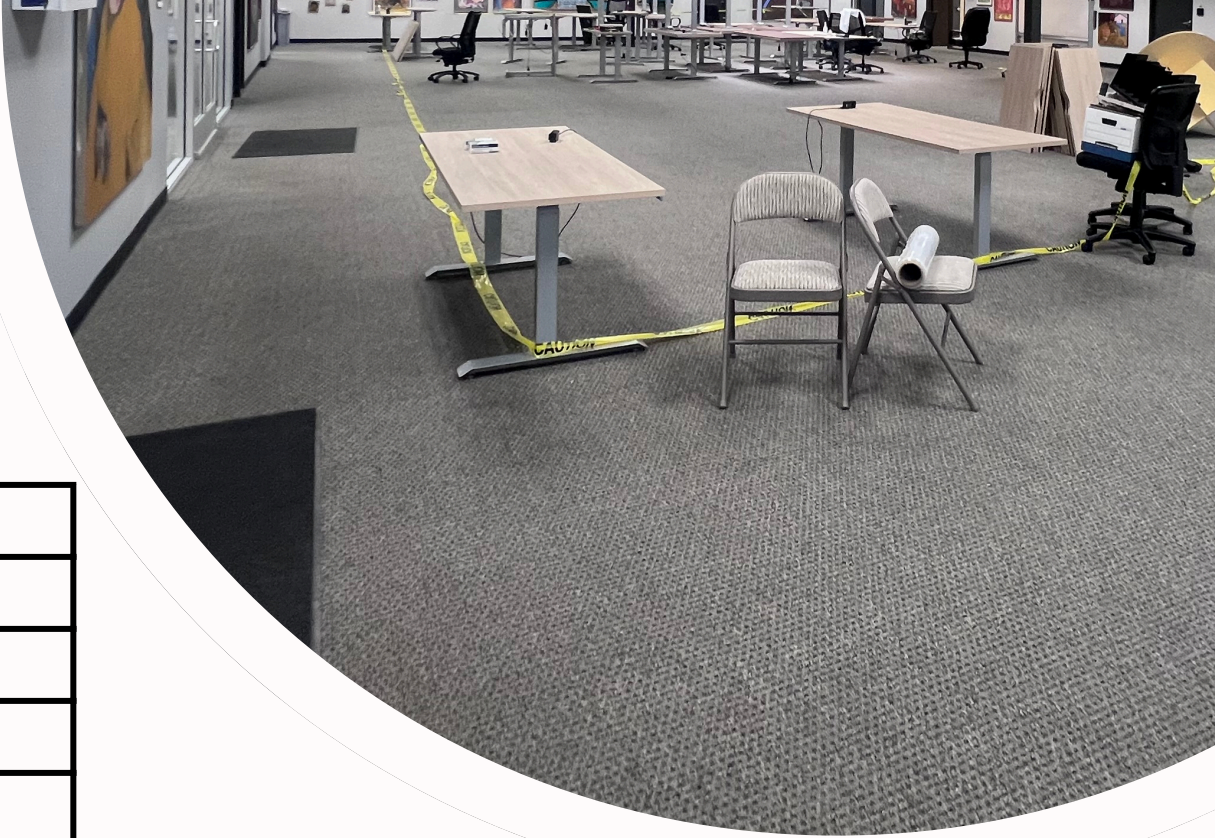
- High-Power Multi-Tenant Commercial Property in Prime Santa Clara Location.
- Easy access to Highways 101, 280, and 87—as well as Mineta San Jose International Airport—
- Key Highlights- Robust Power Supply: 3,000 amps at 277/480V, ideal for a range of industries requiring high-demand operations.-
- Flexible Spaces: Perfect for both tech and non-tech businesses, offering adaptable layouts to meet diverse needs.-



UNIT HIGHLIGHTS

150

Rental Rate	\$1.65
Date Available	Sep 1, 2025
Service type	NNN
Space USE	FLEX
Lease Term	Negotiable

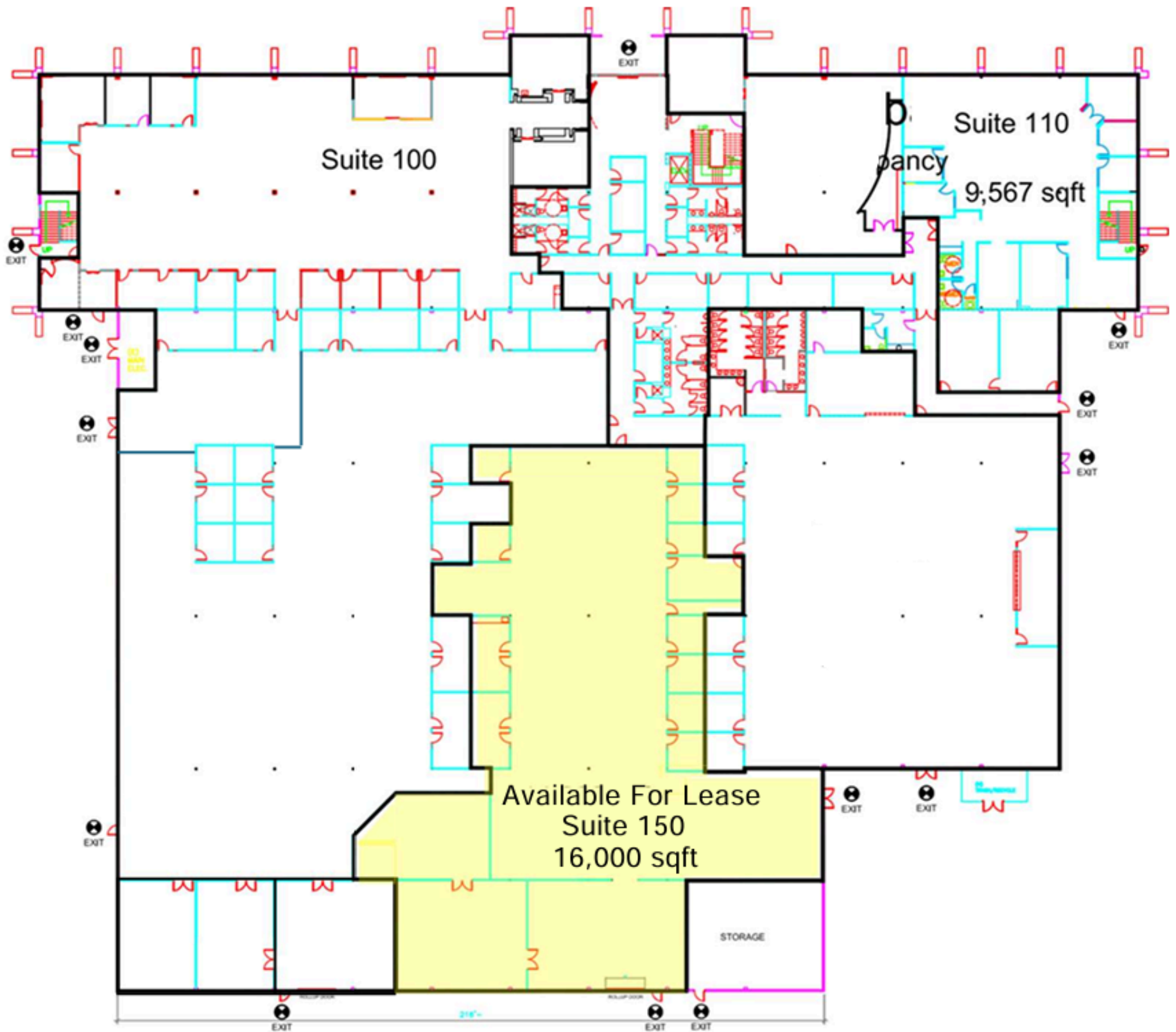


- Ready-to-go commercial space designed to jumpstart your operations from day one.
- This fully built-out office comes complete with preinstalled network cables, saving you the time and cost of extensive setup.

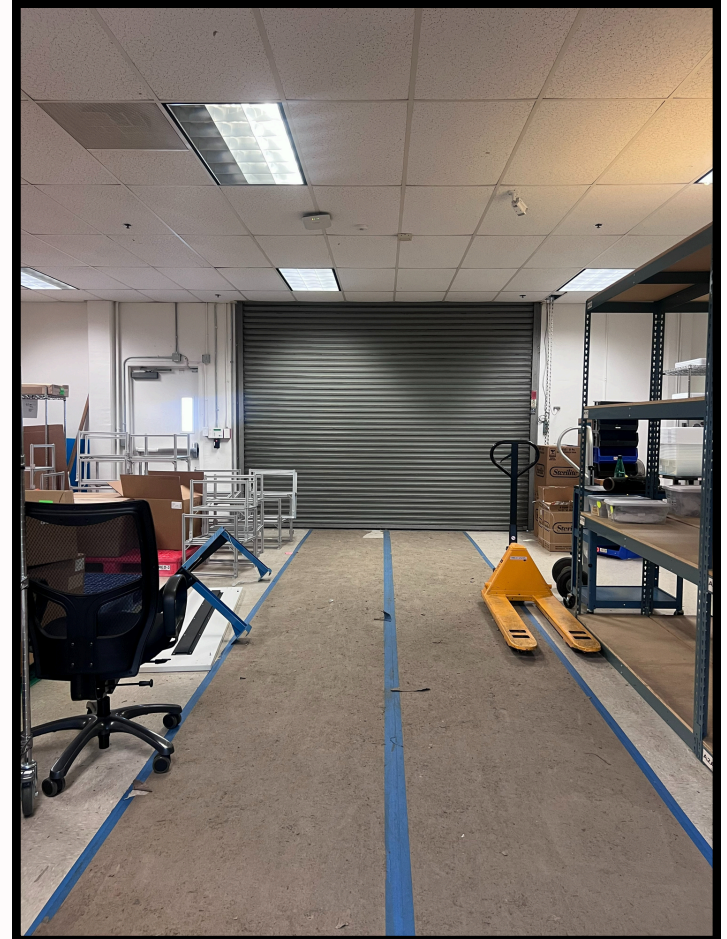
Key Features:

- Private Access
- Secure entry for employees and clients.
- Maintain optimal comfort and productivity year-round with dedicated heating and cooling systems.
- Convenient Break Room
- Reliable 480 V supply with transformer delivering 200 amps at 240 V—ideal for manufacturing, tech, or energy-intensive tenants.

AVAILABLE UNIT



PHOTOS:



PHOTOS:

