

FOR LEASE

27123 - 9, HWY 597
LACOMBE COUNTY, AB



PROPERTY Details

LOCATION

Burbank Industrial Park (Near Blackfalds)

LEGAL DESCRIPTION

Plan 0121471, Block 2, Lots 4

SITE SIZE

2.02 Acres

BUILDING SIZE

9,640 SF

ZONING

Business Industrial District (I-BI)

LEASE RATE

\$13.00 PSF

ADDITIONAL RENT

\$1.71 PSF

MONTHLY RENT

\$11,817.03 + GST

POSSESSION

Immediate



PROPERTY OVERVIEW

Positioned on 2.02 acres in Burbank Industrial Park, this 9,640SF freestanding industrial building offers a functional layout and convenient regional access.

The main floor includes a reception area, two offices, two washrooms (including one located on the shop side), and a shop storage room supporting day-to-day operations. Windows along the building front provide natural light to the office and reception areas.

A large shop area features eight total overhead doors, two drive-through bays, one of which had been utilized as a wash bay in the past, allowing efficient equipment movement and workflow for service, manufacturing, or logistics users.

The mostly-developed mezzanine includes an open storage (or staff lunch) area and three additional offices, including one larger office with storage.

Zoned Business Industrial District (I-BI) and serviced with well and septic, the building is situated on the east side of the industrial park in the north corner. The location offers quick access to Highway QE2, Highway 2A and Highway 597, with convenient connections to both Blackfalds and Red Deer within minutes.

CEILING HEIGHT

Approx. 25' height at the front and approx. 22' at the back

LOADING

(8) 14' x 16' Overhead Doors (6 at the rear of the building and 2 at the front), some with power openers
Two Drive Thru Bays

POWER

3 Phase Power

HVAC

Radiant Heating

LIGHTING

Upgraded to LED

DRAINAGE

Trench Sump

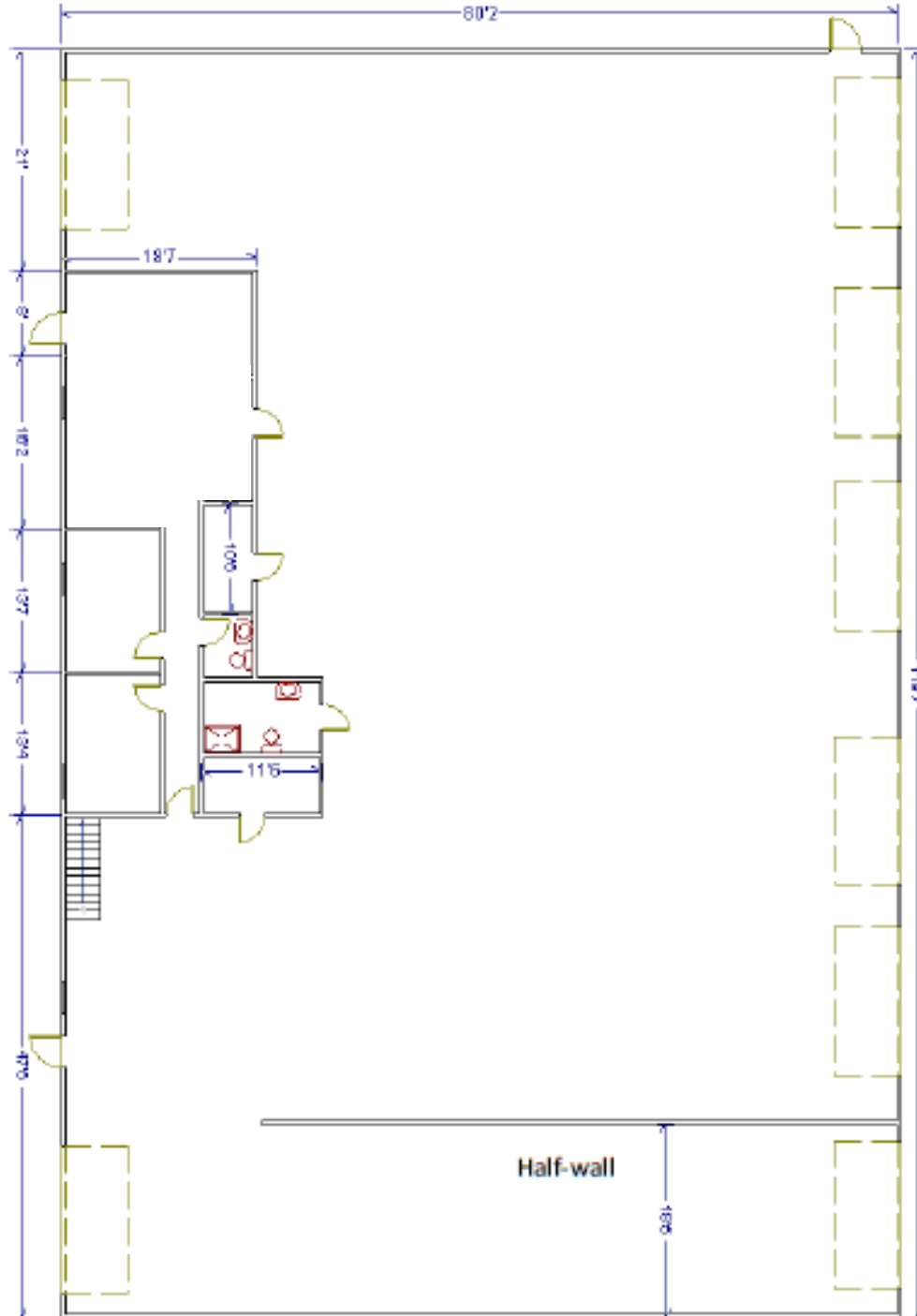
YARD

Graveled Throughout
Rear Yard Fenced

Note Landlord is completing repairs and cleanup, pictures have been taken during the process



Floor Plan





Central Alberta's Ambassador for Commercial Real Estate



#103, 4315 - 55 Avenue Red Deer, AB T4N 4N7
www.salomonscommercial.com

Mike Williamson
 Listing Agent
 403.314.6189
mike@salomonscommercial.com

Kelly Babcock
 Partner/Broker
 403.314.6188
kelly@salomonscommercial.com

Brett Salomons
 Partner
 403.314.6187
brett@salomonscommercial.com

Davin Kemshead
 Associate
 403.314.6190
davin@salomonscommercial.com

Max Field
 Associate
 403.314.6186
max@salomonscommercial.com

Jordan Krulicki
 Associate
 403.314.6185
jordan@salomonscommercial.com