

CHINO INDUSTRIAL CENTER

FOR SUBLEASE | 15969 EUCLID AVE. | CHINO, CA

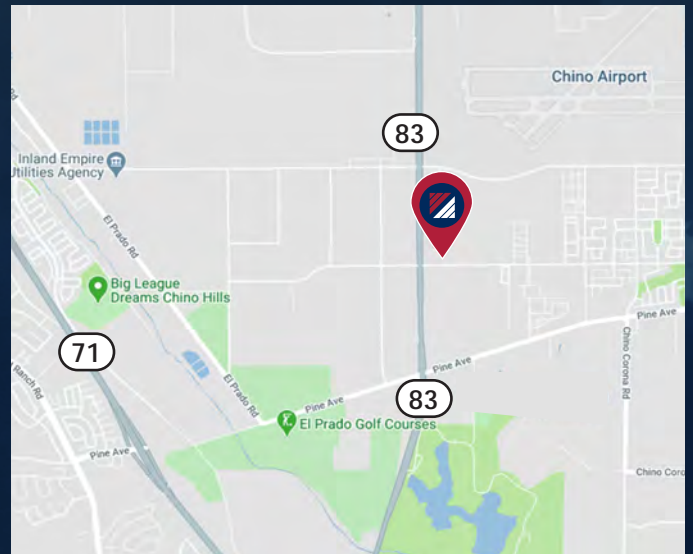
BLDG. 8

AVAILABLE 5.15.2026



FOR SUBLEASE ±21,843 SF INDUSTRIAL PROPERTY AVAILABLE

BUILDING SPECIFICATIONS	
	Bldg 8
Adresse	15969 Euclid Ave.
Total Building Area (SF)	±21,843
SITE AREA	±1.23 AC
Office (SF)	±1,995
Bay Spacing	60'x52'
Provided Car Parking	30
Dock Positions	2
Drive-in Door	1
Clear Height	26'
Service	400A Service 277/480V Expandable to 800A
Sprinkler Density	ESFR



FOR MORE INFORMATION, CONTACT:

KEN ANDERSEN, CCIM, SIOR
EXECUTIVE VICE PRESIDENT
C: 909.980.1234
KANDERSEN@DAUMCOMMERCIAL.COM
CA DRE: #00902084

GABE DUPLANTIER
ASSOCIATE
C: 714.421.9275
GDUPLANTIER@DAUMCOMMERCIAL.COM
CA DRE #02178517

D/AQ Corp. #01129558. Maps Courtesy ©Google & ©Microsoft. Although all information is furnished regarding for sale, rental or financing is from sources deemed reliable, such information has not been verified and no express representation is made nor is any to be implied as to the accuracy thereof, and it is submitted subject to errors, omissions, changes of price, rental or other conditions, prior sale, lease or financing, or withdrawal without notice.

ALERE
PROPERTY GROUP LLC

DAUM
COMMERCIAL REAL ESTATE SERVICES

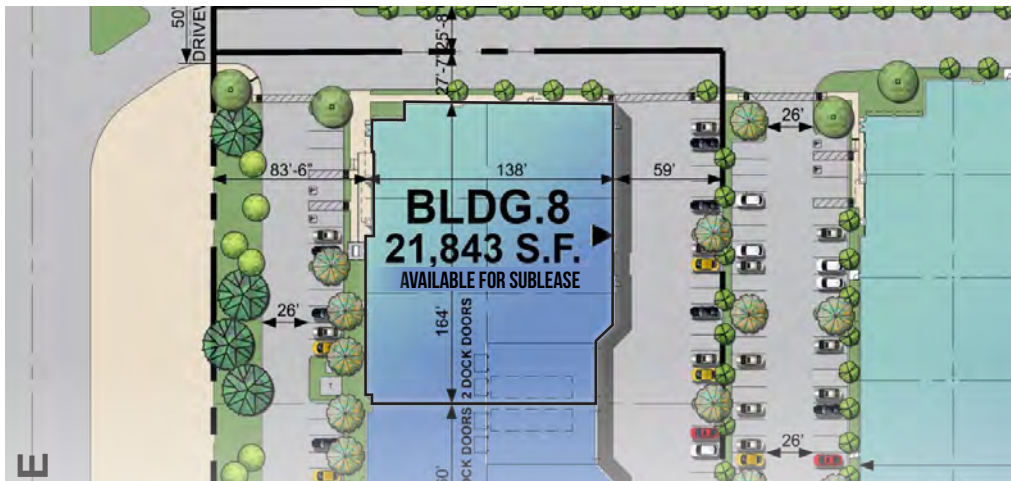
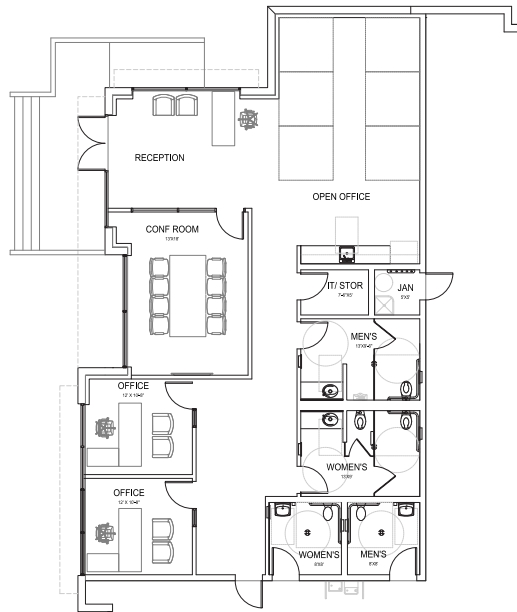
CHINO INDUSTRIAL CENTER

FOR SUBLEASE | 15969 EUCLID AVE. | CHINO, CA

BLDG. 8

AVAILABLE 5.15.2026

FLOOR & SITE PLANS



*NOT TO SCALE

FOR MORE INFORMATION, CONTACT:

KEN ANDERSEN, CCIM, SIOR
EXECUTIVE VICE PRESIDENT
C: 909.980.1234
KANDERSEN@DAUMCOMMERCIAL.COM
CA DRE: 00902084

GABE DUPLANTIER
ASSOCIATE
C: 714.421.9275
GDUPLANTIER@DAUMCOMMERCIAL.COM
CA DRE #02178517

D/AQ Corp. #01129558. Maps Courtesy ©Google & ©Microsoft. Although all information is furnished regarding for sale, rental or financing is from sources deemed reliable, such information has not been verified and no express representation is made nor is any to be implied as to the accuracy thereof, and it is submitted subject to errors, omissions, changes of price, rental or other conditions, prior sale, lease or financing, or withdrawal without notice.

ALERE
PROPERTY GROUP LLC

DAUM
COMMERCIAL REAL ESTATE SERVICES