

# 925

L STREET SACRAMENTO, CA

EXPERIENCE 925 L ST



## MOVE-IN READY SUITES STEPS AWAY FROM THE CAPITOL

# BUILDING HIGHLIGHTS



Shared amenities with The Senator, including brand new Fitness Center



Located in the heart of the Governmental Affairs District



Direct access to City Parking Garage through enclosed skywalk



Steps away from the State Capitol



Security on-site 24 hours, seven days a week



Complimentary bicycles available for daily use



New secured bike storage room



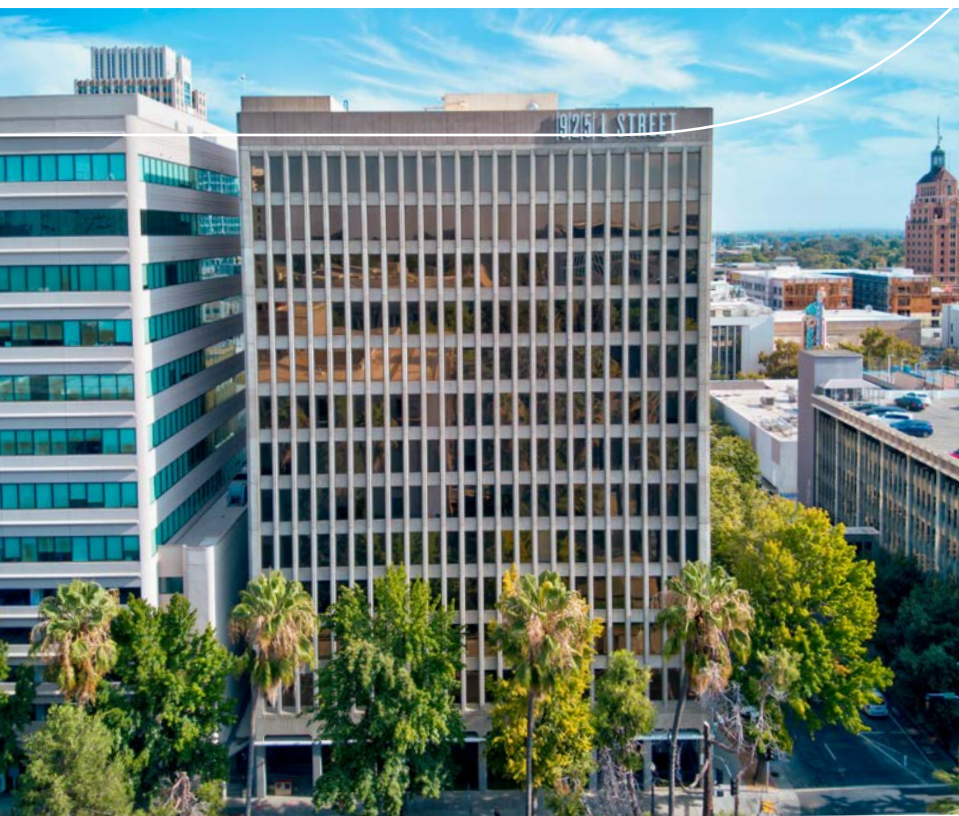
Building conference room (seats 12-14)



Move-in ready suites



Dedicated team of professional property management and engineering



# AVAILABILITIES

## Suite 300

± 1,624 RSF



## Suite 250

± 2,713 RSF

## Suite 1402

± 1,790 RSF



## Suite 100

± 3,174 RSF

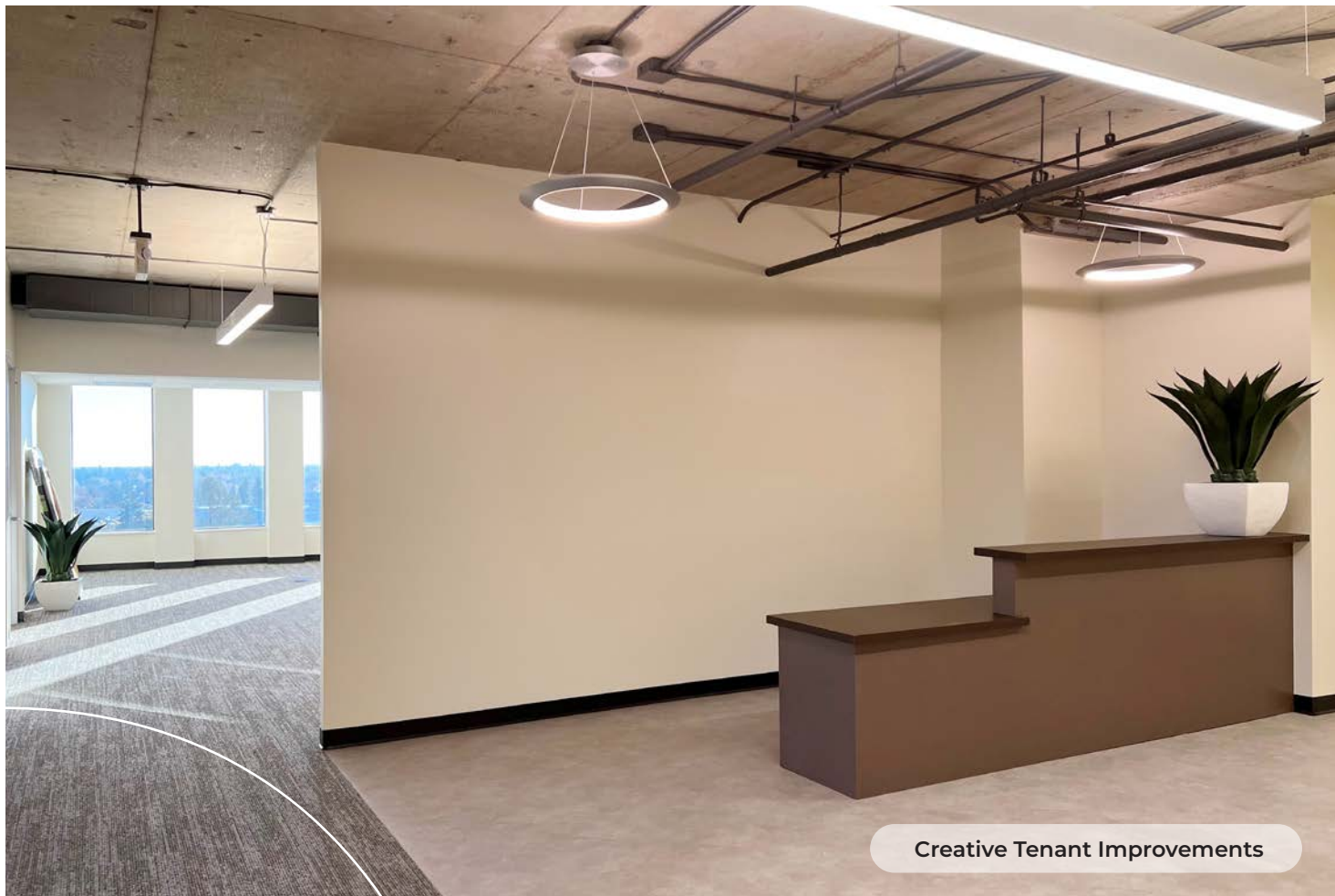
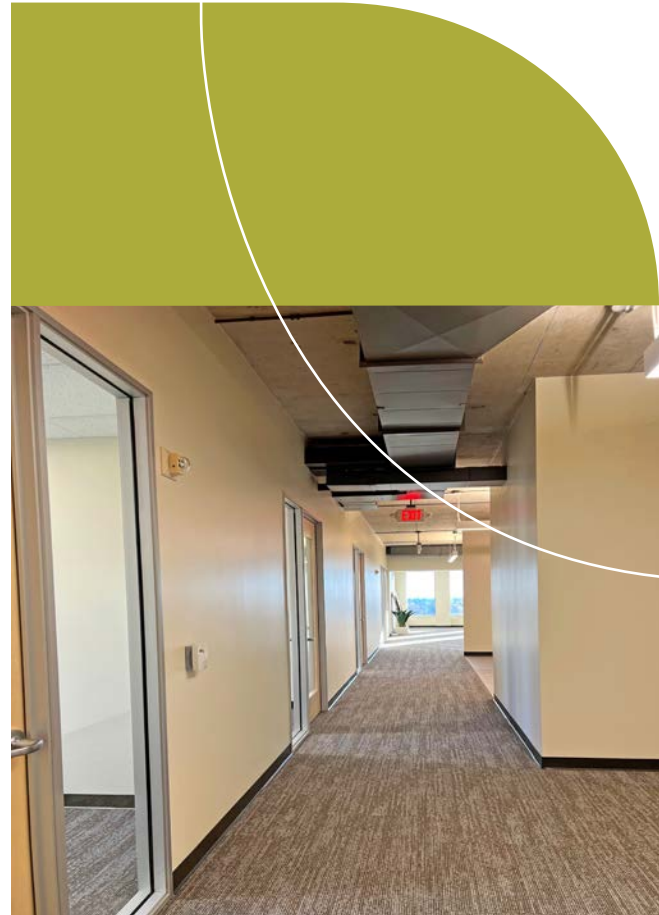


## Suite 150

± 2,331 RSF



# INTERIOR SUITE PHOTOS



# BUILDING FACTS



**Gold LEED** Certification



**Seagate Properties**  
owns and manages  
the building



**14** floors



**Digital Tenant  
Directory** located in  
building lobby



**12,500 SF** average  
floor plates



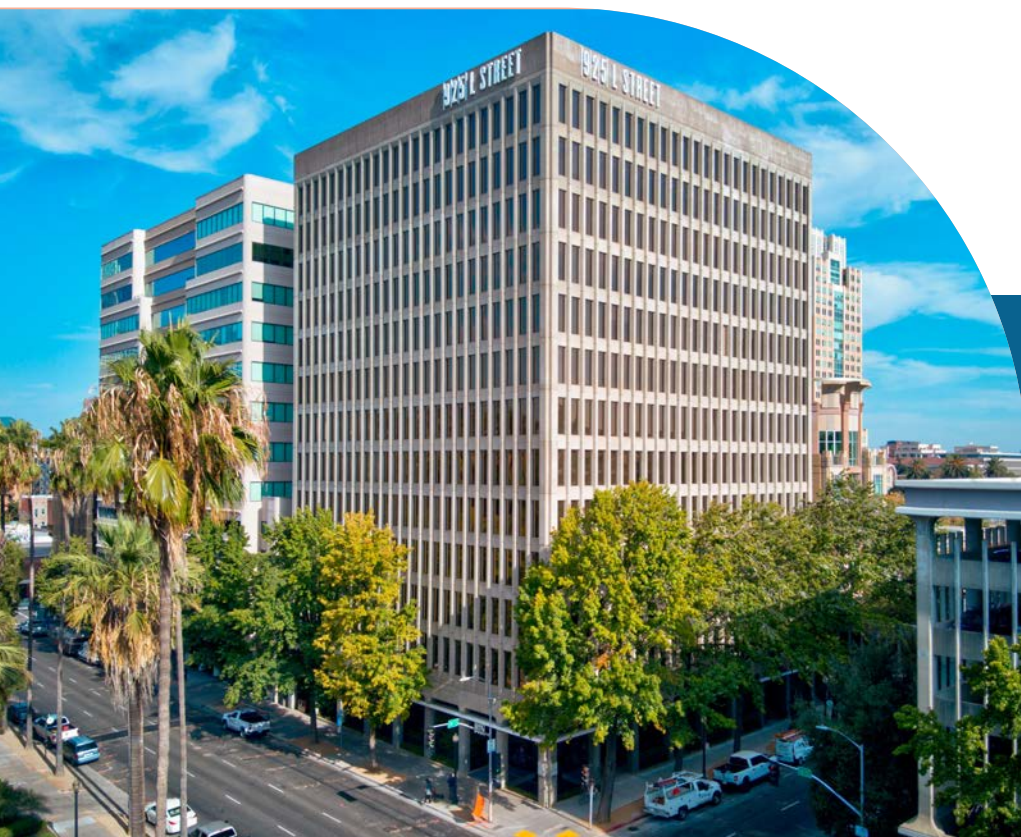
**168,847 SF** of net  
rentable area



**11'16"** floor-to-floor heights  
**17'** first-floor height  
**12'** lower-level height



**4** passenger elevators



925

L STREET SACRAMENTO, CA

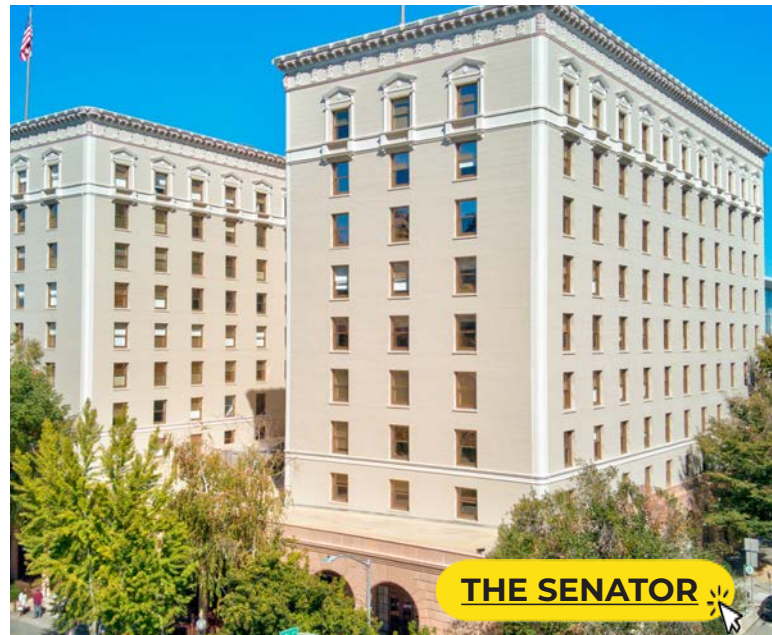
THE SENATOR

1121 L STREET

# EXPERIENCE THE SHARED AMENITIES AT 925 L STREET AND THE SENATOR



925 L ST



THE SENATOR

Located in the heart of the Governmental Affairs District, 925 L St and The Senator provide high-quality office space with unmatched access to an abundance of amenities, proximity to the Capitol and a dedicated property management team that enrich the tenant experience.



925 L St Conference room seats 14-16



New Fitness Center at The Senator



Whired Wine Bar at The Senator



Complimentary bicycles available for daily use with secured storage



The Senator conference room seats up to 30



Professional security team on-site 24/7



New showers and lockers at The Senator and 925 L Street



One dedicated team of property management and engineering professionals

925

L STREET SACRAMENTO, CA

THE  
SENATOR

1121 L STREET

# SHARED AMENITIES



New, fully equipped meeting space in a range of sizes:

925 L Street conference room (seats 14-16)



virtual tour

The Senator conference room (seats up to 30)

The Senator lobby available for Tenant events



New Fitness Center at the Senator



Whired Wine Bar at The Senator



Complimentary bicycles available for daily use



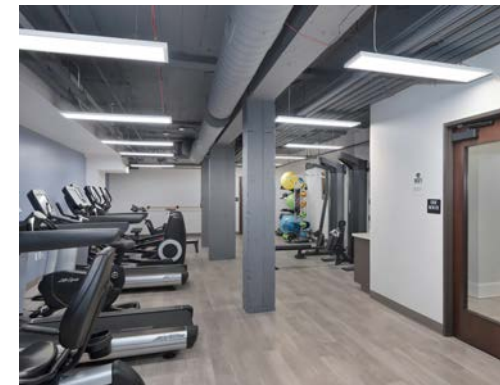
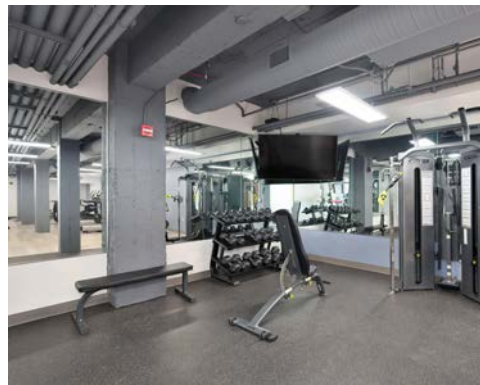
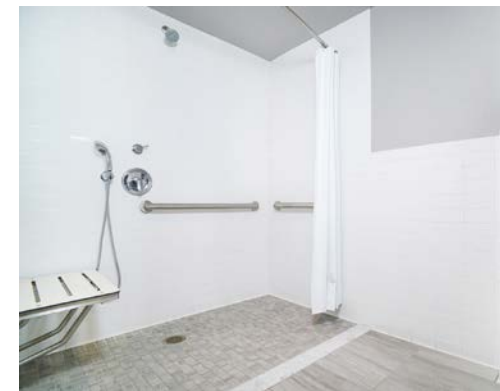
Secured bike storage rooms

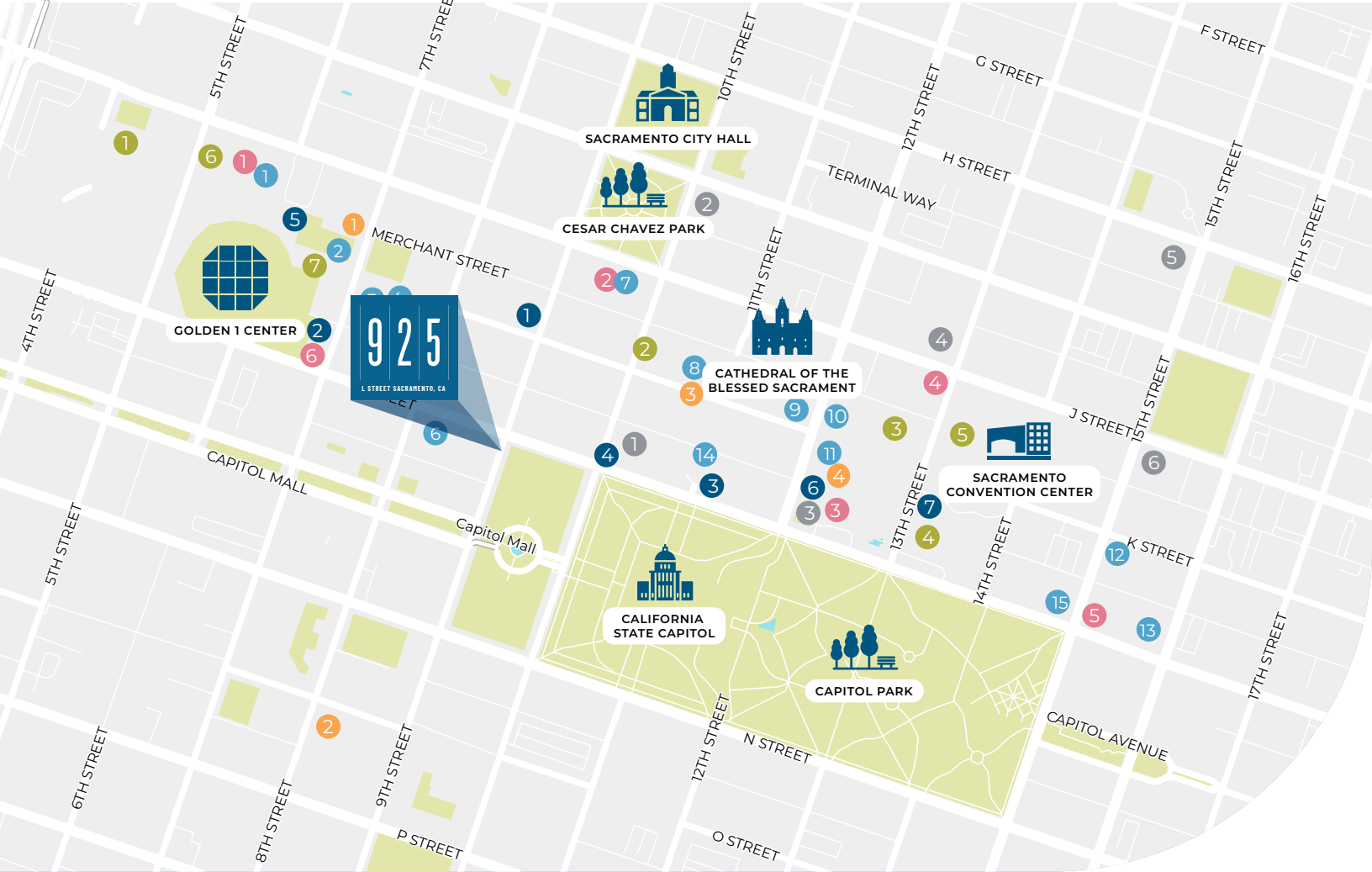


New showers and lockers at The Senator and 925 L Street



One dedicated team of property management and engineering professionals





# AMENITIES



## CAFES

1. Temple Coffee Roasters
2. Starbucks Reserve
3. Chicory Cafe
4. Starbucks
5. Estelle's Cafe
6. Starbucks
7. Starbucks



## ENTERTAINMENT

1. Century DOCO and XD
2. Crest Theatre
3. Esquire IMAX Theatre
4. Community Center Theater
5. Sacramento Convention Center
6. Punch Bowl
7. Flatstick Pub



## RESTAURANTS

1. Echo & Rig
2. Sauced BBQ & Spirits
3. Tiger
4. Ruhstaller BSMT
5. Solomon's Deli
6. Frank Fat's
7. Grange
8. Nash & Proper
9. Ella Dining Room & Bar
10. Brasserie Capitale
11. Mayahuel
12. Capitol Garage
13. Public House
14. Prelude Kitchen & Bar
15. Cafeteria 15L



## HOTELS

1. Kimpton Sawyer Hotel
2. The Citizen Hotel
3. Hyatt Regency Sacramento
4. Sheraton Grand
5. Residence Inn by Marriott
6. Hyatt Centric



## HEALTH CLUBS

1. 24 Hour Fitness
2. The Capital Athletic Club
3. California Family Fitness
4. Hyatt Fit



## PARKING

1. Capitol Garage
2. City Hall Garage
3. Hyatt Garage
4. Sheraton Garage
5. Memorial Garage
6. 1500 K St Structure

# 10 NEARBY ATTRACTIONS



1 | Catch an Off-Broadway show at at the newly renovated **SAFE Credit Union Performing Arts Center**.



2 | Sample **Mayahuel's** taco platter while choosing from a variety of tequila options.



3 | Feast on seasonal and regionally sourced ingredients during lunch at **Ella**.



4 | Grab a **Starbucks** latte from across the street while headed to the office.



5 | Enjoy city views from the **Aviary** rooftop deck while sipping avian-inspired craft cocktails.



6 | Challenge a client to a friendly game of mini golf at **Flatstick Pub**.



7 | Meet friends at **Fizz** for a glass of champagne and take a selfie in front of the Kristin Farr Mural.



8 | Catch a Kings game or dine at one of the many **DOCO Golden One Center's** restaurants, such as Sauced BBQ and Polanco Cantina.



9 | Dine at **Revival at the Sawyer** – a 200-seat restaurant on the third floor of the Kimpton Hotel that transforms into a high-spirited rooftop bar and lounge at night.



10 | Experience **Prelude Kitchen and Bar** for a delicious and locally grown lunch or dinner.



# STEPS FROM THE CAPITOL

# 925

L STREET SACRAMENTO, CA

## GREG LEVI

+1 916 491 4310

greg.levi@jll.com

RE License #: CA - 00973235

## ALEXIS GARRETT

+1 916 491 4316

alexis.garrett@jll.com

RE License #: CA - 01836361

**EXPERIENCE 925 L ST**



Although information has been obtained from sources deemed reliable, neither Owner nor JLL makes any guarantees, warranties or representations, express or implied, as to the completeness or accuracy as to the information contained herein. Any projections, opinions, assumptions or estimates used are for example only. There may be differences between projected and actual results, and those differences may be material. The Property may be withdrawn without notice. Neither Owner nor JLL accepts any liability for any loss or damage suffered by any party resulting from reliance on this information. If the recipient of this information has signed a confidentiality agreement regarding this matter, this information is subject to the terms of that agreement. ©2022. Jones Lang LaSalle IP, Inc. All rights reserved.