

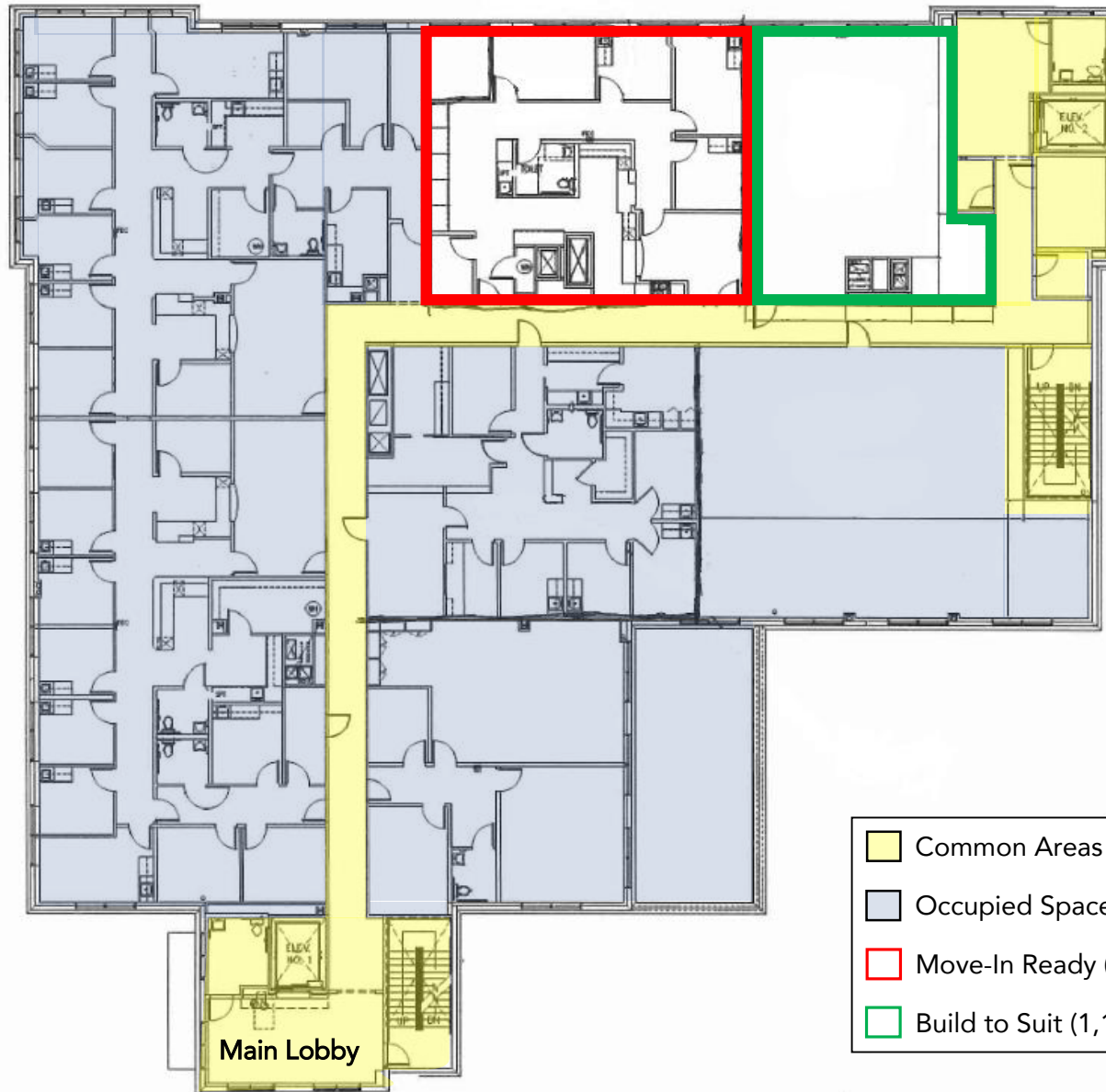
# For Lease

Keith A. Ewing Medical Office Building  
3701 Avalon Park W Boulevard, Orlando, FL 32828

Catalyst  
healthcare real estate

Cat's Claw Ln

Avalon Park W Blvd



- Common Areas
- Occupied Space
- Move-In Ready (1,693 RSF)
- Build to Suit (1,197 RSF)