



GROUND MATRIX



GROUND FLOOR  
MEDICAL SPACE

**FOR LEASE**

at

**665**

CHESTNUT STREET

San Francisco, CA 94133



Presented By:

**Jerry Adamson**

707.570.7802

[jerry@groundmatrix.com](mailto:jerry@groundmatrix.com)

CalDRE #01935945

# 665

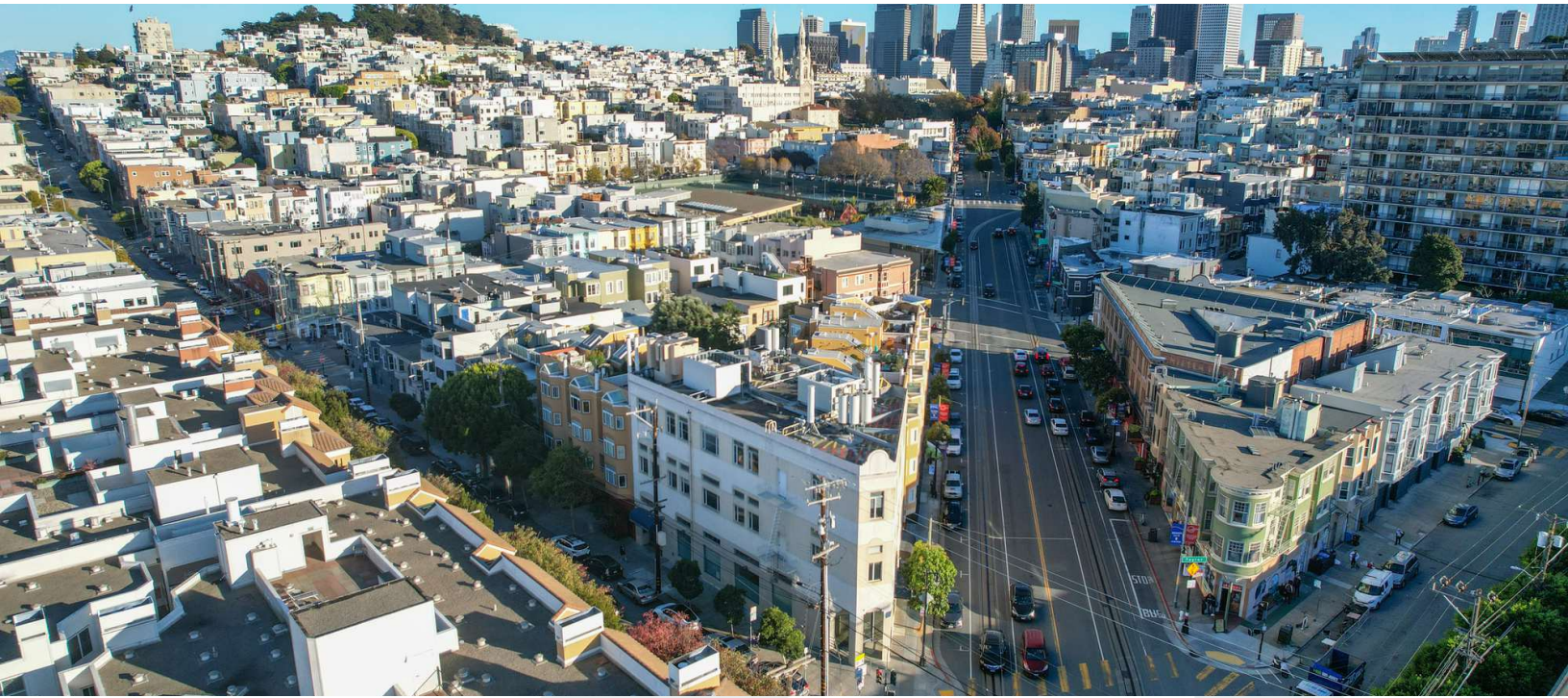
GROUND FLOOR MEDICAL SPACE  
**CHESTNUT STREET**  
San Francisco, CA 94133



GROUND MATRIX

FOR LEASE | MEDICAL OFFICE SPACE

Property Summary



## PROPERTY DESCRIPTION

The Ground Floor of 665 Chestnut showcases a highly visible and premier medical space. Take advantage of exterior signage, abundant street parking, and a welcoming entrance for patients. The suite has high ceilings and built-in reception in place.

## LOCATION DESCRIPTION

665 Chestnut is conveniently located on a main corridor between the Financial District and the North Waterfront neighborhood. Our tenants enjoy the great amenities of the neighborhood, including many restaurants, bars and shops within walking distance. There are many parking garages nearby and street parking is readily available.

## OFFERING SUMMARY

Lease Rate:	\$36/RSF/year
First Floor (Medical):	+/- 3,229 RSF
Availability:	Immediate
Lease Type:	Industrial Gross

### Jerry Adamson

707.570.7802  
jerry@groundmatrix.com  
CalDRE #01935945

# 665

GROUND FLOOR MEDICAL SPACE  
**CHESTNUT STREET**  
San Francisco, CA 94133



GROUND MATRIX

FOR LEASE | MEDICAL OFFICE SPACE

Ground Floor



### SPACE HIGHLIGHTS:

- GROUND FLOOR MEDICAL SPACE ON CORNER OF PROMINENT INTERSECTION
- EXTERIOR SIGNAGE AVAILABLE TO STREET TRAFFIC
- HIGH-END MEDICAL BUILDOUT
- ABUNDANT NATURAL LIGHT
- TWO RESTROOMS
- FIVE (5) DOCTORS OFFICES
- ADMIN/TRIAGE ROOM
- THREE (3) EXAM ROOMS
- STAFF KITCHEN AND BREAK ROOM
- ONE (1) GLASS CONFERENCE ROOM
- STORAGE CLOSETS
- LARGE RECEPTION AND WAITING AREA



### Jerry Adamson

707.570.7802  
jerry@groundmatrix.com  
CalDRE #01935945

# 665

GROUND FLOOR MEDICAL SPACE  
**CHESTNUT STREET**  
San Francisco, CA 94133



GROUND MATRIX

FOR LEASE | MEDICAL OFFICE SPACE

[Additional Photos](#)



**Jerry Adamson**

707.570.7802  
jerry@groundmatrix.com  
CalDRE #01935945

# 665

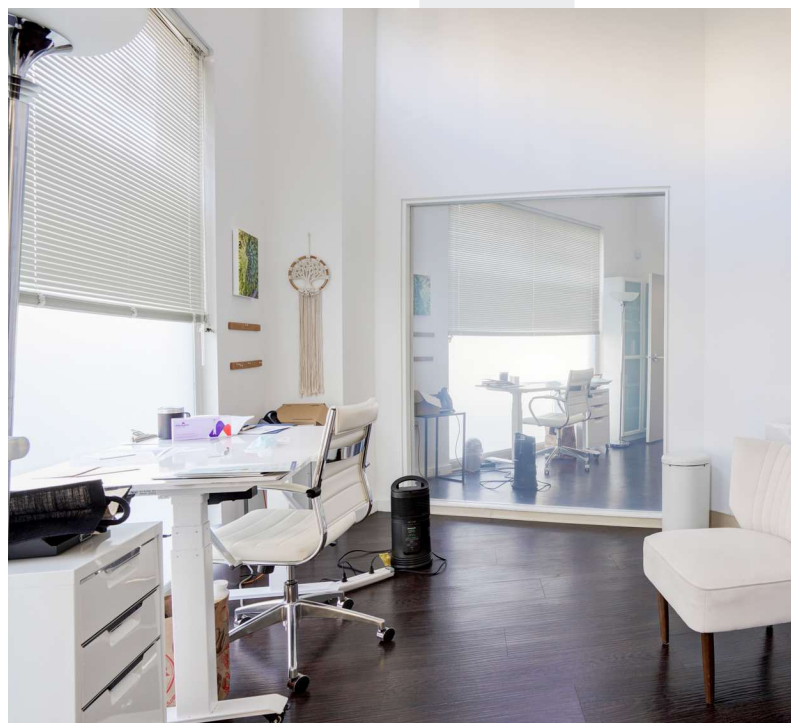
GROUND FLOOR MEDICAL SPACE  
**CHESTNUT STREET**  
San Francisco, CA 94133



GROUND MATRIX

FOR LEASE | MEDICAL OFFICE SPACE

Additional Photos



**Jerry Adamson**  
707.570.7802  
jerry@groundmatrix.com  
CalDRE #01935945

# 665

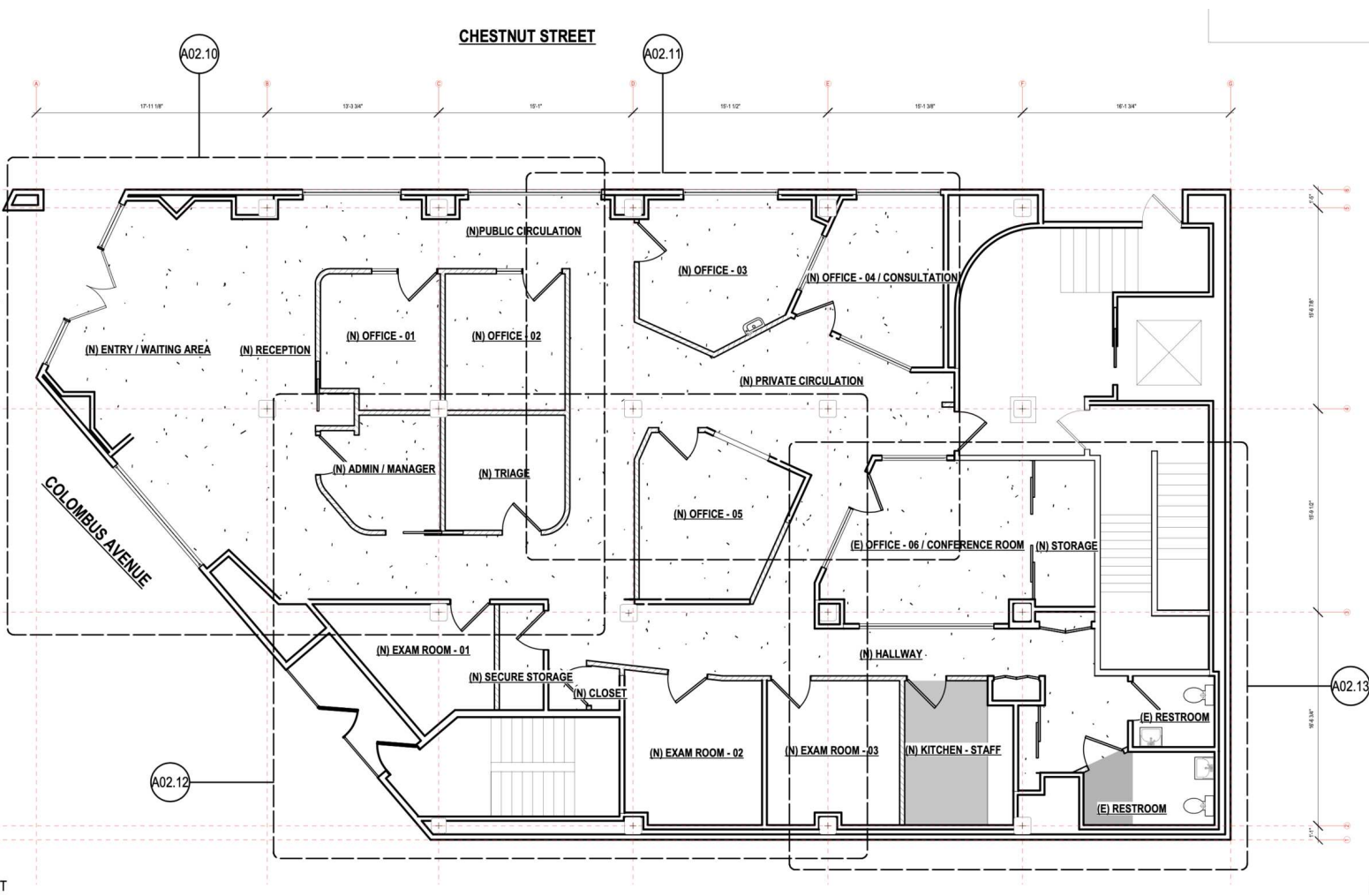
GROUND FLOOR MEDICAL SPACE  
**CHESTNUT STREET**  
San Francisco, CA 94133



GROUND MATRIX

FOR LEASE | MEDICAL OFFICE SPACE

1st Floor Plans



**Jerry Adamson**  
707.570.7802  
jerry@groundmatrix.com  
CalDRE #01935945

# 665

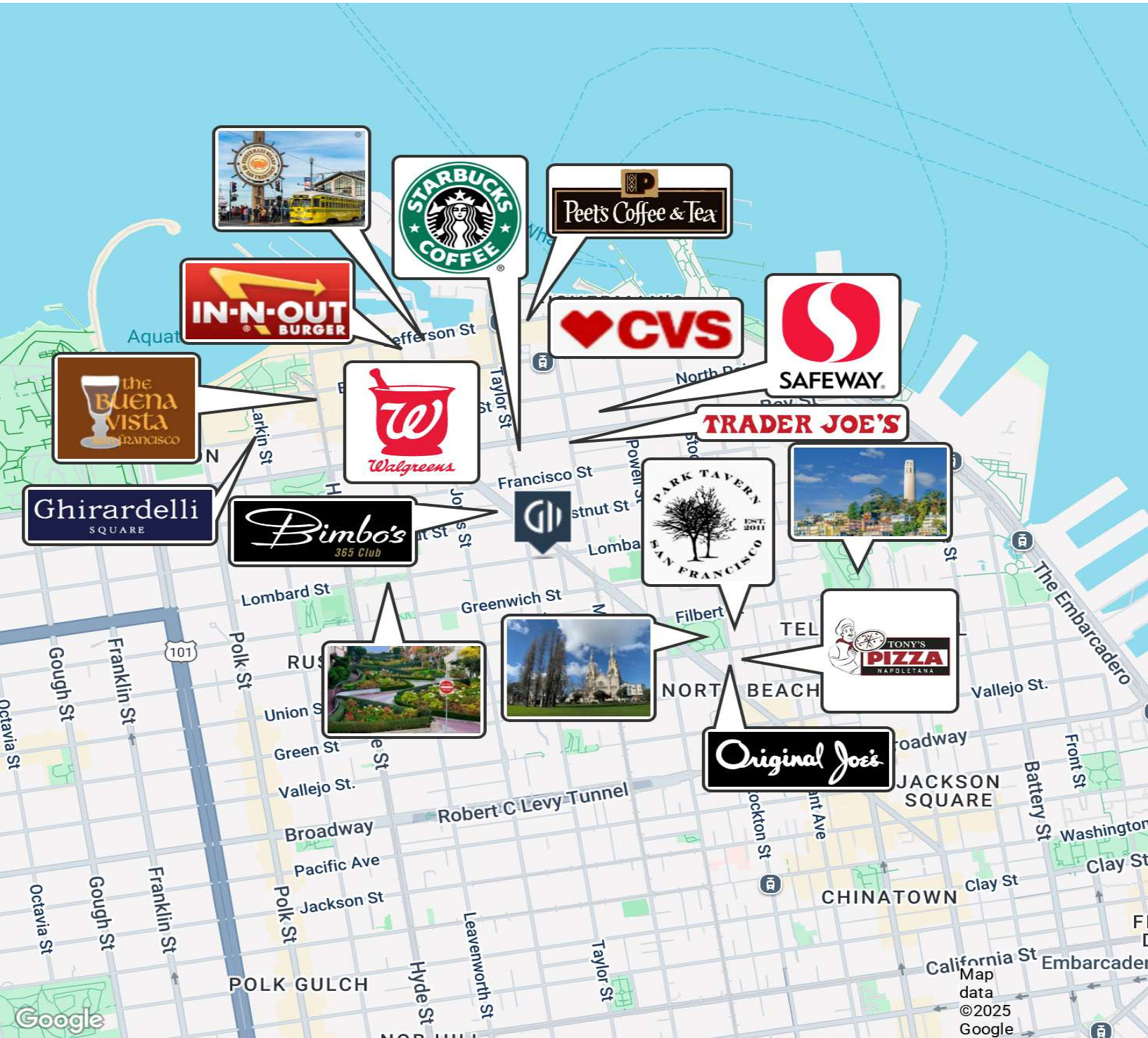
GROUND FLOOR MEDICAL SPACE  
**CHESTNUT STREET**  
San Francisco, CA 94133



GROUND MATRIX

FOR LEASE | MEDICAL OFFICE SPACE

Location Maps



**Jerry Adamson**  
707.570.7802  
jerry@groundmatrix.com  
CalDRE #01935945