



**FOR LEASE**

# COMPARK 75

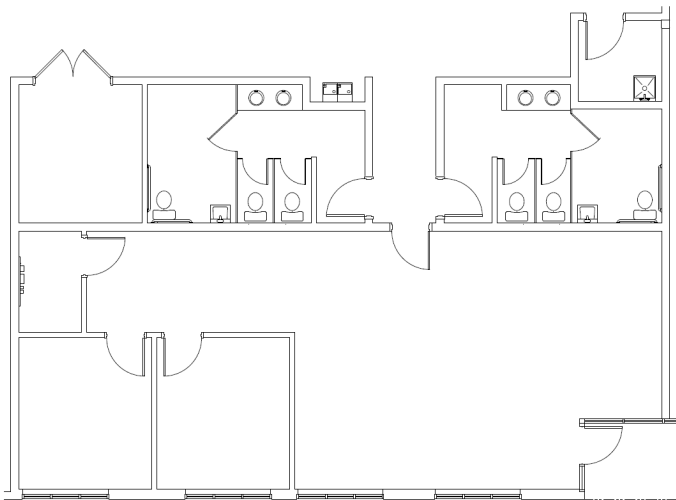
4427 PET LANE, SUITES E105-106  
LUTZ, FL 33559



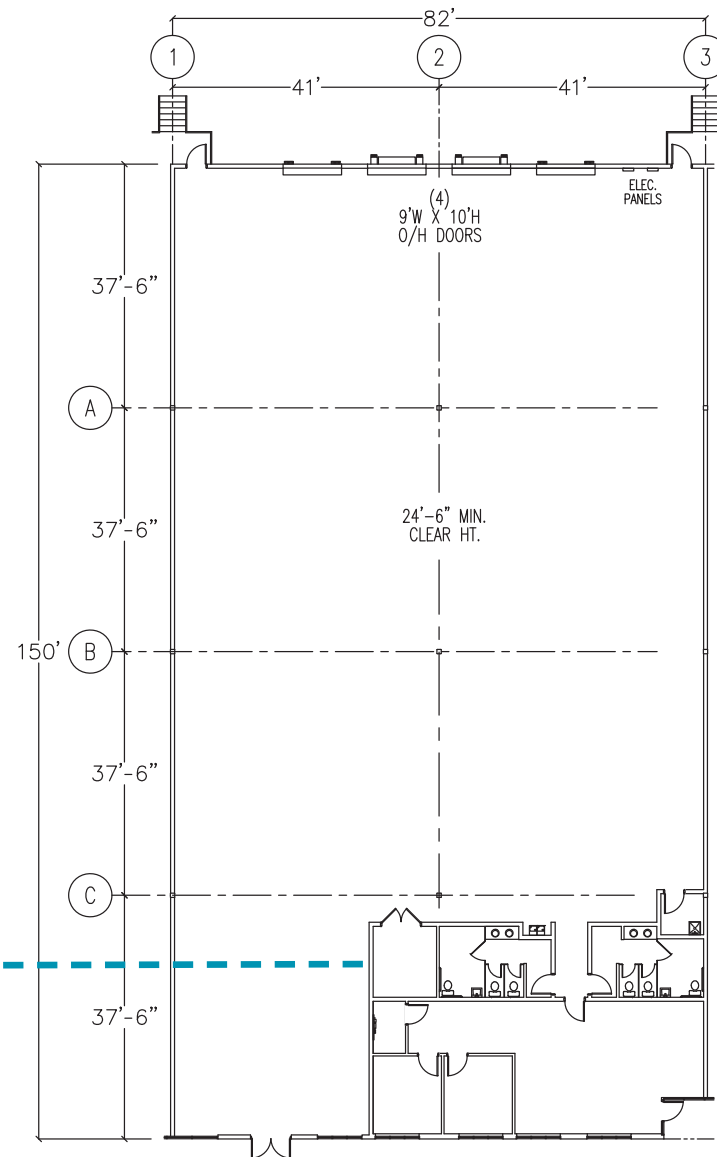
# CURRENT AVAILABILITIES

## BUILDING E - SUITES 105-106

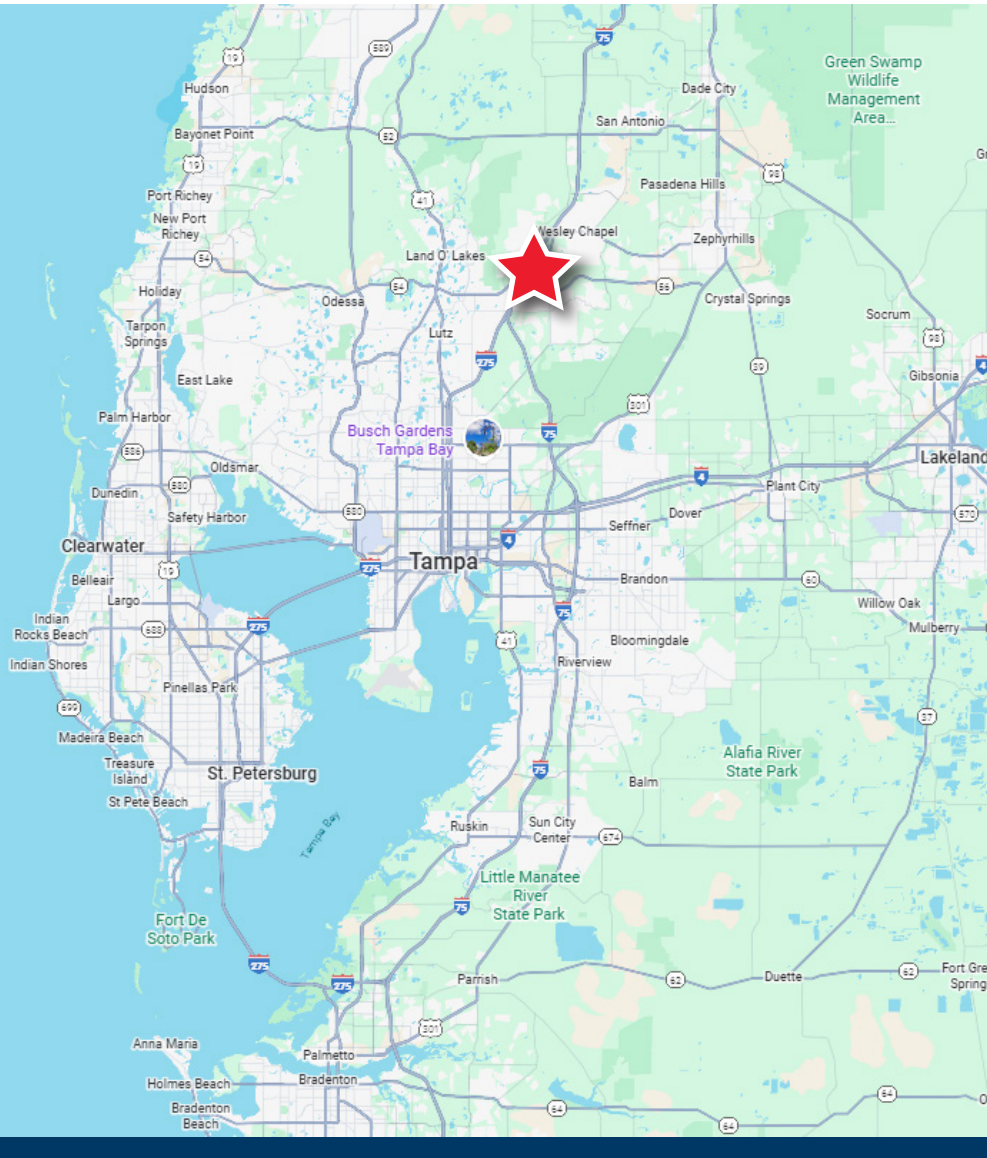
|               |                   |
|---------------|-------------------|
| SIZE          | 12,300 SF         |
| OFFICE        | 1,625 SF          |
| TOTAL LOADING | 4 Dock High Doors |
| CLEAR HEIGHT  | 24'               |
| AVAILABILITY  | Available Now     |



**1,625 SF OFFICE SPACE**



# PROPERTY OVERVIEW



## BUILDING HIGHLIGHTS

Compark 75 is a 5-building, 294,165 SF Class A industrial park in Pasco County, Florida, located just off of SR 54 & I-75. The park features both dock-high and grade-level loading as well as newly renovated office space for all vacant units.



3 MILES TO  
**I-75**



22 MILES TO  
**DOWNTOWN TAMPA**



27 MILES TO  
**TAMPA INTL AIRPORT**



40 MILES TO  
**ST.PETE-CLEARWATER INT'L AIRPORT**



**MELISSA WATTERWORTH**

Senior Associate

[melissa.watterworths@cushwake.com](mailto:melissa.watterworths@cushwake.com)

+1 813 599 2190

**SAM KOROLOS**

Director

[sam.korolos@cushwake.com](mailto:sam.korolos@cushwake.com)

+1 704 989 1327

**LISA ROSS, SIOR**

Executive Director

[lisa.ross@cushwake.com](mailto:lisa.ross@cushwake.com)

+1 813 760 3209

**TREY CARSWELL, SIOR**

Executive Director

[trey.carswell@cushwake.com](mailto:trey.carswell@cushwake.com)

+1 813 230 6131

©2025 Cushman & Wakefield. All rights reserved. The information contained in this communication is strictly confidential. This information has been obtained from sources believed to be reliable but has not been verified. NO WARRANTY OR REPRESENTATION, EXPRESS OR IMPLIED, IS MADE AS TO THE CONDITION OF THE PROPERTY (OR PROPERTIES) REFERENCED HEREIN OR AS TO THE ACCURACY OR COMPLETENESS OF THE INFORMATION CONTAINED HEREIN, AND SAME IS SUBMITTED SUBJECT TO ERRORS, OMISSIONS, CHANGE OF PRICE, RENTAL OR OTHER CONDITIONS, WITHDRAWAL WITHOUT NOTICE, AND TO ANY SPECIAL LISTING CONDITIONS IMPOSED BY THE PROPERTY OWNER(S). ANY PROJECTIONS, OPINIONS OR ESTIMATES ARE SUBJECT TO UNCERTAINTY AND DO NOT SIGNIFY CURRENT OR FUTURE PROPERTY PERFORMANCE.



**CUSHMAN &  
WAKEFIELD**

