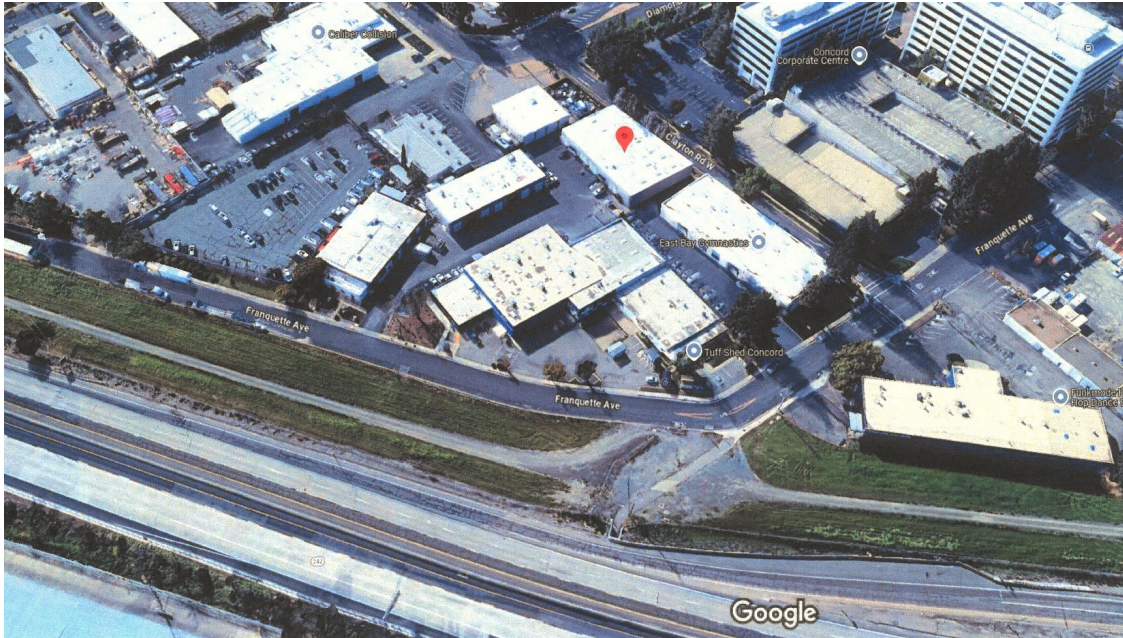


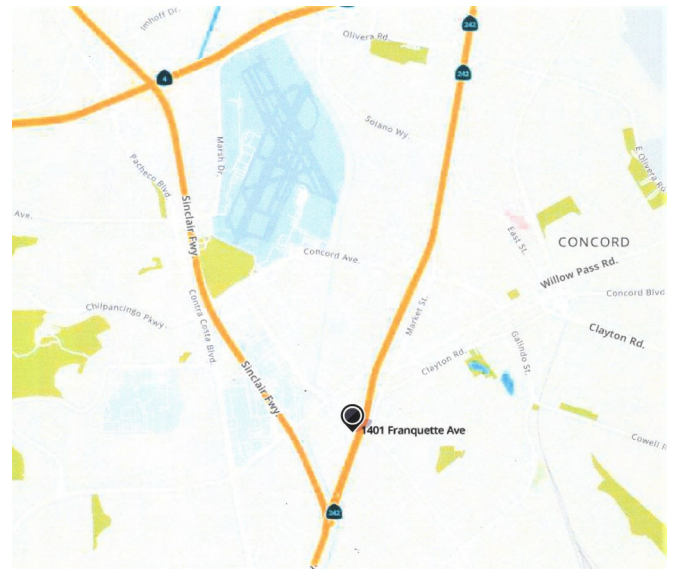
Light Industrial Space FOR LEASE

1381 Franquette Ave., Suite "C-1"
Concord, California



Property Information

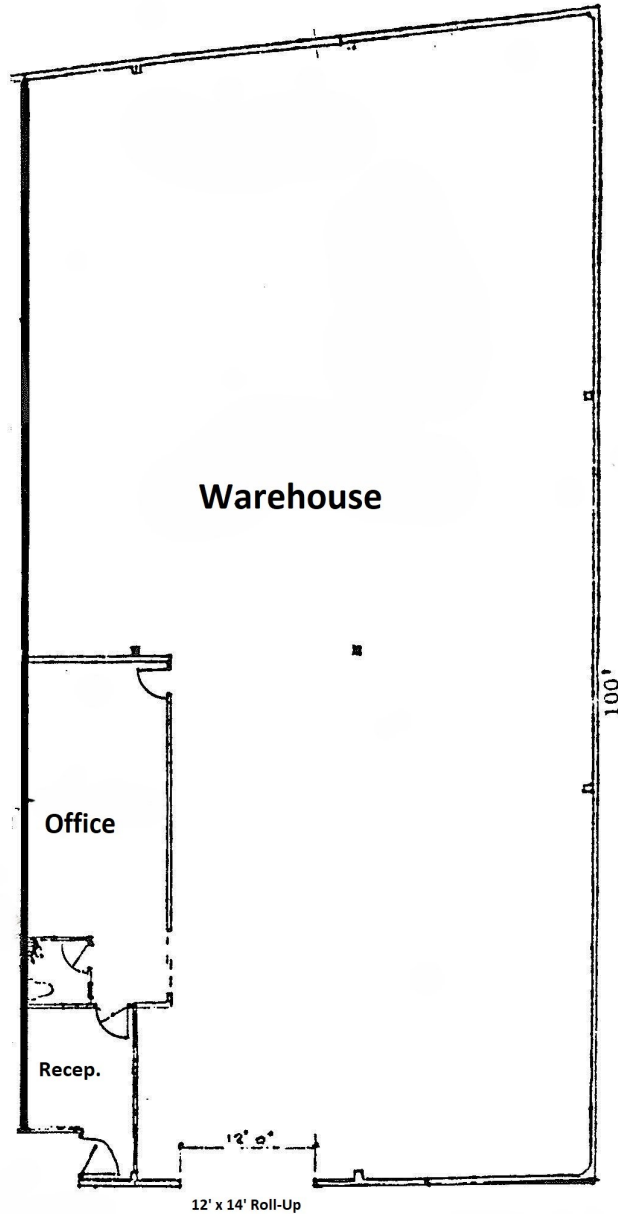
- **4,911 +/- SQ. FT. LIGHT INDUSTRIAL SPACE FOR LEASE IN CENTRAL CONCORD**
- **BUILDOUT INCLUDES, RECEPTION, ONE LARGE OPEN OFFICE AREA, RESTROOM**
- **ONE 12' WIDE X 14' HIGH ROLL-UP DOOR**
- **18' CL. HT., INSULATION, SKYLIGHTS**
- **100 AMP 120/208 VOLT 3 PHASE POWER**
- **GREAT CENTRAL CONCORD LOCATION, PROJECT FRONTS ON HIGHWAY 242**
- **ASKING LEASE RATE: \$1.70 PER SQ. FT. PER MONTH INDUSTRIAL GROSS**



Contact Listing Broker:
Thomas Caple
Director
(510) 908-0505
tom@dpccommercial.com
CA DRE#01089011

Deutscher Properties Corp.
370 Civic Drive
Pleasant Hill, CA
Office (925) 676-6166
Fax (925) 676-6177
www.dpccommercial.com

1381 Franquette Ave., Ste. "C-1"
Concord, California

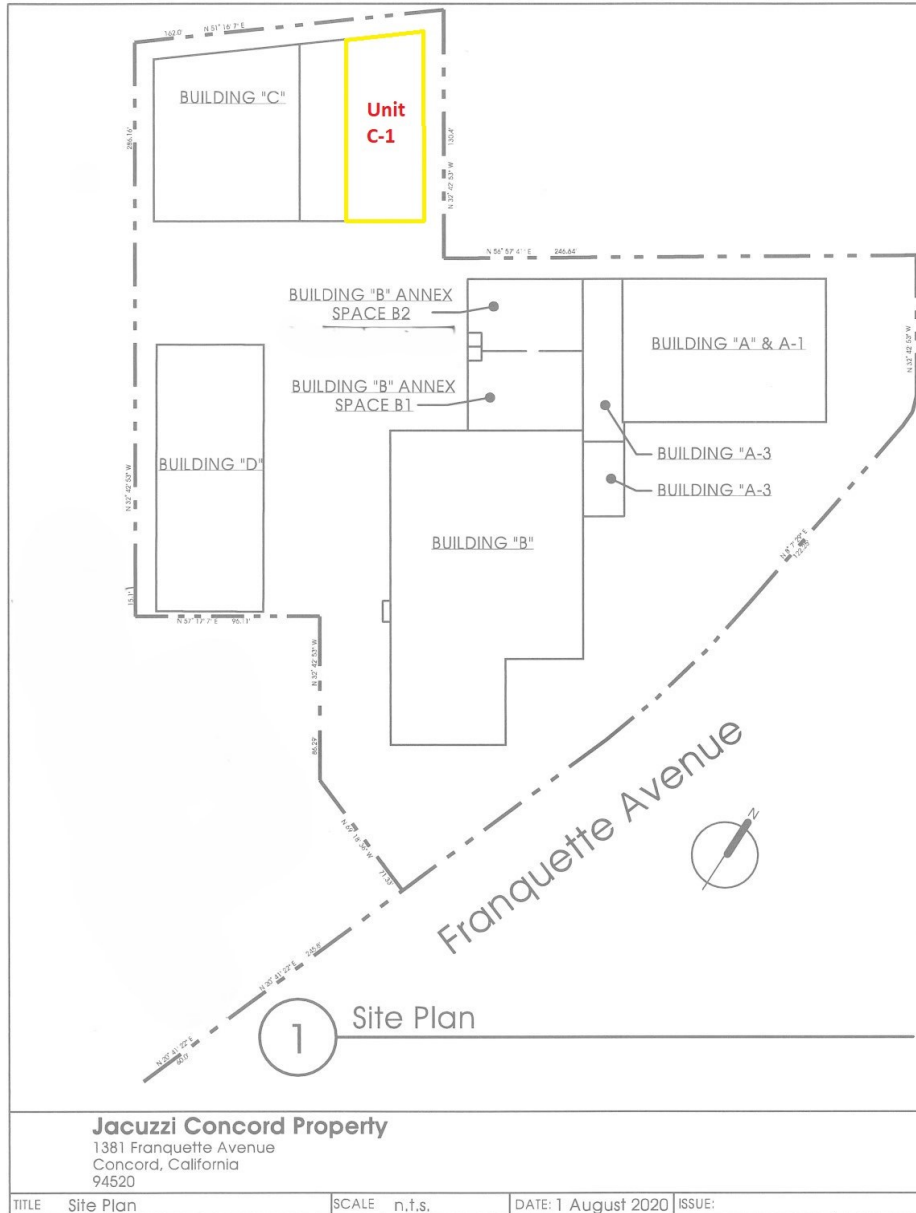


Contact Listing Broker:
Thomas Caple
(510) 908-0505
tom@dpccommercial.com
CA DRE#01089011

Deutscher Properties Corp.
370 Civic Drive
Pleasant Hill, CA
Office (925) 676-6166
Fax (925) 676-6177
www.dpccommercial.com

1381 Franquette Ave., Ste. "C-1"

Concord, California



Contact Listing Broker:
Thomas Caple
 (510) 908-0505
 tom@dpccommercial.com
 CA DRE#01089011

Deutscher Properties Corp.
 370 Civic Drive
 Pleasant Hill, CA
 Office (925) 676-6166
 Fax (925) 676-6177
 www.dpccommercial.com