



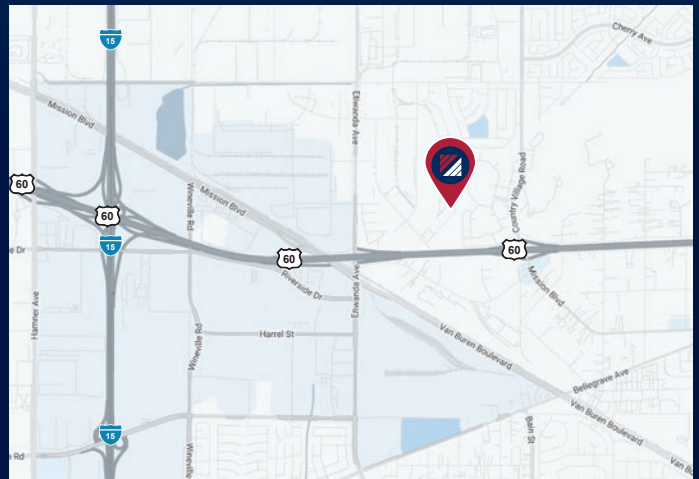
FOR LEASE

±35,887 SF FREESTANDING BUILDING

3631 GRAPEVINE STREET | JURUPA VALLEY | CA

PROPERTY HIGHLIGHTS

- ±35,887 SF Freestanding Building
- ±3,510 SF Two-Story Office
- Three (3) Dock-High Loading Doors
- Two (2) Large Grade-Level Doors
- 24-Foot Ceiling Clearance
- 400 Amps Power, 277-480 Volts, 3-Phase
- Large Gated Yard
- Fire Sprinklers (0.65/2000)
- Dual Ingress/Egress into Property
- MM Zoning
- Convenient Freeway Access (60/15/10)



FOR MORE INFORMATION, PLEASE CONTACT:

NOAH SAMARIN

E.V.P. | PRINCIPAL
M: 714.812.1289
nsamarin@daumcommercial.com
CADRE #01755814

DAVE GORES

FIRST VICE PRESIDENT
M: 909.720.9437
dgores@daumcommercial.com
CADRE #01502471

NICK CANTU

ASSOCIATE VICE PRESIDENT
M: 714.787.9454
ncantu@daumcommercial.com
CADRE #02016719

EVAN CHIEN

ASSOCIATE
D: 949.517.8610 | M: 949.517.8610
echien@daumcommercial.com
CADRE #02213962

Although all information is furnished regarding for sale, rental or financing from sources deemed reliable, such information has not been verified and no express representation is made nor is any to be implied as to the accuracy thereof, and it is submitted subject to errors, omissions, changes of price, rental or other conditions, prior sale, lease or financing, or withdrawal without notice. All Maps provided courtesy of Google Maps, Bing Maps, and Google Earth. D/AQ Corp. # 01129558



FOR LEASE

±35,887 SF FREESTANDING BUILDING

3631 GRAPEVINE STREET | JURUPA VALLEY | CA

PHOTOS



FOR MORE INFORMATION, PLEASE CONTACT:

NOAH SAMARIN

E.V.P. | PRINCIPAL
M: 714.812.1289
nsamarin@daumcommercial.com
CADRE #01755814

DAVE GORES

FIRST VICE PRESIDENT
M: 909.720.9437
dgores@daumcommercial.com
CADRE #01502471

NICK CANTU

ASSOCIATE VICE PRESIDENT
M: 714.787.9454
ncantu@daumcommercial.com
CADRE #02016719

EVAN CHIEN

ASSOCIATE
D: 949.517.8610 | M: 949.517.8610
echien@daumcommercial.com
CADRE #02213962

Although all information is furnished regarding for sale, rental or financing from sources deemed reliable, such information has not been verified and no express representation is made nor is any to be implied as to the accuracy thereof, and it is submitted subject to errors, omissions, changes of price, rental or other conditions, prior sale, lease or financing, or withdrawal without notice. All Maps provided courtesy of Google Maps, Bing Maps, and Google Earth. D/AQ Corp. # 01129558


SGC INDUSTRIAL TEAM

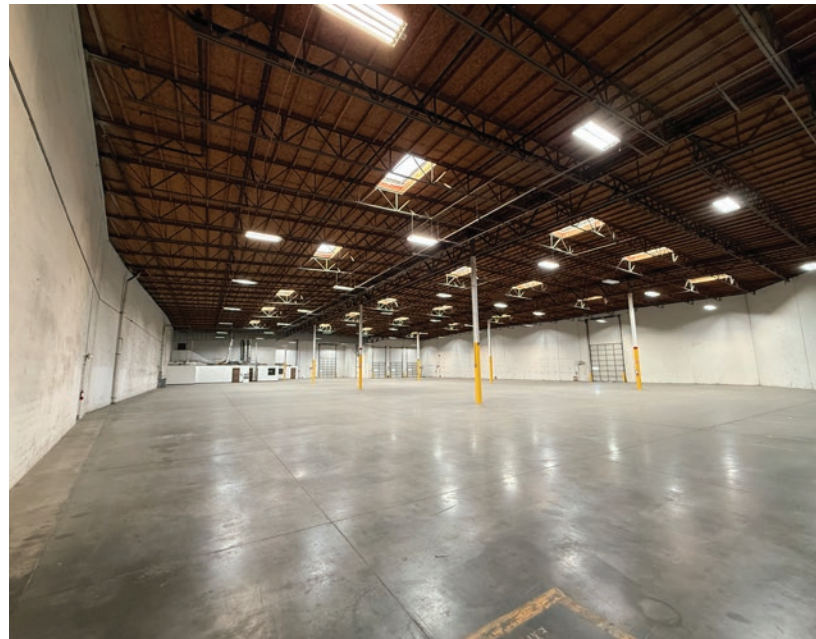

DAUM
COMMERCIAL REAL ESTATE SERVICES

FOR LEASE

±35,887 SF FREESTANDING BUILDING

3631 GRAPEVINE STREET | JURUPA VALLEY | CA

PHOTOS



FOR MORE INFORMATION, PLEASE CONTACT:

NOAH SAMARIN

E.V.P. | PRINCIPAL
M: 714.812.1289
nsamarin@daumcommercial.com
CADRE #01755814

DAVE GORES

FIRST VICE PRESIDENT
M: 909.720.9437
dgores@daumcommercial.com
CADRE #01502471

NICK CANTU

ASSOCIATE VICE PRESIDENT
M: 714.787.9454
ncantu@daumcommercial.com
CADRE #02016719

EVAN CHIEN

ASSOCIATE
D: 949.517.8610 | M: 949.517.8610
echien@daumcommercial.com
CADRE #02213962

Although all information is furnished regarding for sale, rental or financing from sources deemed reliable, such information has not been verified and no express representation is made nor is any to be implied as to the accuracy thereof, and it is submitted subject to errors, omissions, changes of price, rental or other conditions, prior sale, lease or financing, or withdrawal without notice. All Maps provided courtesy of Google Maps, Bing Maps, and Google Earth. D/AQ Corp. # 01129558


SGC INDUSTRIAL TEAM

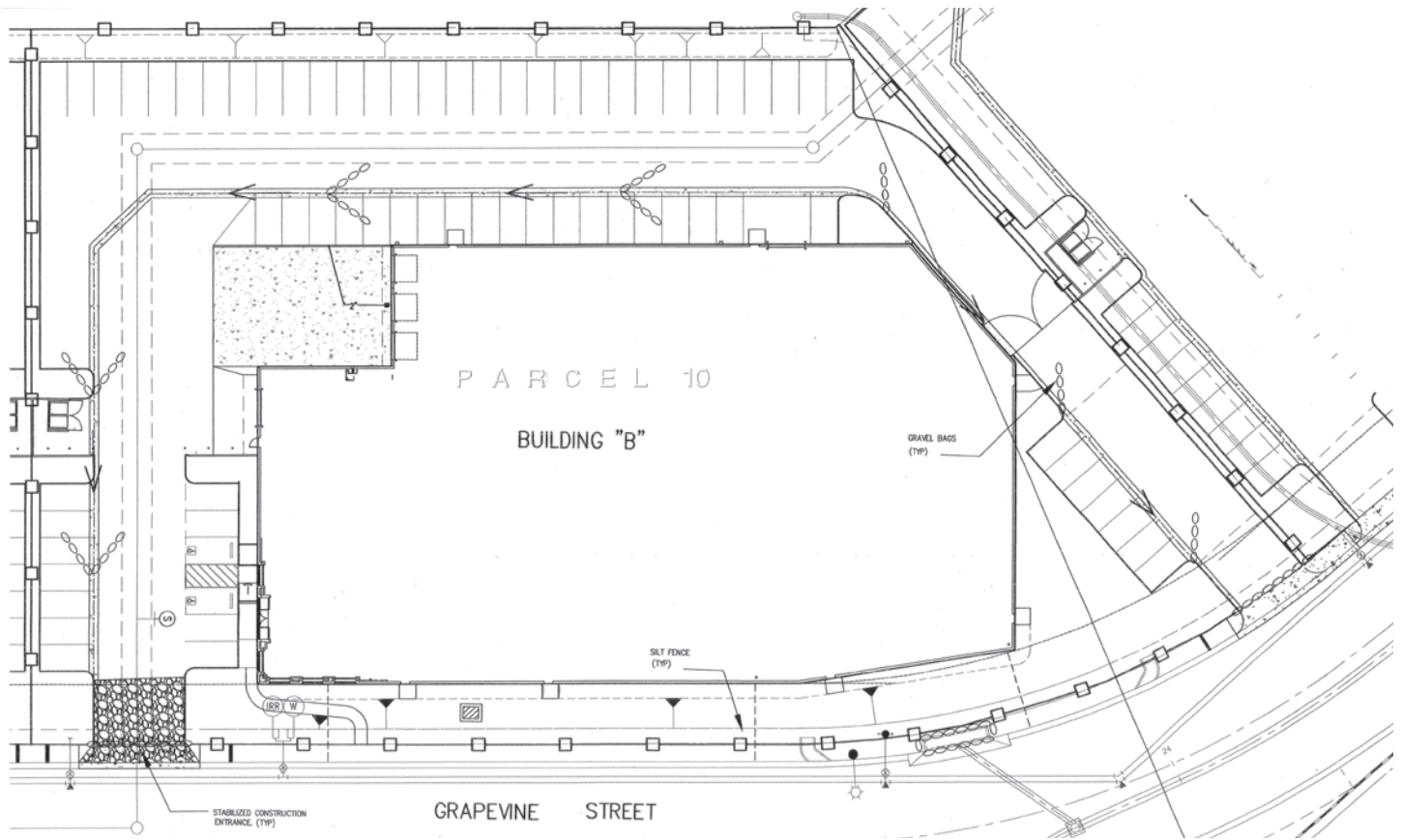

DAUM
COMMERCIAL REAL ESTATE SERVICES

FOR LEASE

±35,887 SF FREESTANDING BUILDING

3631 GRAPEVINE STREET | JURUPA VALLEY | CA

SITE PLAN



*** NOT TO SCALE**

FOR MORE INFORMATION, PLEASE CONTACT:

NOAH SAMARIN

E.V.P. | PRINCIPAL
M: 714.812.1289
nsamarin@daumcommercial.com
CADRE #01755814

DAVE GORES

FIRST VICE PRESIDENT
M: 909.720.9437
dgores@daumcommercial.com
CADRE #01502471

NICK CANTU

ASSOCIATE VICE PRESIDENT
M: 714.787.9454
ncantu@daumcommercial.com
CADRE #02016719

EVAN CHIEN

ASSOCIATE
D: 949.517.8610 | M: 949.517.8610
echien@daumcommercial.com
CADRE #02213962

Although all information is furnished regarding for sale, rental or financing from sources deemed reliable, such information has not been verified and no express representation is made nor is any to be implied as to the accuracy thereof, and it is submitted subject to errors, omissions, changes of price, rental or other conditions, prior sale, lease or financing, or withdrawal without notice. All Maps provided courtesy of Google Maps, Bing Maps, and Google Earth. D/AQ Corp. # 01129558


SGC INDUSTRIAL TEAM


DAUM
COMMERCIAL REAL ESTATE SERVICES

FOR LEASE

±35,887 SF FREESTANDING BUILDING

3631 GRAPEVINE STREET | JURUPA VALLEY | CA

DRAYAGE MAP



FOR MORE INFORMATION, PLEASE CONTACT:

NOAH SAMARIN
E.V.P. | PRINCIPAL
M: 714.812.1289
nsamarin@daumcommercial.com
CADRE #01755814

DAVE GORES
FIRST VICE PRESIDENT
M: 909.720.9437
dgores@daumcommercial.com
CADRE #01502471

NICK CANTU
ASSOCIATE VICE PRESIDENT
M: 714.787.9454
ncantu@daumcommercial.com
CADRE #02016719

EVAN CHIEN
ASSOCIATE
D: 949.517.8610 | M: 949.517.8610
echien@daumcommercial.com
CADRE #02213962

Although all information is furnished regarding for sale, rental or financing from sources deemed reliable, such information has not been verified and no express representation is made nor is any to be implied as to the accuracy thereof, and it is submitted subject to errors, omissions, changes of price, rental or other conditions, prior sale, lease or financing, or withdrawal without notice. All Maps provided courtesy of Google Maps, Bing Maps, and Google Earth. D/AQ Corp. # 01129558


SGC INDUSTRIAL TEAM


DAUM
COMMERCIAL REAL ESTATE SERVICES