

# STUDIO Y

BY  SPACEMADE .CO

# SPACEMADE

For meaningful connections.

At Spacemade, we believe that real-world connections shape our personal and professional journeys in ways unmatched by digital networks and interfaces.

This is why at each of our locations, we foster environments that make your office days feel purposeful and engaging; where mere interactions turn into meaningful connections and opportunities to learn, grow, and succeed together.

Whether you need a private office, a coworking space, or a meeting room for the day, you'll be welcomed into a vibrant community of like-minded professionals and businesses, all thriving in the company of others.

*Jonny & Dan*

Spacemade Co-Founders



# THE SPACEMADE WAY



No matter which of our locations you choose, you'll always find these things to boost your work day.



WELCOMING  
COMMUNITY

DEDICATED  
ON-SITE TEAM

CURATED  
MEMBER EVENTS

EXCLUSIVE MEMBER  
PERKS & DISCOUNTS

DOG FRIENDLY  
SPACES

INFORMAL MEETING  
& BREAKOUT AREAS

UNLIMITED ARTISAN  
COFFEE & TEA

PRIVATE PHONE  
BOOTHS

1GB HIGH SPEED  
FIBRE WIFI

FLEXIBLE CONTRACTS  
& ALL-IN PRICING



# STUDIO Y

BY SPACEMADE .CO

# WHERE FASHION WORKS

## YOUR NEW FASHION & BEAUTY HUB IN W11

Studio Y by Spacemade is the ultimate flexible workspace created for fashion, beauty, and creative businesses. Located in the iconic Yellow Building at Notting Dale Campus - home to industry leaders like Stella McCartney, Phoebe Philo, Monsoon, Accessorize, Dune, Penelope Chilvers, Nip+Fab and Rodial - Studio Y sits at the heart of a dynamic creative hub, surrounded by striking contemporary art from Antony Gormley, Damien Hirst, and Carsten Höller.

Enjoy hospitality-led service, a curated events program, and state-of-the-art facilities, all designed to help you connect, create, and thrive. Be part of a community that is set to redefine the way fashion and creative businesses work.

1st Floor, Yellow Building  
Notting Dale Campus  
1 Nicholas Road  
London W11 4AN

[///cherry.signal.mostly](http://cherry.signal.mostly)

# STUDIO Y

BY SPACEMADE .CO

“We truly believe that people flourish in the company of others, and each connection amplifies collective potential. By creating a destination for fashion and beauty businesses, we want to foster meaningful connections and new opportunities within this brilliant industry, bringing like-minded companies together.”

DAN SILVERMAN  
Spacemade Co-Founder



“As a vibrant hub for fashion and beauty brands, this location embodies the creative energy and innovation that West London is renowned for.”

PETER SIMON  
Founder of Monsoon & Accessorize /  
Creative mind behind Notting Dale Campus



# IN THE BUILDING

# STUDIO Y

BY SPACEMADE .CO



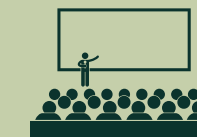
PRIVATE OFFICES



COWORKING HOT  
DESKS\*



BOOKABLE  
MEETING ROOMS



BOOKABLE  
EVENT LOUNGE\*



BREAKOUT AREAS  
& SOFT SEATING



ON-SITE  
BUILDING  
MANAGER



CURATED  
COMMUNITY  
EVENTS



PREMIUM PHONE  
BOOTHS



FILTERED WATER, TEA,  
COFFEE, MILK, FRUIT



1 GB FIBRE LINE  
& FAST WIFI



KITCHEN  
AMENITIES



CLEANING SERVICE



BIKE  
STORAGE



SHOWERS, CHANGING  
ROOMS & LOCKERS



24/7 ACCESS

\*Launching July 2025

# OUR SOLUTIONS AT A GLANCE

Whether you're looking for a private office, a coworking space, a location for your next event or a meeting room for the day, you'll be welcomed into a vibrant community of like-minded professionals and businesses, all thriving in the company of others.

Our dedicated team is here to help you find the perfect flexible solution tailored to your needs.

[GET IN TOUCH →](#)

[VIEW FLOOR PLANS →](#)

**PRIVATE OFFICES**  
**FROM £425**  
DESK / MONTH

**COWORKING**  
**MEMBERSHIPS**  
**FROM £129**  
PERSON / MONTH

**MEETING ROOMS**  
**FROM £60**  
UP TO 10 PERSON / HOUR

**EVENT LOUNGE**  
**£POA**  
ENQUIRE FOR DETAILS

# GETTING AROUND



**LATIMER ROAD: 3 MIN**

- To Paddington: 6 min
- To Hammersmith: 7 min
- To Baker Street: 13 min
- To Euston: 22 min



**SHEPHERD'S BUSH: 7-10 MIN**

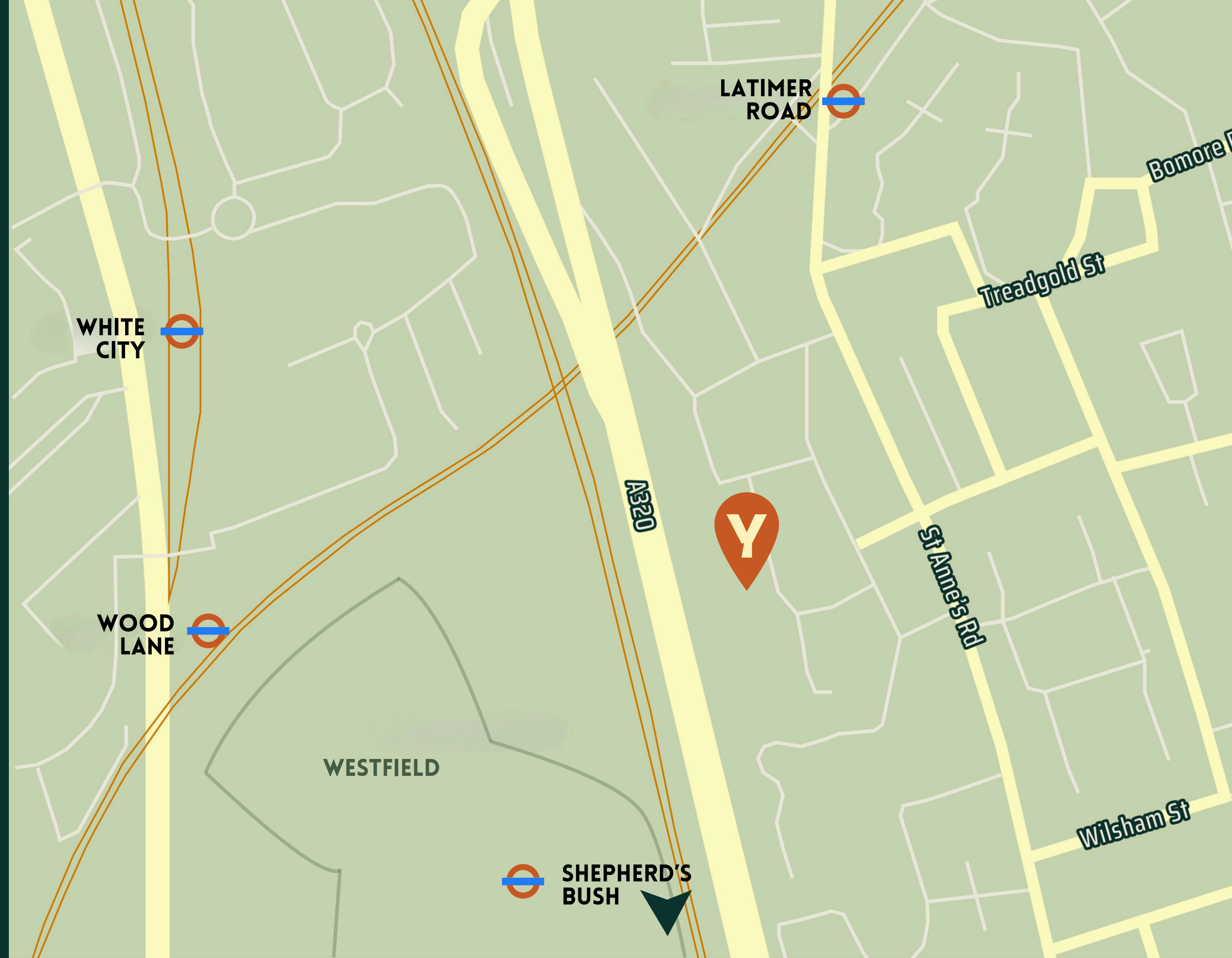


- To Notting Hill Gate: 3 min
- To Oxford Circus: 11 min
- To Clapham Junction: 13 min
- To Ealing Broadway: 14 min
- To West Hampstead: 15 min



**CYCLE**

- To Holland Park: 6 min
- To Portobello Road Market: 7 min
- To Notting Hill Gate: 9 min
- To Earl's Court: 13 min



# IN THE NEIGHBOURHOOD



## EAT & DRINK

- Frestons Cafe 1
- Embassy Cafe 2
- Bergamot 3
- Garden Bar 4
- Julie's 5

## SEE & DO

- Kensington Leisure Centre 6
- Westfield White City 7
- All Star Lanes 8
- Electric Cinema 9
- Portobello Road Market 10

STUDIO Y

BY SPACEMADE .CO

GET IN TOUCH TO  
DISCOVER MORE

GIORGIA  
CARAMELLA

SALES MANAGER

T: 07708 392 313

E: [giorgia@spacemade.co](mailto:giorgia@spacemade.co)

GET IN TOUCH →

