

2501 W. BURBANK BLVD., BURBANK, CA

JENNIFER DONALDSON

Principal

818.933.0347

jdonaldson@lee-re.com

DRE #01317737



COMMERCIAL REAL ESTATE SERVICES

Lee & Associates®- LA North/Ventura, Inc.

A Member of the Lee & Associates Group of Companies

15060 Ventura Blvd, Suite 100

Sherman Oaks, CA 91403

P 818.986.9800 F 818.783.9260

All information furnished regarding the property is from sources deemed reliable, but no warranty or representation is made as to the accuracy thereof. This information is submitted subject to errors, omissions, change of price or terms, prior sale or lease, or withdrawal without notice. No liability of any kind is to be imposed on the broker herein.



AVAILABLE SUITES

Suite 201*	1,000 RSF	Available Now
Suite 203*	1,000 RSF	Available with Notice
Suite 304	1,459 RSF	Available Now
Suite 307	1,261 RSF	Available with Notice

**May be combined for 2,000 RSF*

BASE RENT

\$2.85/PSF, FSG

PARKING

\$50.00/Reserved Space per Month

AMENITIES

- Elevator Serviced and Professionally Managed Creative Building
- HVAC Available 24/7 at No Additional Cost as well as Operable Windows
- Rates Also Include Utilities, Building Services and Property Expenses
- Easy Access to 5, 170 and 134 Freeways
- Restaurants and Shopping within Walking Distance

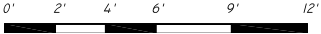
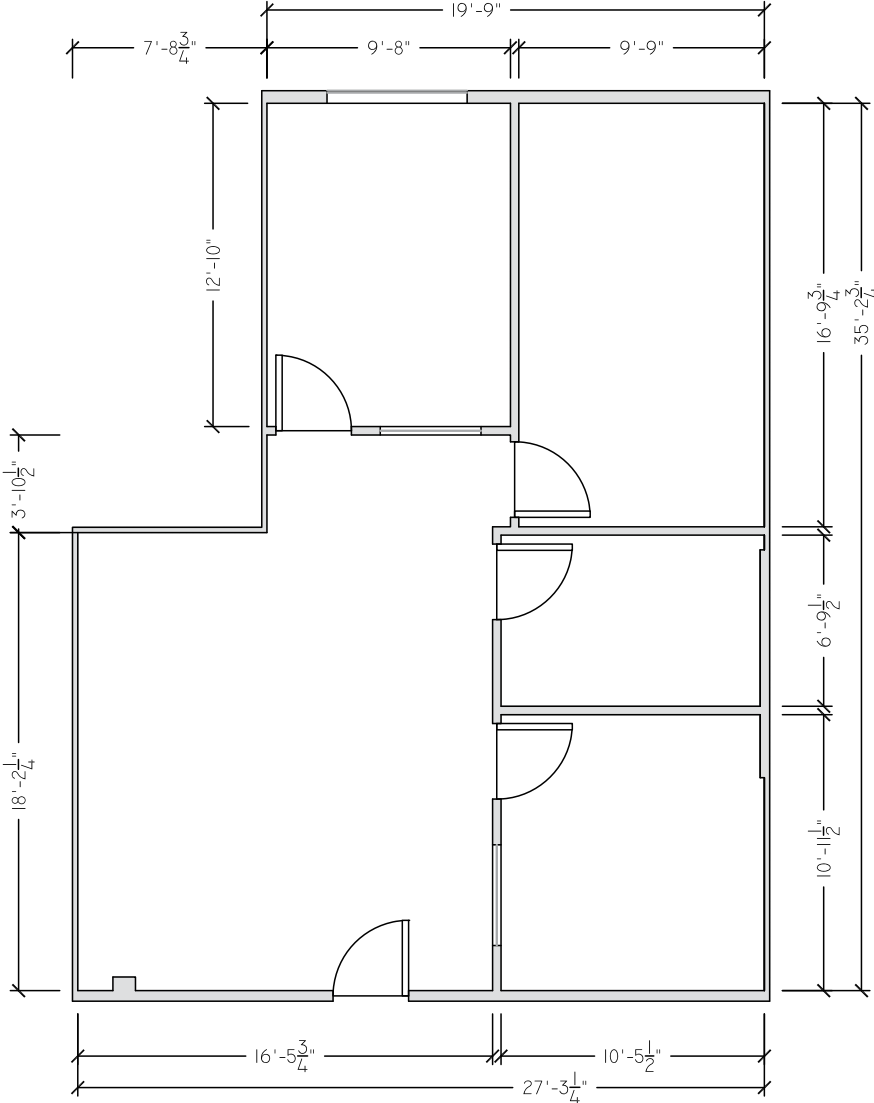


JENNIFER DONALDSON 818.933.0347

PRINCIPAL | DRE #01317737

JDONALDSON@LEE-RE.COM

SUITE 201 - 1,000 RSF

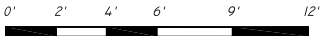
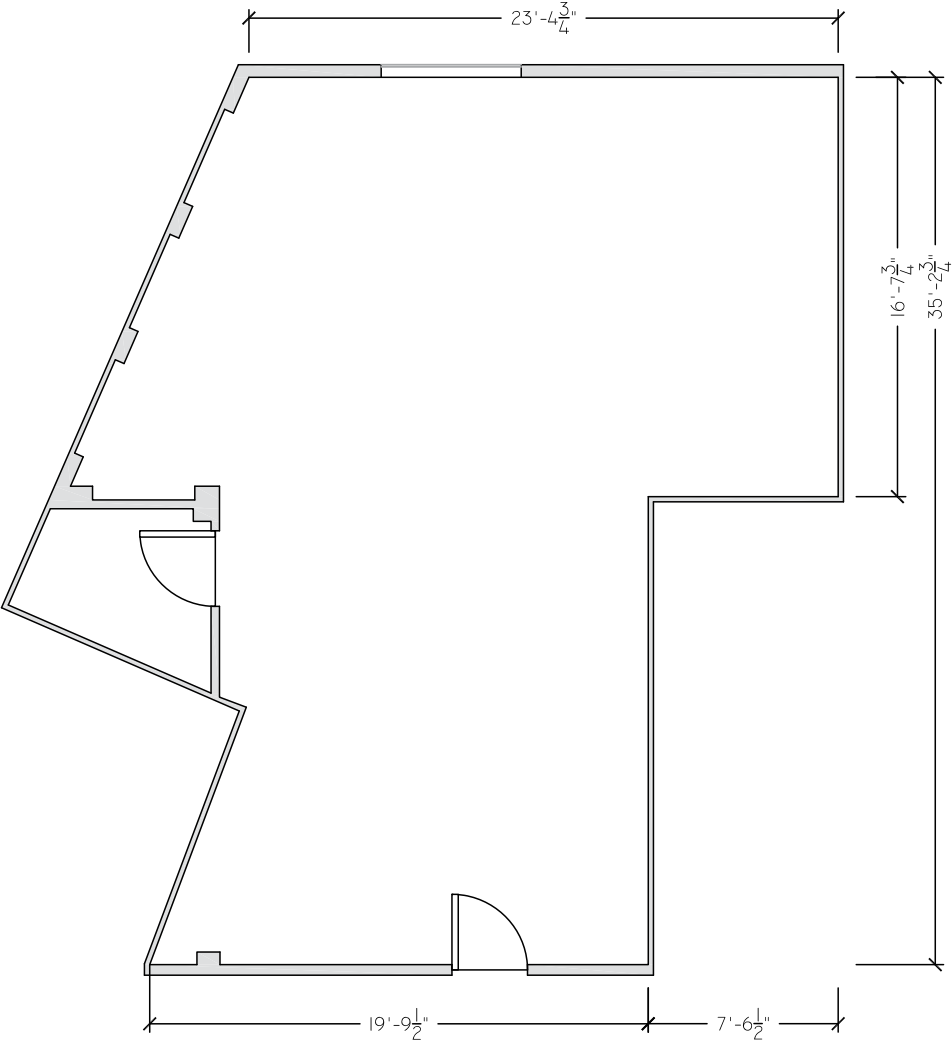


JENNIFER DONALDSON 818.933.0347

PRINCIPAL | DRE #01317737

JDONALDSON@LEE-RE.COM

SUITE 203 - 1,000 RSF

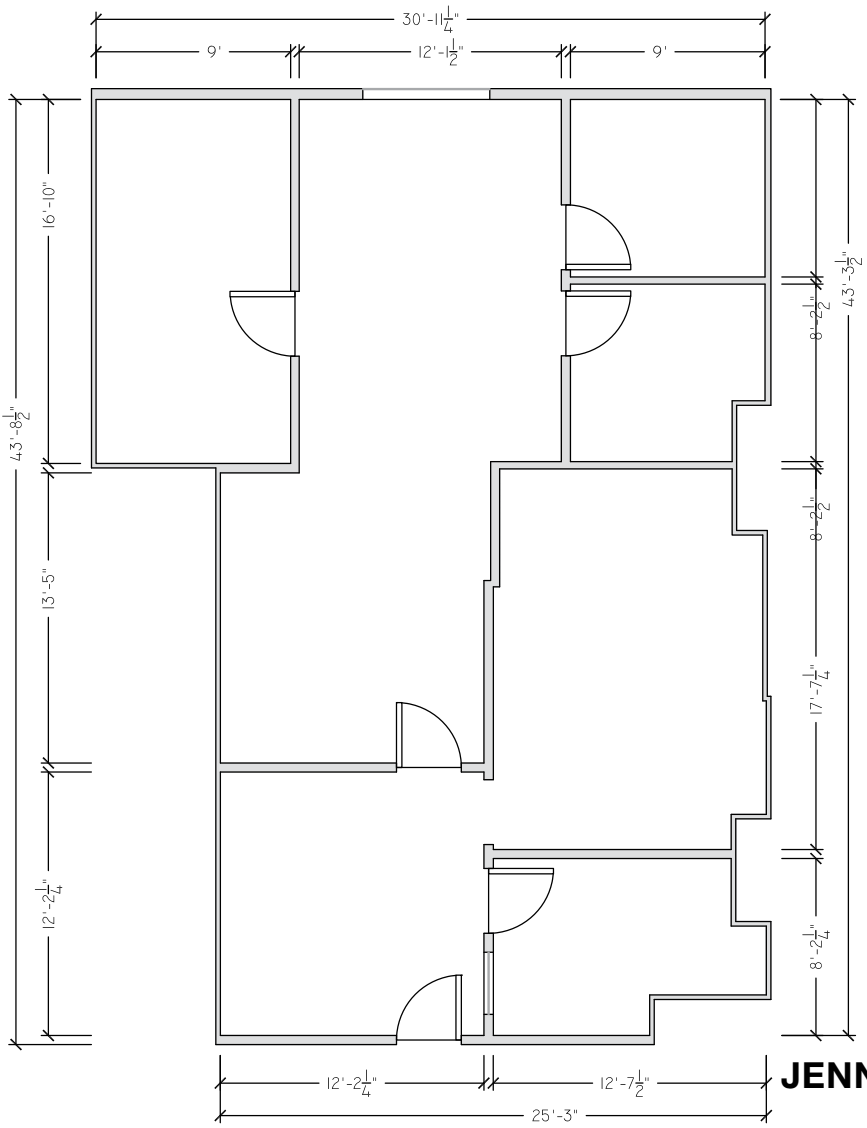
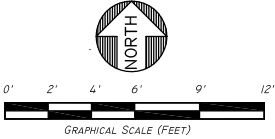


JENNIFER DONALDSON 818.933.0347

PRINCIPAL | DRE #01317737

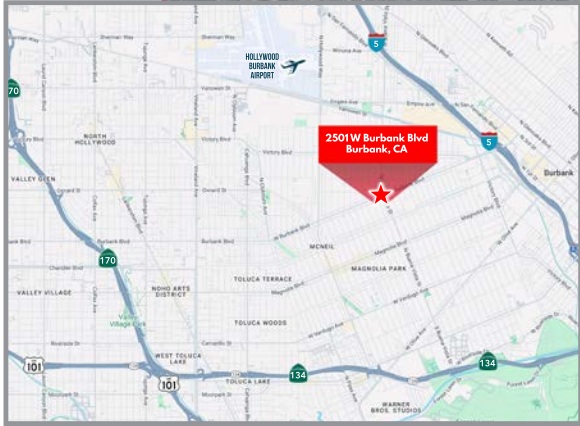
JDONALDSON@LEE-RE.COM

SUITE 304 - 1,459 RSF



JENNIFER DONALDSON 818.933.0347
PRINCIPAL | DRE #01317737
JDONALDSON@LEE-RE.COM





JENNIFER DONALDSON 818.933.0347

PRINCIPAL | DRE #01317737

JDONALDSON@LEE-RE.COM