

OFFICE SUITES FOR LEASE Colonial Professional Center

Carlsbad
Village Drive



1207 CARLSBAD VILLAGE DRIVE, CARLSBAD, CA 92008

MARTIN F. ALFARO

Associate Vice President
(858) 598-2890
Martin@PacificCoastCommercial.com
Lic. 01230078

PACIFIC COAST COMMERCIAL

10721 Trenea Street, Suite 200
San Diego, CA 92131
www.PacificCoastCommercial.com
Lic. 01209930


**PACIFIC COAST
COMMERCIAL**
SALES - MANAGEMENT - LEASING

PROPERTY FEATURES

Overview



- 2 Tiered Office Building With Direct Access
- Monument and Building Signage Available
- Plenty of Onsite and Street Parking



Availability

Suites From ± 248 RSF to 676 RSF



Ideal Location

- Property is Immediately Next to Highway 5 Off Ramp and Across from City Hall
- Conveniently Located within Walking Distance to Downtown Carlsbad Restaurants, Beaches & Stores
- Ideal Location for Professional/Company Servicing all of the North County Market with its Proximity to I-78
- Strong Area Demographics with 73,000 Households within a 5 Mile Radius
- Ingress/Egress on both Pio Pico and Carlsbad Village Drive

1207 CARLSBAD VILLAGE DRIVE

Carlsbad, CA 92008

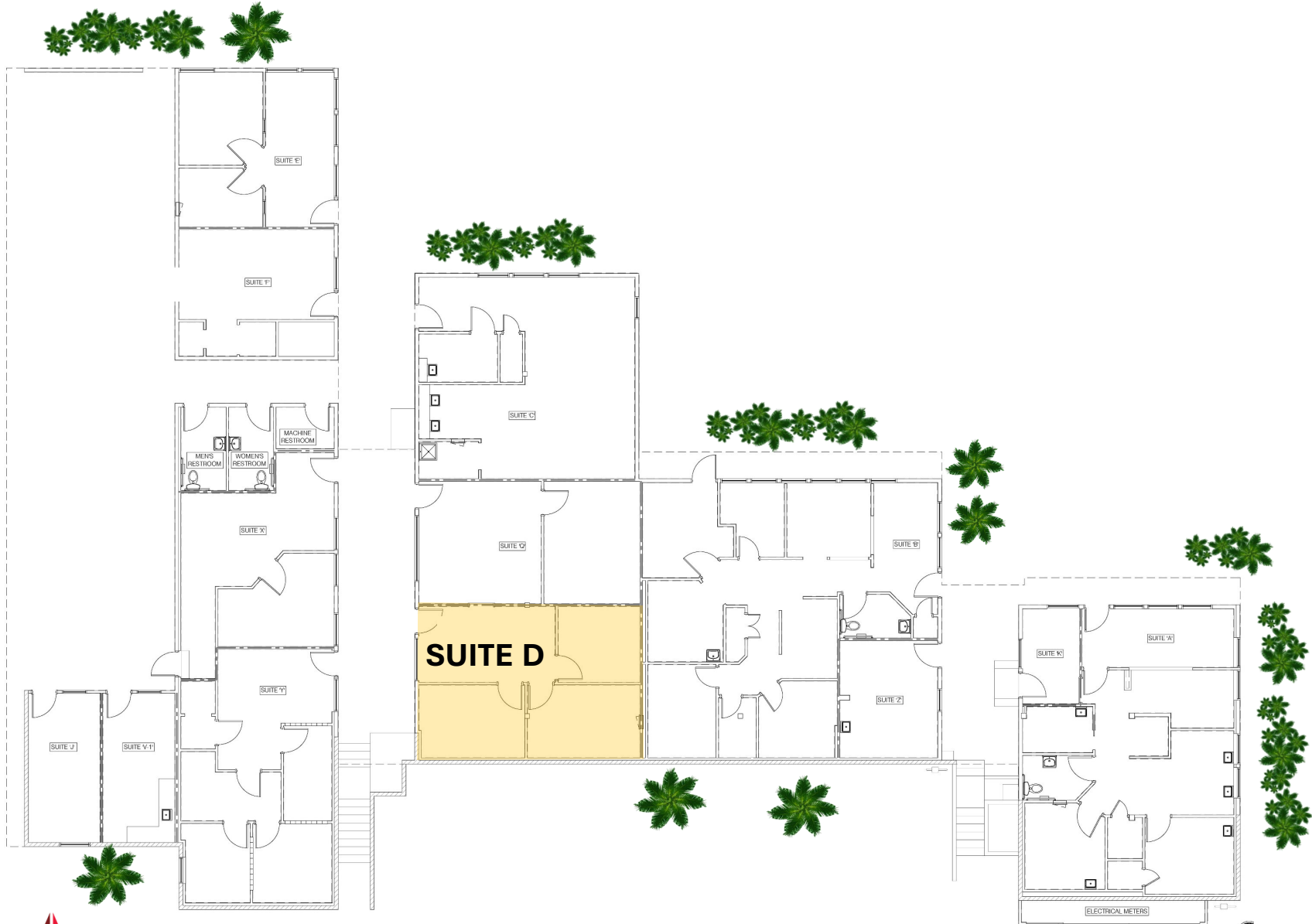


Contact Agent For Rates
Negotiable + E & J

FLOOR PLAN


SUITE	SIZE	\$/MONTH	COMMENTS
-------	------	----------	----------

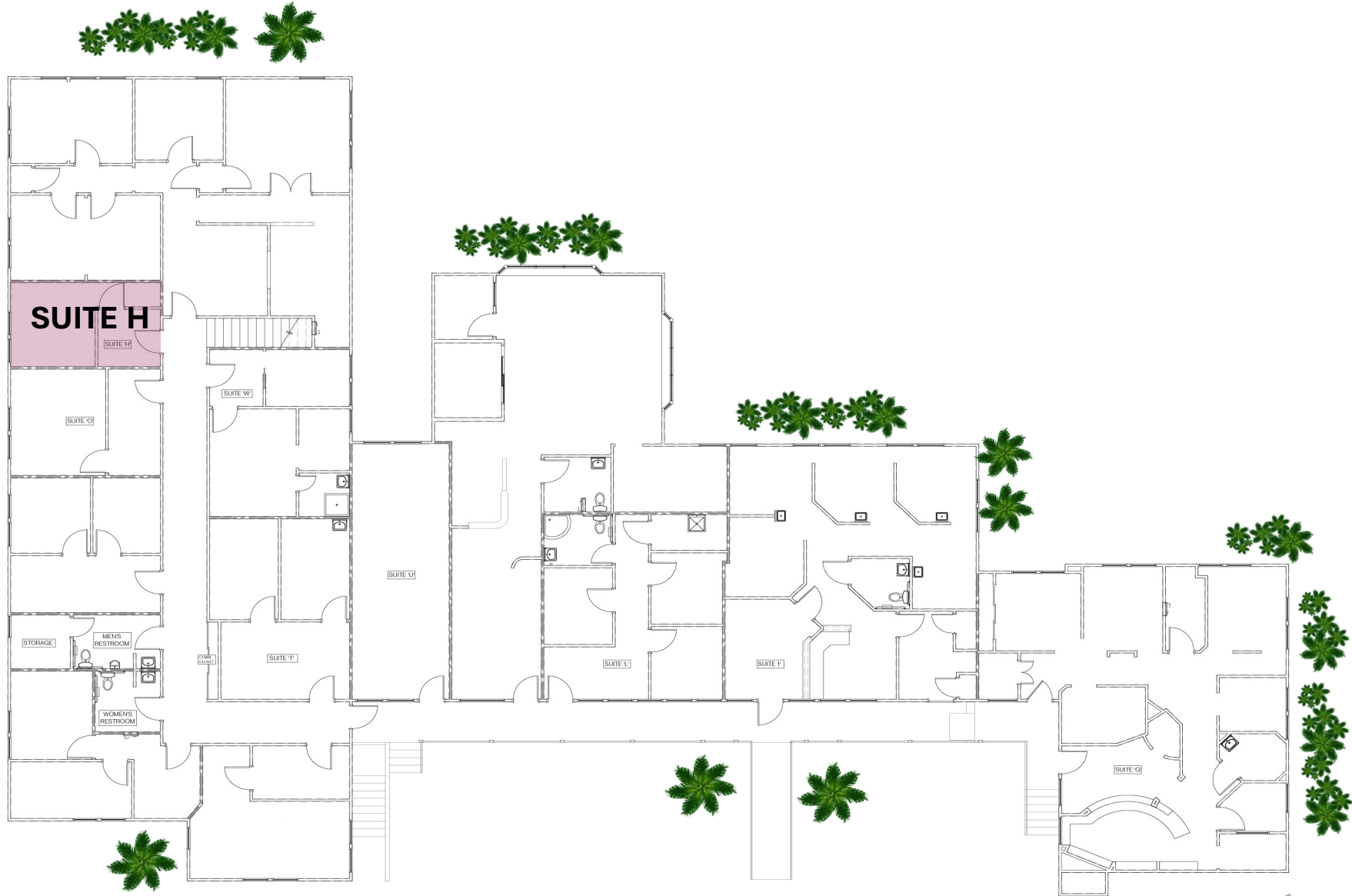
▶ D	676 RSF	Negotiable + E & J	Reception and 3 Private Offices
-----	---------	-----------------------	---------------------------------



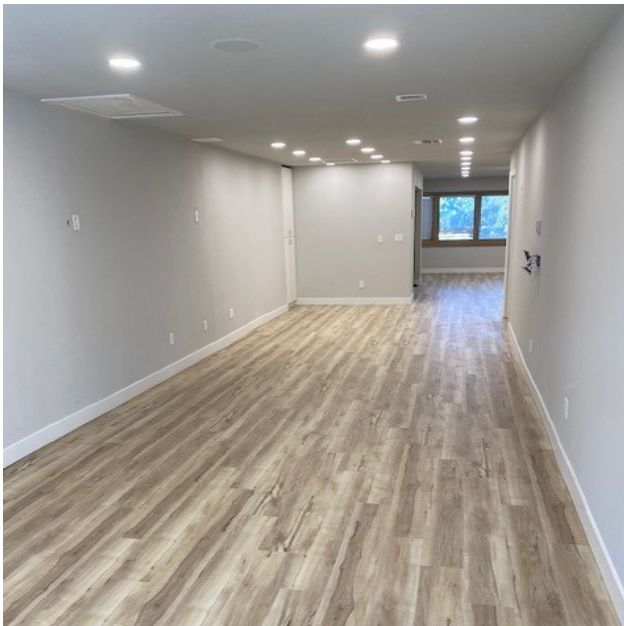
FLOOR PLAN

SUITE	SIZE	\$/MONTH	COMMENTS
-------	------	----------	----------

 H	248 RSF	Negotiable + E & J	Reception and 1 Private Office
---	---------	-----------------------	--------------------------------



INTERIOR PHOTOS



MARTIN F. ALFARO

Associate Vice President
(858) 598-2890
Martin@PacificCoastCommercial.com
Lic. 01230078

PACIFIC COAST COMMERCIAL

10721 Trenea Street, Suite 200
San Diego, CA 92131
www.PacificCoastCommercial.com
Lic. 01209930

The information contained herein has been given to us by the owner of the property or other sources we deem reliable, we have no reason to doubt its accuracy, but we do not guarantee it. All information should be verified prior to lease.





DEMOGRAPHICS



198,231

full time population



38

median age



\$108,707

avg. household income



20,923

traffic counts



\$2.6 B+

consumer spending



12,083

total businesses

Demographics Based on a 5-Mile Radius | Information Via CoStar

MARTIN F. ALFARO

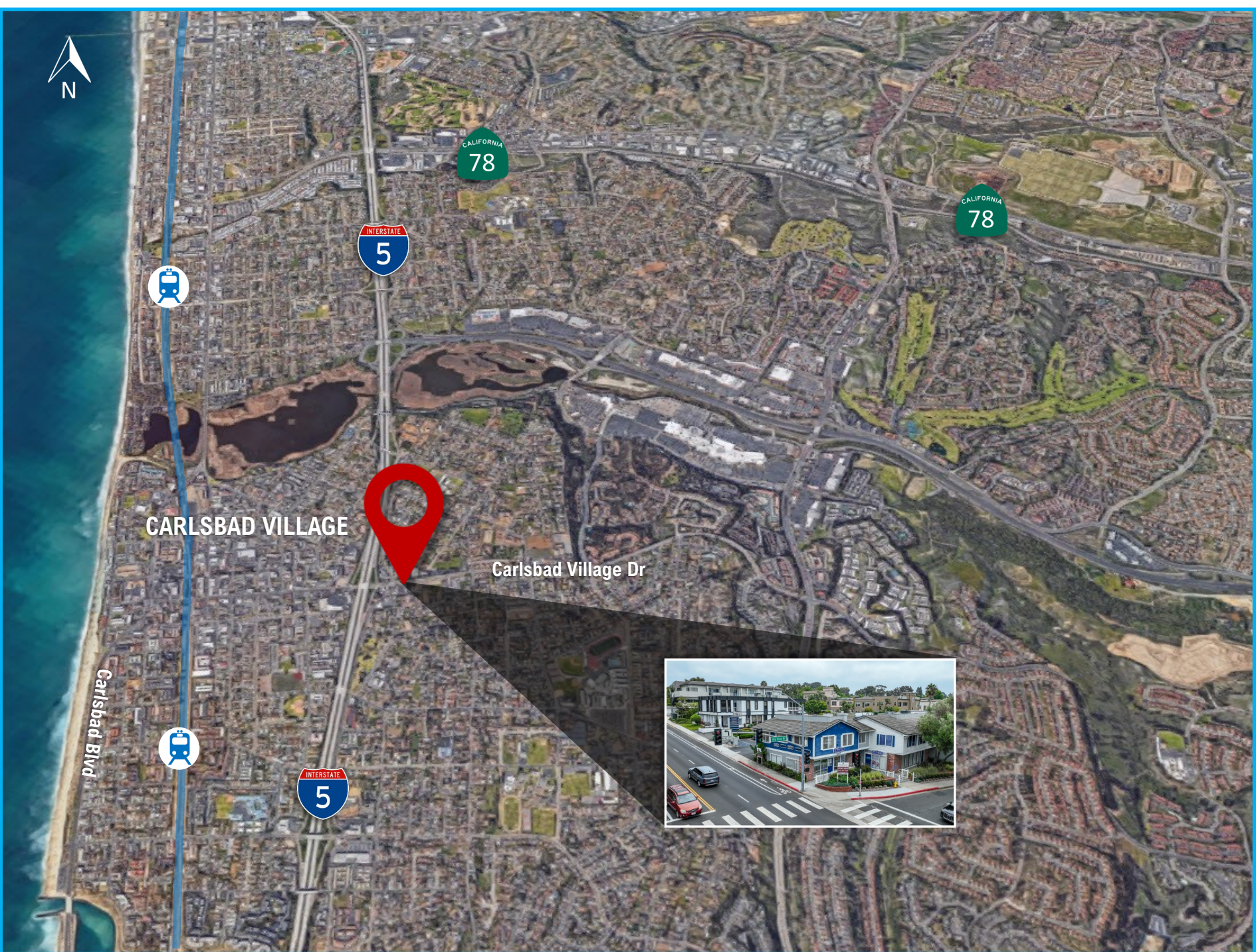
Associate Vice President
 (858) 598-2890
 Martin@PacificCoastCommercial.com
 Lic. 01230078

PACIFIC COAST COMMERCIAL

10721 Treena Street, Suite 200
 San Diego, CA 92131
 www.PacificCoastCommercial.com
 Lic. 01209930



The information contained herein has been given to us by the owner of the property or other sources we deem reliable, we have no reason to doubt its accuracy, but we do not guarantee it. All information should be verified prior to lease.



CARLSBAD VILLAGE

Carlsbad Village Dr



Smart & Final



VONS

Lotus Thai San Diego



CONTACT INFORMATION

MARTIN F. ALFARO

Associate Vice President

(858) 598-2890

Martin@PacificCoastCommercial.com

Lic. 01230078

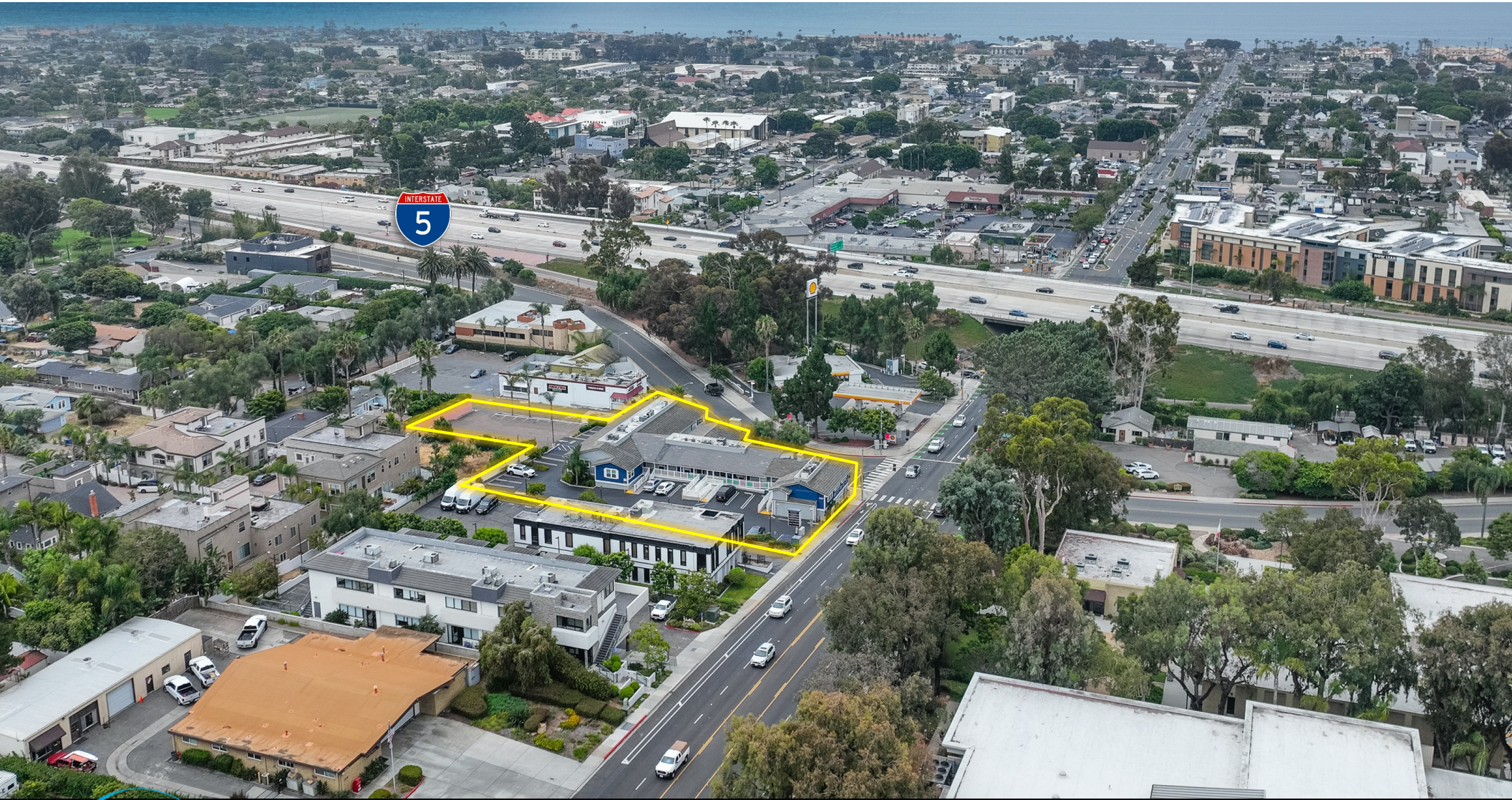
PACIFIC COAST COMMERCIAL

10721 Treena Street, Suite 200

San Diego, CA 92131

www.PacificCoastCommercial.com

Lic. 01209930



Carlsbad
Village Drive

The information contained herein has been given to us by the owner of the property or other sources we deem reliable, we have no reason to doubt its accuracy, but we do not guarantee it. All information, including zoning and use should be verified prior to transaction.