



9595 Wilshire Blvd

Beverly Hills, CA 90212

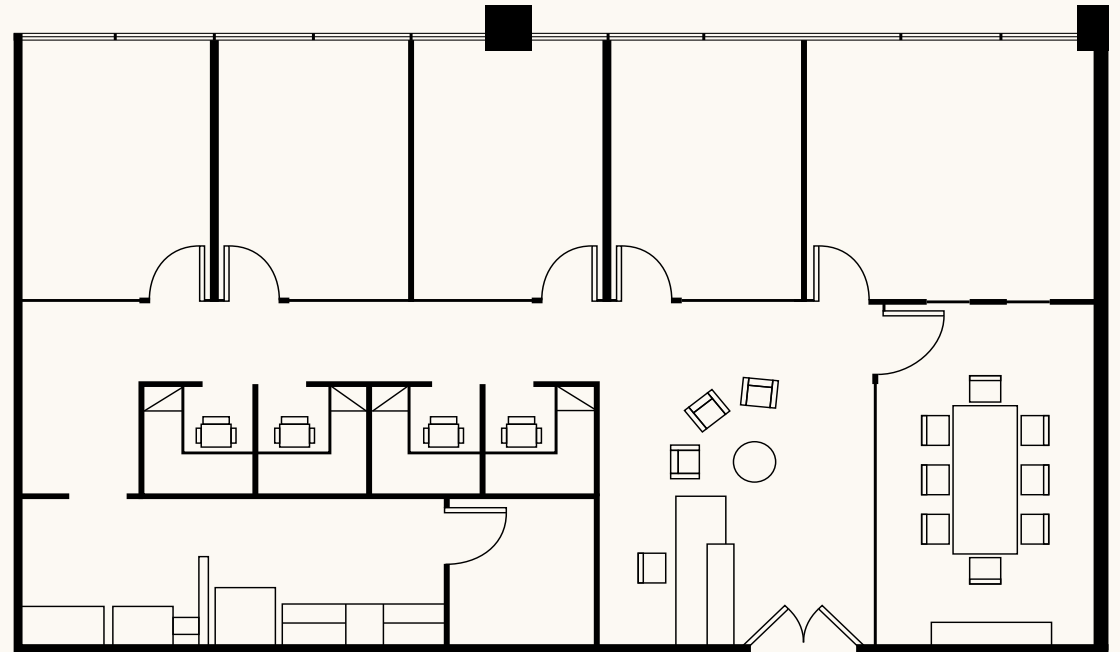
Premier Plug-and-Play Sublease | Move-In Ready

2,144 RSF Available Now
Term Through August 2032

Suite 304

2,144 RSF

Term Through 08/2032



- Newly built spec suite in 2022
- Double-door entry off the elevator
- Asking Rate: Negotiable
- FF&E available
- Executive corner office
- 4 private offices
- Conference room
- 4 workstations
- Kitchen, print/copy area, storage room

Highlights & Features



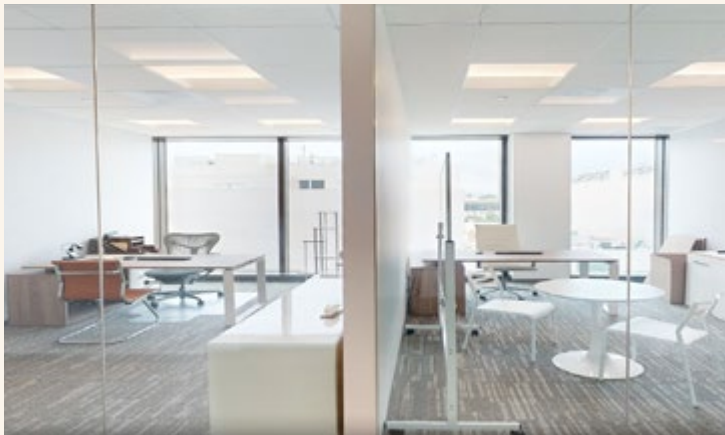
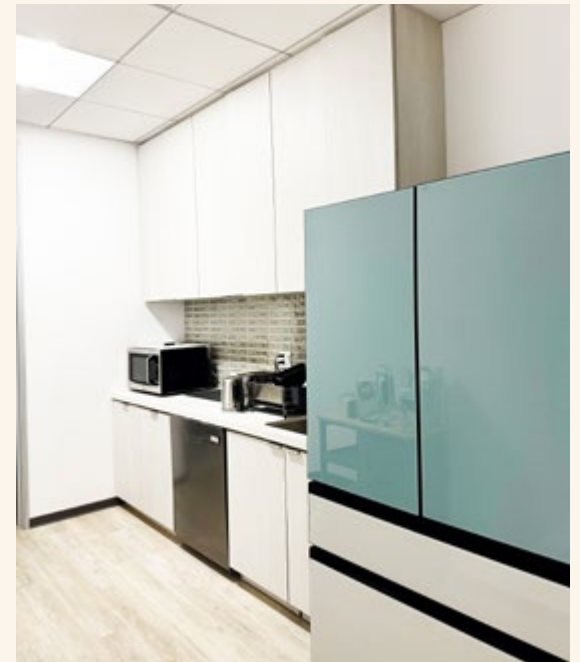
Located at the crossroads of Wilshire, Camden and Dayton Way, the entry of Beverly Hills Golden Triangle



Offering stunning views of Beverly Hills and the Hollywood Hills



AI-powered floor-to-ceiling windows automatically adjust to sunlight, eliminating glare, heat, and the need for blinds

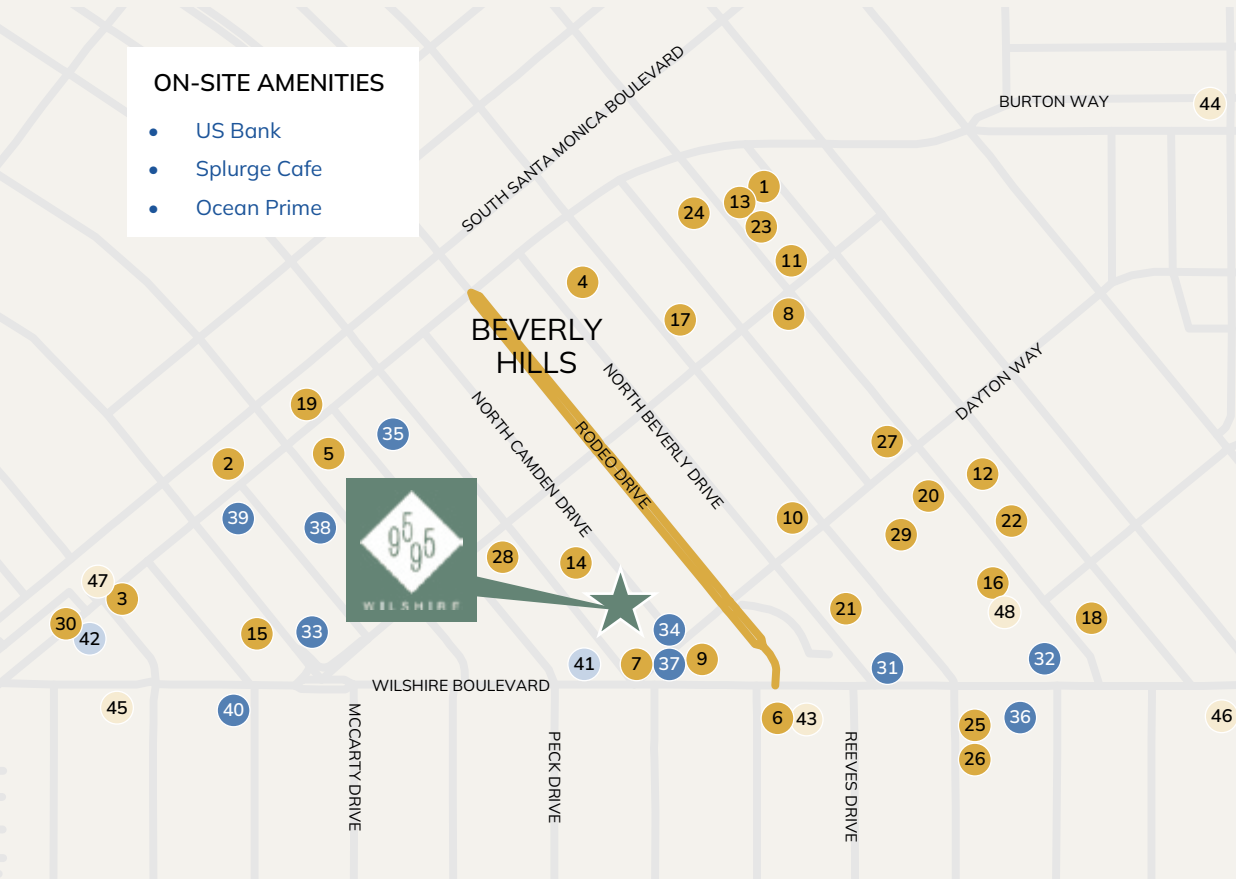


The Neighborhood

Work just steps from hundreds of premier shopping, service and dining options, including the renowned destinations of Rodeo Drive.



- ON-SITE AMENITIES**
- US Bank
 - Splurge Cafe
 - Ocean Prime



Restaurants

- 1 Funke
- 2 Yazawa
- 3 Espelette
- 4 The Farm of Beverly Hills
- 5 Crustacean
- 6 The BLVD Lounge
- 7 Ocean Prime
- 8 E.Baldo
- 9 The Grill
- 10 Il Fornaio
- 11 Il Pastaio
- 12 Mastro' Steakhouse
- 13 La Scala
- 14 Mr Chow
- 15 Mickey Fine
- 16 Dante Beverly Hills
- 17 Nate'n Al
- 18 Spago
- 19 Sprinkles Cupcakes
- 20 Palm Restaurant
- 21 AVRA
- 22 Sugarfish
- 23 Porta Via
- 24 Wally's
- 25 The Honor Bar
- 26 South Beverly Grill
- 27 Via Alloro
- 28 Brighton Coffee Shop
- 29 Sure Le Vert Wine Bar
- 30 La Dolce Vita

Banks

- 31 Chase Bank
- 32 Citi
- 33 City National Bank
- 34 US Bank
- 35 Wells Fargo
- 36 Bank of America
- 37 Frist Republic Bank
- 38 HSBC
- 39 Comerica
- 40 Manufacturers Bank

Recreation

- 41 Equinox
- 42 Natural Pilates

Hotels

- 43 Beverly Wilshire
- 44 L'Ermitage Beverly Hills
- 45 The Peninsula
- 46 SIXTY
- 47 Waldorf Astoria
- 48 The Maybourne Hotel





Cassie Trosclair

Executive Vice President
cassie.trosclair@jll.com
+1 310 595-3613
California DRE # 02021435

Alexandra Scott

Associate
alexandra.scott@jll.com
+1 832 948 3460
California DRE # 02241723

Although information has been obtained from sources deemed reliable, neither Owner nor JLL makes any guarantees, warranties or representations, express or implied, as to the completeness or accuracy as to the information contained herein. Any projections, opinions, assumptions or estimates used are for example only. There may be differences between projected and actual results, and those differences may be material. The Property may be withdrawn without notice. Neither Owner nor JLL accepts any liability for any loss or damage suffered by any party resulting from reliance on this information. If the recipient of this information has signed a confidentiality agreement regarding this matter, this information is subject to the terms of that agreement. ©2026. Jones Lang LaSalle IP, Inc. All rights reserved.