

25362 CYPRESS AVENUE

FOR LEASE | INDUSTRIAL WAREHOUSE WITH PARKING

TCP
TOUCHSTONE
COMMERCIAL PARTNERS



WWW.TCPRE.COM

CHRISTIAN DIGGS

415.710.0932 | cdiggs@tcpre.com

JACK DYKE

415.518.7523 | jdyke@tcpre.com

25362 CYPRESS AVENUE

PROPERTY SUMMARY

ADDRESS

25352-25362 Cypress Avenue, Hayward, CA 94544

AVAILABLE SPACE

±4,600 Square Feet

RENTAL RATE

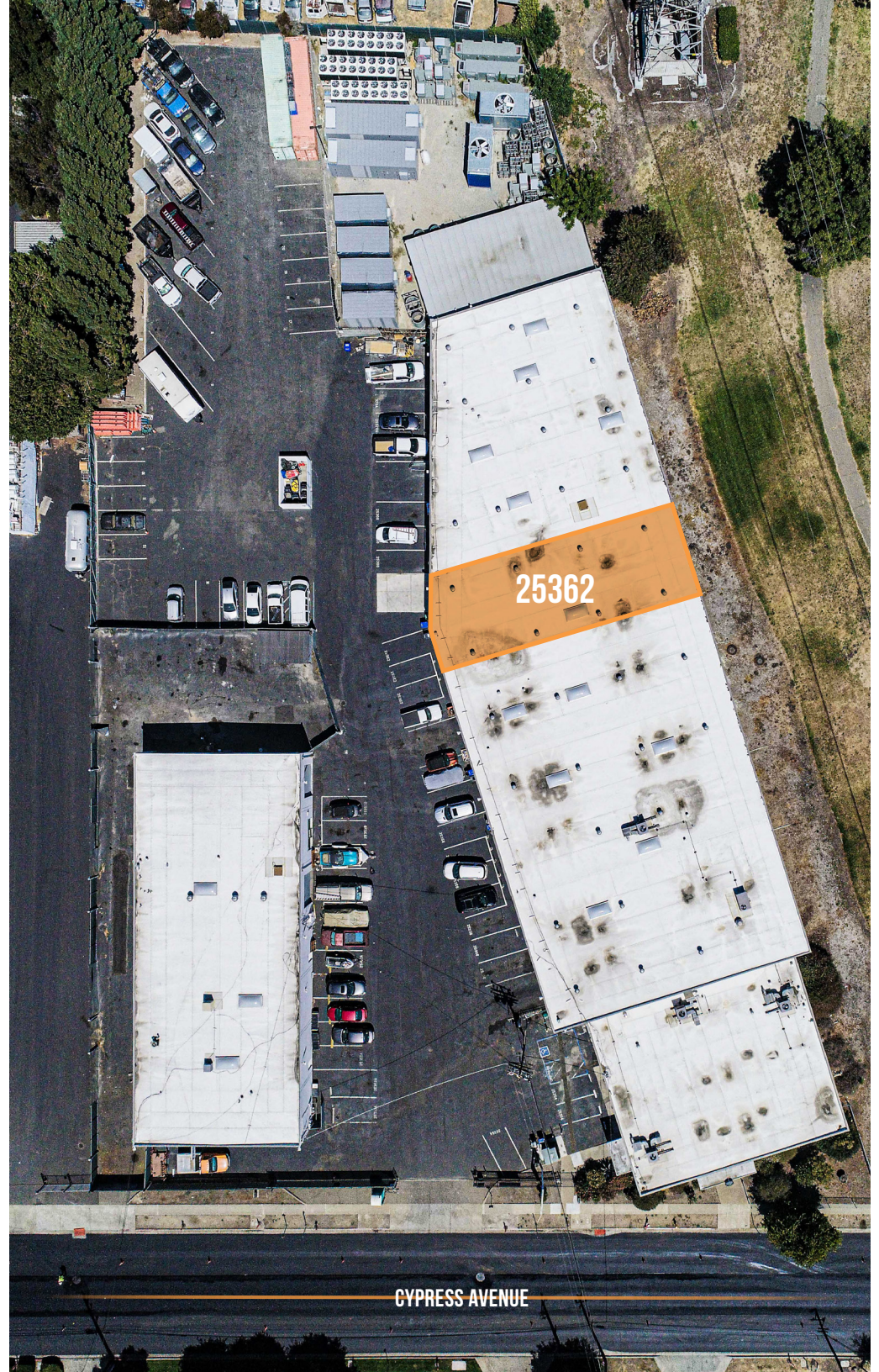
\$1.60 / Square Foot / Month, Industrial Gross

AVAILABLE

August 1, 2026

PROPERTY ATTRIBUTES

- + Open Warehouse Space with 16' Ceiling
- + Fully Sprinklered
- + Striped Parking Lot
- + Close Proximity to I-880



25362 CYPRESS AVENUE

UNIT SUMMARY

UNIT SIZE

± 4,600 Square Feet

RENTAL RATE

\$7,360 / Month, Industrial Gross

ZONING

IL - Light Industrial

AVAILABLE

August 1, 2026

UNIT ATTRIBUTES

- + ±4,300 SF of Warehouse with ±300 SF of Office
- + 200amps, 3 Phase Power (Tenant to confirm)
- + One (1) Grade Level Roll-Up Door 10' w x 15' h
- + Open Warehouse with 16' Ceiling
- + Two (2) Office Spaces
- + One (1) Bathroom
- + Fully Sprinklered

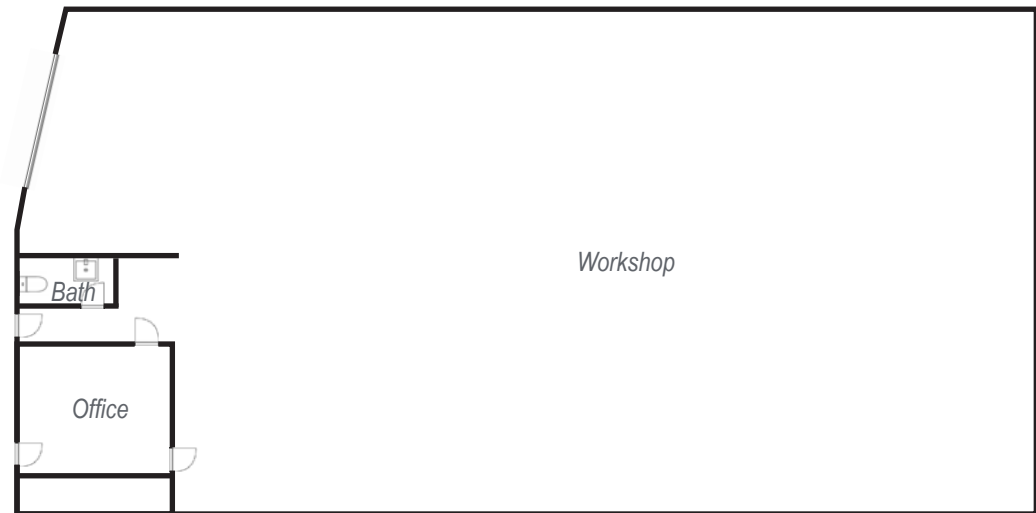


25362 CYPRESS AVENUE

FLOOR PLAN

± 4,600 Square Feet

GROUND FLOOR

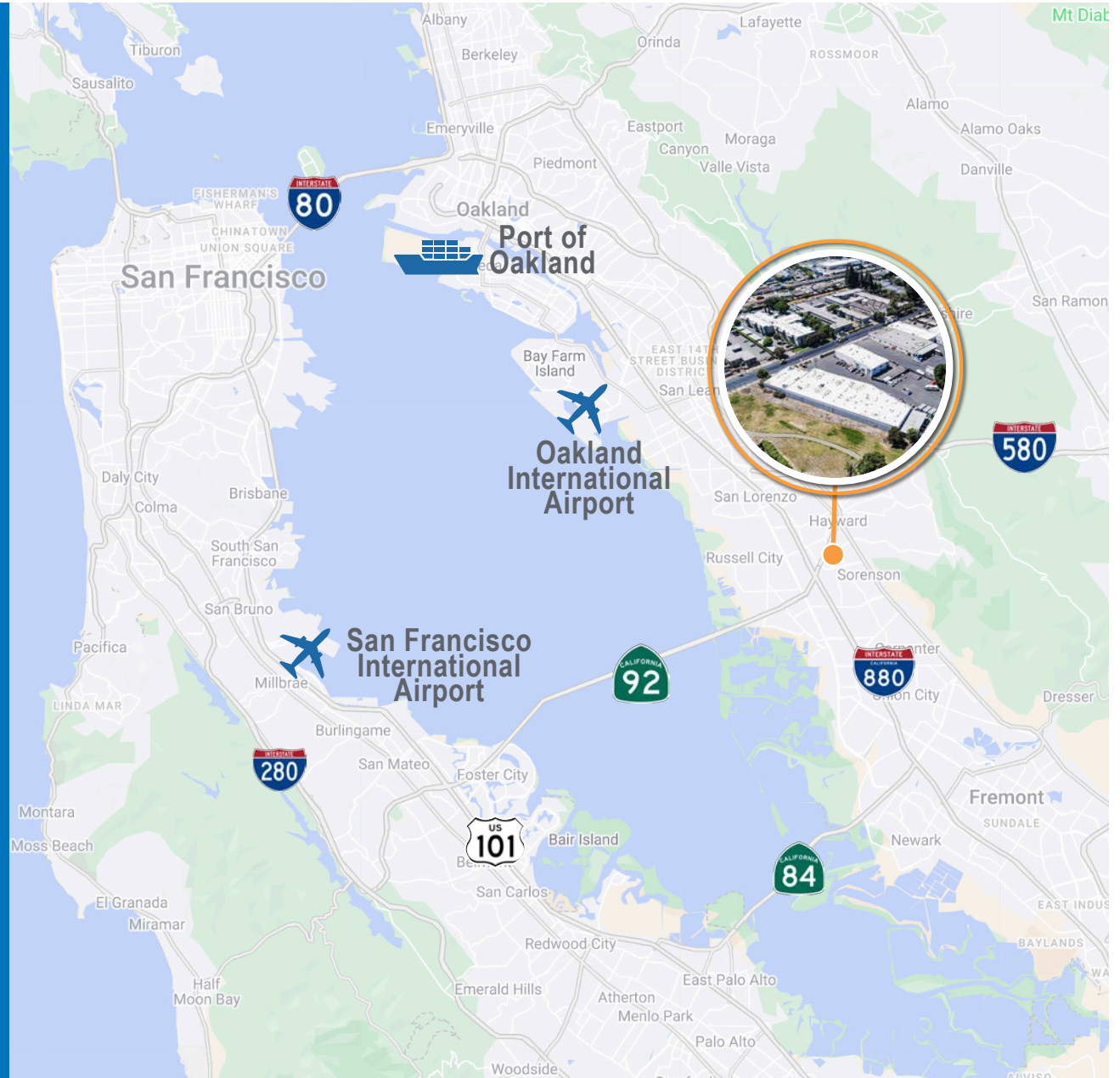


25362 CYPRESS AVENUE

LOCATION OVERVIEW

Desirable location in the city of Hayward, centrally located along the CA-92 / I-880 corridor with easy access to all corners of the greater Bay Area.

- + SAN FRANCISCO - 28 Miles
- + SFO AIRPORT - 21 Miles
- + OAKLAND AIRPORT - 10 Miles
- + PORT OF OAKLAND - 16 Miles
- + SAN MATEO - 16 Miles
- + OAKLAND INTERMODAL FACILITY - 17 Miles
- + HIGHWAY I-880 - 2.4 Miles
- + HIGHWAY 84-DUMBARTON BRIDGE - 7.7 Miles
- + HIGHWAY I-680 - 16 Miles



25362 CYPRESS
AVENUE



CHRISTIAN DIGGS DRE # 1865276
415.710.0932 | cdiggs@tcpre.com

JACK DYKE DRE # 02255631
415.518.7523 | jdyke@tcpre.com

Corp. Lic. 01112906
www.tcpre.com

The information presented has been secured from sources we believe to be reliable but we make no representations or warranties, expressed or implied, as to the accuracy of the information. Lessee must verify the information and bears all risk for any inaccuracies.