



Winter Park Medical Building

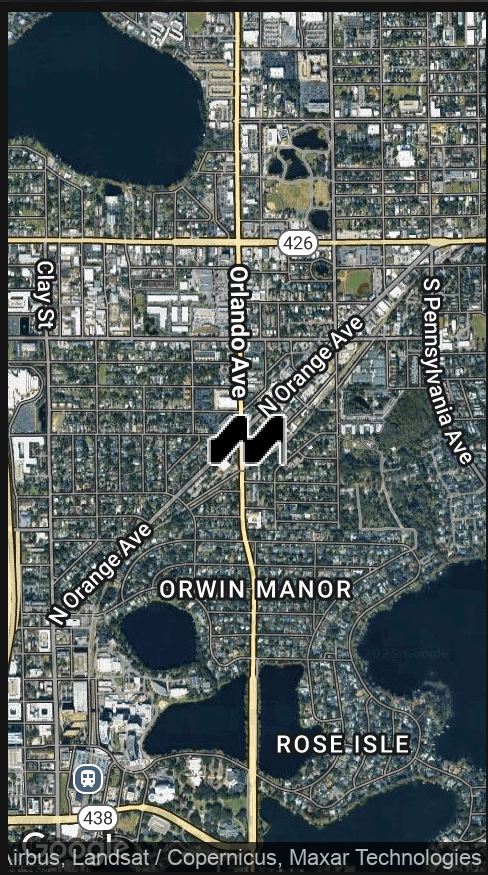
1400 S ORLANDO AVE, WINTER PARK, FL 32789

Location Overview

The Winter Park Professional Building is close to all major highways, Downtown Orlando, and Park Avenue, and offers fantastic office space, great for any business looking to be in the Winter Park MSA and close by to Downtown simultaneously.

A wealth of medical and professional services occupy the building to serve the immediate area creating a synergistic environment.

Tenants benefit from ample parking and on-site property management with maintenance tech available when needed.



FOR MORE INFORMATION | [MILLENNIA-PARTNERS.COM](https://www.millenia-partners.com)

PRESENTED BY
JOSIAH MOORE

407.304.8485

Briang@millenia-partners.com



PROPERTY SUMMARY

1400 S ORLANDO AVE, WINTER PARK, FL 32789

Winter Park Medical Building



PROPERTY DESCRIPTION

Fully built-out 1st-floor medical office suite with multiple private exam rooms, suitable for any medical business looking to serve the local community. Winter Park Medical Building offers synergistic co-tenancy, close proximity to Winter Park and Downtown Orlando, monument signage along with an interior tenant board.

PROPERTY HIGHLIGHTS

- 24-Hour access
- Monument signage
- Bus line

OFFERING SUMMARY

Lease Rate:	\$22.00 SF/yr (NNN)
Available SF:	1,620 - 2,226 SF
Lot Size:	0.85 Acres
Building Size:	21,000 SF

SPACES	LEASE RATE	SPACE SIZE
Suite 204	\$22.00 SF/yr	1,704 SF
Suite 100	\$22.00 SF/yr	2,226 SF
Suite 304	\$22.00 SF/yr	1,620 SF

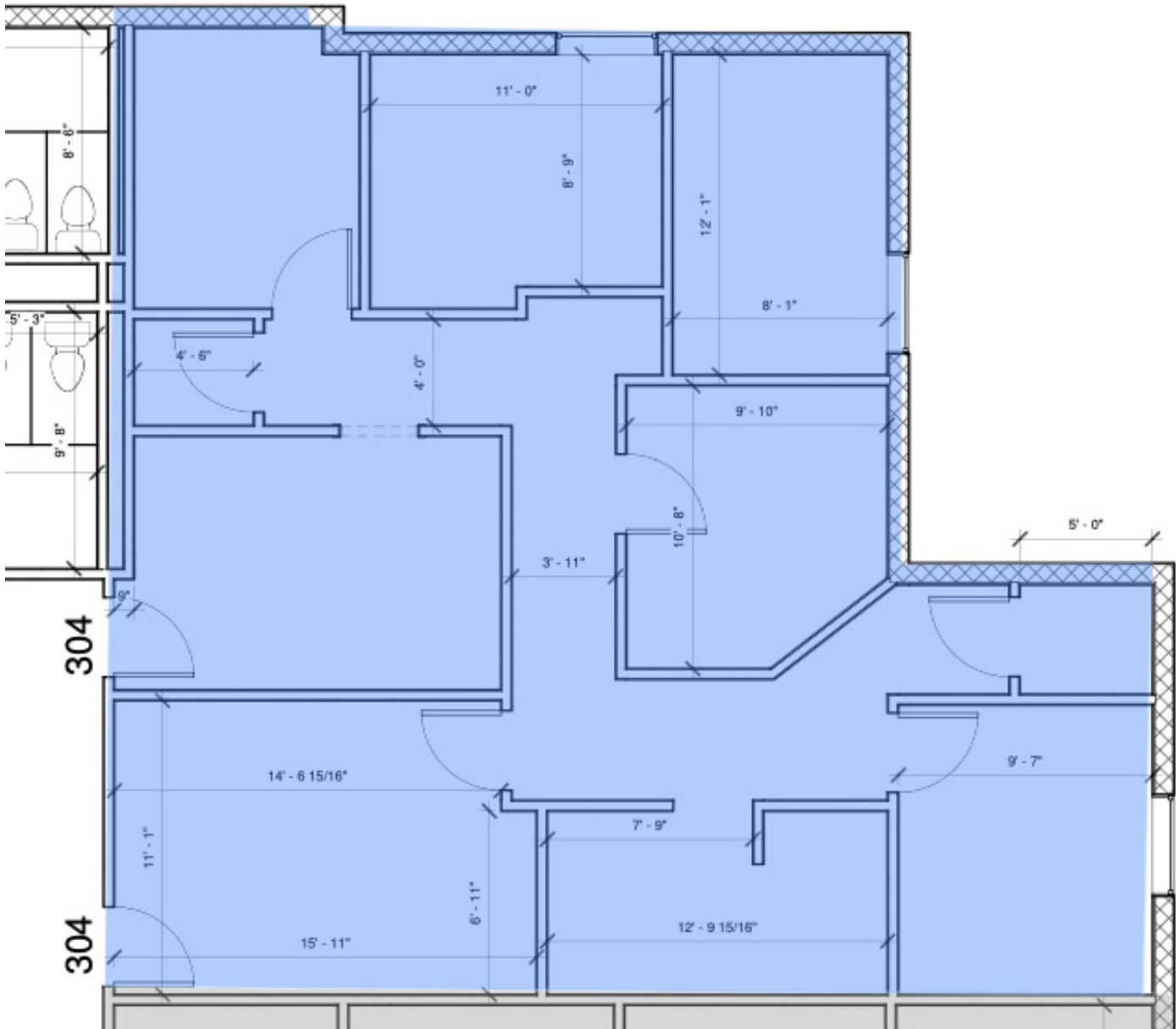
PRESENTED BY
JOSIAH MOORE
407.304.8485
Briang@millenia-partners.com

OFFICE BUILDING
For Lease

SUITE 304

1400 S ORLANDO AVE, WINTER PARK, FL 32789

Winter Park Medical Building



PRESENTED BY
JOSIAH MOORE
407.304.8485
Briang@millenia-partners.com

OFFICE BUILDING
For Lease

LOCATION MAPS

1400 S ORLANDO AVE, WINTER PARK, FL 32789

Winter Park Medical Building



Google

Map data ©2024 Google Imagery ©2024 Airbus, Maxar Technologies

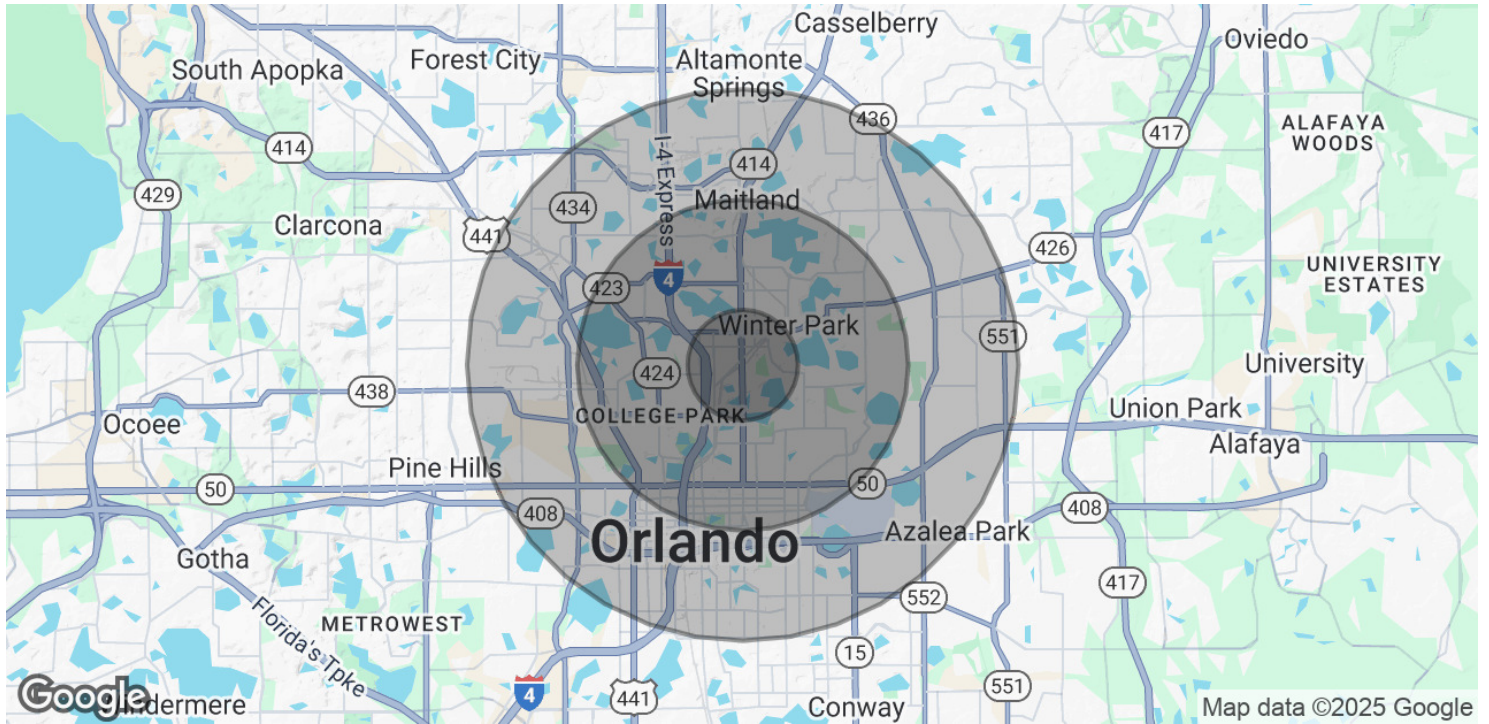
PRESENTED BY
JOSIAH MOORE
407.304.8485
Briang@millenia-partners.com

OFFICE BUILDING
For Lease

DEMOGRAPHICS MAP & REPORT

1400 S ORLANDO AVE, WINTER PARK, FL 32789

Winter Park Medical Building



POPULATION

	1 MILE	3 MILES	5 MILES
Total Population	7,847	80,943	235,550
Average age	41.7	39.0	37.6
Average age (Male)	39.7	38.3	36.1
Average age (Female)	44.9	40.2	39.1

HOUSEHOLDS & INCOME

	1 MILE	3 MILES	5 MILES
Total households	3,782	35,892	101,732
# of persons per HH	2.1	2.3	2.3
Average HH income	\$93,861	\$91,857	\$73,700
Average house value	\$474,856	\$409,334	\$341,326

TRAFFIC COUNTS

Orlando Avenue and Orange Avenue 26,500/day

* Demographic data derived from 2020 ACS - US Census

PRESENTED BY
JOSIAH MOORE
 407.304.8485
 Briang@millenia-partners.com

OFFICE BUILDING
For Lease