



# 159 West 25<sup>th</sup> Street

## CHELSEA PRIME RETAIL SPACE AVAILABLE

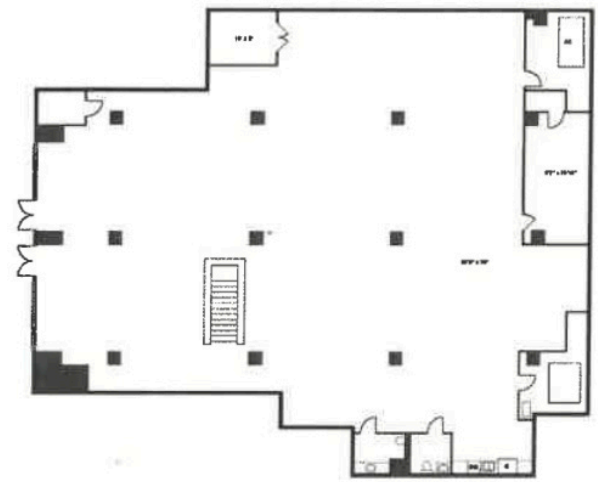
4,827 SF (Ground Floor)

4,543 SF (Lower Level)

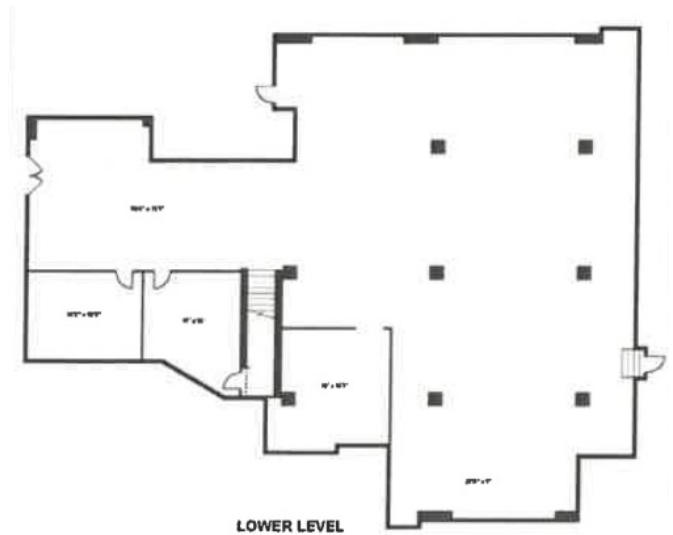
Call for pricing

### HIGHLIGHTS

- Prime Chelsea Retail Space opportunity
- Former “Zoom Room” space
- High ceilings
- Hardwood floors
- Tenant controlled HVAC system
- All uses considered
- Approximately 32' of windowed frontage
- Double glass entry doors
- Large lower level
- Remodeled restrooms



GROUND FLOOR



LOWER LEVEL



**BRETT ROVNER**

Director

P 516.668.0213 | E brovner@akam.com

**RANDOLPH LEWIS**

Associate Broker

P 917.686.1882 | E rlewis@akam.com

[AKAMSALES.COM](http://AKAMSALES.COM)