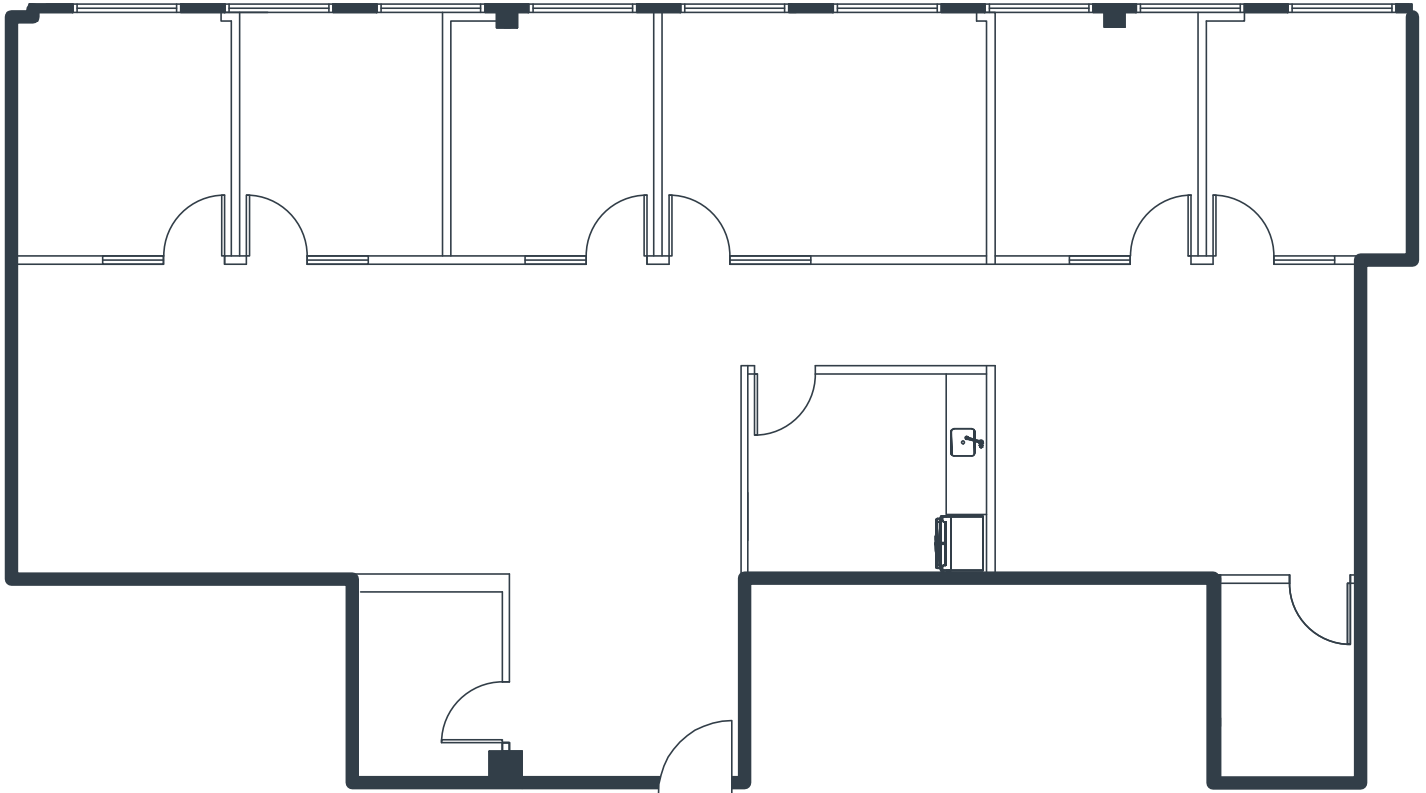


# ONE VENTURE PLAZA

One Venture, Suite 340  
Irvine, CA

2,364 Square Feet

Call for Pricing  
Full Service Gross



## NOTES

Reception  
6 Window Offices  
Kitchen  
2 Storage Rooms  
Large Open Work Area  
Part of a Professionally Managed Business Park

Created by Olen Commercial Realty Corp., 2022.  
Information is not to be published or copied without  
written approval. Square footage and floor plans are  
estimates and should be separately verified. All rates,  
terms, floor plans, and building facts are subject to  
change without notice.

ea 02.19.2026

**KEVIN MORGENSTERN**

Vice President

949.719.7206

kmorgenstern@olen.com



Seven Corporate Plaza

Newport Beach, CA

949.644.6536

www.olen.com