

1455 THIRD STREET PROMENADE

SANTA MONICA, CA 90401

RETAIL SPACE FOR LEASE



MARISA RENFRO Vice President | Lic.#02178774 | +1 949 922 7278 | marisa.renfro@cbre.com

GREG BRIEST First Vice President | Lic.#01949565 | +1 818 800 4492 | greg.briest@cbre.com

HOUMAN MAHBOUBI Senior Vice President | Lic.#01450237 | +1 310 550 2651 | houman.mahboubi@cbre.com



WELCOME TO SANTA MONICA

The world-class-city of Santa Monica has long offered retailers of the west coast a prime destination rich in residential population and consumer markets.

1455 Third Street Promenade sits at the intersection of live and play, positioning itself beside the bustling tourist a traction of Third Street Promenade.

	1 MILE	3 MILES	5 MILES
2023 POPULATION	35,577	168,904	410,782
2023 AVG HOUSEHOLD INCOME	\$159,813	\$180,566	\$175,786
2023 HOUSEHOLDS	20,294	84,264	189,263
2023 PLACE OF WORK	5,329	17,657	34,407 (BUSINESSES)
	44,552	138,233	371,959 (EMPLOYEES)



1455 THIRD STREET PROMENADE PROPERTY HIGHLIGHTS

USE

Ground Floor Retail Space directly on Third Street Promenade

SIZE

±3,537 RSF Retail

**ASKING
RATE**

Contact Broker

**TERM
REMAINING**

Negotiable through 2032

LOCATION

- All Saints
- Nike
- Tesla
- Din Tai Fung
- Johnny Was
- Coach
- Free People
- Cheesecake
- Factory
- Intimissimi
- Tumi
- Paige



Broadway



- Lululemon 1457
- Available 1455
- Available 1453
- Available 1451B
- Available (Pop Up) 1451
- Available 1441
- Culto 1437
- .Uniqlo 1431
- Available 1429
- Henna Shop, Its Sugar, Available 1427
- Apple 1415
- Aldo 1413
- Lids 1413
- Puzzle Zoo 1411
- Beyond Yoga 1409
- Sunsations Sunglasses 1407
- Available 1403-1405
- Raising Cane's (coming soon) 1401

3rd Street Promenade

Broadway

- 1460 Google Store
- 1456 McConnell's
- 1452 Available
- 1450 Santa Monica Souvenirs
- 1446 Pacusn
- 1444 TMNT Restaurant (coming soon)
- 1440 Urban Outfitters
- 1432 JD Sports
- 1426 Sephora (coming soon)
- 1422 Alo
- 1418 Miniso
- 1416 Vans
- 1412 Bruxie
- 1210 El Husuba
- 1404 Available
- 1402 Anthropologie

Santa Monica Blvd

- Leased 1355
- Sand N Surf 1353
- Barney's Beaney 1435
- Wilson 1349
- Patagonia 1345
- Dodger's Clubhouse 1343
- Adidas 1337
- 2 Bella 1335
- Available 1333
- Sole & Laces 1331
- Abercrombie & Fitch 1325
- Cherokee of CA 1323
- Yogurtland 1321
- Silverlake Ramen 1319
- Holey Moley 1315
- Available 1311
- Victoria Secret 1311

Santa Monica Blvd

- 1360 HQ Gastropub (coming soon)
- 1356 Starbucks
- 1354 Seasons By
- 1350 Oakley
- 1348 Available
- 1344 Lids (coming soon)
- 1340 Wonders of the World
- 1340 Surrender Tattoo
- 1338 Zara
- 1334 Gallini
- 1334 Sunglass Hut
- 1322 Sketchers
- 1322 Available
- 1318 Barnes & Noble
- 1312 Coffee Bean
- 1310 AMC/Stefano's Pizza

Arizona Ave

- Footlocker 301
- Casa Martin 1251
- Available 1239-1249
- Ugo Trattoria 1237
- Burn Fitness 1233
- Pickle Pop 1231
- Available 1225-1227
- Santa Monica Art Museum 1219
- Dr Marten's 1215
- Available 1201

Arizona Ave

- 231 Gyukaku
- 1260 Available
- 1254 Available
- 1248 The Cube
- 1244 Sephora
- 1242 Gold & Diamond Buyers
- 1240 Cabo Cantina
- 1232 Museum of Illusions
- 1228 Outlandish
- 1222 Available
- 1220 Two Bit Circus
- 1218 Chipotle
- 1212 1212 Santa Monica
- 1202 John Reed Fitness

3rd Street Promenade

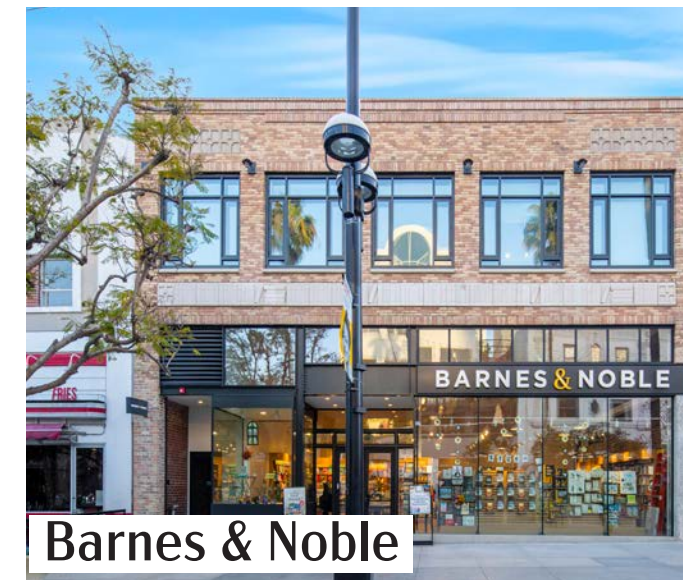
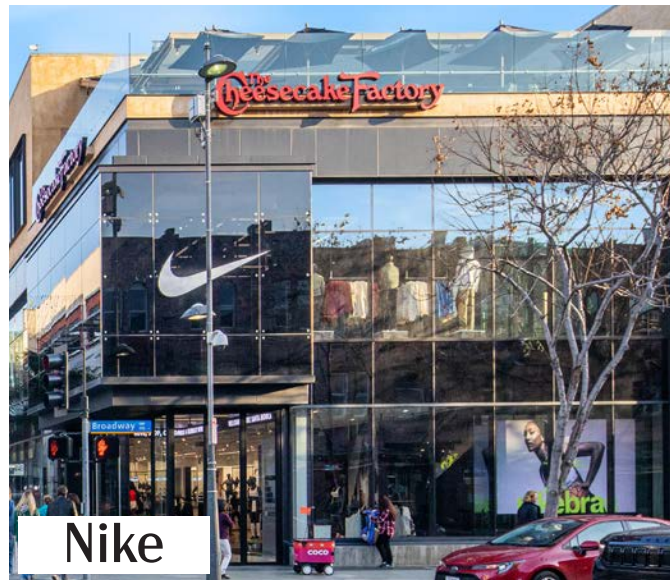
Wilshire Blvd

Wilshire Blvd

NEARBY TENANTS



NEARBY TENANTS



INTERIOR

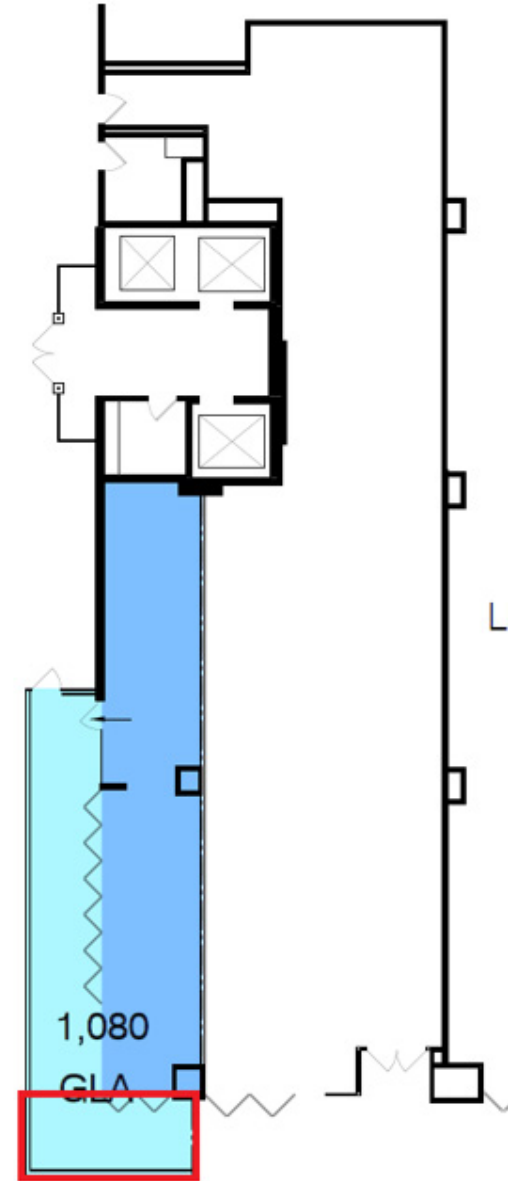
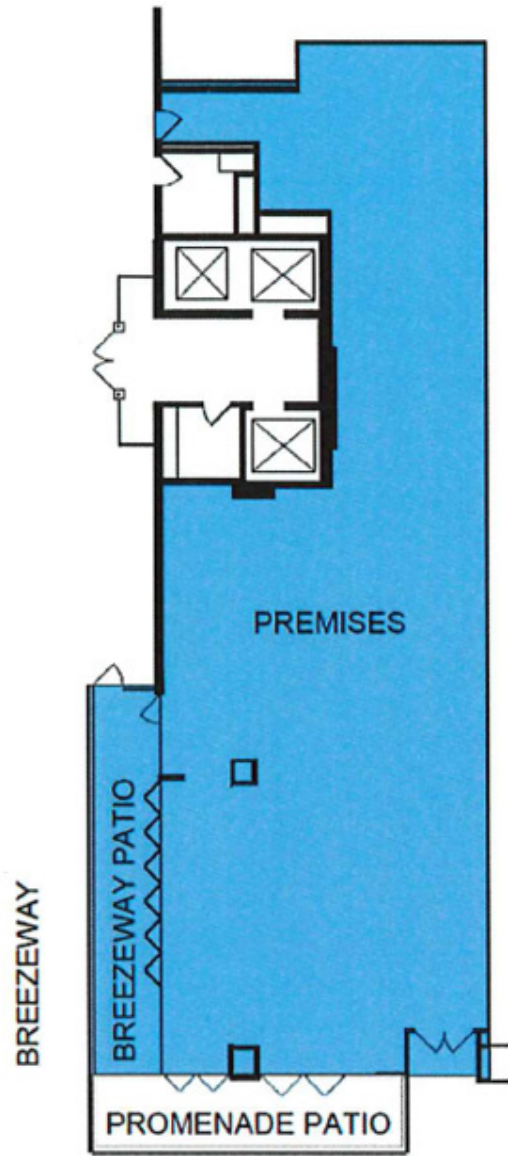


WRAPAROUND PATIO ON BREEZEWAY



FLOOR PLAN

±3,537 RSF Ground Floor Retail



MARISA RENFRO Vice President | Lic.#02178774 | +1 949 922 7278 | marisa.renfro@cbre.com

GREG BRIEST First Vice President | Lic.#01949565 | +1 818 800 4492 | greg.briest@cbre.com

HOUMAN MAHBOUBI Senior Vice President | Lic.#01450237 | +1 310 550 2651 | houman.mahboubi@cbre.com



© 2026 CBRE, Inc. All rights reserved. This information has been obtained from reliable sources but has not been verified for accuracy or completeness. CBRE, Inc. makes no guarantee, representation, or warranty and accepts no responsibility or liability for the accuracy, completeness, or reliability of the information contained herein. You should conduct a careful, independent investigation of the property and verify all information. Any reliance on this information is solely at your own risk. CBRE and the CBRE logo are service marks of CBRE, Inc. All other marks displayed on this document are the property of their respective owners, and the use of such marks does not imply any affiliation with or endorsement of CBRE. Photos herein are the property of their respective owners. Use of these images without the express written consent of the owner is prohibited.

CBRE