

University of Maryland

7761 Diamondback
Drive

Space
availability
summary

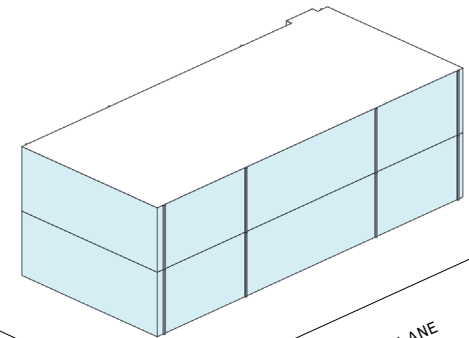
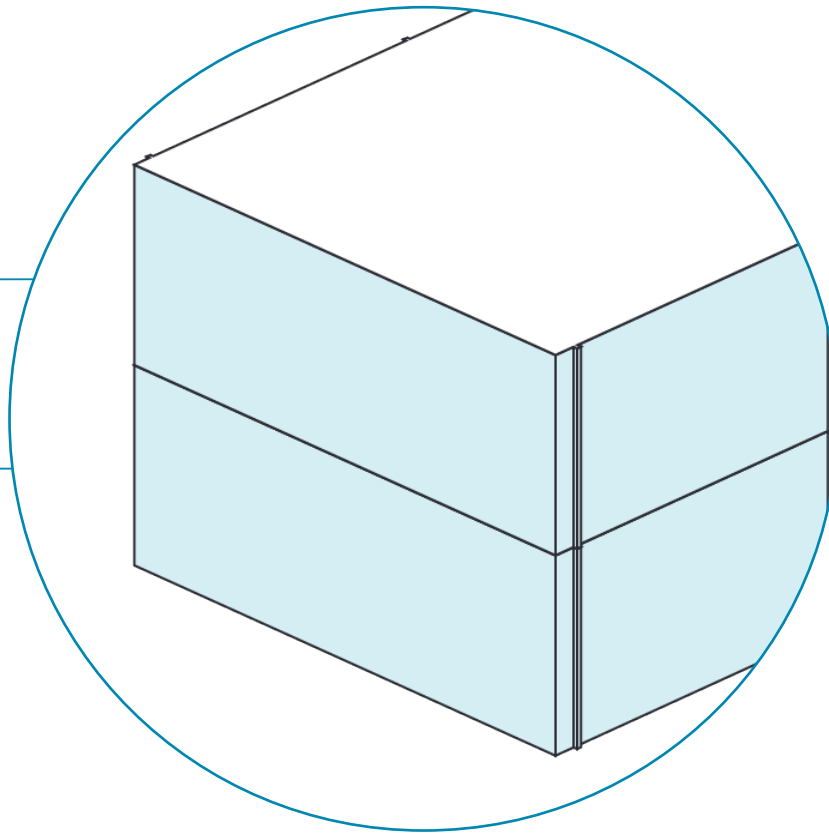
WeWork @ 7761 Diamondback Drive
College Park, MD

wework

[VIEW VIRTUAL TOUR](#)

2nd Floor 12,488 RSF

1st Floor 4,872 RSF



DIAMONDBACK DRIVE

ROSSBOROUGH LANE

17,360 RSF

TOTAL WEWORK RSF

7761 Diamondback Drive

At a glance

Workspaces designed for productivity and creativity with flexible size & term

Dedicated, private offices available from 73 to 2,185 RSF

Move-in ready offices furnished & wired

2

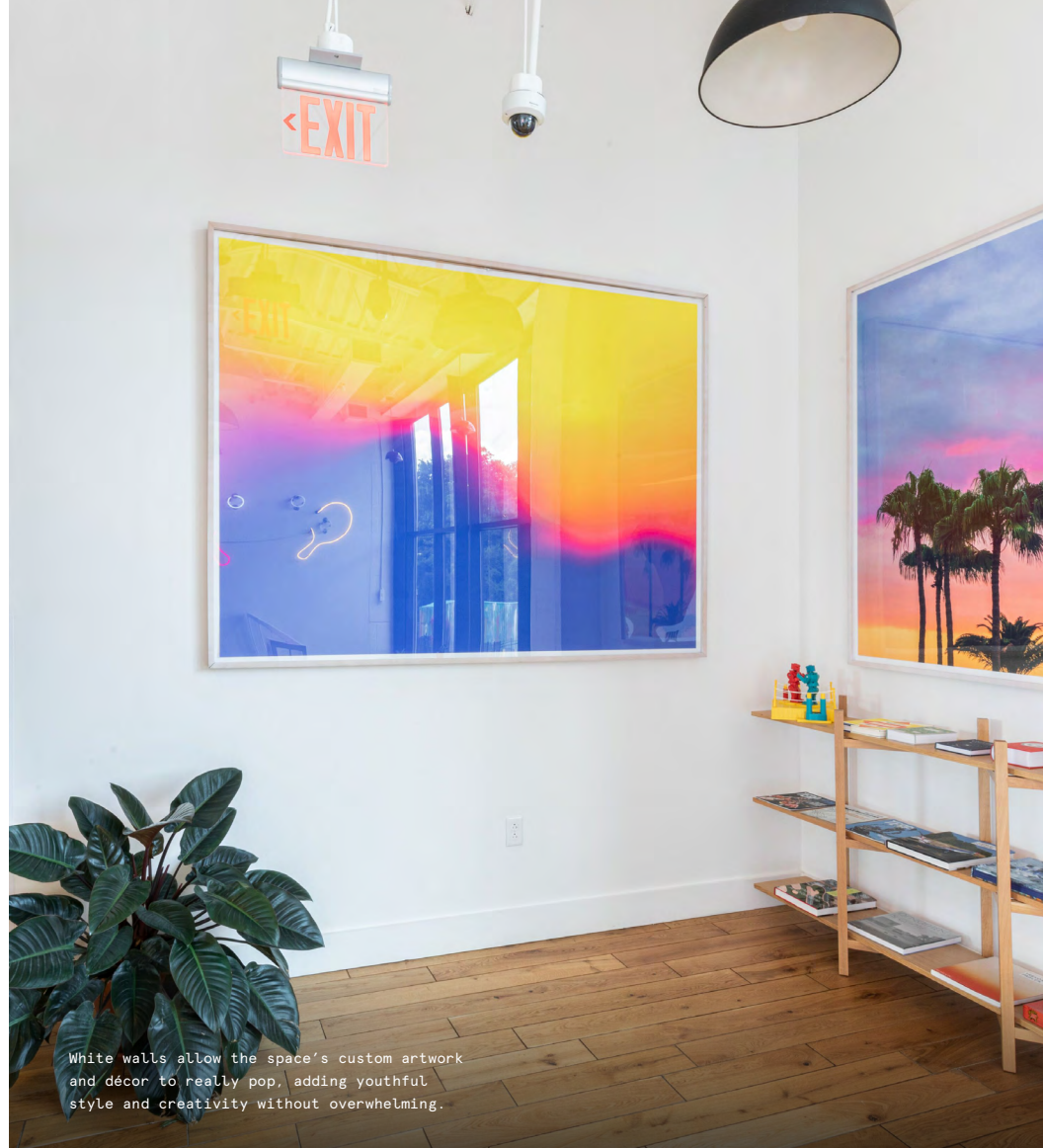
TOTAL BUILDING FLOORS

20,276

TOTAL BUILDING SQ FT



A bright color scheme, vibrant décor choices, and splashes of live greenery help bring this workspace to life.



White walls allow the space's custom artwork and décor to really pop, adding youthful style and creativity without overwhelming.

Fresh, fun workspace in the heart of College Park

7761 Diamond Drive is a state-of-the-art building located right on the University of Maryland's campus. Opened in 2018, this elegant yet irreverent space features a mix of sleek private offices, art-filled lounges, and modern meeting rooms. With bold, graphic décor, contemporary design, and a wide-open floorplate, this space is sure to inspire creativity, productivity, and collaboration. On-site parking and electric vehicle parking stations allow stress-free travel. All this, conveniently located within two miles of the Washington, DC line.



Our eclectic design approach carries into every corner of the space.



This live green wall features a bold neon installation, paying homage to the University of Maryland Terrapins.

Dynamic depth, color, and design

7761 Diamondback Drive's design aesthetic perfectly captures the energy and exuberance of its surrounding neighborhood. With bright colors, graphic patterns, and an elevated yet playful feel, this modern workspace is bursting with creative potential and productivity at every angle.

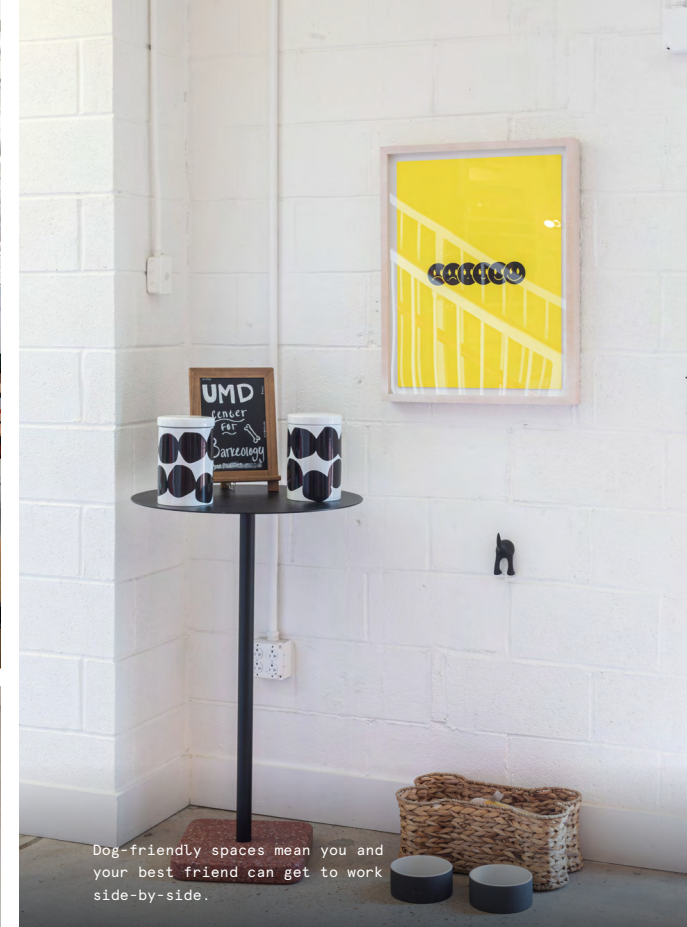
- The white walls allow vibrant artwork, décor, and splashes of bold color to truly pop
- Warmth and materiality serve as key design elements, with golden wood, terrazzo stone, ceramic tile, and natural fiber rugs throughout the space
- An open ceiling, glass block wall, and abundant natural light give common areas a wide-open feel



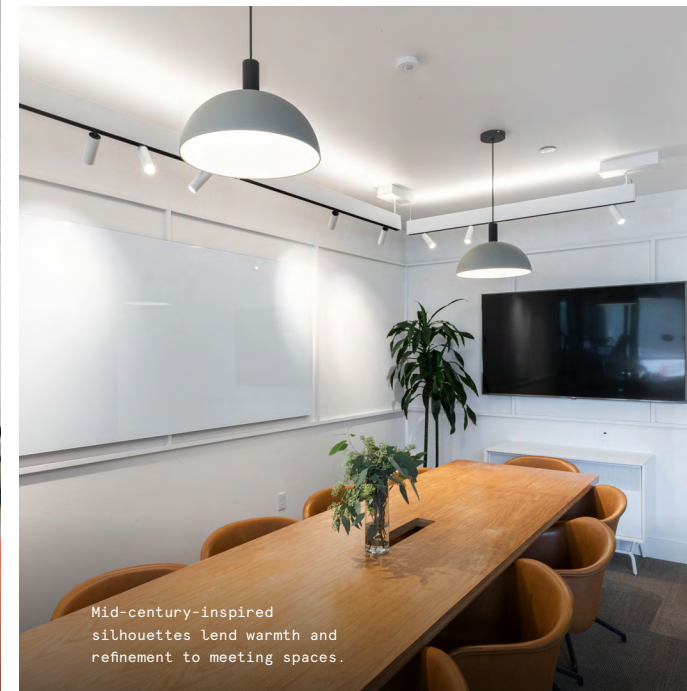
Warm wooden desktops and oversized windows give this workspace a fresh, inviting feel.



Floor-to-ceiling windows, whitewashed brick walls, and high ceilings bring industrial-chic appeal.



Dog-friendly spaces mean you and your best friend can get to work side-by-side.



Mid-century-inspired silhouettes lend warmth and refinement to meeting spaces.



A Community Desk with warm wood paneling and custom graphic artworks welcomes members and guests into this vibrant workspace.



White tiling, high-top seating, and modern pendant lighting are featured in this café-inspired kitchenette.

On-site amenities

- Electronic keycard access
- Web-based visitor access
- Business-class printers
- Stocked pantry
- US mail drop
- On-site staff
- Meeting rooms
- Phone booths
- Gender-neutral restrooms
- Outdoor space
- Dog-friendly spaces
- Bicycle storage
- On-site parking
- Access to car charging stations

Building specifications



Hours of operation

Monday - Friday: 8am-5pm



Security

CCTV monitoring

Electronic keycard access



HVAC

24/7



Building history

Built in 1957

Renovated in 2018



Ceiling heights

1st floor: 11 feet slab-to-slab

2nd floor: 14 feet slab-to-slab



Fire strategy

Fully-sprinklered floors



Building size

2 stories
20,000 SF



Elevators






1 passenger elevator

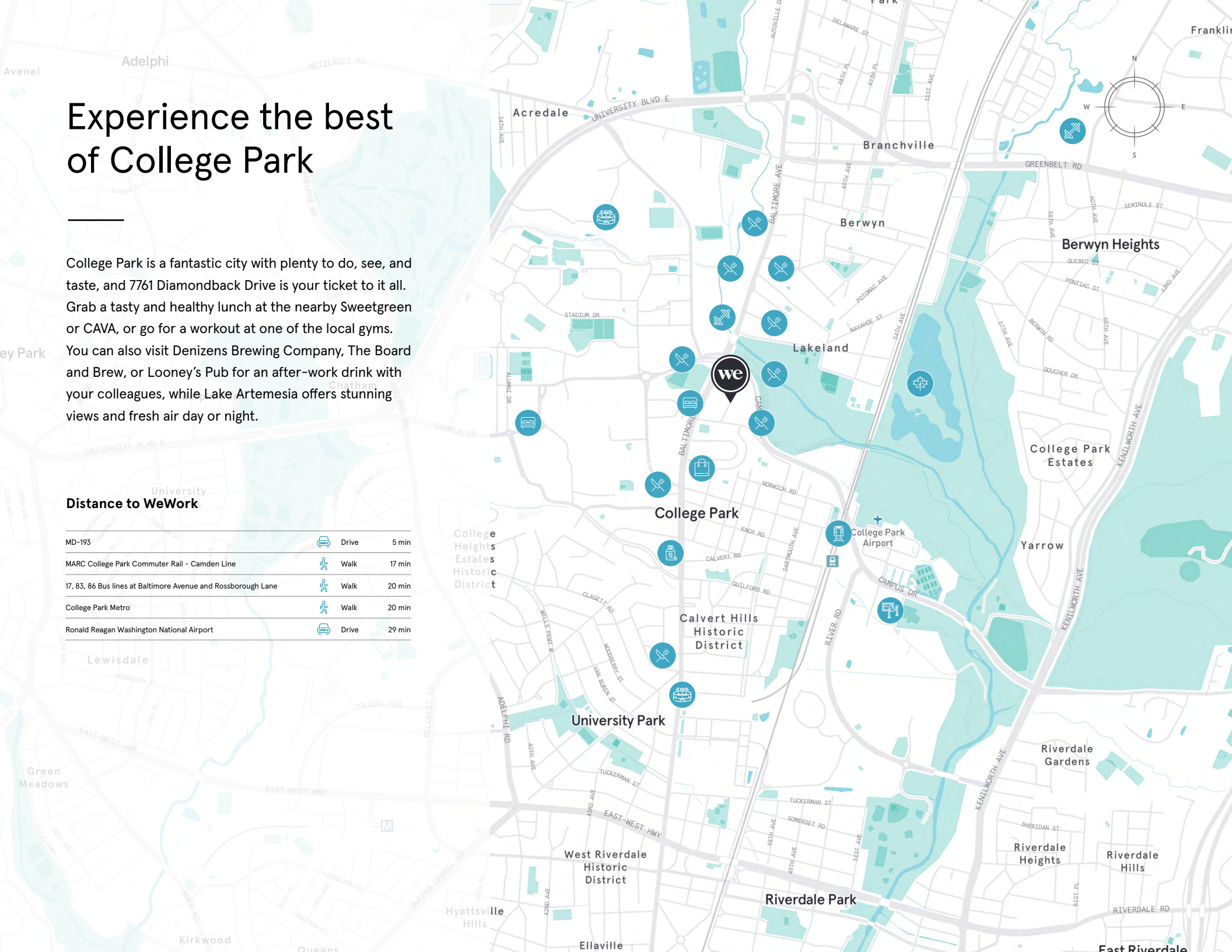
Experience the best of College Park

College Park is a fantastic city with plenty to do, see, and taste, and 7761 Diamondback Drive is your ticket to it all. Grab a tasty and healthy lunch at the nearby Sweetgreen or CAVA, or go for a workout at one of the local gyms.

You can also visit Denizens Brewing Company, The Board and Brew, or Looney's Pub for an after-work drink with your colleagues, while Lake Artemesia offers stunning views and fresh air day or night.

Distance to WeWork

MD-193	 Drive	5 min
MARC College Park Commuter Rail - Camden Line	 Walk	17 min
17, 83, 86 Bus lines at Baltimore Avenue and Rossborough Lane	 Walk	20 min
College Park Metro	 Walk	20 min
Ronald Reagan Washington National Airport	 Drive	29 min



1st Floor

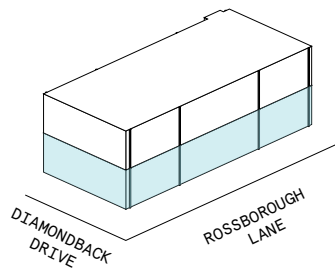
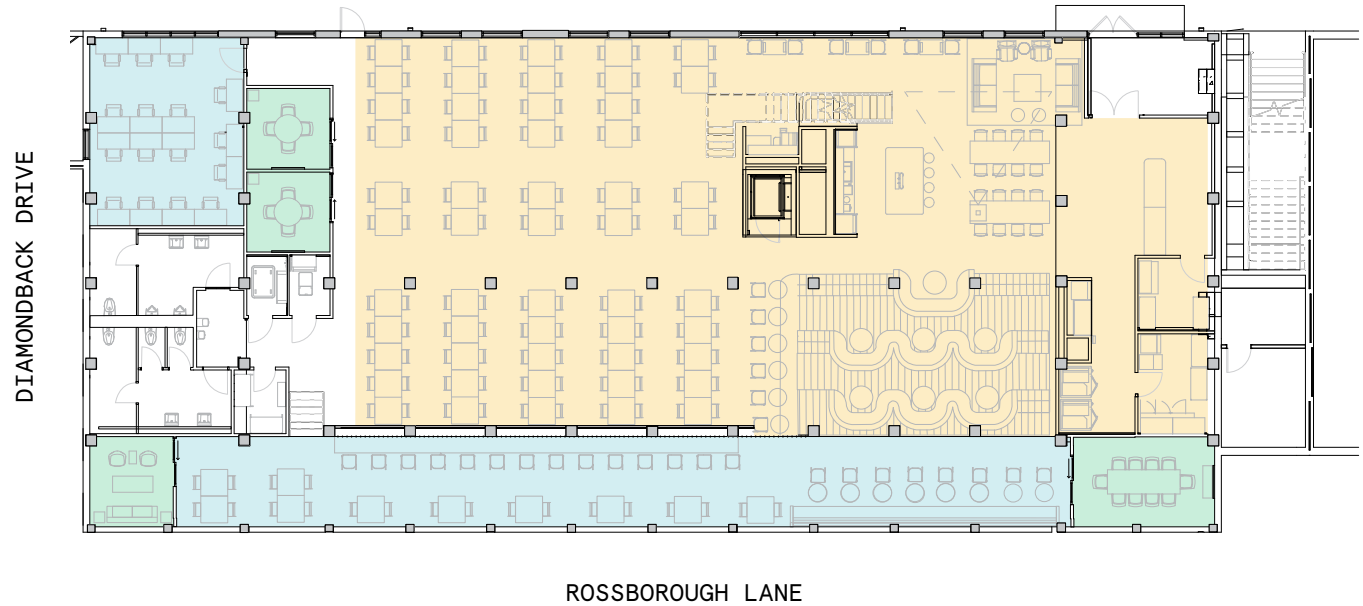
4,872 RSF



- 4 MEETING ROOM(S)
- 2 SHARED WORKSPACE(S)

LEGEND

- MEETING ROOM
- SHARED WORKSPACE
- DEDICATED SPACE



2nd Floor

12,488 RSF

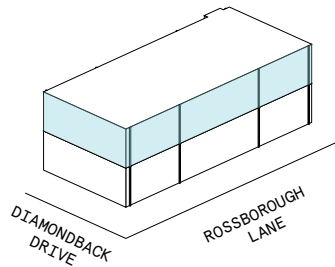


2
MEETING ROOM(S)

4
SHARED WORKSPACE(S)

LEGEND

- MEETING ROOM
- SHARED WORKSPACE
- DEDICATED SPACE



Contact

For leasing inquiries please reach out to our team.



Dave Belford

SENIOR LEASING DIRECTOR
DAVE.BELFORD@WEWORK.COM
240.601.2991

David Constance

SENIOR LEASING MANAGER
DAVID.CONSTANCE@WEWORK.COM
571.402.5491