

2510 VALENTINE AVENUE

RIGHT OFF OF FORDHAM ROAD | FORDHAM HEIGHTS



32,013 SF COMMUNITY FACILITY SPACE FOR LEASE

CONCEPTUAL RENDERING

2510 VALENTINE AVENUE

RIGHT OFF OF FORDHAM ROAD | FORDHAM HEIGHTS

PROPERTY DETAILS

SIZE: 11,449 SF Fourth Floor
9,623 SF Fifth Floor
9,623 SF Sixth Floor
1,318 SF Rooftop Space

FRONTAGE: 128'

CEILING HEIGHT: 10' (each floor)

POSSESSION: Q1 2027

TRANSPORTATION: 

HIGHLIGHTS

- Brand new Development right off of Fordham Road
- Excellent foot and vehicular traffic year-round
- Strong neighborhood demographics with a dense residential base
- Convenient access to the D train, multiple MTA bus lines, and major roadways
- Surrounded by national and local retailers
- Ideal uses:
National retailers, Fitness, Medical, Schools, supermarkets & many more!
- Neighboring tenants:
Applebee's, Target, Marshalls, JD Sport, Five Below, GAP, Chick-fil-A, Burlington, The Children's Place, Wingstop, Bank of America, Planet Fitness, Snipes, & many more!

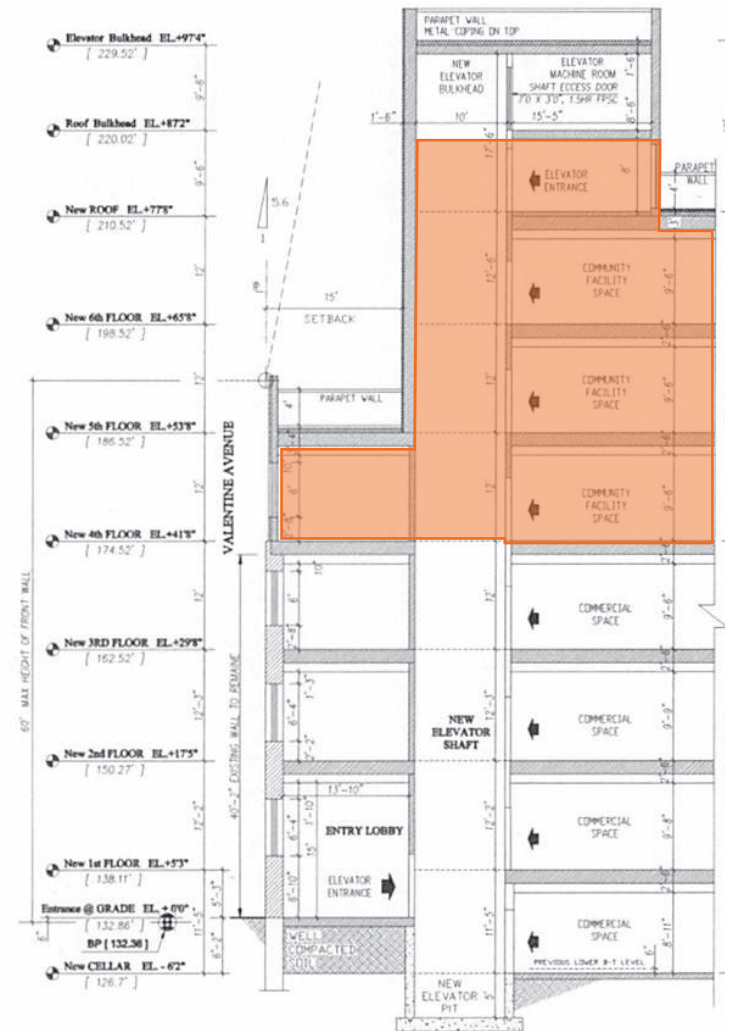
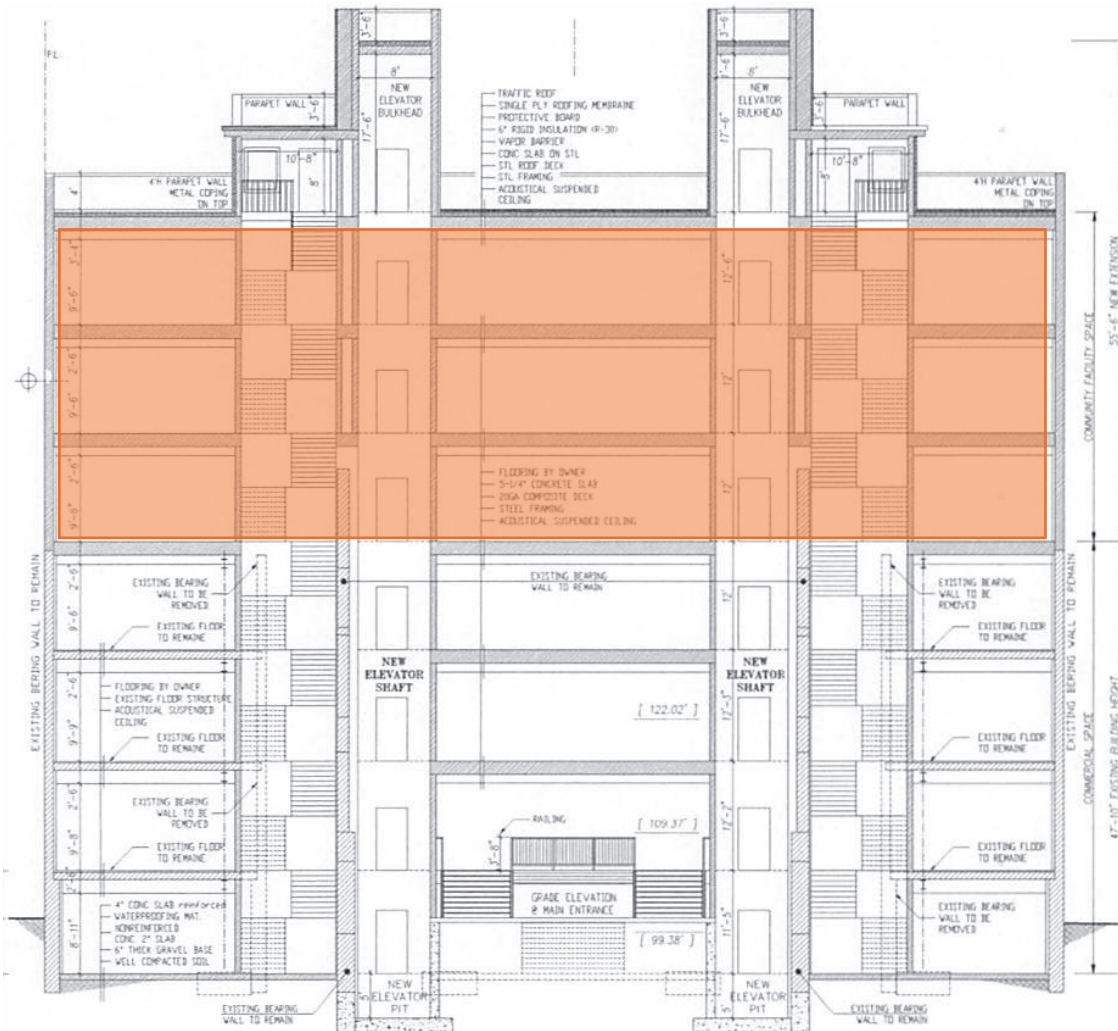


All information supplied in this marketing presentation and/or flyer is from sources deemed reliable and is furnished subject to errors, omissions, modifications, removal of listings from sale/lease and to any listing condition. Any square footage, dimensions, floor plans and/or technical data set forth are approximations and are subject to further elaboration/confirmation.

2510 VALENTINE AVENUE

RIGHT OFF OF FORDHAM ROAD | FORDHAM HEIGHTS

PROPOSED BUILDING PLAN:
TOTAL COMMUNITY FACILITY SF - 32,013 SF



2510 VALENTINE AVENUE

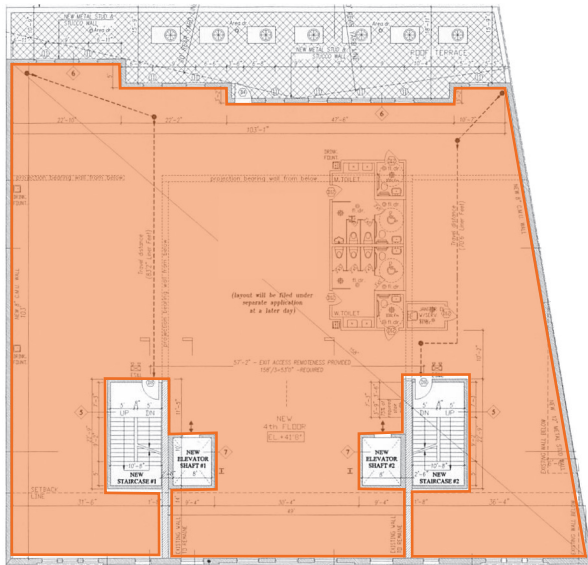
RIGHT OFF OF FORDHAM ROAD | FORDHAM HEIGHTS

FLOOR PLANS (COMMUNITY FACILITY):

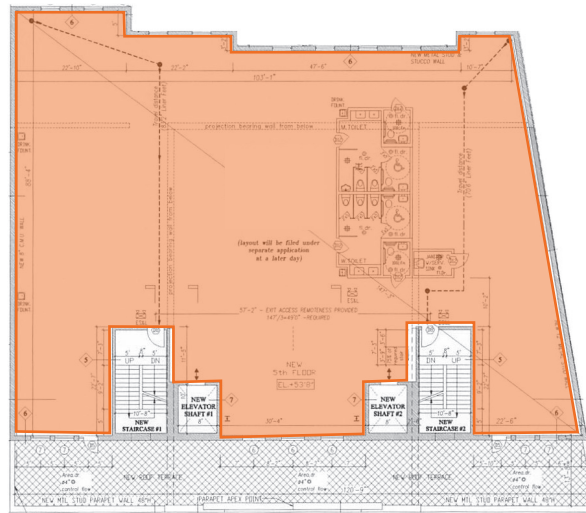
FOURTH FLOOR - 11,449 SF

FIFTH FLOOR - 9,623 SF

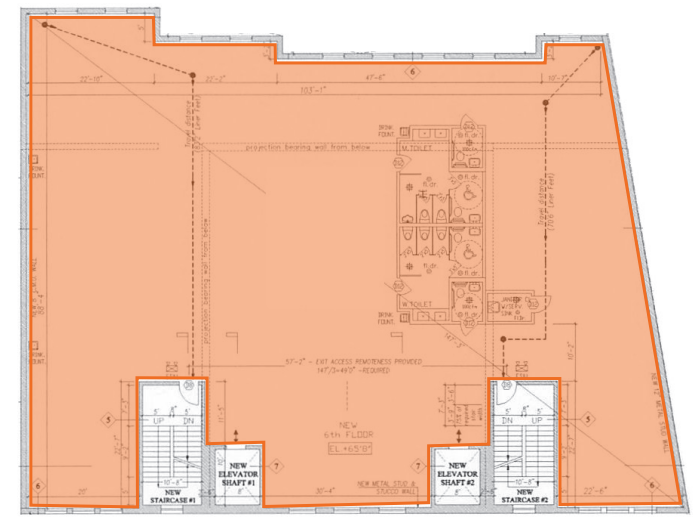
SIXTH FLOOR - 9,623 SF



FOURTH FLOOR



FIFTH FLOOR



SIXTH FLOOR

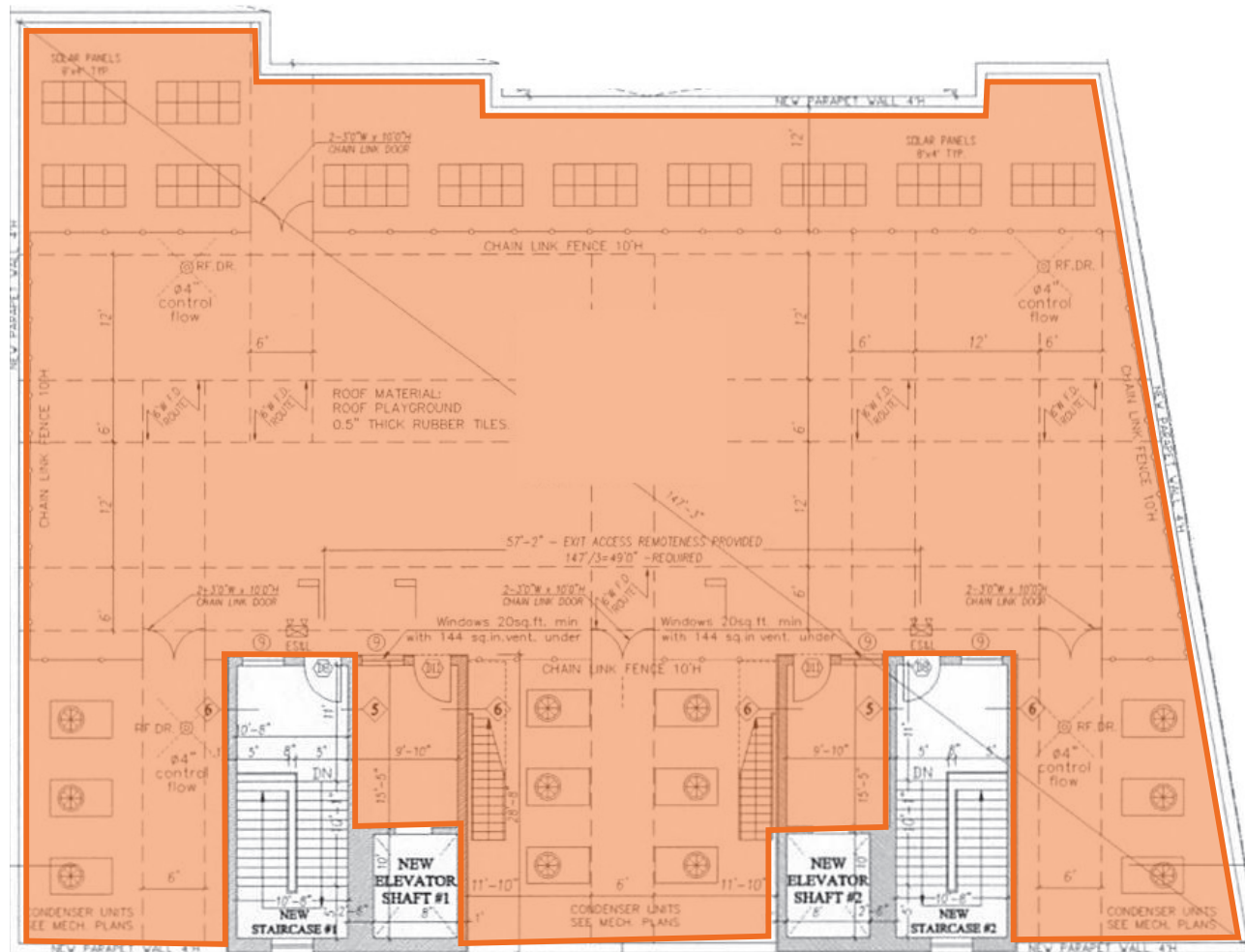


2510 VALENTINE AVENUE

RIGHT OFF OF FORDHAM ROAD | FORDHAM HEIGHTS

FLOOR PLANS:

ROOFTOP - 1,318 SF



2510 VALENTINE AVENUE

RIGHT OFF OF FORDHAM ROAD | FORDHAM HEIGHTS

FOR MORE INFORMATION,
PLEASE CONTACT:

JOEY LEVY

347.579.9883 | JLevy@ksrny.com

FREDDY SOUID

917.968.0329 | FSouid@ksrny.com

JACK HAMADANI

718.415.0095 | JHamadani@ksrny.com

