

REVISIONS	BY
1-10-02	VRW

GARY L. McDONALD, Architect
 Florida License AR0014951
 3161 St. Johns Bluff Road, Suite 2
 Jacksonville, Florida 32246
 (904) 996-1466 Fax (904) 996-1465

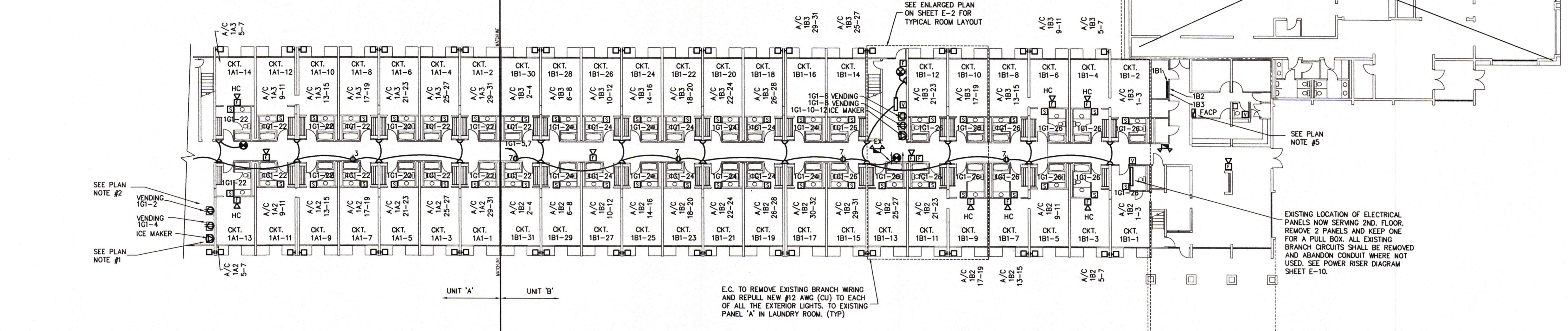
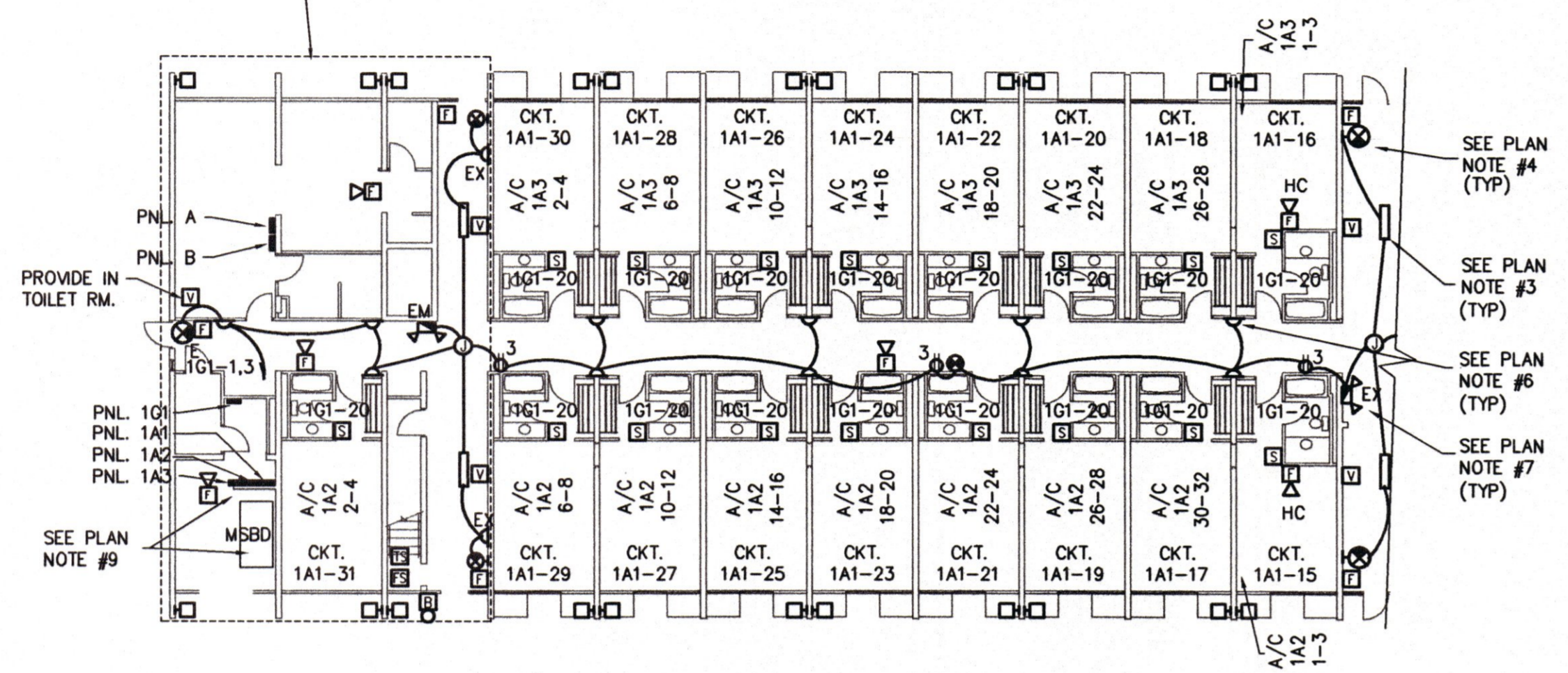
ALTERATIONS AND ADDITIONS TO THE DAYS INN
 For NEMESIS HOTEL MANAGEMENT, LLC
 1401 ATLANTIC BLVD., JACKSONVILLE, FLORIDA 32266

DRAWN	VRW
CHECKED	TCN
DATE	10-1-01
SCALE	AS NOTED
JOB NO.	
SHEET	E-4

PLAN NOTES

1. REPLACE EXISTING 208V-1Ø RECEPTACLE W/ NEW NEMA 6-3ØR. REMOVE EXISTING CONDUCTORS, REUSE EXISTING RACEWAY WHERE APPLICABLE OR PROVIDE NEW CONDUIT PER NEC. PROVIDE NEW #10 AWG (CU) BACK TO EXISTING PANEL 'B' AND CONNECT TO EXISTING 2 POLE 3Ø AMP CIRCUIT BREAKER.
2. REPLACE EXISTING 120 VOLT RECEPTACLE W/ NEW NEMA 5-2ØR. REMOVE EXISTING CONDUCTORS AND REUSE EXISTING RACEWAY WHERE APPLICABLE OR PROVIDE NEW CONDUIT WHERE REQUIRED AND REROUTE CKT. TO NEW PANEL 1Ø1. EACH VENDING MACHINE SHALL HAVE IT'S OWN CIRCUIT.
3. REPLACE EXISTING FLUORESCENT W/ NEW WRAPAROUND FLUORESCENT. (2) T8 LAMPS AND ENERGY SAVING BALLAST. TYPICAL FOR REPLACEMENTS OF ANY SURFACE MTD. FLUORESCENT LIGHT FIXTURE. (METALUX #WE232-A-120V-LEOCB). REMOVE EXISTING CONDUCTORS AND REPLACE W/ NEW #12 AWG (CU) FOR EACH BRANCH CIRCUIT. REUSE EXISTING RACEWAY WHERE APPLICABLE OR PROVIDE CONDUIT PER NEC.
4. REPLACE EXISTING EXIT LIGHT FIXTURE W/ NEW LED LAMPS AND BATTERY BACK UP TYPE FIXTURE. (SURE-LITE #LPX-6-0-G-WH-120V). REMOVE EXISTING CONDUCTORS PROVIDE NEW #12 AWG (CU) UNSWITCHED CONDUCTORS TO CORRIDOR LTG. CIRCUIT.
5. REPLACE EXISTING FIRE ALARM PANEL W/ NEW ADDRESSABLE TYPE. ALL FIRE ALARM DEVICES ARE TO BE NEW DO NOT USE ANY OF EXISTING DEVICES.
6. PROVIDE NEW WALL SCONCES W/ 2-26W TC-D 4 PIN LAMPS AND W/ OPAL ACRYLIC LENS AND ELECTRONIC BALLAST, W/ DUST COVER AND MEETS ADA REQUIREMENTS. MOUNT 6 FEET TO CENTER LINE OF FIXTURE. (BETA-CALCO-15-1913-120V-WH-OC)
7. PROVIDE NEW EMERGENCY BATTERY PACK W/ TWIN HEADS, MOUNT ON WALL TIGHT TO CEILING. (SURE-LITE CU-1-120V) CONNECT TO CORRIDOR LIGHTING CIRCUIT.(TYPICAL)
8. GENERAL NOTE TO MENTIONED. ALL EXISTING CONDUCTORS ARE TO BE REMOVED FROM THE BUILDING (BRANCH CIRCUITS AND FEEDERS) PROVIDE NEW AWG COPPER ONLY. RATING AS REQUIRED PER CIRCUITS AND NEC AND NFPA.
9. SEE POWER RISER DIAGRAM SHEET E-9

SEE ENLARGED FLOOR PLAN SHEET E-3



E.C. TO REMOVE EXISTING BRANCH WIRING AND REPLY NEW #12 AWG (CU) TO EACH OF ALL THE EXTERIOR LIGHTS. TO EXISTING PANEL 'A' IN LAUNDRY ROOM. (TYP)

1 FIRST FLOOR PLAN
 E-4 SCALE: 1/16" = 1'-0"



FOR CONTINUATION SEE DRAWINGS E-10, E-11, AND E-12

John S. ...
 11/2/02

McVeigh & Mangum Engineering, Inc.
 9650 Cypress Green Dr., Suite 202
 Jacksonville, Florida 32256
 Ph: (904) 737-0701 Fax: (904) 636-6770
 EB 6330 email: mail@McVeighMangum.com