



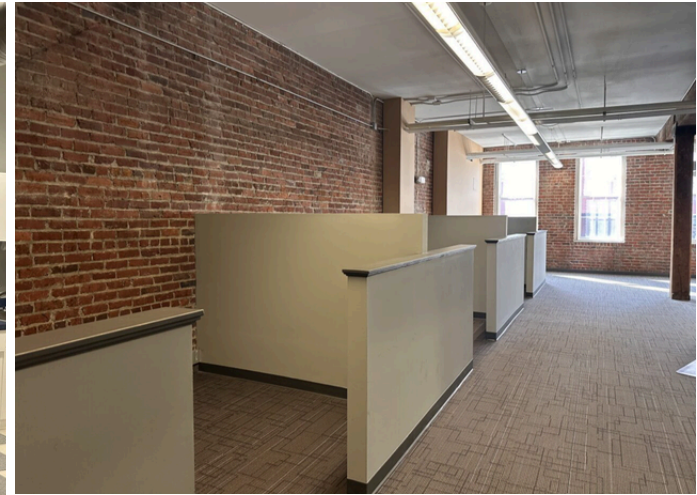
For Lease | 1329 E Cary Street, Richmond, VA



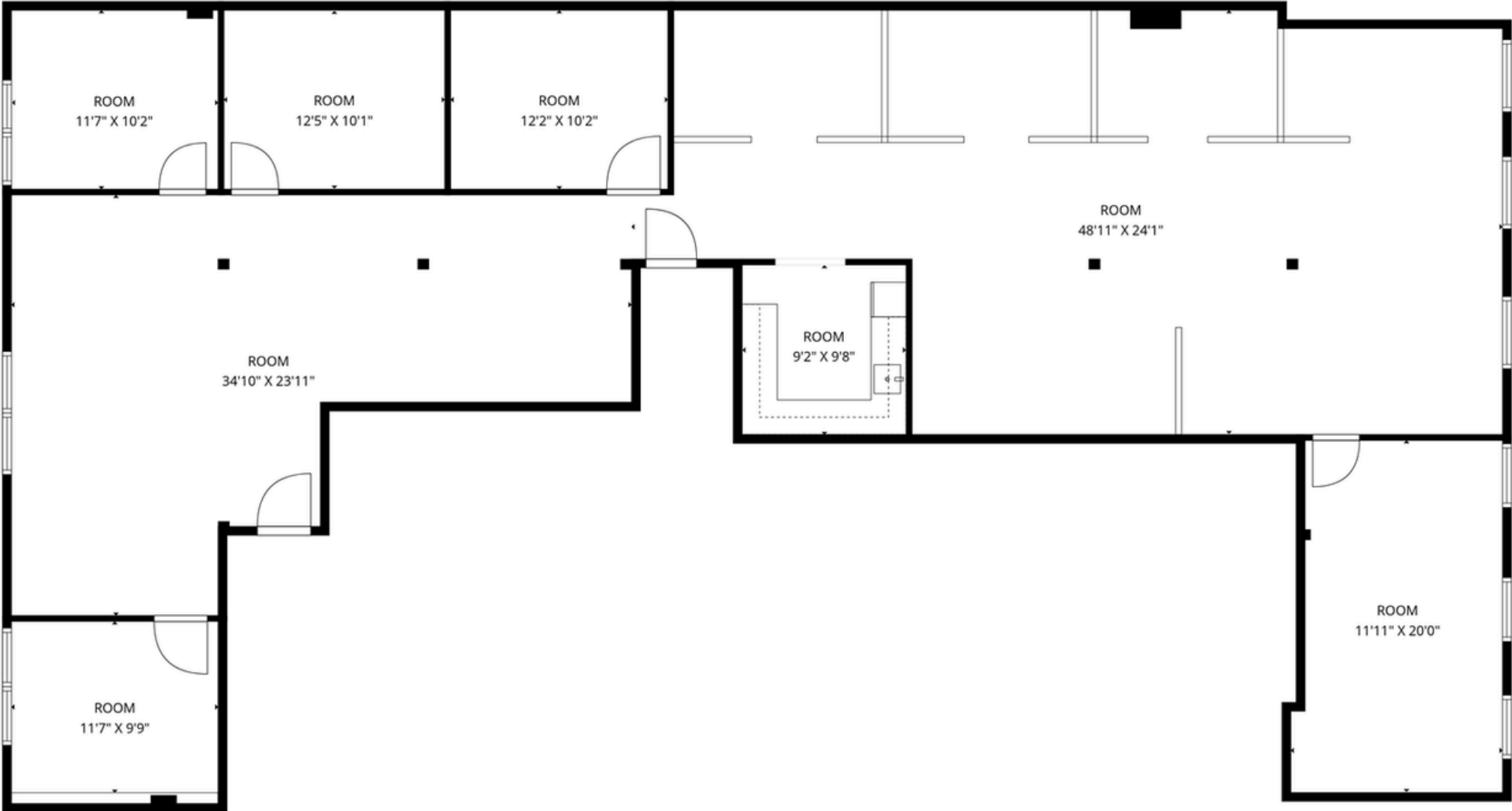
1329 E. CARY STREET

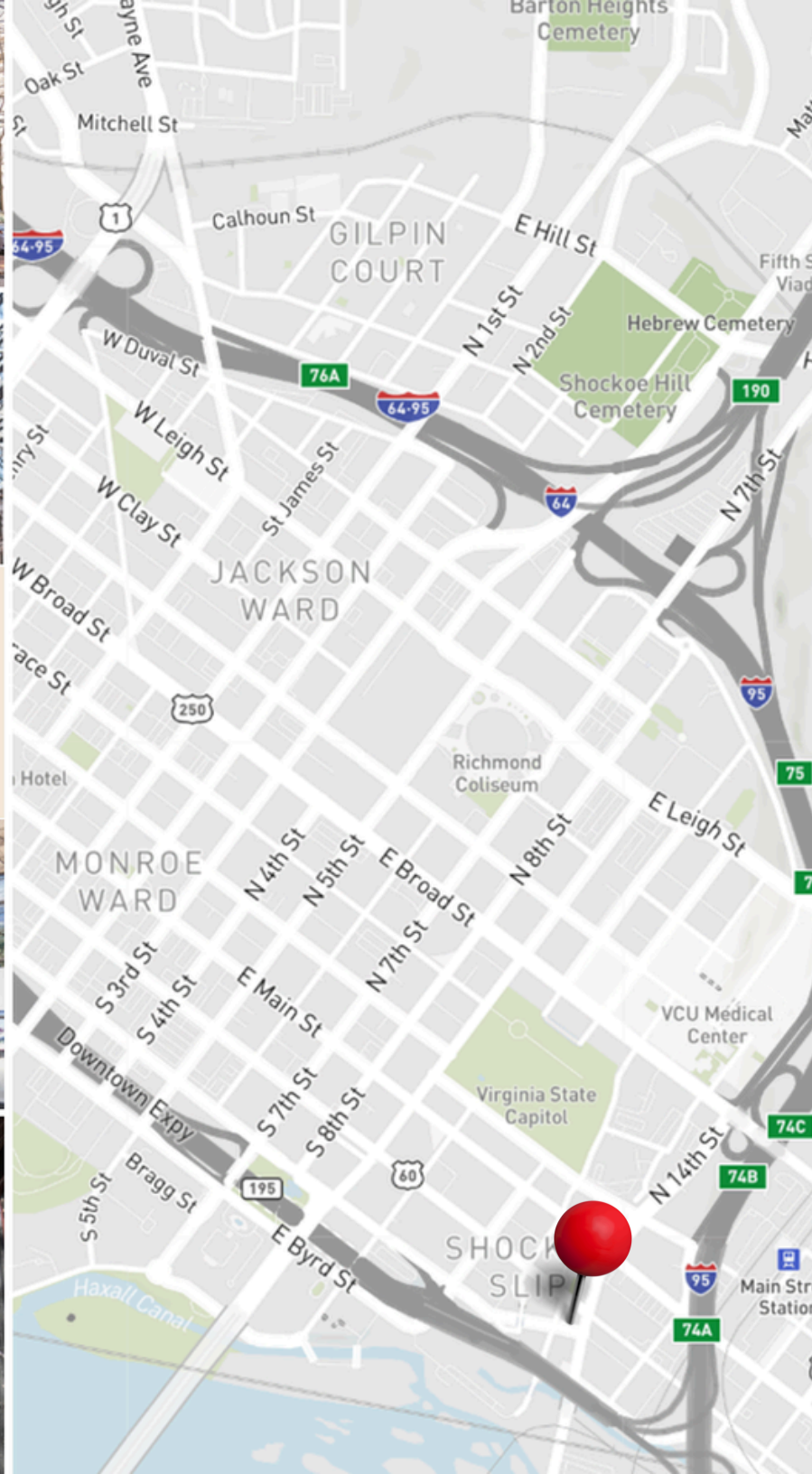
Property Highlights

- 3,174 SF available on the 2nd floor
- High exposed ceilings with ample natural light
- Exterior signage available
- Off-street parking available
- Walkable to a variety of nearby restaurants, retail shops, hotels, cultural landmarks, and Richmond's Canal Walk
- Easy transit accessibility



2nd Floor | Suite 200: 3,174 SF





WELCOME TO THE NEIGHBORHOOD!



Chopt

Chick-fil-A

The Pit & The Peel

Omni Hotel

Native Plate

Urban Farmhouse Market & Cafe

Soul Taco

The Tobacco Company

Mom's Siam 2

Residence Inn by Marriott

Europa Crust

Jimmy John's

Sine Irish Pub

1329 E CARY STREET

Southern Railway Taphouse

The Hard Shell

Canal Walk



SEE A BRIGHTER WAY



THE MAN WITH SQUARE FEET

CELEBRATING 40 YEARS WITH 70 MILLION SQ. FT.

New Media Systems, Inc.
904.359.3620
www.newmediasystems.net



Kaylin Farruggio

kaylin.farruggio@jll.com

+1 (804) 802 6125

jll.com

John Jay Schwartz MCR, RPS, IBC

jjschwartz@havesitewilltravel.com

+1 (804) 350 1866

TheManwithSquareFeet.com

Jones Lang LaSalle Americas, Inc.