

RETAIL / MEDICAL FOR LEASE

ONE
PARK
SQUARE



3470 NW 82ND AVENUE, DORAL 33122



ONE
PARK
SQUARE

SEEKING COMPLEMENTARY MEDICAL OFFICES

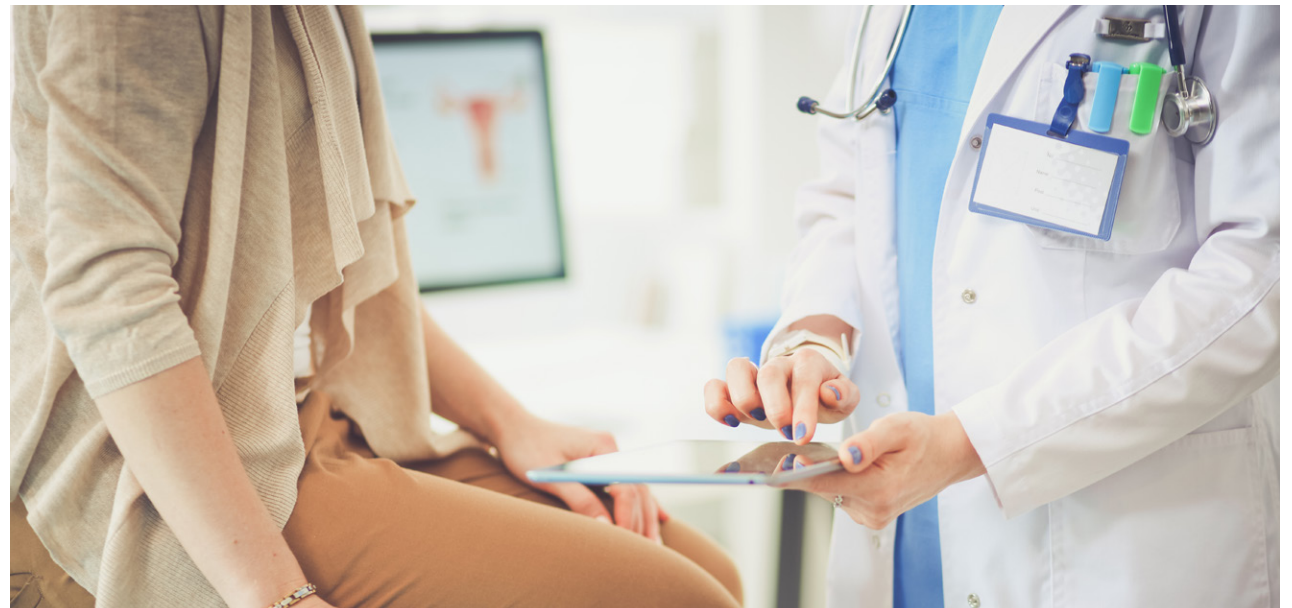


Perfect for the following medical practices:

- Pediatrician
- Urologist
- Podiatrist
- Orthopedist
- Rehab / Physical Therapy
- Orthodontist

Existing medical practices and complimentary tenants:

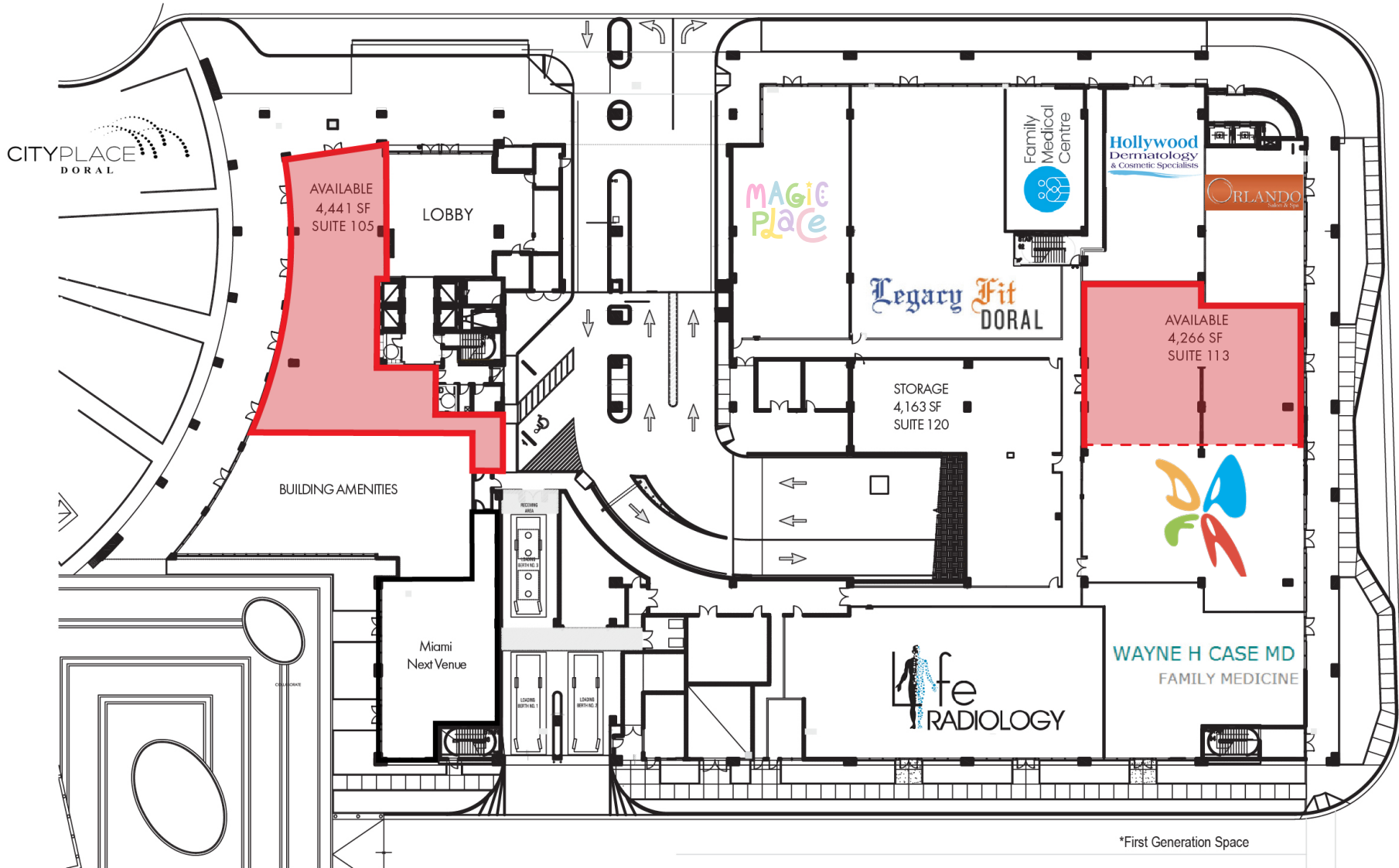
- Diagnostic Center
- Family Medicine
- Dermatology
- Fitness Center



ONE PARK SQUARE

SITE PLAN

NW 35 STREET



NW 82 AVENUE

*First Generation Space

ONE PARK SQUARE

PROPERTY HIGHLIGHTS

- +/- 4,266 SF available
- +/- 4,441 SF 2nd generation restaurant space available
- At the base of an 11-story, +/-281,785-SF Class A office building
- 6-story integrated parking garage
- Adjacent to CityPlace Doral
- Complementary employee, patient and valet parking
- Excellent location in Doral, minutes from the Dolphin Expressway (SR-836), the Palmetto Expressway (SR-826), Florida's Turnpike, and Miami International Airport



ONE
PARK
SQUARE

OVERVIEW

NW 87TH AVE.

CITYPLACE
DORAL

THE MANOR
CITYPLACE DORAL

Oasis
PARK SQUARE
AT DORAL

NW 36TH ST.

ONE
PARK
SQUARE

NW 33RD ST.

NW 82ND AVE.



FOR MORE INFORMATION
PLEASE CONTACT:

ZACH WINKLER
+1 305 704 1333
zach.winkler@am.jll.com

Lic. Real Estate Brokers

**ONE
PARK
SQUARE**

