



BRIGHTSTAR GROUP

Investment | Development | Management

FULTON
MARKET

CHICAGO, IL

1200 W Lake Street

PREMIER RETAIL / SHOWROOM OPPORTUNITY

FULTON MARKET | CHICAGO, ILLINOIS



5,500 SF
AVAILABLE



\$68.50/SF/YR
ASKING RENT



LAKE + RACINE
HARD CORNER RETAIL



LEASING INQUIRIES

CAMERON MILLER

847-809-2347

cam@brightstar-grp.com



Property Overview

RETAIL / SHOWROOM OPPORTUNITY

1200 W Lake Street offers a 5,500 SF retail opportunity at the hard corner of Lake Street and Racine Avenue in the heart of Fulton Market. The space combines oversized storefront windows, strong street presence, and immediate access to one of Chicago's most active mixed-use neighborhoods.

The interior features an expansive open showroom floor with exposed brick, heavy timber columns and beams, polished hardwood flooring, a kitchenette, multiple restrooms, and flexible support rooms - ideal for retail, fitness, showroom, gallery, service, or experiential uses.



Space:
5,500 SF



Rental Rate:
\$68.50/SF/YR



Rent Type:
NNN



Term:
Negotiable



Availability:
Now



Build-Out:
Partial



KEY HIGHLIGHTS

- 5,500 SF available in the heart of Fulton Market
- Dramatic open layout with exposed timber structure
- Oversized storefront windows and strong natural light
- Hard corner identity at Lake Street and Racine Avenue
- Existing kitchenette, support rooms, and restrooms
- Polished hardwood flooring, exposed brick, and flexible retail shell



Location & Leasing

1200 W LAKE STREET

FULTON
MARKET

CHICAGO, IL

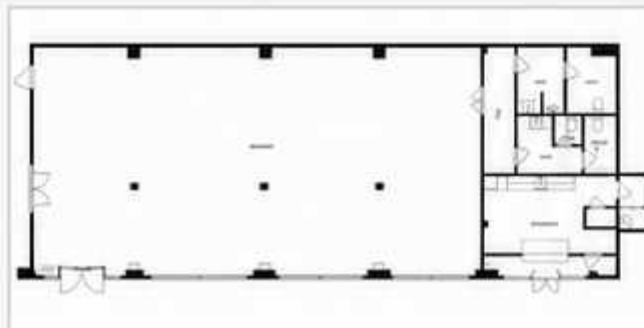


Positioned at the highly visible corner of Lake Street and Racine Avenue, 1200 W Lake offers a prominent Fulton Market retail presence with exposure to residents, office users, visitors, and CTA traffic along the Lake Street elevated tracks.

The surrounding area continues to attract restaurants, fitness users, showrooms, creative offices, hotels, residential development, and national retail concepts - ideal for a brand seeking identity and flexibility.

LOCATION ADVANTAGES

- 1 Hard corner identity at Lake and Racine
- 2 Large storefront windows and excellent visibility
- 3 Near Morgan CTA Green/Pink Line and Fulton Market dining corridor
- 4 Flexible open floor plan for retail, showroom, fitness, gallery or service uses



LEASING INFORMATION

PIN

Address:
1200 W Lake Street,
Chicago, IL 60607

USE

Use:
Retail / Showroom

BLD

Build-Out:
Partial Build-Out

NNN

Rent Type:
Triple Net (NNN)

NOW

Available:
Now

\$

Asking Rent:
\$68.50/SF/YR



BRIGHTSTAR GROUP
Investment | Development | Management

CM

Cameron Miller
847-809-2347
cam@brightstar-grp.com
Brightstar Group



LEASING INQUIRIES

CAMERON MILLER

847-809-2347

cam@brightstar-grp.com