



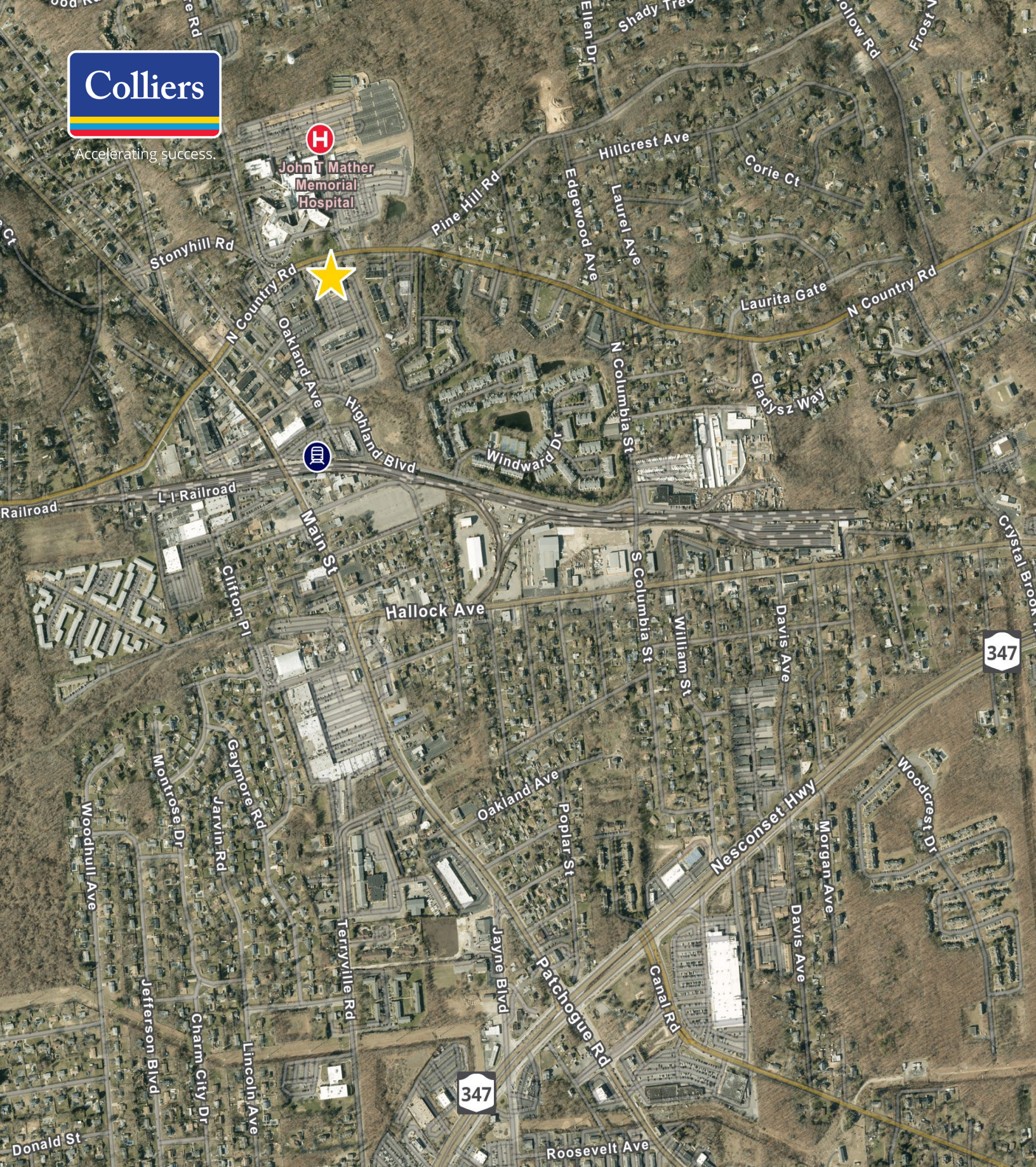
Accelerating success.

# Former Bank Branch available for sublease

68 North Country Road  
Port Jefferson



Accelerating success.



**John T Mather  
Memorial  
Hospital**



This document/email has been prepared by Colliers for advertising and general information only. Colliers makes no guarantees, representations or warranties of any kind, expressed or implied, regarding the information including, but not limited to, warranties of content, accuracy and reliability. Any interested party should undertake their own inquiries as to the accuracy of the information. Colliers excludes unequivocally all inferred or implied terms, conditions and warranties arising out of this document and excludes all liability for loss and damages arising there from. This publication is the copyrighted property of Colliers and /or its licensor(s). © 2025. All rights reserved. This communication is not intended to cause or induce breach of an existing listing agreement.

# Discover the perfect blend of convenience & accessibility

## Prime Location

Formerly a bank branch, this sublease allows for a rare opportunity to thrive in the heart of Port Jefferson. Features include:

- Drive-thru in-place
- Walking distance from Port Jefferson train station
- Minutes from Main Street & the Nesconset/Port Jefferson Highway

## Key Features

3,500 SF

Sublease through December 2029.



Asking: Upon Request



**Darren Leiderman**  
Executive Vice President  
NYS Licensed RE Broker  
+1 516 284 3434  
darren.leiderman@colliers.com

**Michael Zawol**  
Associate  
NYS Licensed RE Broker  
+1 516 284 3417  
michael.zawol@colliers.com

