



SAN FRANCISCO, CA 94103

# 1154-1158 Howard Street

FOR LEASE

**Plug & Play Flex Building**  
South of Market

**+/- 6,520 - 13,040 SF**

**TREVOR GUDIM**

Executive Vice President  
Email: [trevor@calco-sf.com](mailto:trevor@calco-sf.com)  
Cell: 858.922.2632  
DRE #01979980

**BENNETT FALONI**

Associate  
Email: [bennett@calcosf.com](mailto:bennett@calcosf.com)  
Cell: 724.678.2851  
DRE #01902075

**We're Here to Help – Reach Out Today!**

425 2nd St. Suite 450, San Francisco, CA 94107 | [info@calcosf.com](mailto:info@calcosf.com) | (415) 970-0000 | [calcosf.com](http://calcosf.com)

# PROPERTY SUMMARY

| 1154-1158 Howard St.

**AVAILABLE SPACE** | +/- 6,520 - 13,040 Square Feet

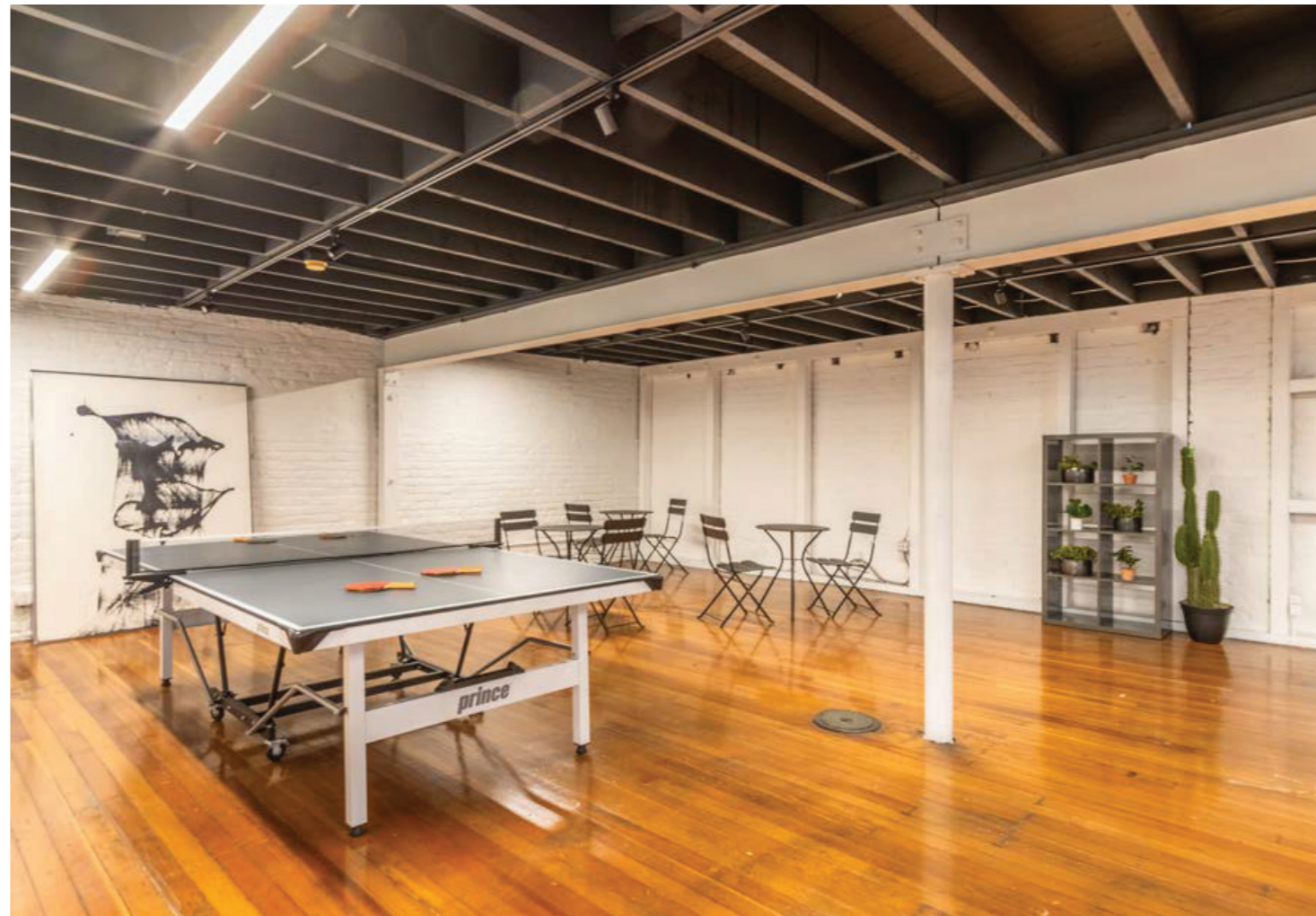
**RENTAL RATE** | \$30 / Square Foot / Year, Industrial Gross

**ZONING** | WMUG - Western Mixed Use General

**AVAILABLE** | Immediately

## BUILDING ATTRIBUTES

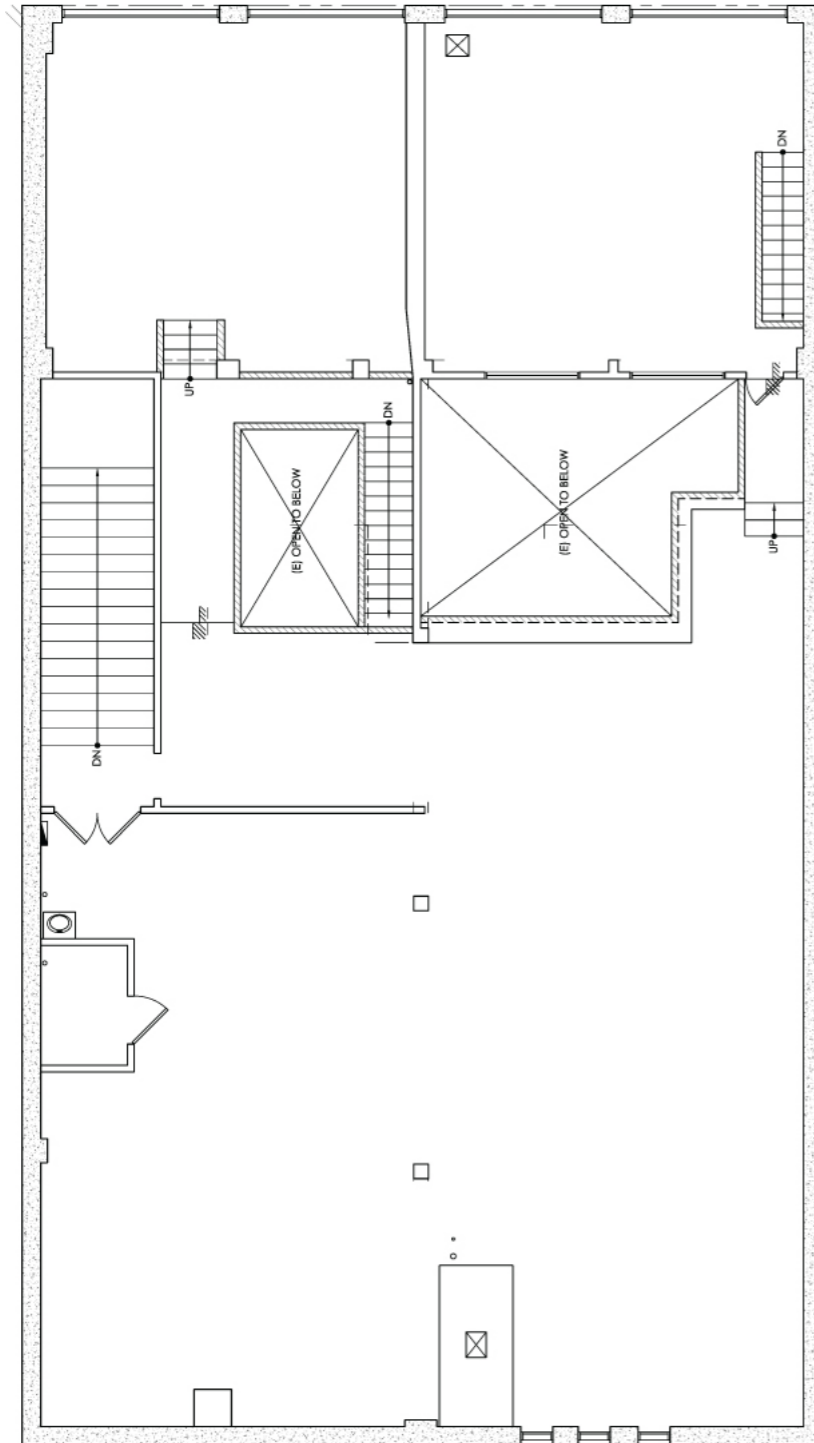
- Furnished or Unfurnished Flex Building  
Centrally Located on Howard St
- Extensively Renovated Throughout
- Two (2) Grade Level Drive-In Roll-Up Doors
- Industrial Features Support Multitude of Uses
- Two (2) Meeting Rooms
- Multiple ADA Restrooms w/ a Shower
- Abundance of Natural Light w/ Skylights  
& Large Windows



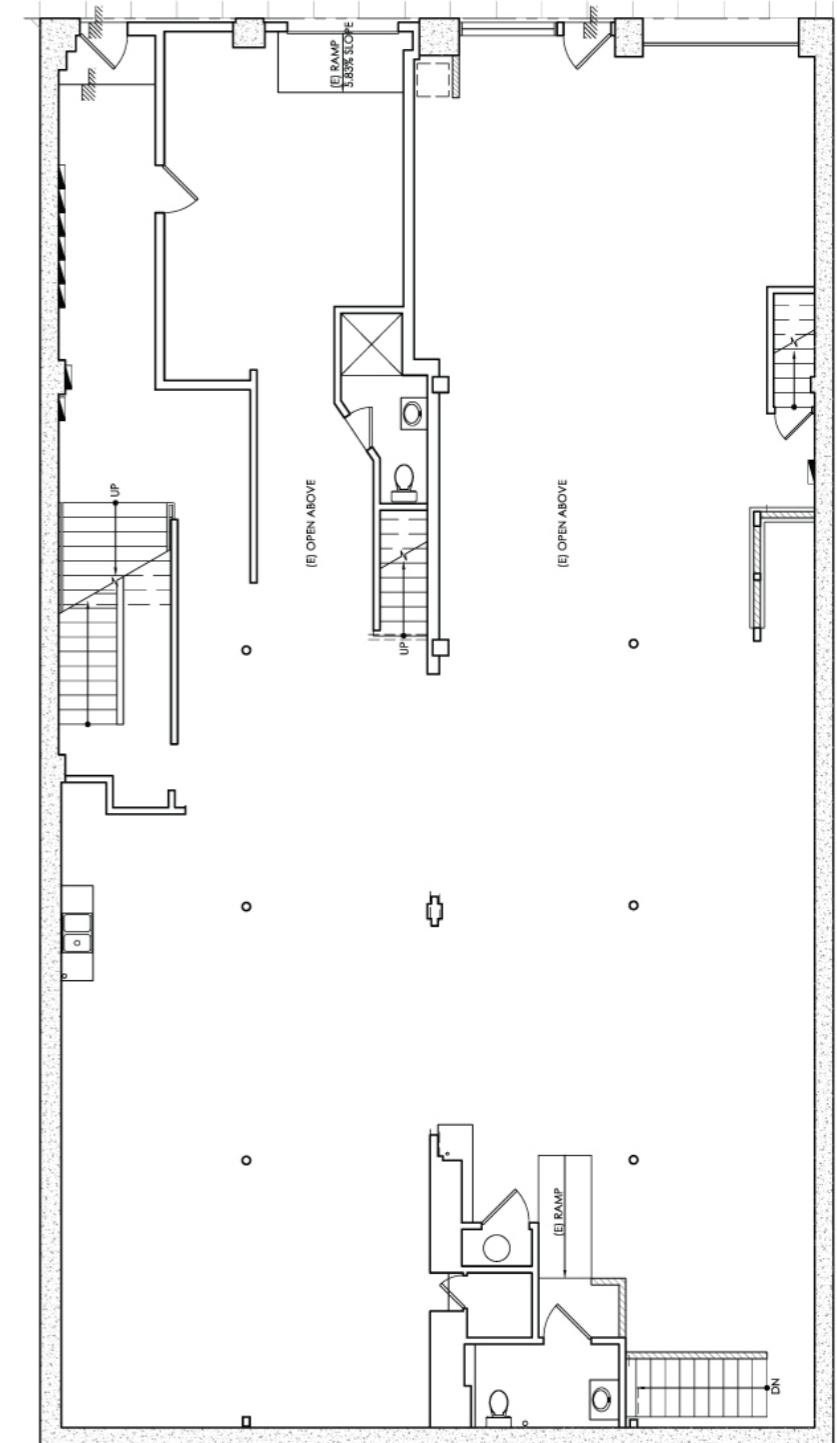
# FLOOR PLANS

| 1154-1158 Howard St.

## SECOND LEVEL



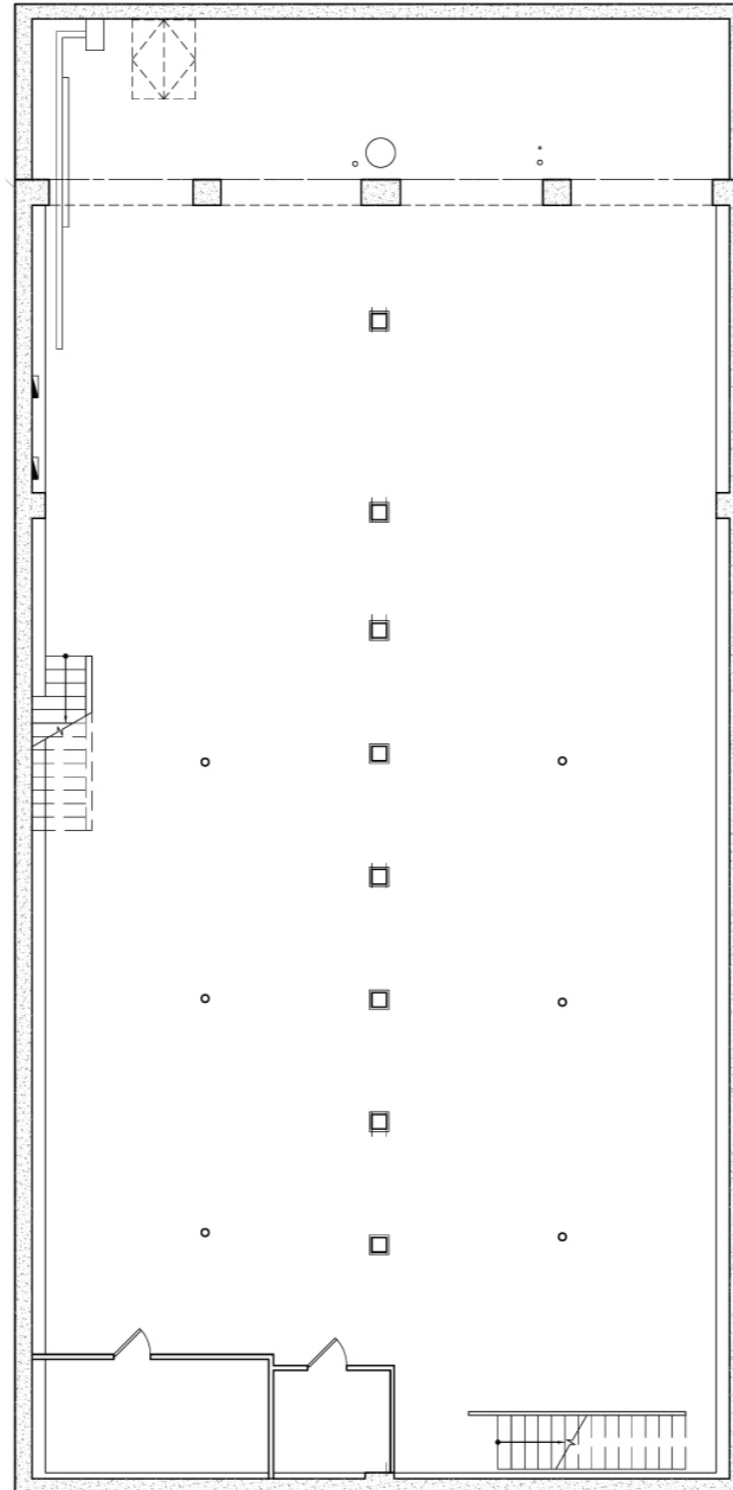
## GROUND LEVEL



# FLOOR PLANS

| 1154-1158 Howard St.

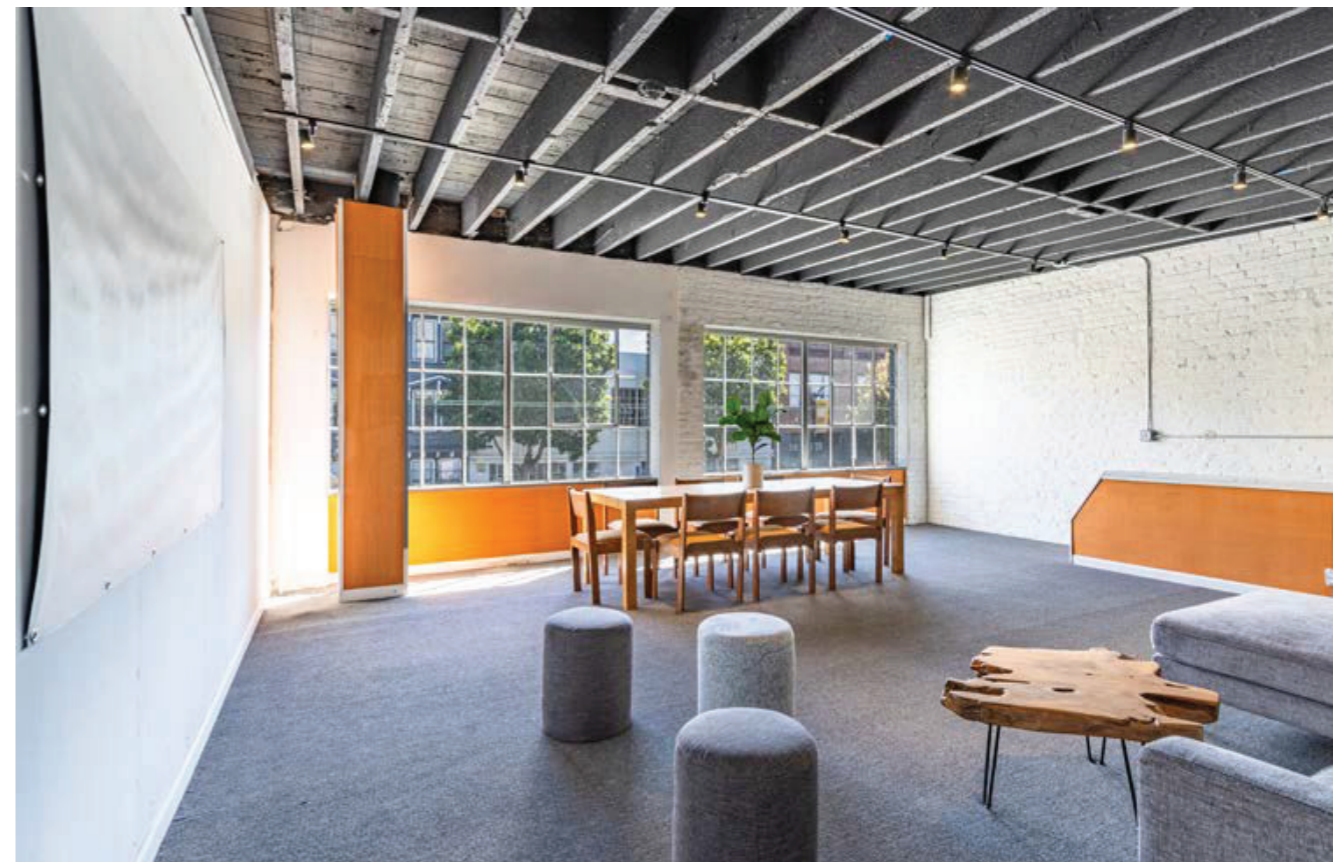
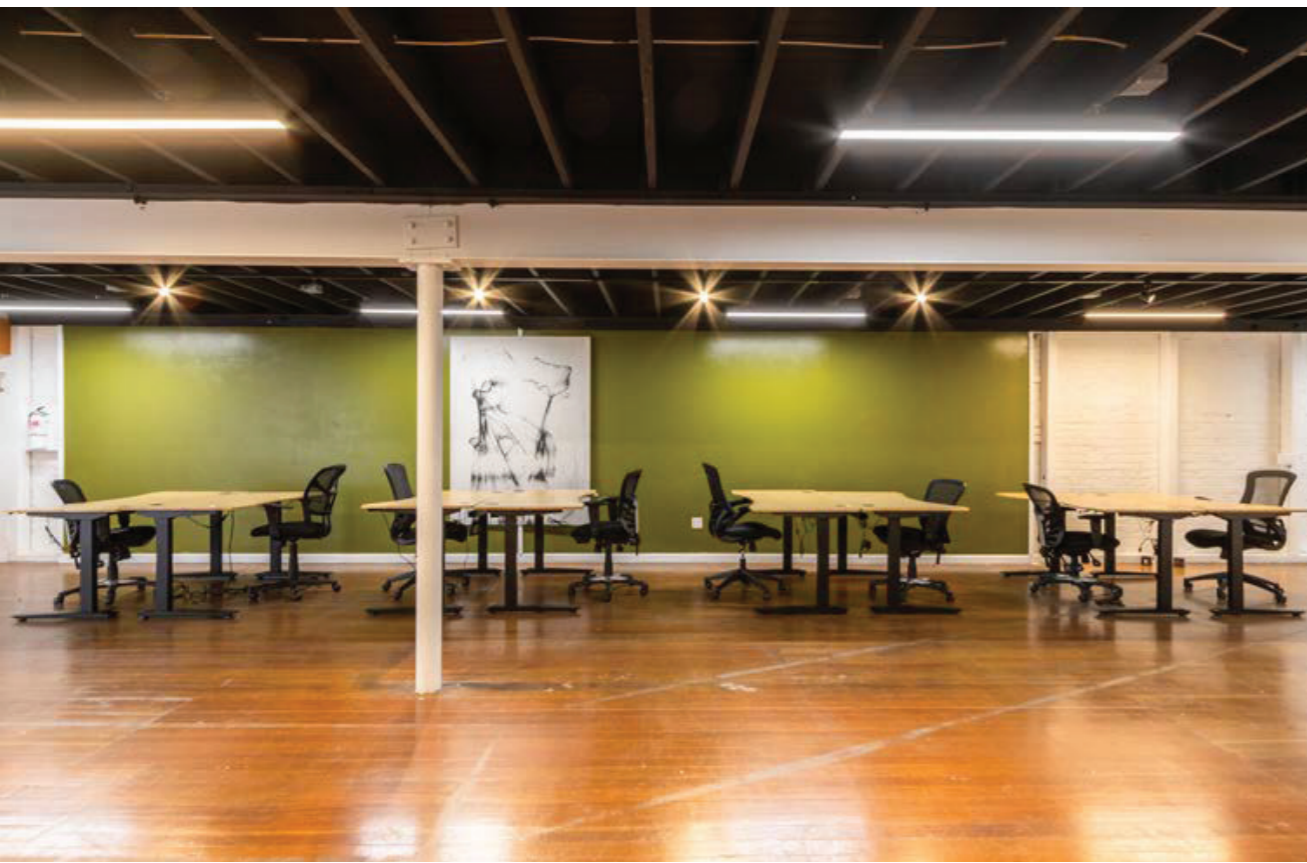
## LOWER LEVEL



# GALLERY

| 1154-1158 Howard St.

 **CALCO**  
COMMERCIAL, INC.



# LOCATION OVERVIEW

| 1154-1158 Howard St.

Desirable South of Market location, walkable to nearby amenities, public transportation and to surrounding neighborhoods.



**06 MIN** to Civic Center  
Bart  
**12 MIN** to Civic Center  
**23 MIN** to 16th Street Bart



**06 MIN** to 4th & King  
Caltrain  
**08 MIN** to Union Square  
**12 MIN** to Financial District



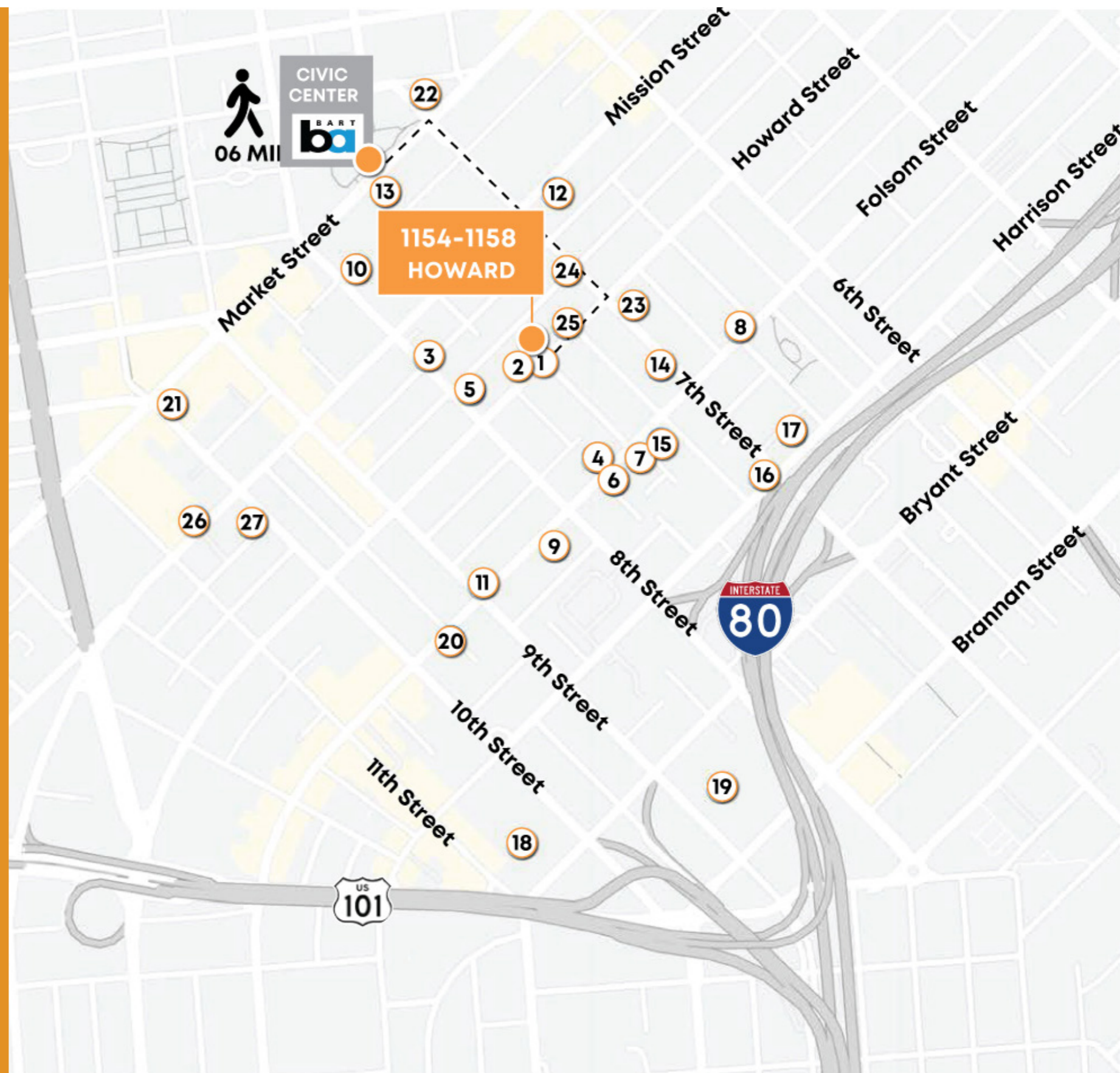
**04 MIN** to 80 On-Ramp  
**04 MIN** to 101 On-Ramp  
**06 MIN** to 280 On-Ramp



# NEARBY AMENITIES

| 1154-1158 Howard St.

- 1 Cellarmaker Brewing Co.
- 2 Rize Up Bakery
- 3 Sizzling Pot King
- 4 DECANTsf
- 5 Harvest Urban Market
- 6 Basil Thai Restaurant & Bar
- 7 Raven Bar
- 8 Deli Board
- 9 Driftwood
- 10 Whole Foods Market
- 11 Azúcar Lounge
- 12 Square Pie Guys
- 13 La Cuisine Cafe
- 14 Sightglass Coffee
- 15 Boba Guys
- 16 Rocco's Cafe
- 17 Rumors
- 18 Plaid Headquarters
- 19 Costco Wholesale
- 20 Trader Joe's
- 21 Powerhouse
- 22 Twitter HQ
- 23 Charmaine's Rooftop Bar
- 24 Champagne Society
- 25 Caffe Moda
- 26 Ritual Hot Yoga
- 27 WeWork
- 28 Urbana SOMA



# NEARBY AMENITIES

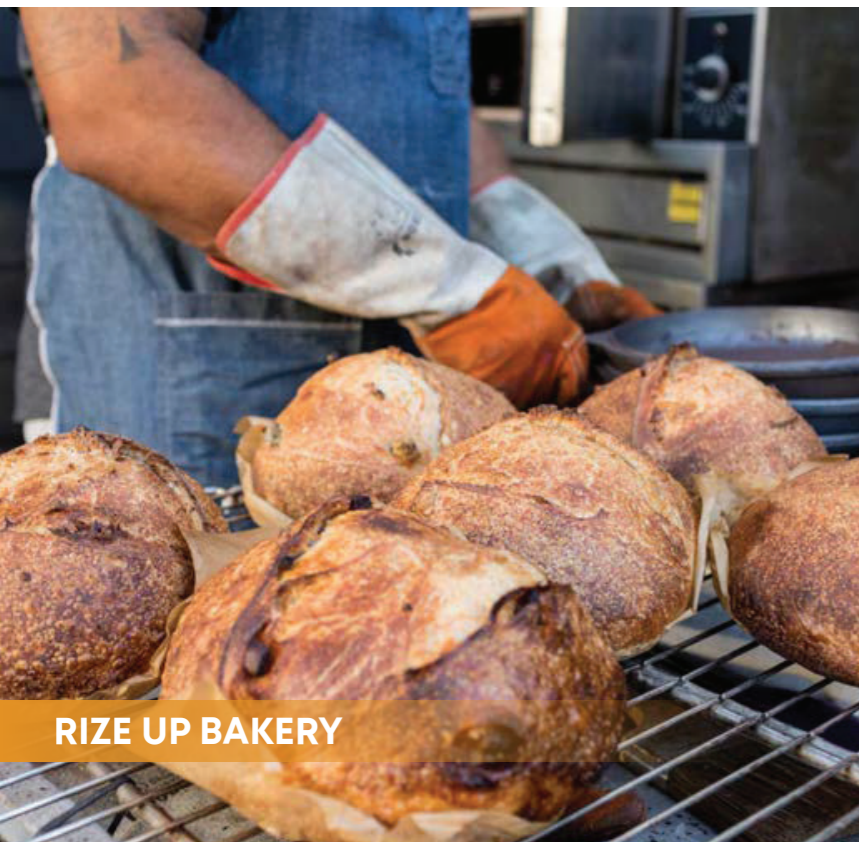
| 1154-1158 Howard St.



SIGHTGLASS COFFEE



CELLARMAKER BREWING CO.



RIZE UP BAKERY



DECANTSF



LA CUISINE CAFE



**TREVOR GUDIM**

Executive Vice President  
Email: [trevor@calco-sf.com](mailto:trevor@calco-sf.com)  
Cell: 858.922.2632  
DRE #01979980

**BENNETT FALONI**

Associate  
Email: [bennett@calcosf.com](mailto:bennett@calcosf.com)  
Cell: 724.678.2851  
DRE #01902075

**PIONEERING REAL ESTATE SOLUTIONS WITH PROVEN EXPERTISE**

Calco Commercial, founded in 2011 by Scott Mason, brings over 35 years of experience and 2,500+ transactions, totaling over \$2.2 billion in sales and leases. Specializing in leasing and sales of commercial real estate in the San Francisco Bay Area and nationwide, we consistently rank as a top-producing firm. With deep knowledge of the Bay Area market, our team offers clients over three decades of expertise and exceptional customer service, providing the tools and guidance to navigate the ever-changing commercial real estate landscape.