



For Lease

329 Carrall Street

688 SF Retail Space

Vancouver BC

CBRE

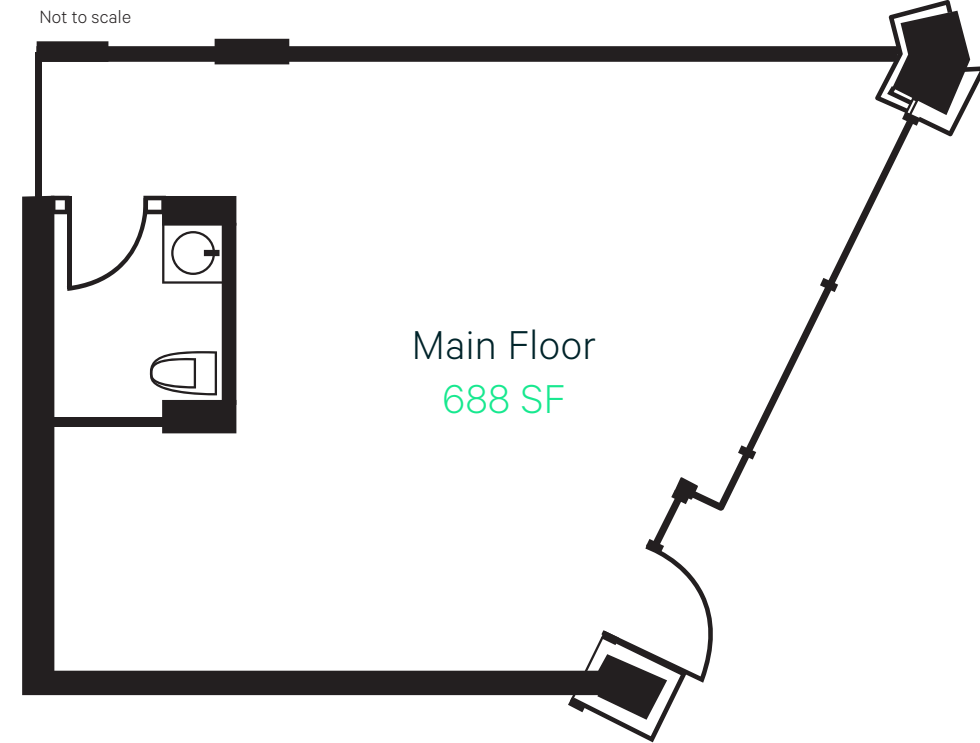
329 Carrall Street
Vancouver, BC

The Opportunity

An opportunity to lease retail/restaurant space in a brand-new state of the art building with heritage touches in the heart of Gastown.



Retail Space | For Lease



Space Features

- + 200 amps of power
- + 13' foot ceiling heights
- + Handicap accessible washroom (Not pictured in photos)
- + Dedicated HVAC unit
- + 38 residential units above
- + Adjacent space leased to Pizza Pizza

Property Details



PREMISES
688 sq. ft.



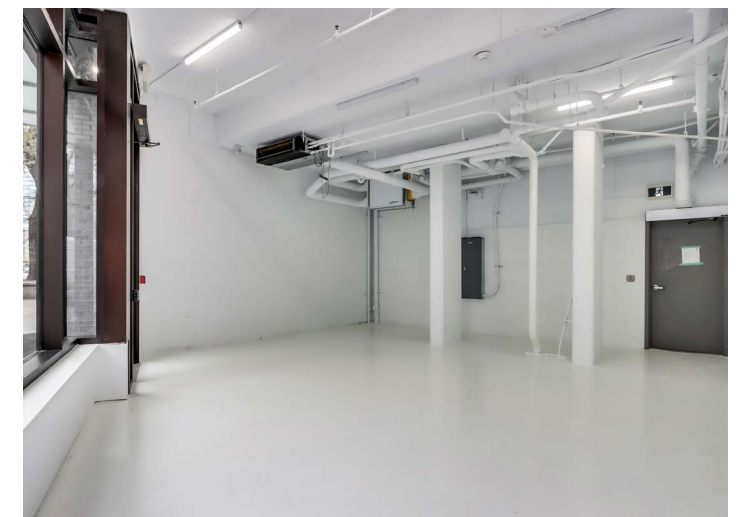
AVAILABILITY
October 1, 2023



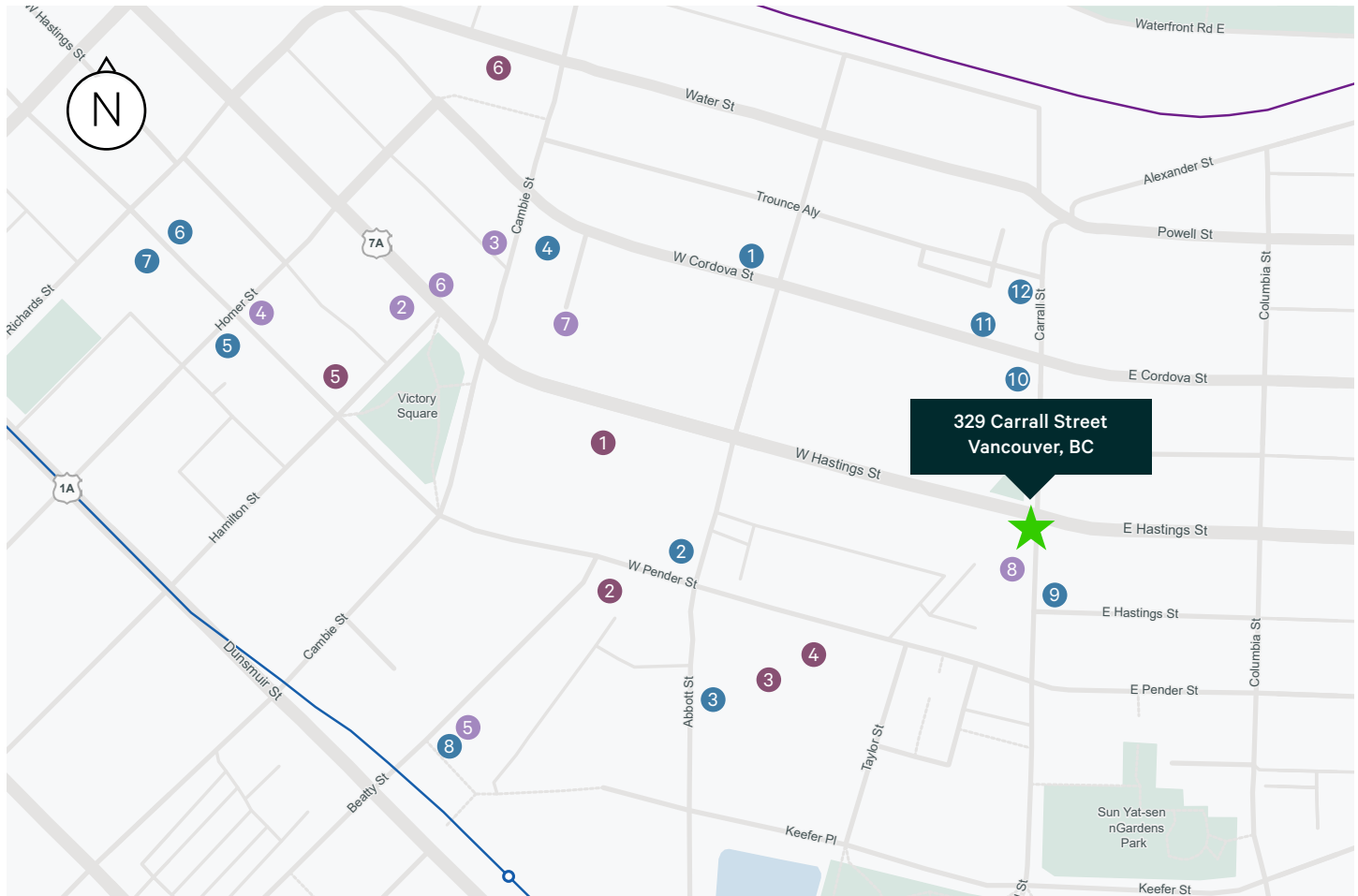
ASKING GROSS RENT
\$3,500 per month



ZONING
HA2 (Allows for retail, restaurant, and among many other uses)



Location



Nearby Amenities

● FITNESS

1. All City Athletics
2. Kaylev Fitness Solution
3. FighterFit ATHLETIX
4. Iron Lab
5. Yard Athletics
6. Tantra Fitness Vancouver

● CAFES

1. Prado Cafe
2. Nemesis Coffee
3. Revolver
4. Finch's
5. Jam Cafe

● RESTAURANTS

1. La Casita
2. The Pint Public House
3. Tokyo In April
4. The Cambie Bar & Grill
5. Crema Cafe Bar
6. Holly Chow
7. Pholicious
8. Chambar
9. Calabash Bistro
10. Di Beoce Restaurant
11. Tacofino Taco Bar
12. Twisted Fork

Contact Agents

Brayden Sangha

Personal Real Estate Corporation
CBRE Limited | Office Leasing & Sales
brayden.sangha@cbre.com
604 329 8882

Blake Davies

Colliers International
Associate Vice President
blake.davies@colliers.com
778 980 3548



CBRE Limited
1021 West Hastings Street #2500 | Vancouver, BC
www.cbre.ca

This disclaimer shall apply to CBRE Limited, Real Estate Brokerage, and to all other divisions of the Corporation; to include all employees and independent contractors ("CBRE"). The information set out herein, including, without limitation, any projections, images, opinions, assumptions and estimates obtained from third parties (the "Information") has not been verified by CBRE, and CBRE does not represent, warrant or guarantee the accuracy, correctness and completeness of the Information. CBRE does not accept or assume any responsibility or liability, direct or consequential, for the Information or the recipient's reliance upon the Information. The recipient of the Information should take such steps as the recipient may deem necessary to verify the Information prior to placing any reliance upon the Information. The Information may change and any property described in the Information may be withdrawn from the market at any time without notice or obligation to the recipient from CBRE. CBRE and the CBRE logo are the service marks of CBRE Limited and/or its affiliated or related companies in other countries. All other marks displayed on this document are the property of their respective owners. All Rights Reserved.

Mapping Sources: Canadian Mapping Services canadamapping@cbre.com; DMTI Spatial, Environics Analytics, Microsoft Bing, Google Earth.