



Space Profile for

Unit: #20

Area: 2500 sq ft

Address

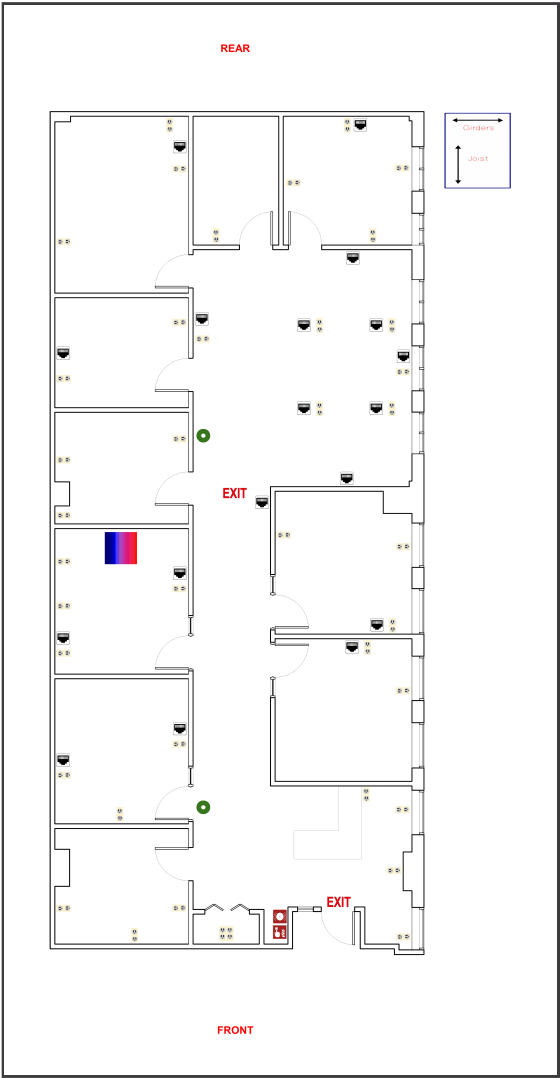
351 N Frontage Rd #A200

New London, CT 06320



601 S. Harbour Island Blvd., Suite 109

Tampa, FL, 33602



Legend

	Breaker Panel		Fire Extinguisher		Ceiling Fan w/ Light		Fire Sprinkler
	Circular Column		Fire Alarm Pulldown		Rectangular Column		Pocket Door
	Appliance Outlet		Glass Door		Refrigerator		Track Lighting
	Fire Alarm		Handicap Handrail		Roll-Up Door		2-Bulb Fluorescent Lighting
	Drinking Fountain		Roof Hatch		Sink		3-Bulb Fluorescent Lighting
	Door		HVAC Unit		Swing Door		4-Bulb Fluorescent Lighting
	Double Hung Door		Recessed Light		Toilet		Ceiling Air Vent
	Electrical Outlet		Staircase		Can Light		Air Diffuser
	Emergency Light		Water Heater		Urinal		Ceiling Fan w/o Light
	Exit Light		Telephone Panel		Thermostat		Air Handler
	Tankless Water Heater		Window Wall Opening		RJ 45		Fire Alarm Control Panel
	Step Down Transformer		Maintenance Sink		Window		Tenant Water Meter
	Disconnect		Sub Water Meter		House Gas Meter		Sub Gas Meter
	House Water Meter		Air Handler		House Electric Meter		Tenant Electric Meter
	Tenant Gas Meter						
	Sub Electric Meter						



Space Overview

Overview	Actual Square Footage	Measured Depth of Space
	2500 SQFT	75' 0"

Thickness	Front Wall	Rear Wall	Left Wall	Right Wall
	0' 5"	5' 0"	0' 5"	1' 1"

Flooring	Concrete	Carpet	Tile	Other	Unit	Total
		2245.85 SQFT			2500 SQFT	2245.85 SQFT

Ceiling Information	Height From Floor To Ceiling	Height From Floor To Bottom Of Deck	Height From Floor To Bottom Of Joist
	Front: 10' 2" Back: 10' 2"	Front: 22' 9" Back: 22' 9"	Front: 20' 11" Back: 20' 11"

Ceiling Information Cont.	Clear Ceiling Height
	10' 2"

Mechanical

HVAC	Reference	Manufacturer	Model	Serial	Tonnage	Year	Notes
	1	RHEEM	RKKA-A085CL13E	2G6219ADAAF330805921	7	2008	

Not Present	No HVAC	No AHU (Air Handler)
	No	Yes

Electric

Disconnect	Reference	Amps	Location	UL Number	Manufacturer	Handle or Breaker	Notes
	1	200	Electrical Room	Not Listed	Siemens	Handle	

Electric Meter	Reference	Meter #	Location	Amps	Notes
	1	89382179	Electrical Room		

Service Panel	Reference	Amps	Service Type	Panel Type	Panel UL Number	Manufacturer	Location	Notes
	1	225	277/480	A Series	GF 678143	General Electric	Electrical Room	Circuit Breakers: 6
	2	225	120/208	A Series	GF 844570	General Electric	Electrical Room	Circuit Breakers: 44

Step Down Transformer	Reference	Size (kVA)	Service Type	Notes
	1	75	120/208	

IDPlans does not provide an Ampacity Report

Plumbing

Not Present	No Water Meters	No Water Heater	No Water Fountains	No Backflows
	Yes	Yes	Yes	Yes

Waste

Not Present	No Grease Traps	No Grease Containers
	Yes	Yes

Fire

Not Present	No Fire Extinguishers	No Fire Alarm Control Panels	No Sprinkler Heads	No Fire Risers
	No	Yes	Yes	Yes

Sprinkler Heads	Sprinkler Heads Present	Riser Located in Space	Additional Information
	22	No	

Gas

Gas Meter	Reference	Meter #	Location	Size	Notes
	1	685133	Rear Exterior	2 inch	

Room

Not Present	No Restrooms
	Yes