



FOR LEASE | FLEX SPACES

# 14101 Sullyfield Circle

Chantilly, VA



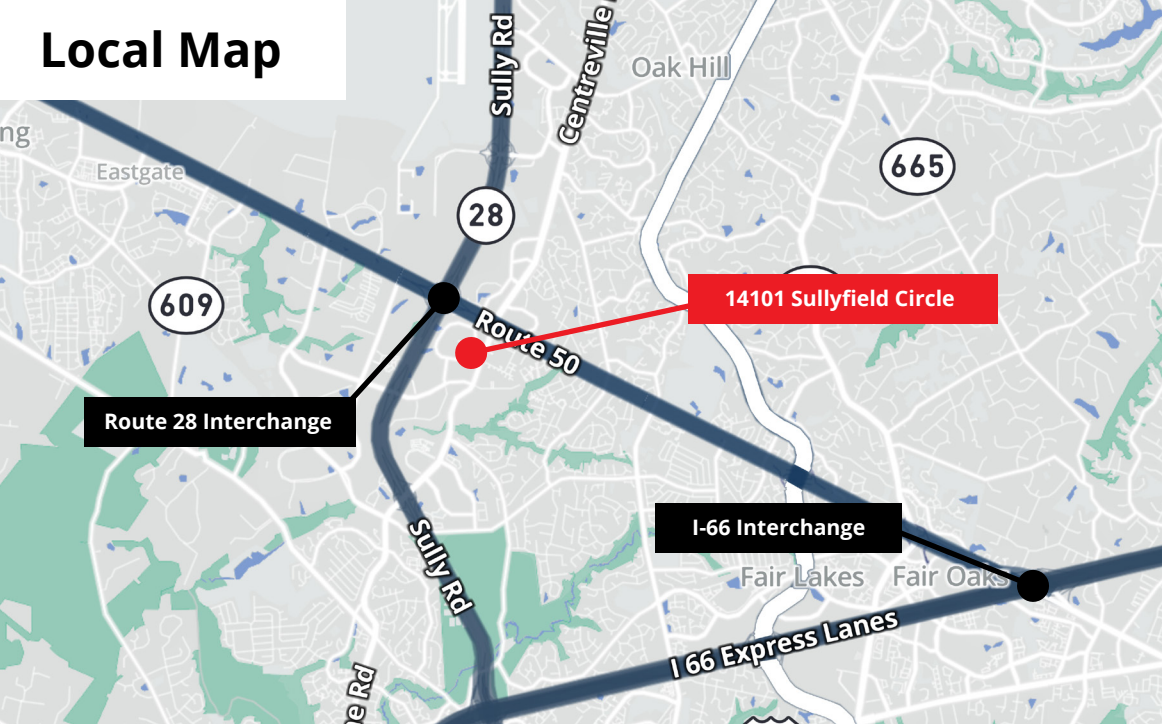
## Up To 10,000 SF of Flex Warehouse Available For Lease

14101 Sullyfield Circle is a flex/industrial property in Chantilly, VA, offering suites ranging from 2,105 SF to 10,709 SF with both dock-high and drive-in loading, clear heights up to 22 feet, and flexible office buildouts.

Now under the ownership of Fernau LeBlanc, a Washington, D.C.-based real estate firm, tenants benefit from both a highly functional building and a dedicated ownership team focused on long-term success.



## Local Map



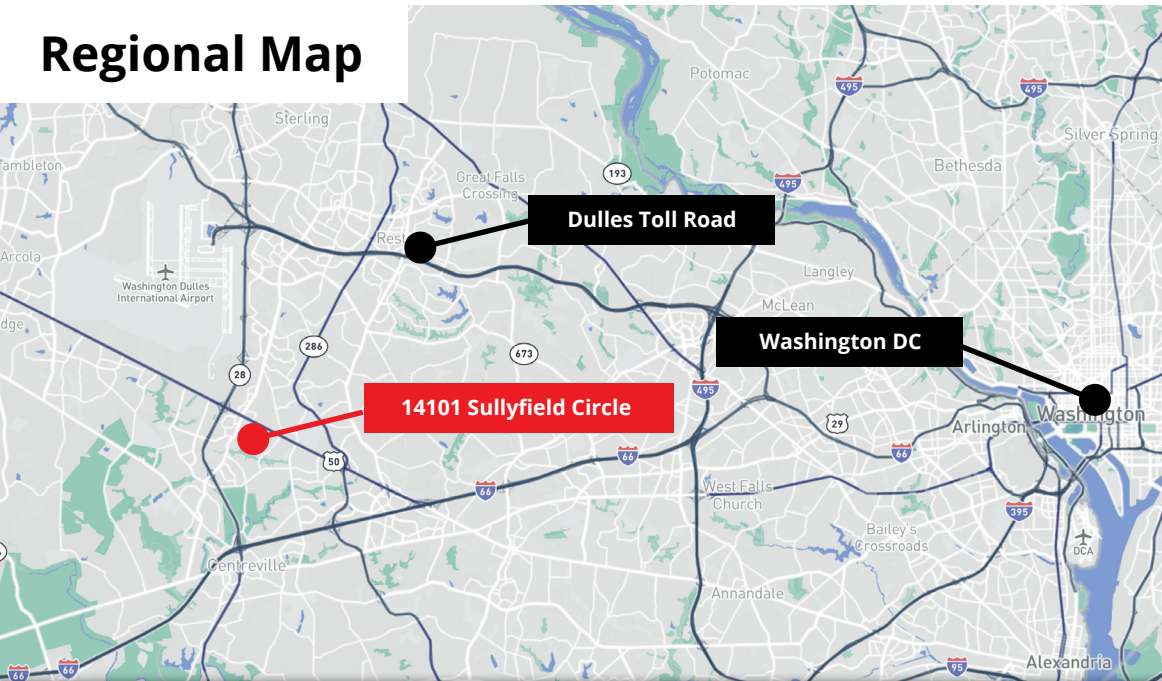
## Located in the thriving Dulles South industrial submarket.

14101 Sullyfield's convenient location in Chantilly offers easy access for logistics, distribution, and commercial operations.

This property benefits from proximity to major transportation routes including Route 28, Route 50, and I-66 — streamlining access to the broader Washington, D.C. region.

Your favorite restaurants, cafes, grocery stores, retailers and service providers are in close proximity and just a few minutes away.

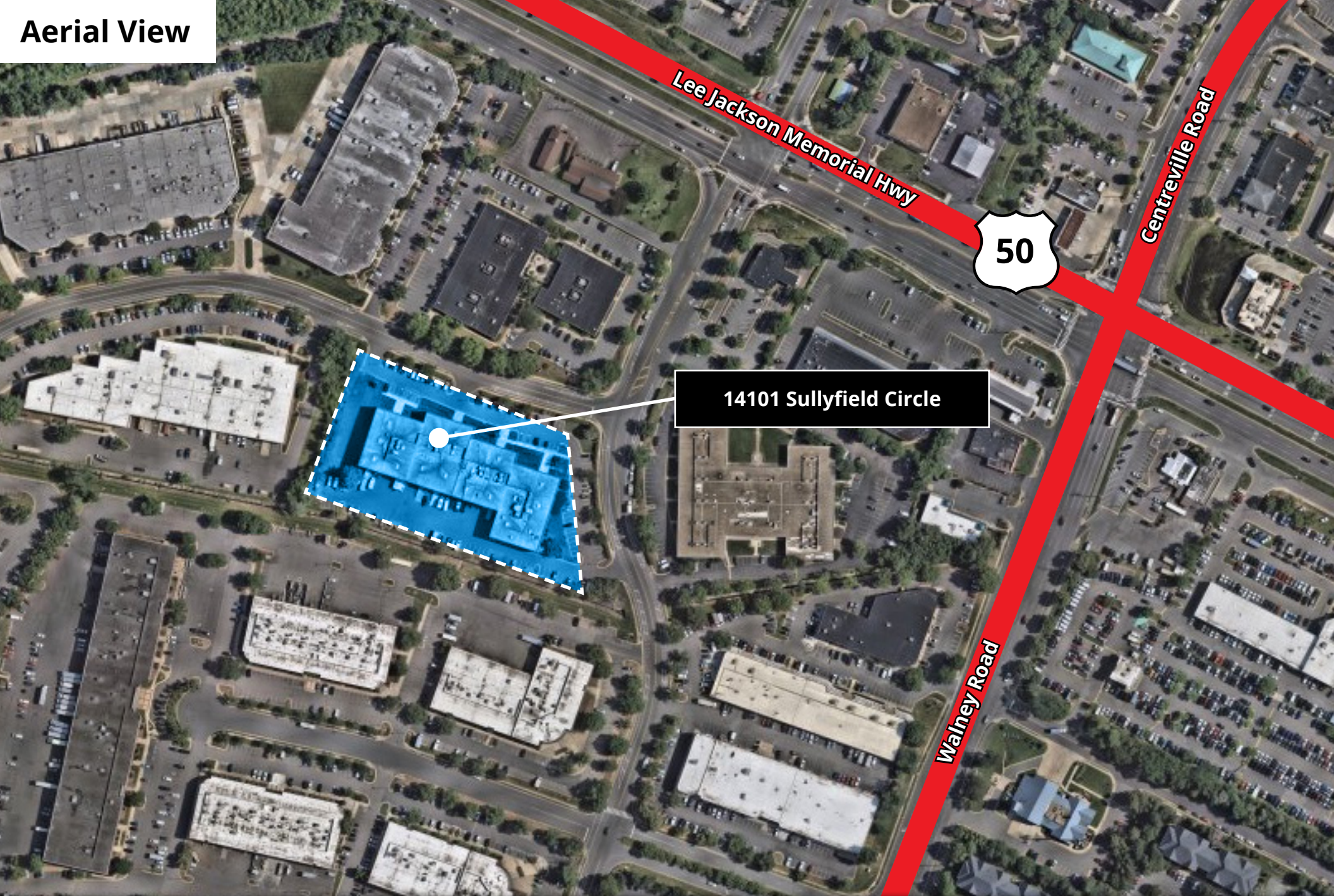
## Regional Map



### Nearby amenities (within a <10 minute drive)



**Aerial View**

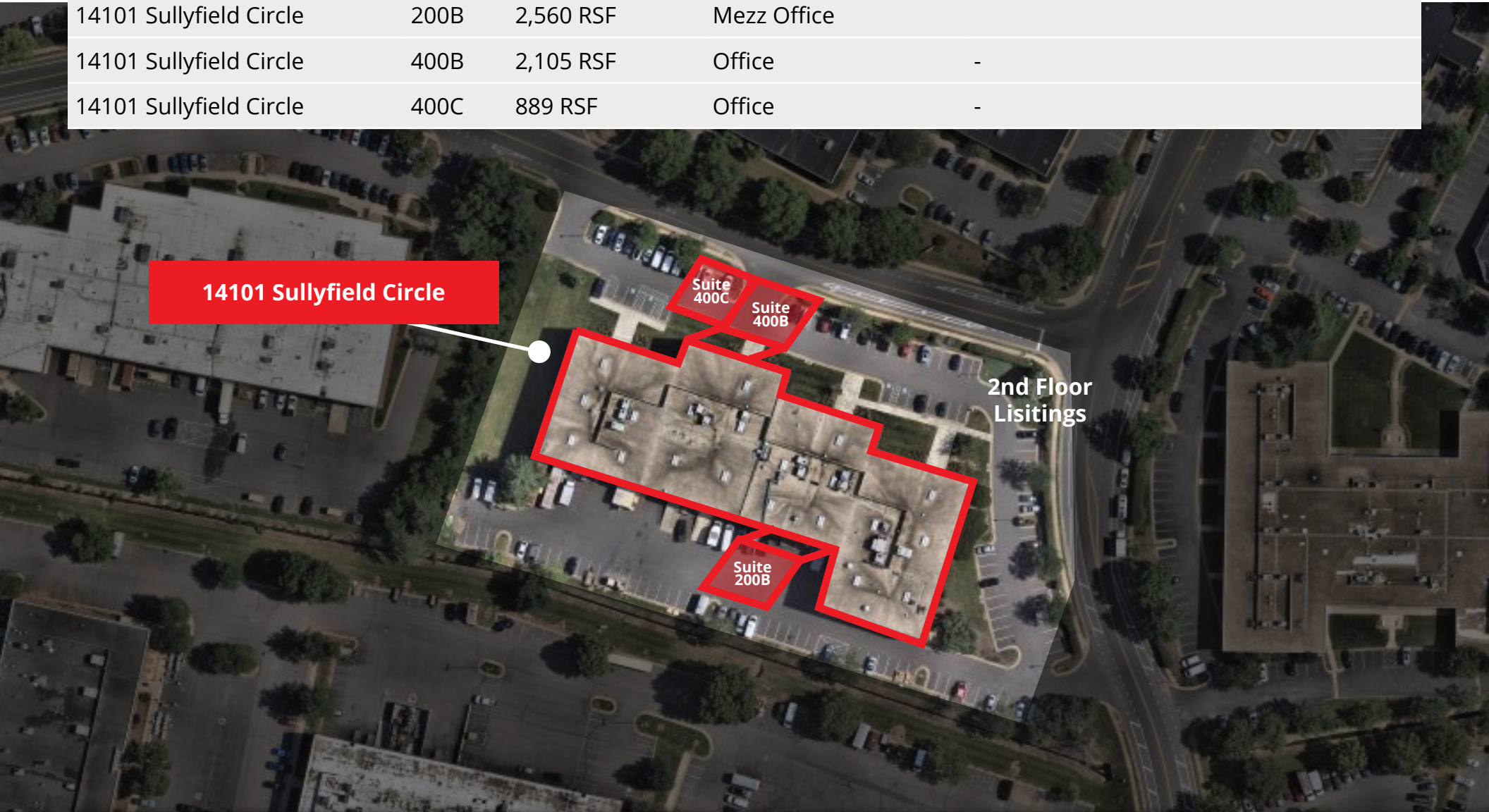


**14101 Sullyfield Circle**



## Current Availabilities *(click below to navigate to desired suite)*

Building	Suite	SF	Space Type	Notes
14101 Sullyfield Circle	200B	2,560 RSF	Mezz Office	
14101 Sullyfield Circle	400B	2,105 RSF	Office	-
14101 Sullyfield Circle	400C	889 RSF	Office	-

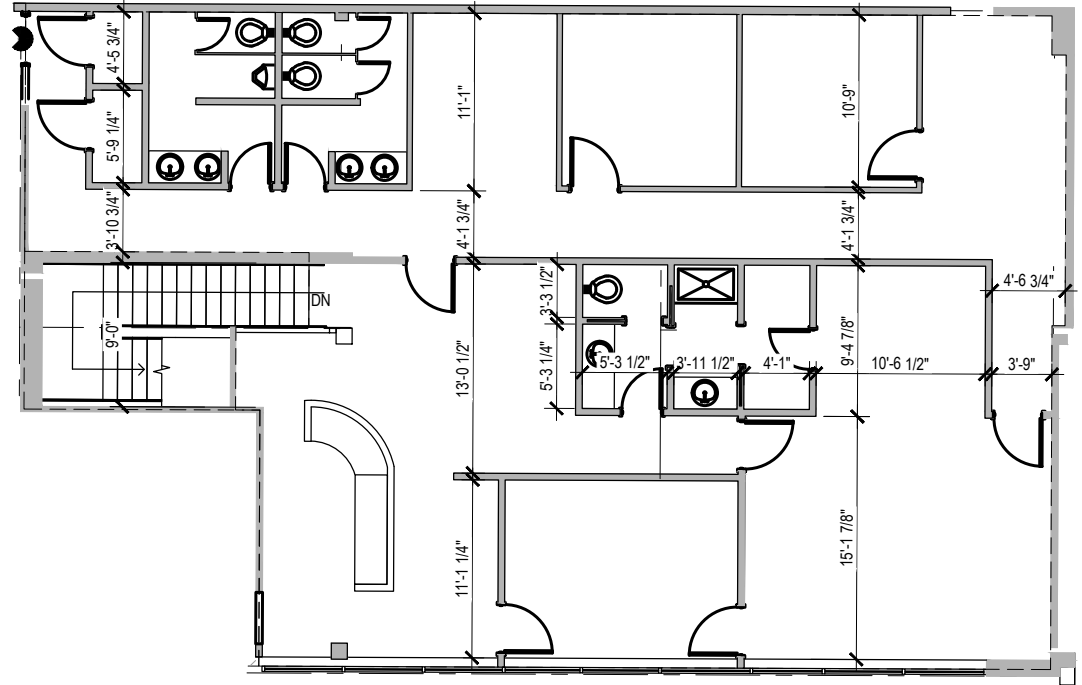


# 14101 Sullyfield Circle

Suite 200B | 2,560 RSF  
Floor 2

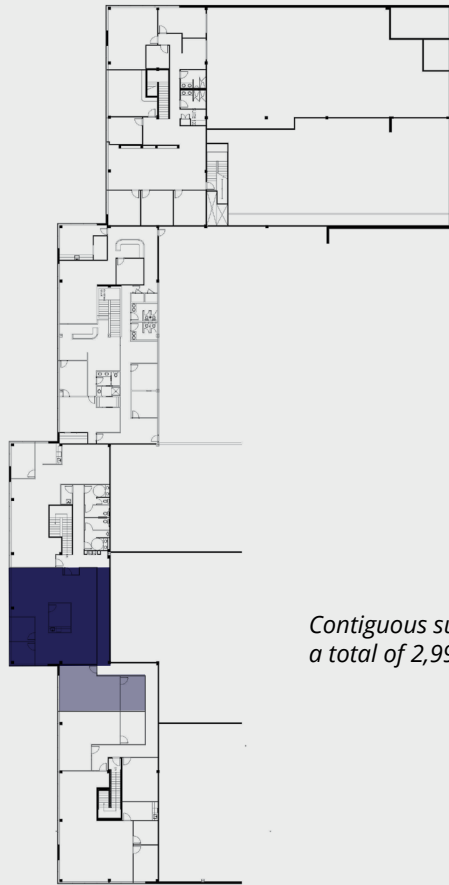


KEY PLAN



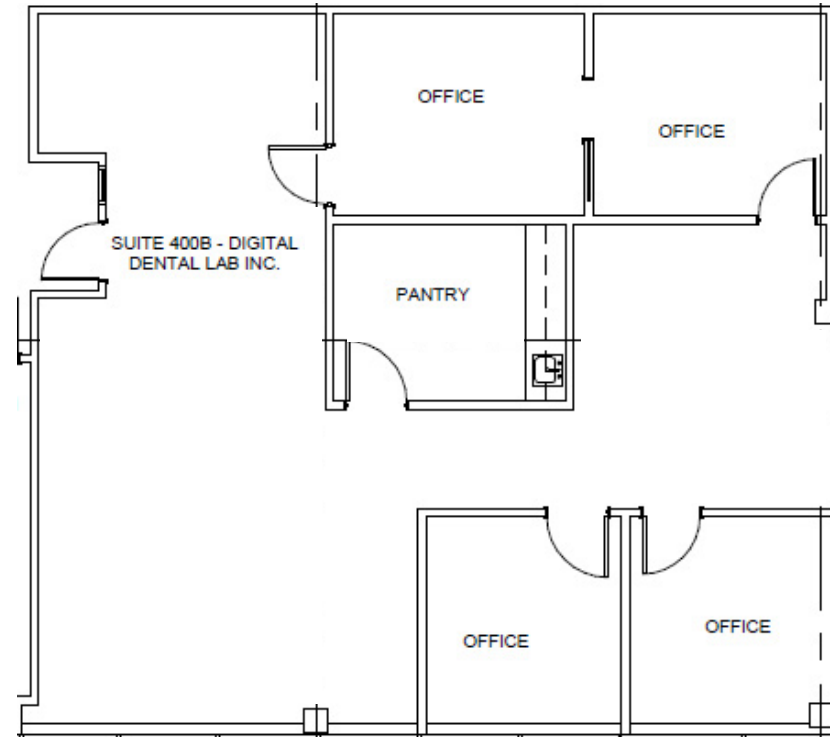
## Office Features

**14101 Sullyfield Circle**  
Suite 400B | 2,105 RSF  
Floor 2



*Contiguous suite for  
a total of 2,994 SF*

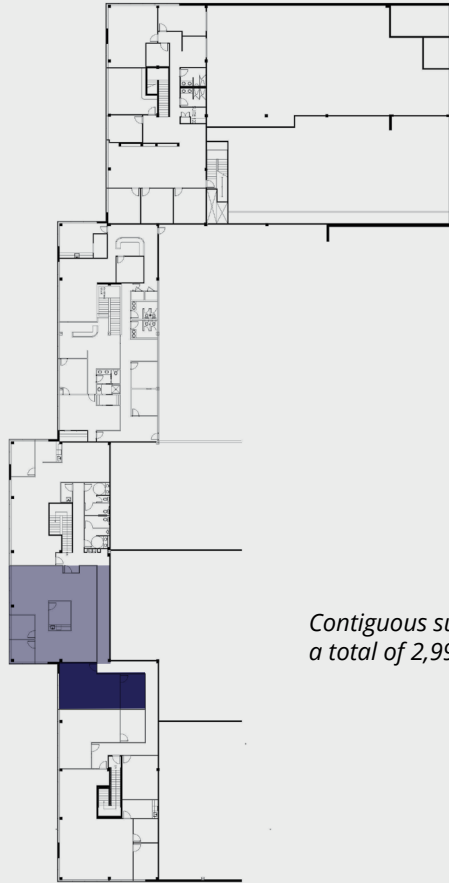
KEY PLAN



**Office  
Features**

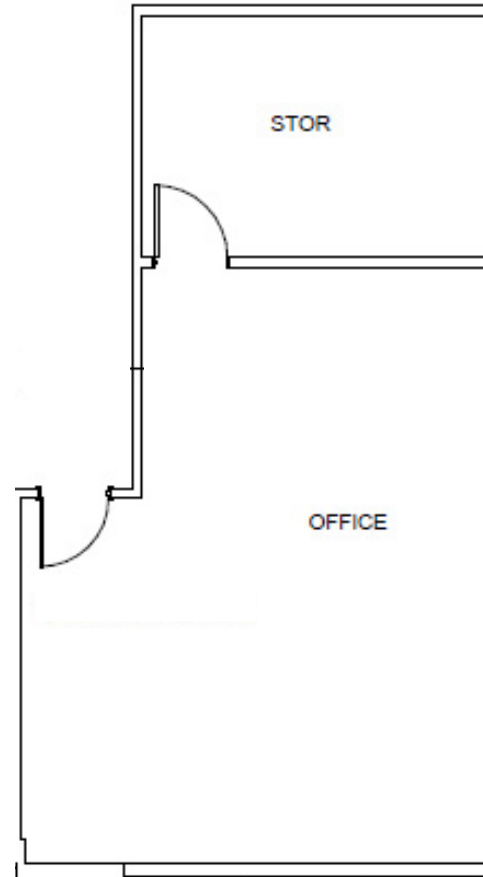
- 2 Offices

**14101 Sullyfield Circle**  
Suite 400C | 889 RSF  
Floor 2



*Contiguous suite for  
a total of 2,994 SF*

KEY PLAN



**Office  
Features**



# 14101 Sullyfield Circle, Chantilly VA

## AVISON YOUNG METRO DC INDUSTRIAL TEAM

Edward (Bert) Harrell  
Principal  
bert.harrell@avisonyoung.com  
703.288.2702

Tripp Tarro  
Vice President  
tripp.tarro@avisonyoung.com  
703.992.6053



**AVISON  
YOUNG**

© 2025. Avison Young – Washington, D.C., LLC Information contained herein was obtained from sources deemed reliable and, while thought to be correct, have not been verified. Avison Young does not guarantee the accuracy or completeness of the information presented, nor assumes any responsibility or liability for any errors or omissions therein.