

300 East 59th Street | Prime Midtown East Corner Office

4,300 SF | Flexible Layout | Private Balconies

Welcome to a rare opportunity at **300 East 59th Street**, offering 4,300 square feet of versatile office space on the second floor of this landmark building. This corner suite spans the full western exposure along Second Avenue and the full southern exposure, flooding the space with exceptional natural light throughout the day.

Suites 201 and 202 can be **subdivided, taken separately, or combined.**

Highlights

Approx. 4,300 SF of prime office space

Expansive open floorplan with subdivided prebuilt offices

Private balconies facing Second Avenue

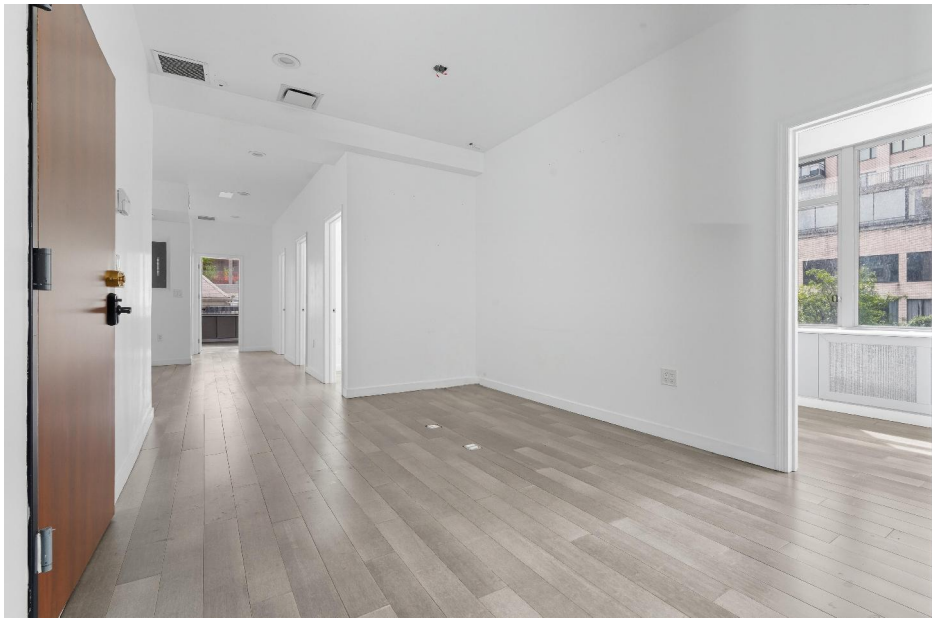
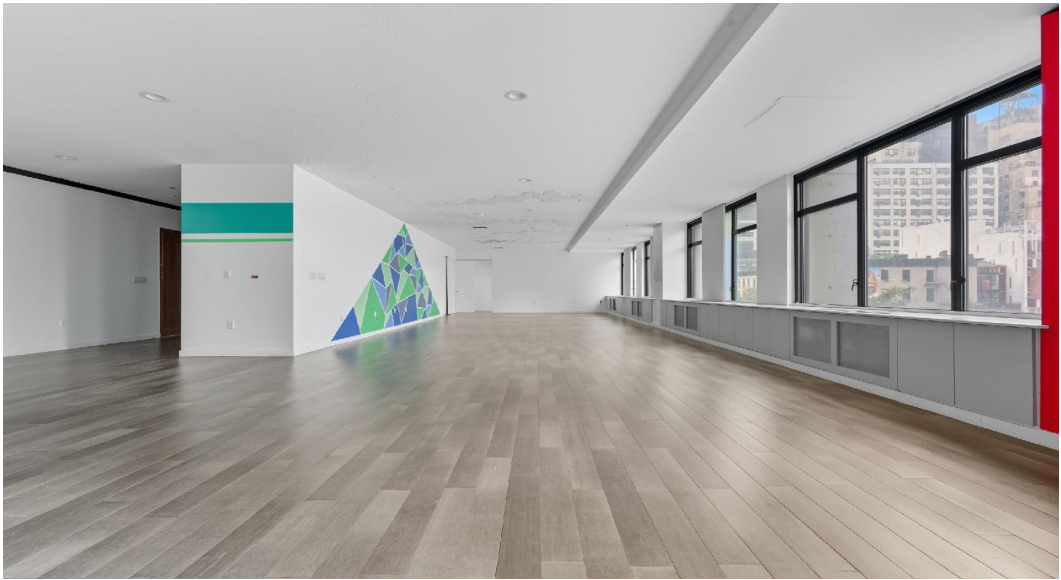
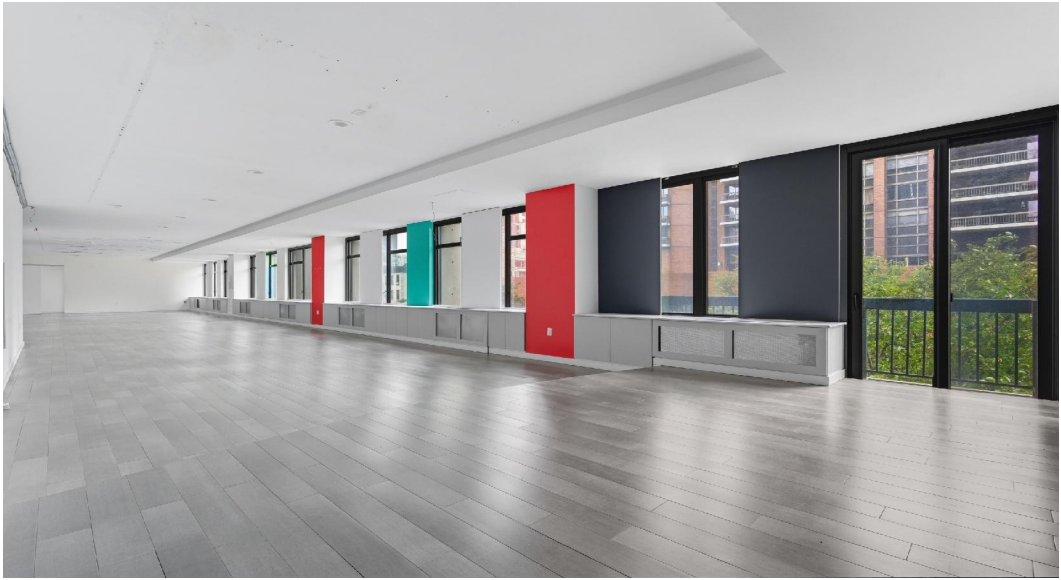
Corner suite with two exposures (west & south)

Excellent natural light throughout

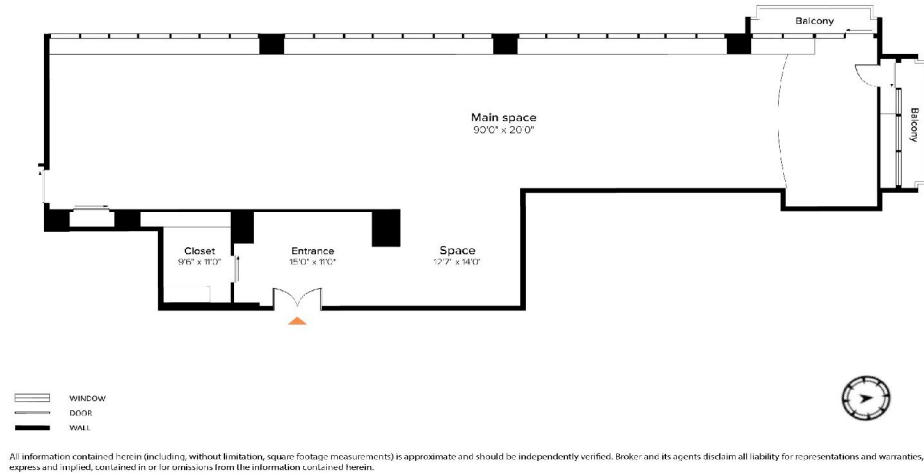
Kitchen/pantry included

Flexible configuration: creative studios, tech, professional offices, or hybrid uses

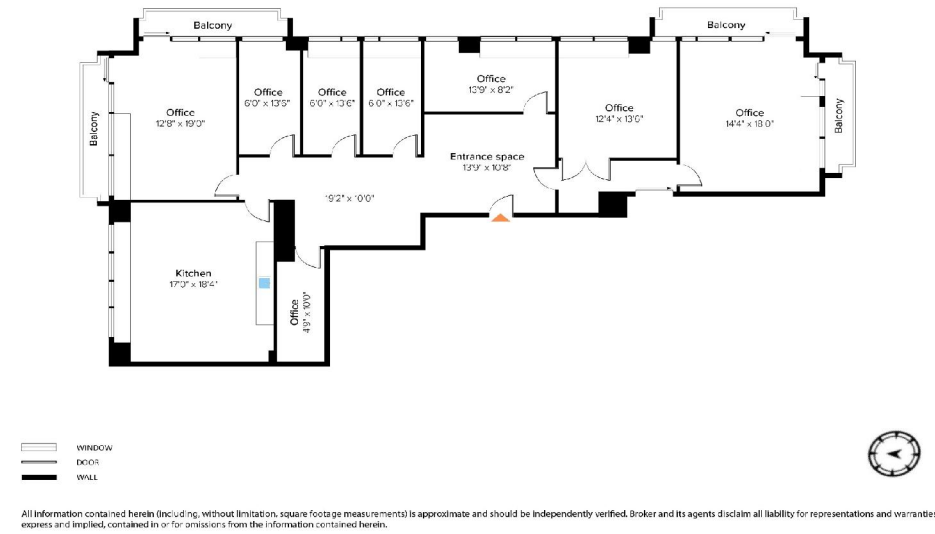




300 59th Street #200, New York



300 59th Street #201, New York



Joshua Sloyer
Principal Broker
Sloyer Real Estate Corp.
445 Park Avenue, 9th Floor, New York, NY 10022
■ SloyerRealEstate@gmail.com | ■ 212-960-3437

300 East 59th Street | Suite 200

Approx. 2,450 SF | Expansive Main Space with Balconies

Suite 200 offers approximately 2,450 square feet, featuring a **90-foot by 20-foot open main space**, plus private balcony access. The suite is ideal for **showrooms, collaborative offices, or creative studios**, benefiting from western exposure along Second Avenue and outstanding natural light.

Highlights

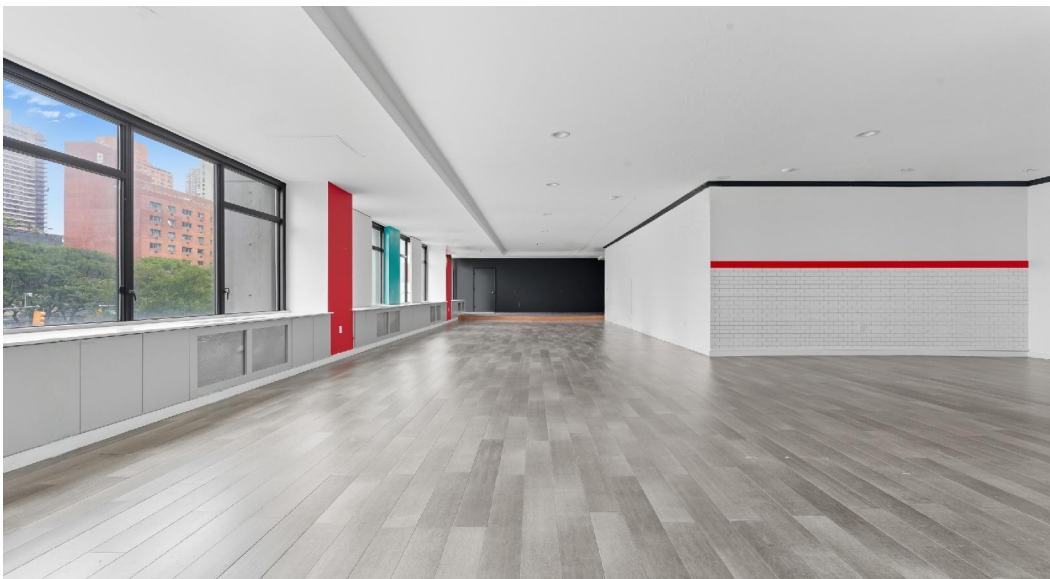
Approx. 2,450 SF

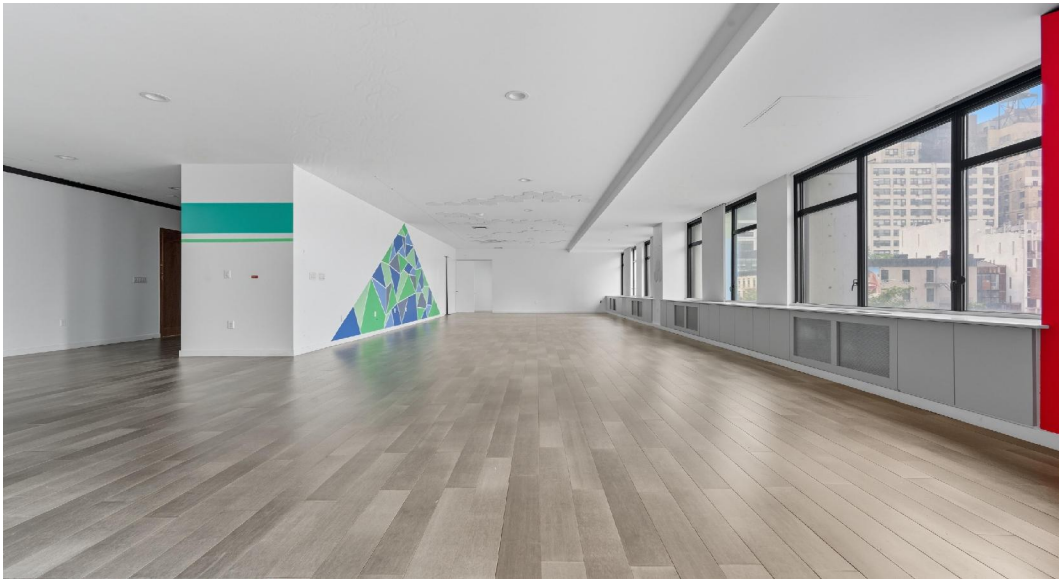
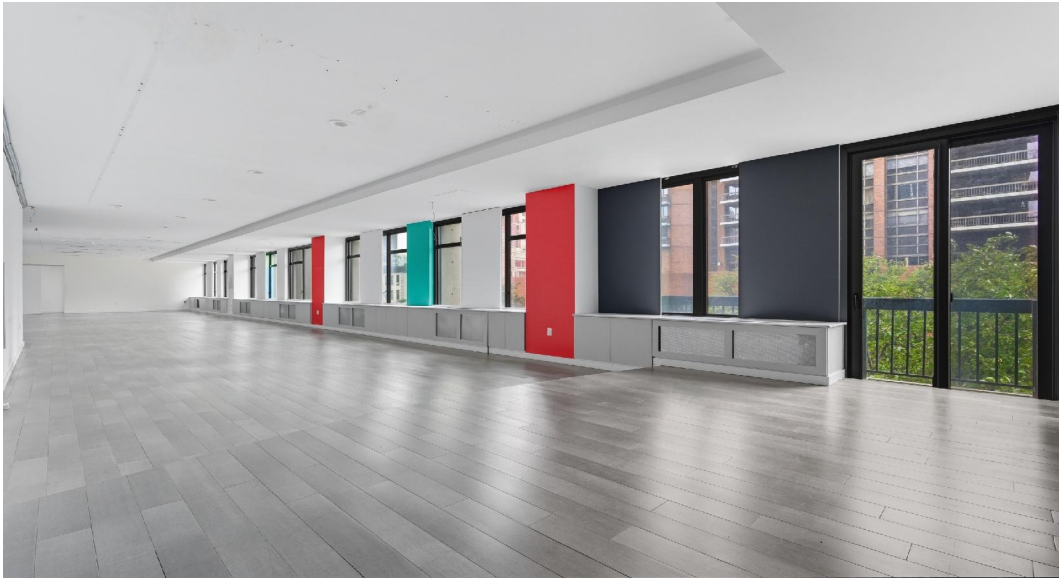
Massive 90' x 20' open main space

Private balcony

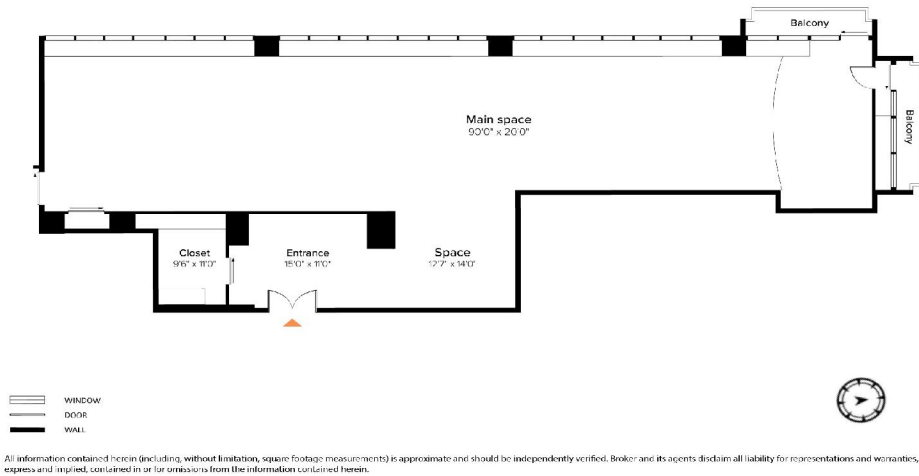
Flexible layout

Ideal for showroom, creative, or collaborative office use





300 59th Street #200, New York



Joshua Sloyer

Principal Broker

Sloyer Real Estate Corp.

445 Park Avenue, 9th Floor, New York, NY 10022

■ SloyerRealEstate@gmail.com | ■ 212-960-3437

300 East 59th Street | Suite 201

Approx. 1,850 SF | Private Offices with Balconies

Suite 201 provides approximately 1,850 square feet with a balance of **private offices, cubicle-style workspaces, and balconies** overlooking Second Avenue. The suite also includes a **kitchen/pantry** and is ideal for **professional services, tech firms, and hybrid office setups**.

Highlights

Approx. 1,850 SF

Private offices with balcony access

Kitchen/pantry included

Excellent natural light

Flexible configuration





300 59th Street #201, New York



All information contained herein (including, without limitation, square footage measurements) is approximate and should be independently verified. Broker and its agents disclaim all liability for representations and warranties, express and implied, contained in or for omissions from the information contained herein.

Joshua Sloyer

Principal Broker

Sloyer Real Estate Corp.

445 Park Avenue, 9th Floor, New York, NY 10022

■ SloyerRealEstate@gmail.com | ■ 212-960-3437