

FOR SUBLEASE

3100 W. BURBANK BLVD., BURBANK, CA



TODD WUSCHNIG
PRINCIPAL
818.933.0301
twuschnig@lee-re.com
License ID #01367230

JENNIFER DONALDSON
PRINCIPAL
818.933.0347
jdonaldson@lee-re.com
License ID #01317737

 **LEE &
ASSOCIATES**
COMMERCIAL REAL ESTATE SERVICES

No warranty or representation is made to the accuracy of the foregoing information. Terms of sale or lease and availability are subject to change or withdrawal without notice.

3100 W. BURBANK BLVD., BURBANK, CA

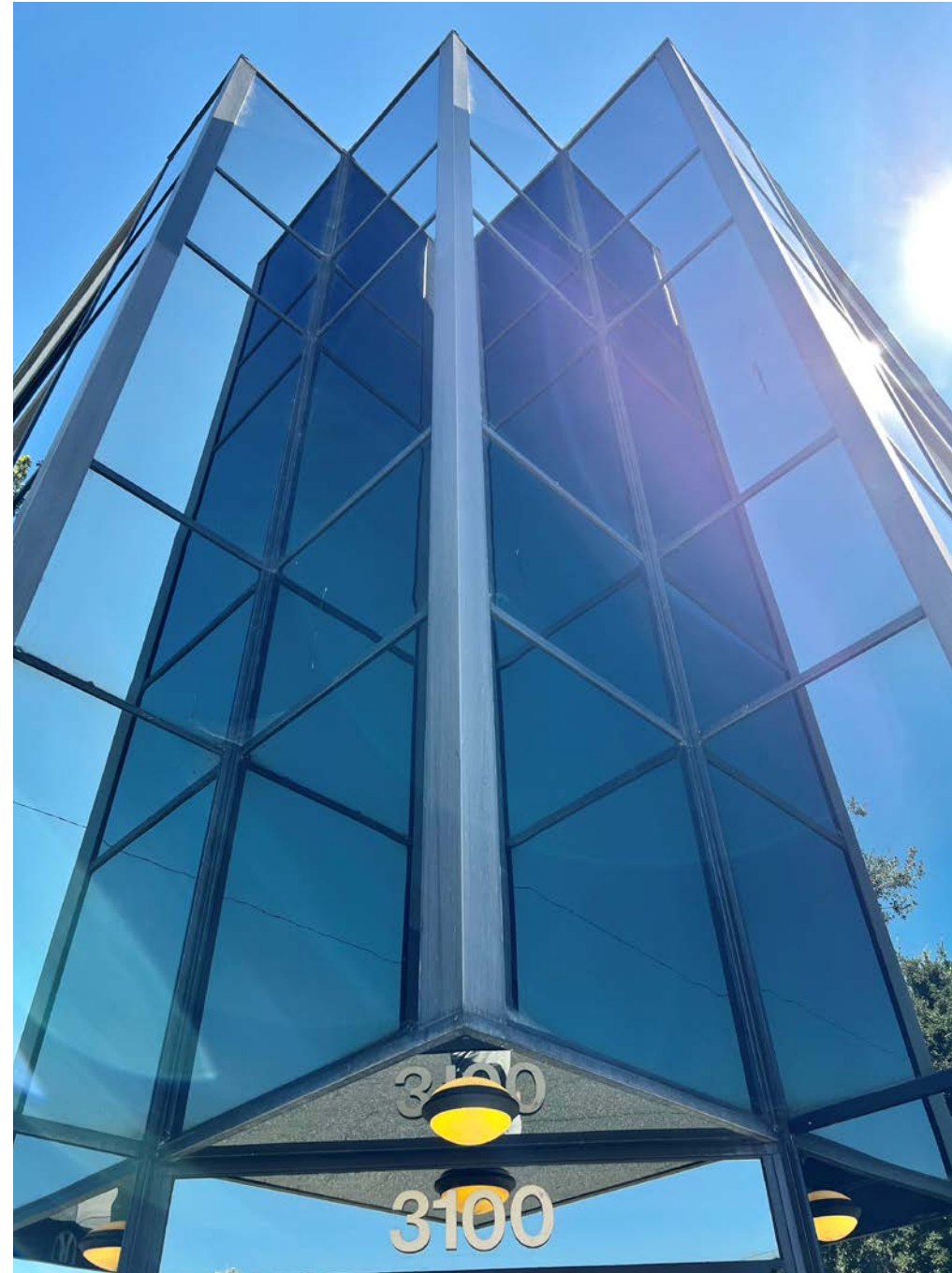
PROPERTY INFORMATION

SUITE 101

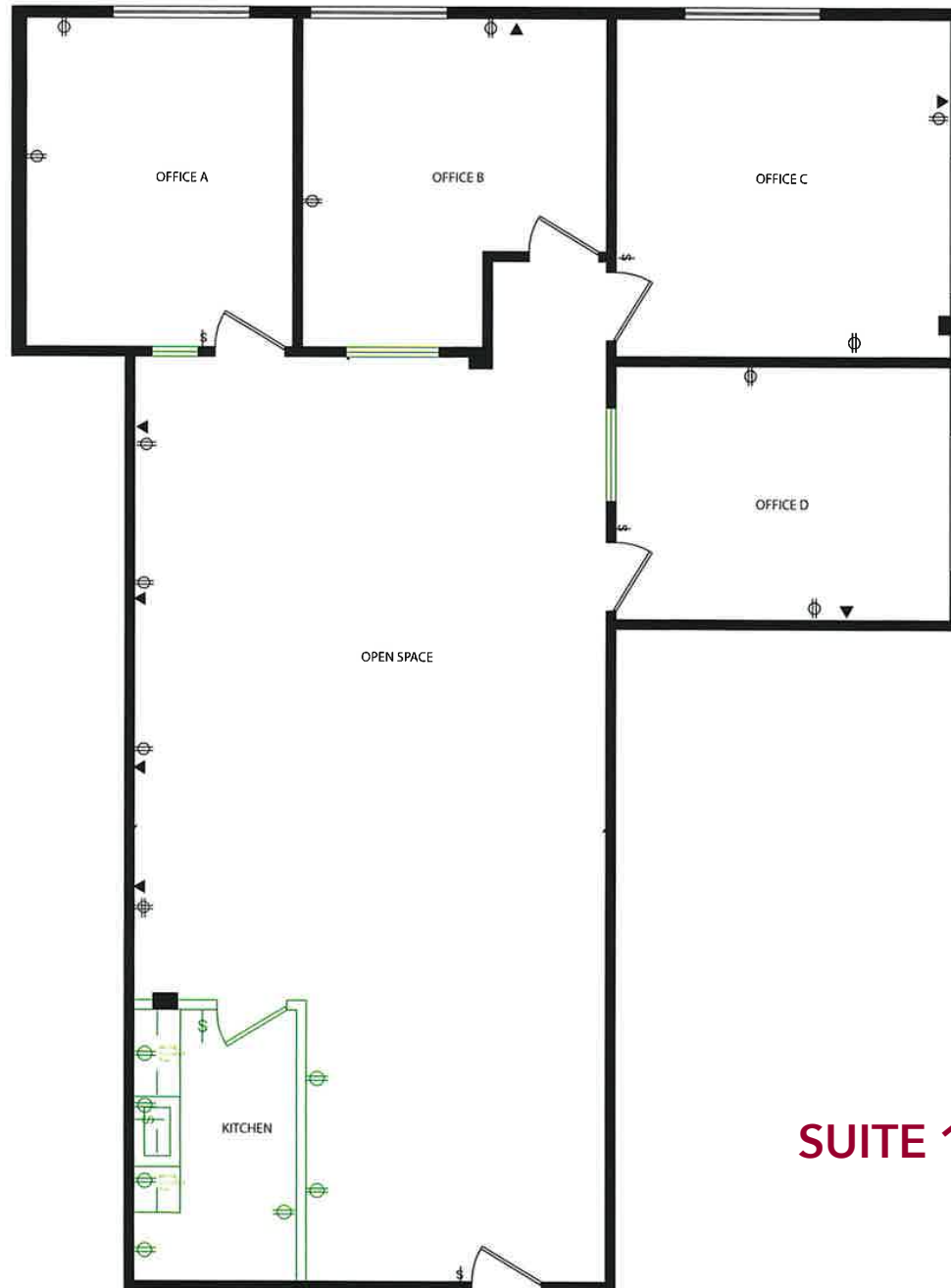
- Size: 1,820 SF
- Rate: \$1.95/SF
- Term: Thru November 31, 2027
- Parking: Two (2) Reserved Spaces at \$50 per car per month

PROPERTY HIGHLIGHTS

- New Common Area Renovations
- Covered and Gated Parking
- Good Street Parking
- Bus Line
- Located in the heart of Burbank
- Close Proximity to the Media District
- No Gross Receipts Tax
- Centrally located with easy access to the 5, 101, 134 and 170 Freeways

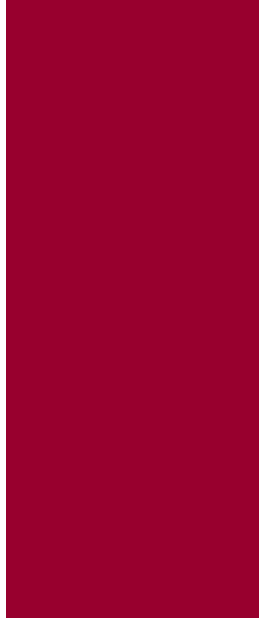


3100 W. BURBANK BLVD., BURBANK, CA



SUITE 101 - 1,820 SF

3100 W. BURBANK BLVD., BURBANK, CA



3100 W. BURBANK BLVD., BURBANK, CA



TODD WUSCHNIG
PRINCIPAL
818.933.0301
twuschnig@lee-re.com
License ID #01367230

JENNIFER DONALDSON
PRINCIPAL
818.933.0347
jdonaldson@lee-re.com
License ID #01317737

LEE & ASSOCIATES
COMMERCIAL REAL ESTATE SERVICES

3100 W. BURBANK BLVD., BURBANK, CA



TODD WUSCHNIG
PRINCIPAL
818.933.0301
twuschnig@lee-re.com
License ID #01367230

JENNIFER DONALDSON
PRINCIPAL
818.933.0347
jdonaldson@lee-re.com
License ID #01317737

LEE & ASSOCIATES
COMMERCIAL REAL ESTATE SERVICES