



FOR LEASE

FOURTH FLOOR

736 BROUGHTON STREET

VICTORIA, BC

**TOP FLOOR
OFFICE SPACE**



CONTACT INFORMATION:

COLLEEN AUSTIN
Personal Real Estate Corporation
Associate Vice President
Commercial Sales & Leasing
+1 250 410 3003
colleen.austin@cushwake.com

Suite 340 - 730 View Street
Victoria, BC V8W 3Y7
+1 250 410 3000
www.cushmanwakefield.ca

©2024 Cushman & Wakefield. All rights reserved. The information contained in this communication is strictly confidential. This information has been obtained from sources believed to be reliable but has not been verified. NO WARRANTY OR REPRESENTATION, EXPRESS OR IMPLIED, IS MADE AS TO THE CONDITION OF THE PROPERTY (OR PROPERTIES) REFERENCED HEREIN OR AS TO THE ACCURACY OR COMPLETENESS OF THE INFORMATION CONTAINED HEREIN, AND SAME IS SUBMITTED SUBJECT TO ERRORS, OMISSIONS, CHANGE OF PRICE, RENTAL OR OTHER CONDITIONS, WITHDRAWAL WITHOUT NOTICE, AND TO ANY SPECIAL LISTING CONDITIONS IMPOSED BY THE PROPERTY OWNER(S). ANY PROJECTIONS, OPINIONS OR ESTIMATES ARE SUBJECT TO UNCERTAINTY AND DO NOT SIGNIFY CURRENT OR FUTURE PROPERTY PERFORMANCE.

E.&O.E.: This communication is not intended to cause or induce breach of an existing agency agreement.

The information contained herein was obtained from sources which we deem reliable and, while thought to be correct, is not guaranteed by Cushman & Wakefield ULC (02/23/bg)

OPPORTUNITY

The Lindholm Building is situated in Victoria's downtown core located mid-block on Broughton Street between Douglas and Blanshard Streets with a major walkway extending the length of the downtown core, directly adjacent to the property. Buildings in the immediate vicinity include the Royal Theatre; Law Courts; CIBC, Royal Bank and TD Bank buildings; the Public Library; several large professional office buildings; a multitude of specialty retail shops, cafes, restaurants and a wide range of amenities all within easy walking distance.

This is a rare opportunity to lease a really well appointed, truly turn key office space with flexibility on term length.

UNIT SIZES

UNIT 402 - 1,377 Rentable SF

NET RENT

UNIT 402 - \$22.00 PSF

ADDITIONAL RENT

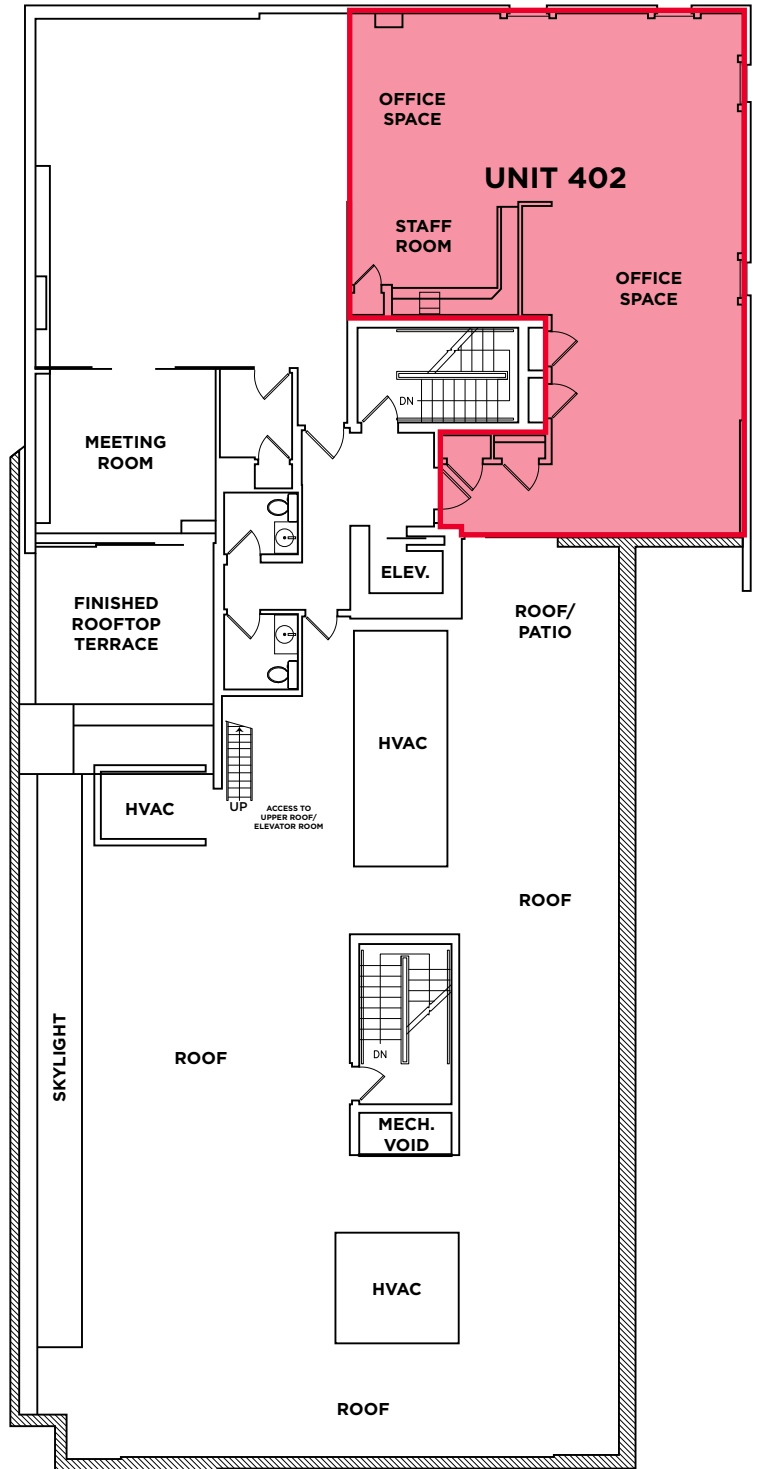
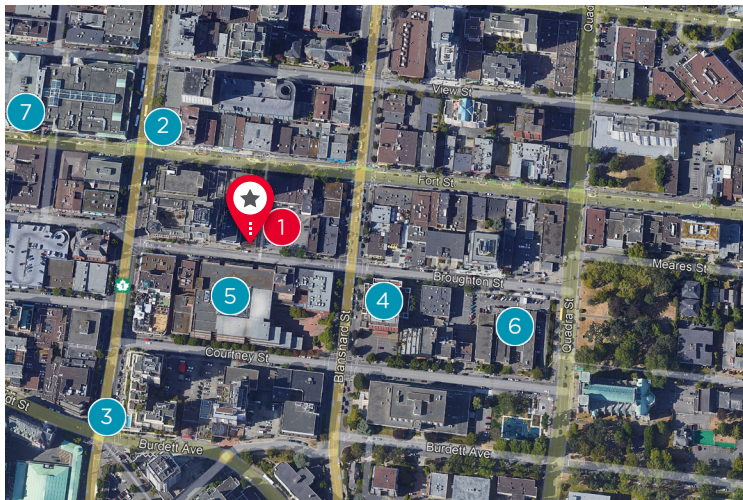
\$14.57 PSF

AVAILABILITY

Immediately

NEARBY AMENITIES

- | | |
|---|------------------------------------|
| 1. Public parking in the immediate vicinity | 4. The Royal Theatre |
| 2. Cactus Club Café | 5. Greater Victoria Public Library |
| 3. Browns Socialhouse | 6. The YMCA |
| | 7. GoodLife Fitness |



CONTACT INFORMATION:

COLLEEN AUSTIN

Personal Real Estate Corporation
Associate Vice President
Commercial Sales & Leasing
+1 250 410 3003
colleen.austin@cushwake.com

Suite 340 - 730 View Street
Victoria, BC V8W 3Y7
+1 250 410 3000
www.cushmanwakefield.ca

©2024 Cushman & Wakefield. All rights reserved. The information contained in this communication is strictly confidential. This information has been obtained from sources believed to be reliable but has not been verified. NO WARRANTY OR REPRESENTATION, EXPRESS OR IMPLIED, IS MADE AS TO THE CONDITION OF THE PROPERTY (OR PROPERTIES) REFERENCED HEREIN OR AS TO THE ACCURACY OR COMPLETENESS OF THE INFORMATION CONTAINED HEREIN, AND SAME IS SUBMITTED SUBJECT TO ERRORS, OMISSIONS, CHANGE OF PRICE, RENTAL OR OTHER CONDITIONS, WITHDRAWAL WITHOUT NOTICE, AND TO ANY SPECIAL LISTING CONDITIONS IMPOSED BY THE PROPERTY OWNER(S). ANY PROJECTIONS, OPINIONS OR ESTIMATES ARE SUBJECT TO UNCERTAINTY AND DO NOT SIGNIFY CURRENT OR FUTURE PROPERTY PERFORMANCE.

E.&O.E.: This communication is not intended to cause or induce breach of an existing agency agreement.

The information contained herein was obtained from sources which we deem reliable and, while thought to be correct, is not guaranteed by Cushman & Wakefield ULC (02/23/bg)