



Beautiful Lab/R&D Office Space

For lease

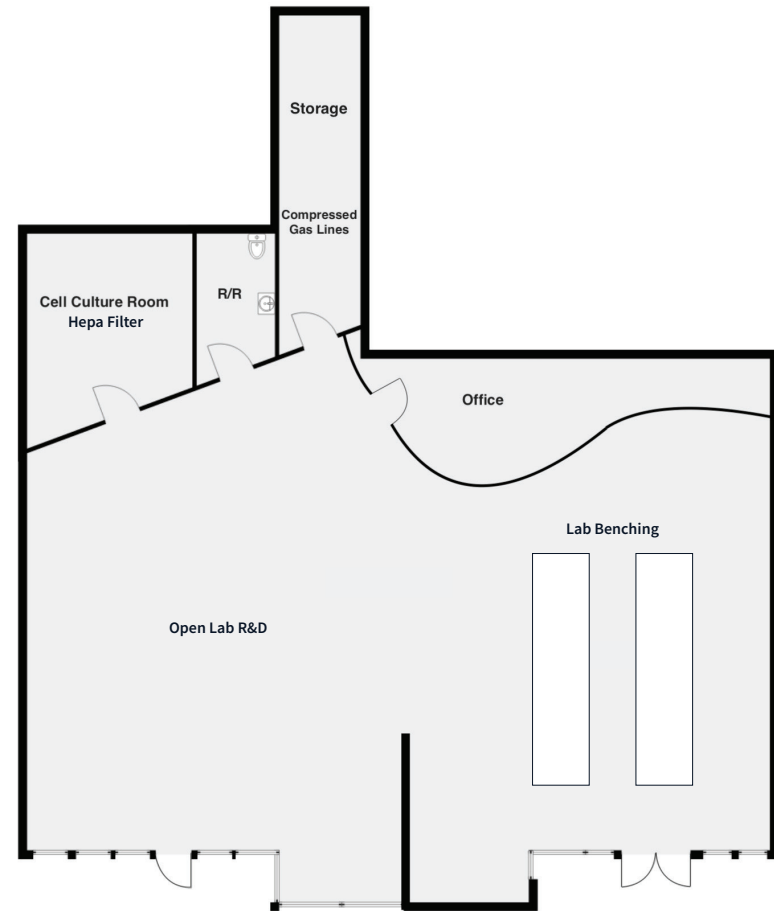
1125 Industrial Rd, Suite H, San Carlos, CA 94010
2,907 SF Available

 **JLL** SEE A BRIGHTER WAY

1125 Industrial Road

Amenities

- Lab / R&D open office layout with lab benches
- Extensive Window Line
- Large cell culture room with Hepa filter
- Compressed gas lines
- Polished concrete floors
- Backup power generator
- Power: 200 amps, 3 Phase
- Abundant parking 3/1,000
- Located immediately off 101, Holly & Brittan exits
- Adjacent to numerous restaurants (Starbucks, Chipotle, Falafel Tazah, Wing Stop, etc.)
- Very flexible zoning GCI: General Commercial & Industrial
- Zoning allows for R&D, Office, Warehouse, Retail, and Personal Service and more



Term

Flexible



Rate

\$3.95NNN



Square footage

2,907 SF



Availability

Now

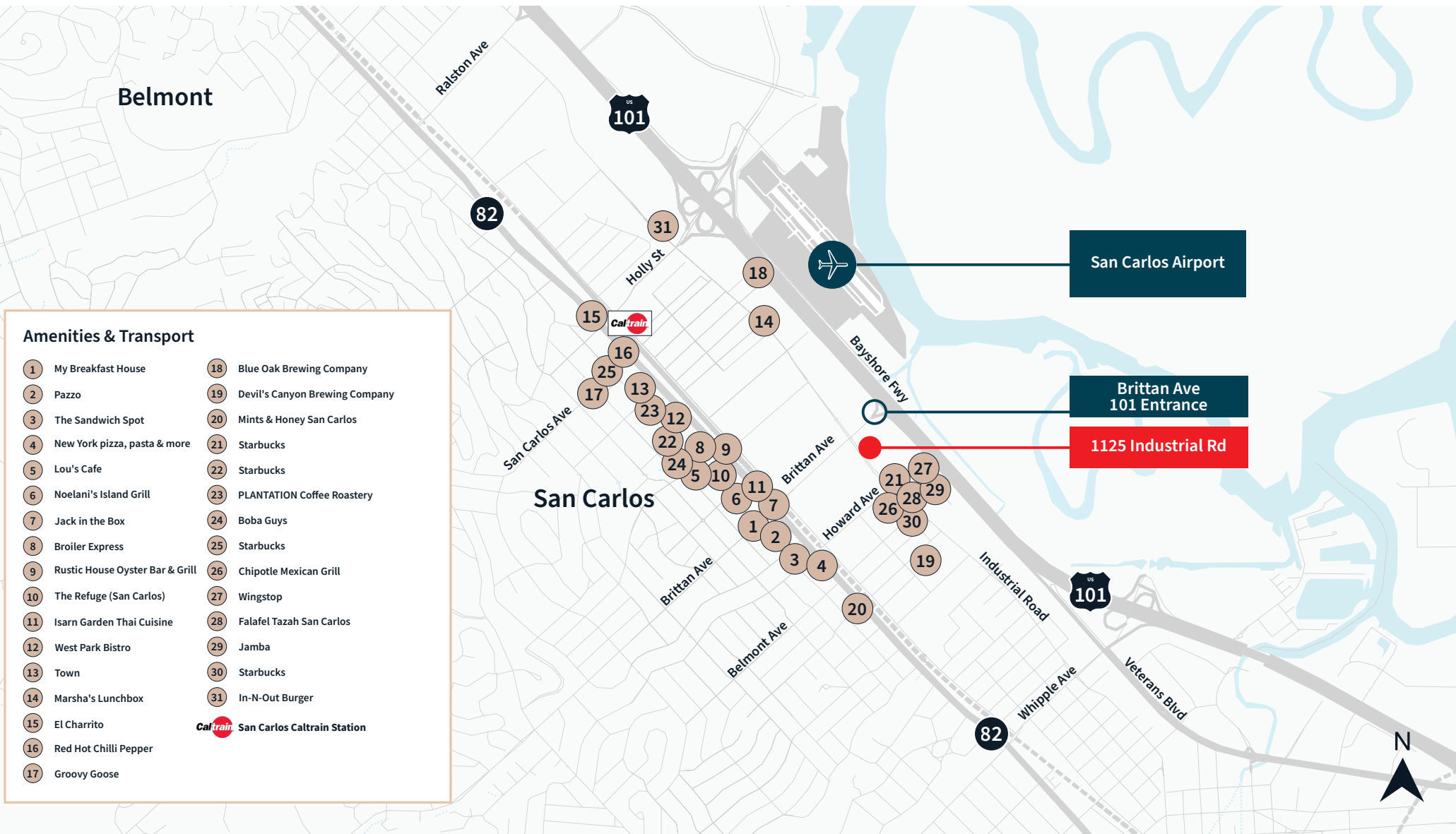


Listing type

Direct



Amenity map





JLL

Joey Alftin

Lic. 02086817

joey.alftin@jll.com

650-520-0324

Beto Santana Ruiz

Lic. 02222480

beto.santana@jll.com

385-250-7852



WP INVESTMENTS

Owner/Manager
2101 Woodside Road
Woodside, CA 94062
650-568-7300

www.wpinvestments.com

Although information has been obtained from sources deemed reliable, JLL does not make any guarantees, warranties or representations, express or implied, as to the completeness or accuracy as to the information contained herein. Any projections, opinions, assumptions or estimates used are for example only. There may be differences between projected and actual results, and those differences may be material. JLL does not accept any liability for any loss or damage suffered by any party resulting from reliance on this information. If the recipient of this information has signed a confidentiality agreement with JLL regarding this matter, this information is subject to the terms of that agreement. ©2026 Jones Lang LaSalle Brokerage, Inc. All rights reserved.