

FOR SUBLEASE

23669 EICHLER ST

BLDG 5, UNIT B, HAYWARD, CA



Warehouse Distribution Space in Hayward

±12,000 SF total area

±448 SF office

22' - 24' clear height

2 dock high doors, 1 drive-in door

Column spacing: 60' x 200'

Lease expires 12/31/2027

Occupancy with 30 days notice

Call broker for rental rate

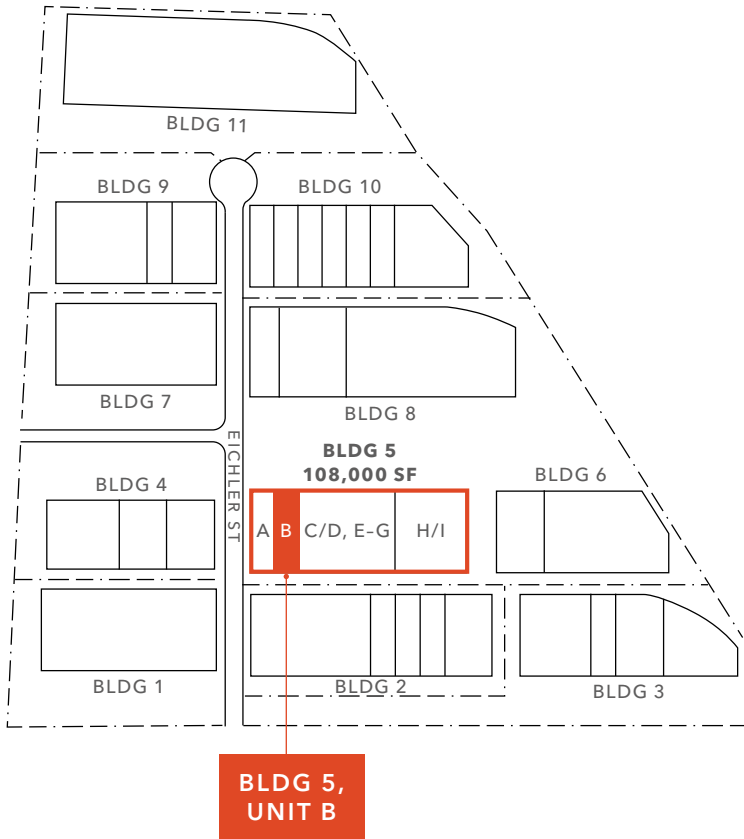
ALLEN VALDELLON
408.588.2312
allen.valdellon@kidder.com
LIC N° 01263899

KIDDER.COM

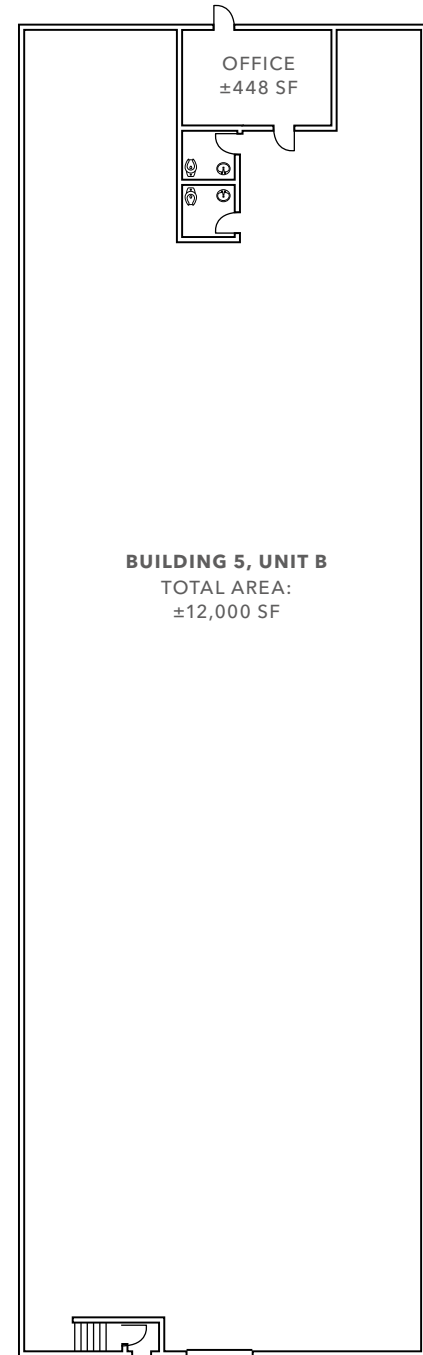
This information supplied herein is from sources we deem reliable. It is provided without any representation, warranty, or guarantee, expressed or implied as to its accuracy. Prospective Buyer or Tenant should conduct an independent investigation and verification of all matters deemed to be material, including, but not limited to, statements of income and expenses. Consult your attorney, accountant, or other professional advisor.

km Kidder
Mathews

SITE PLAN



FLOOR PLAN



ALLEN VALDELLON
408.588.2312
allen.valdellon@kidder.com
LIC N° 01263899

FLOOR PLAN NOT TO SCALE

KIDDER.COM

This information supplied herein is from sources we deem reliable. It is provided without any representation, warranty, or guarantee, expressed or implied as to its accuracy. Prospective Buyer or Tenant should conduct an independent investigation and verification of all matters deemed to be material, including, but not limited to, statements of income and expenses. Consult your attorney, accountant, or other professional advisor.





ALLEN VALDELLON
408.588.2312
allen.valdellon@kidder.com
LIC# 01263899

KIDDER.COM

This information supplied herein is from sources we deem reliable. It is provided without any representation, warranty, or guarantee, expressed or implied as to its accuracy. Prospective Buyer or Tenant should conduct an independent investigation and verification of all matters deemed to be material, including, but not limited to, statements of income and expenses. Consult your attorney, accountant, or other professional advisor.

