

295
MADISON
AVENUE



WORLD-CLASS OFFICE DESTINATION

OFFICE SPACES FOR LEASE (2,514 SQFT - 4,724 SQFT)

GRAND CENTRAL



MIDTOWN ICON

Rising 47 stories at the southeast corner of Madison Avenue and East 41st Street, 295 Madison Avenue offers reimagined, move-in-ready installations with generous natural light and stunning Madison Avenue views.

ELEVATED WORKPLACES

Tenants enjoy ultimate flexibility with suites available furnished or unfurnished, alongside landlord-provided bespoke build-outs tailored to their specific operational needs. The building experience is further elevated by a modernized, attended lobby, upgraded destination-dispatch elevators, and a commitment to sustainability evidenced by its LEED O&M certification.

CENTRAL ACCESS

Just a block from Grand Central Terminal, the building offers exceptional connectivity, transportation, and nearby parking facilities, with an abundance of dining, hotels, and fitness options in the surrounding neighborhood.

Trains 4, 5, 6, 7, S, B, D, F, M,
Metro-North, and LIRR

CENTRAL LOCATION





BUILDING OVERVIEW

A cultural icon for
the dynamic businesses.



BUILDING SQFT

407,127 SQFT Rentable

BUILDING HEIGHT

538 Feet | 47 Stories

BUILDING HOURS

24 Hour Access
Attended Lobby

AMENITIES

3rd Floor Amenity Center: Board Room,
Lounge, and Pantry.

RETAILERS IN THE BUILDING

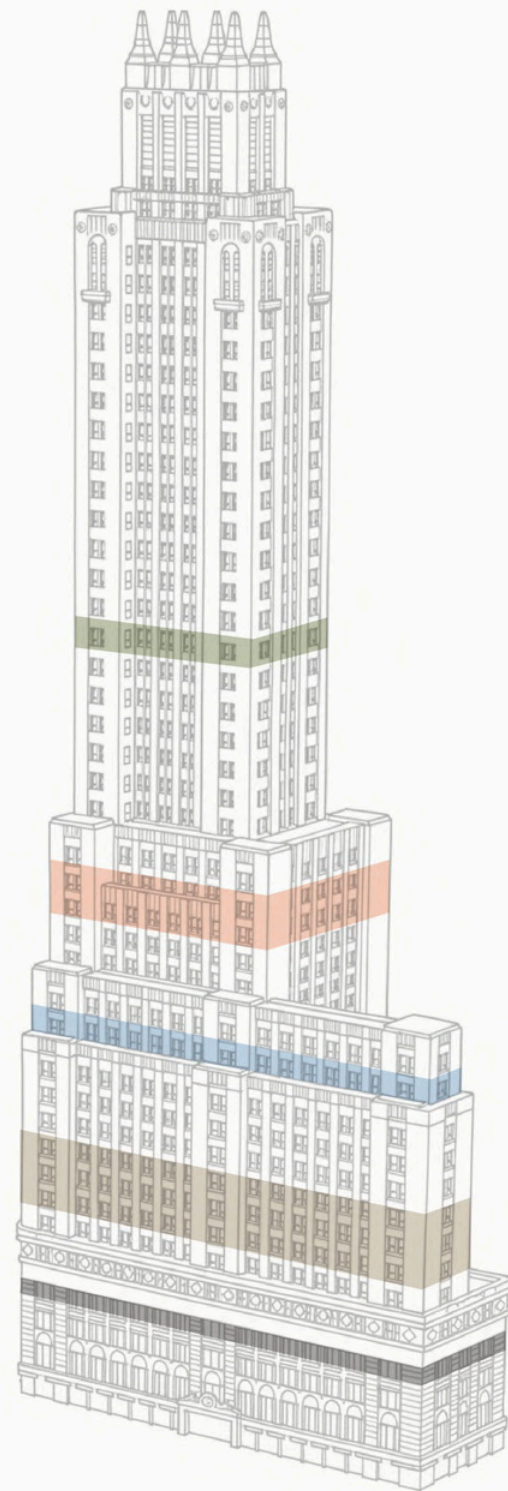
Barney Brown, Vivibowl,
Escape Game, Shogun

MIDTOWN ICON

Originally designed in the Art Deco style in 1929 by Charles F. Moyer, 295 Madison Avenue has since been transformed to blend modern design with a deep sensitivity to the neighborhood's historic fabric. The building offers state-of-the-art, move-in-ready office spaces featuring abundant natural light, flexible layouts, and panoramic views of Madison Avenue. Every suite can be fully customized, providing tenants with a refined, efficient, and prestigious workspace.



295
MADISON
AVENUE



27th Fl

8-10th Fl

AVAILABILITY

FLOOR	
SUITE 800A	4,724 RSF
SUITE 800B	2,518 RSF
SUITE 1008	2,514 RSF
SUITE 2700	3,900 RSF





295
MADISON
AVENUE

Suite 800A
4,724 RSF



295 MADISON AVENUE

VIRTUAL TOUR

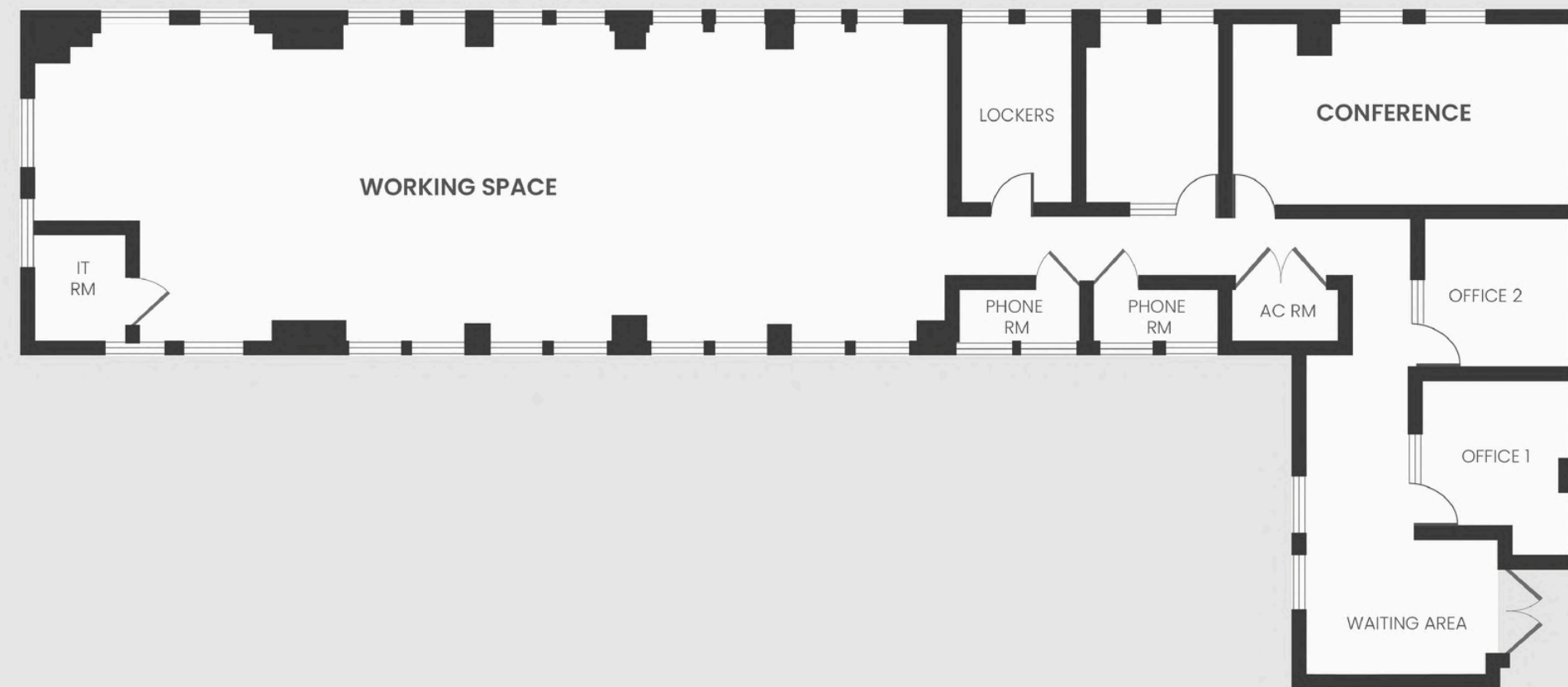
Suite 800A

SIZE

4,724 RSF

FEATURES

- 3 Offices
- 14 Person Conference Room
- 18 Workstations
- 2 Phone Rooms
- Pantry
- Reception





295
MADISON
AVENUE

Suite 800B
2,518 RSF



295
MADISON
AVENUE

Suite 800B

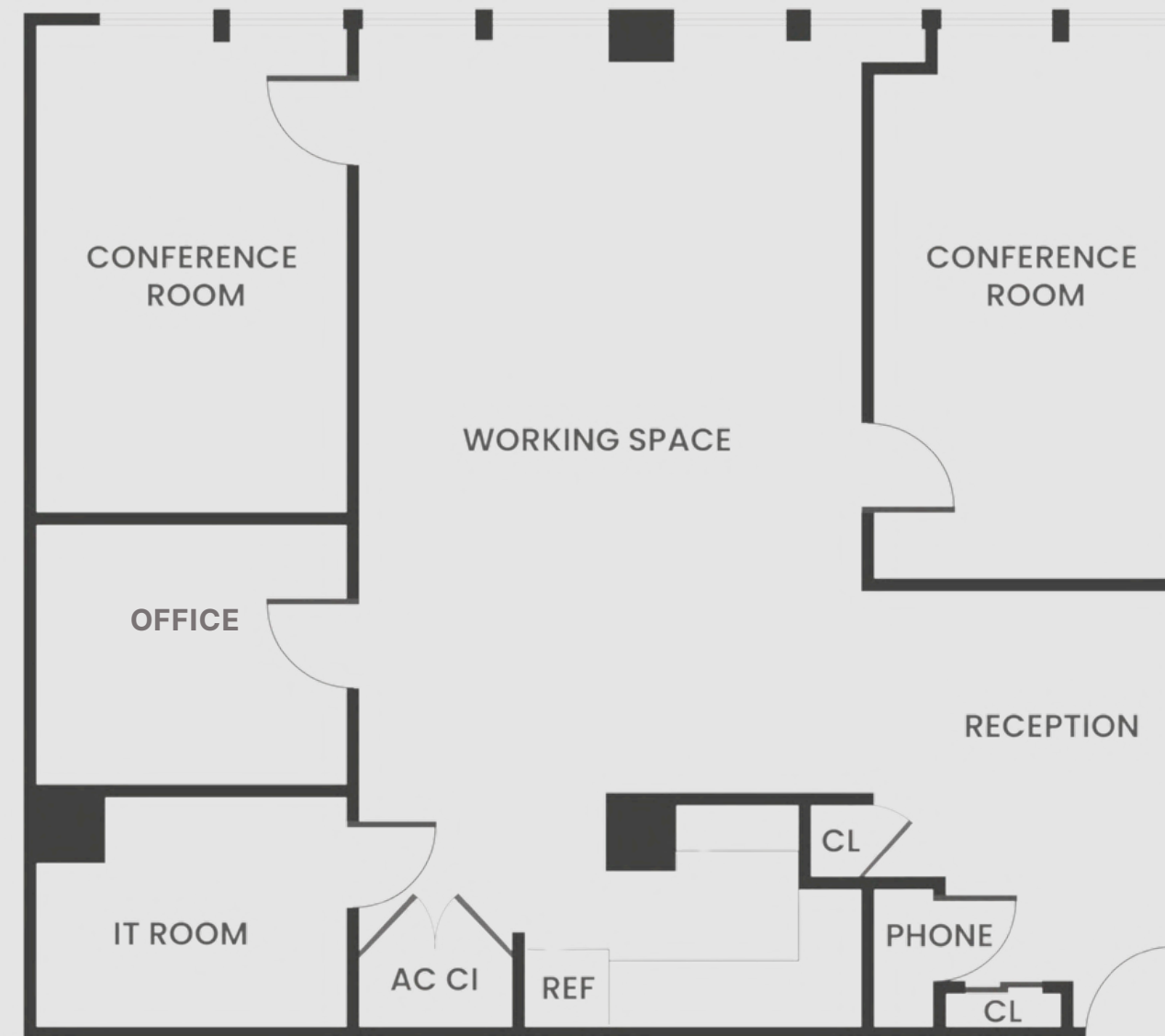
SIZE

2,518 RSF

FEATURES

- 1 Office
- 2 Conference Rooms
- 6 Workstations
- Reception

VIRTUAL TOUR



295
MADISON
AVENUE



Suite 1008

2,514 RSF



295
MADISON
AVENUE

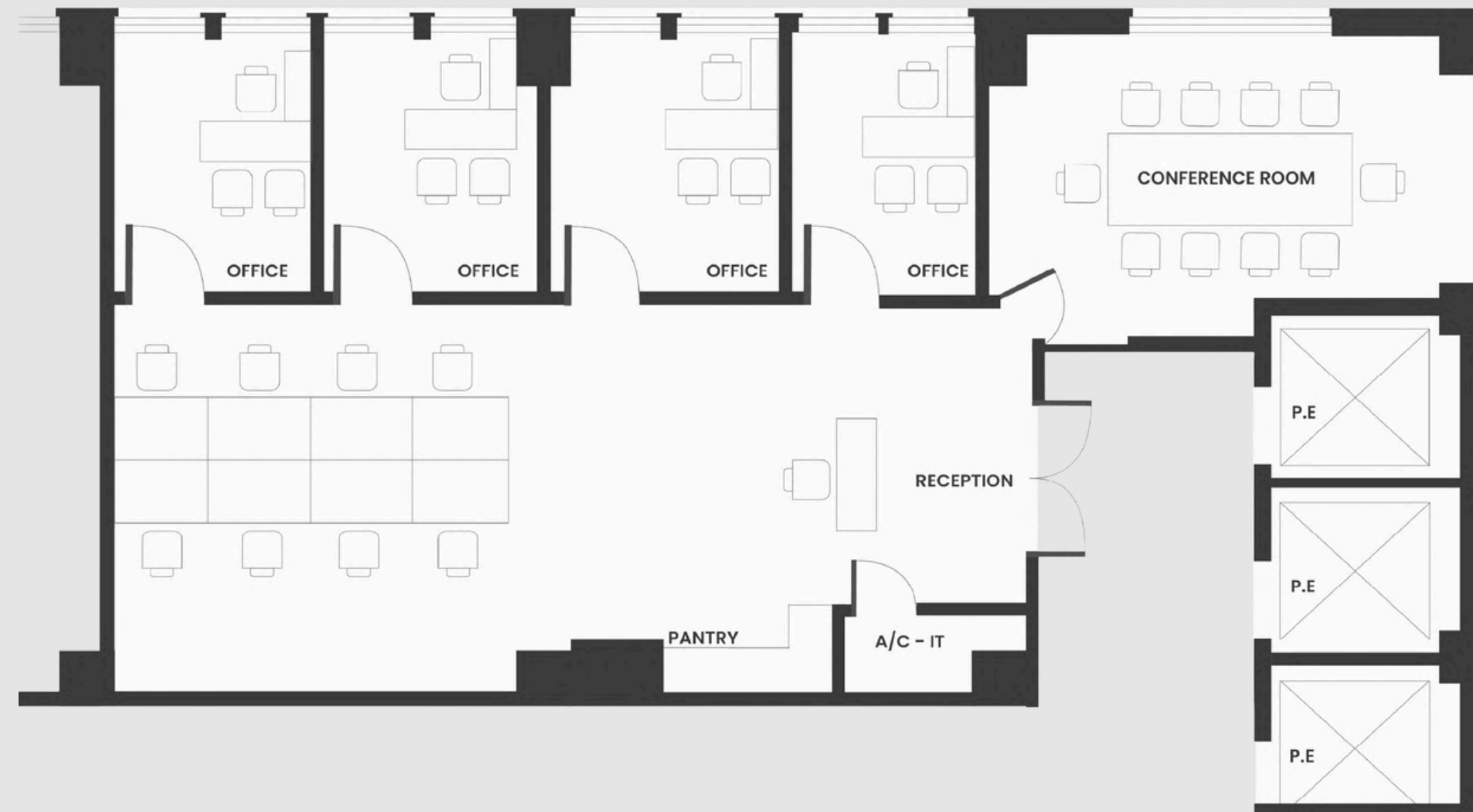
Suite 1008

SIZE

2,514 RSF

FEATURES

- 4 Offices
- 1 Conference Room
- 8 Workstations
- Pantry
- Reception



Proposed Plan



295
MADISON
AVENUE

Entire 27th Floor
3,900 RSF



295 MADISON AVENUE

VIRTUAL TOUR

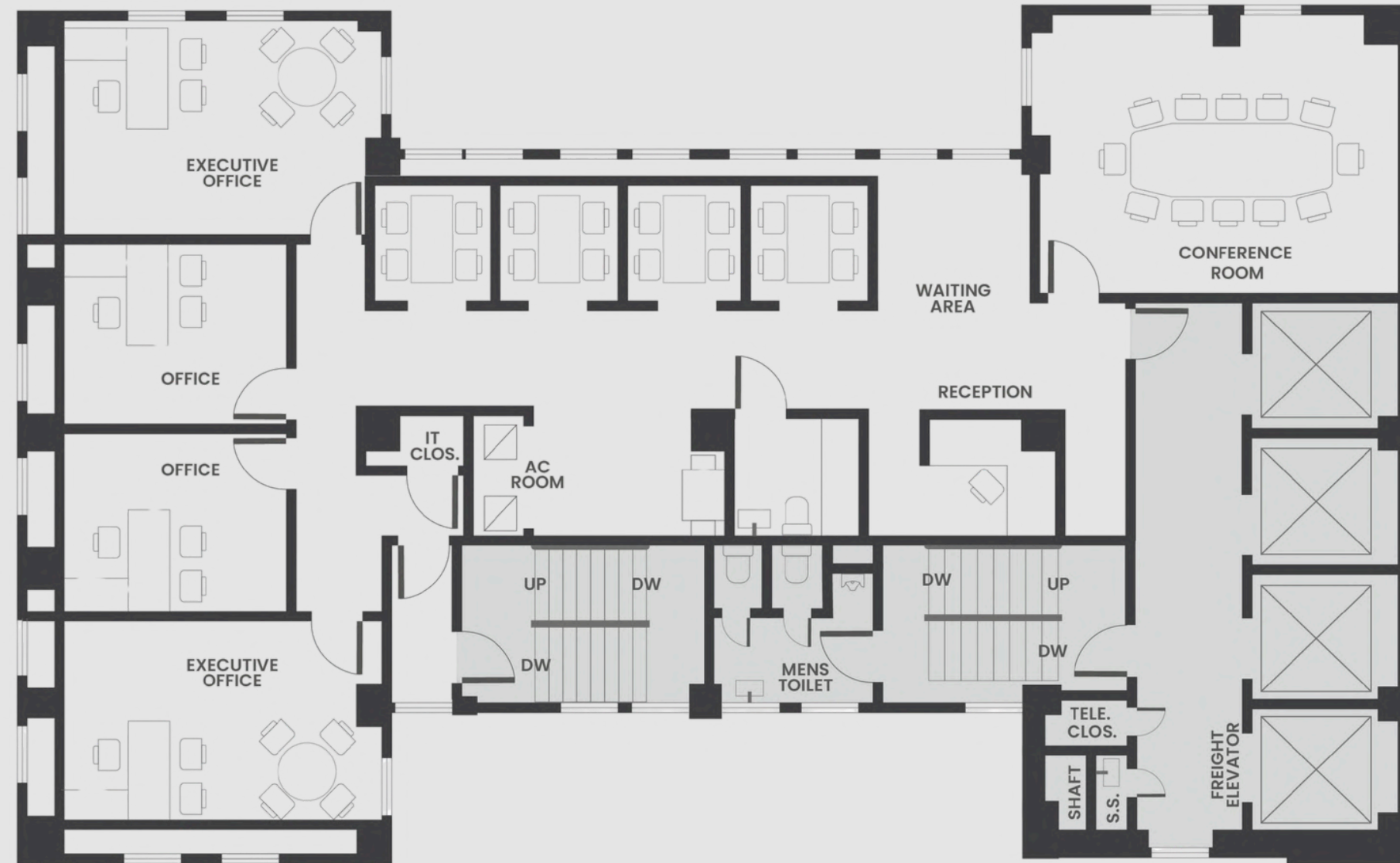
Entire 27th Floor

SIZE

3,900 RSF

FEATURES

- 4 Offices
- 1 Conference Room
- Reception
- Private Restroom
- Pantry





NEIGHBORHOOD

295 MADISON AVENUE



FINE DINING

- Bryant Park Grill
- Cipriani Dolci
- Le Pavillion
- Fasano
- Grand Brasserie
- Grand Central Oyster Bar

CASUAL DINING

- Cava
- Sweetgreen
- Los Tacos No.1
- Naya
- Shake Shack
- Chipotle

RETAIL

- Apple Store
- Adidas
- Charles Tyrwhitt
- Sephora
- Warby Parker
- Barnes & Noble

- Equinox
- Crunch Fitness
- Blink Fitness
- The Training Lab
- BNL Fitness



295 MADISON AVENUE

HEADQUARTERS

100 Wall Street, Second Floor
New York, NY 10005
www.platinumcommercialnyc.com

MIDTOWN OFFICE

295 Madison Avenue, 10th Floor
New York, NY 10017



Steven Evans
(646) 533-9589
sevans@pp-nyc.com



Emre Bozkurt
(518) 505-0518
ebozkurt@pp-nyc.com



Joseph Zalta
(718) 419-1112
jzalta@pp-nyc.com



Eric Meyer
(914) 391-4318
emeyer@pp-nyc.com

CONTACT

