

NEWLY RENAMED  
**EAST WEST BANK PLAZA**

HIGHLY VISIBLE OFFICE  
LOCATED ON  
**FIGUEROA AND 6TH**  
ONE OF  
**DTLA'S**  
MOST PROMINENT CORNERS

**888**

W.6TH STREET

LOS ANGELES, CA 90017

MOVE-IN READY SUITES AVAILABLE  
**FOR LEASE**





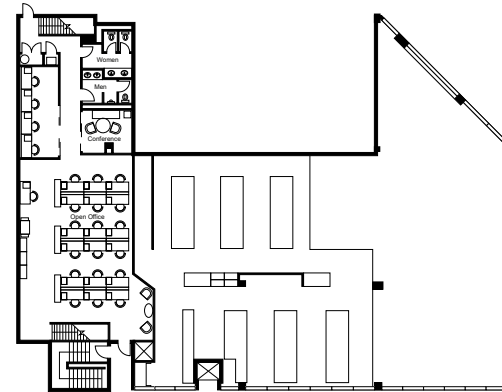
## PROPERTY HIGHLIGHTS



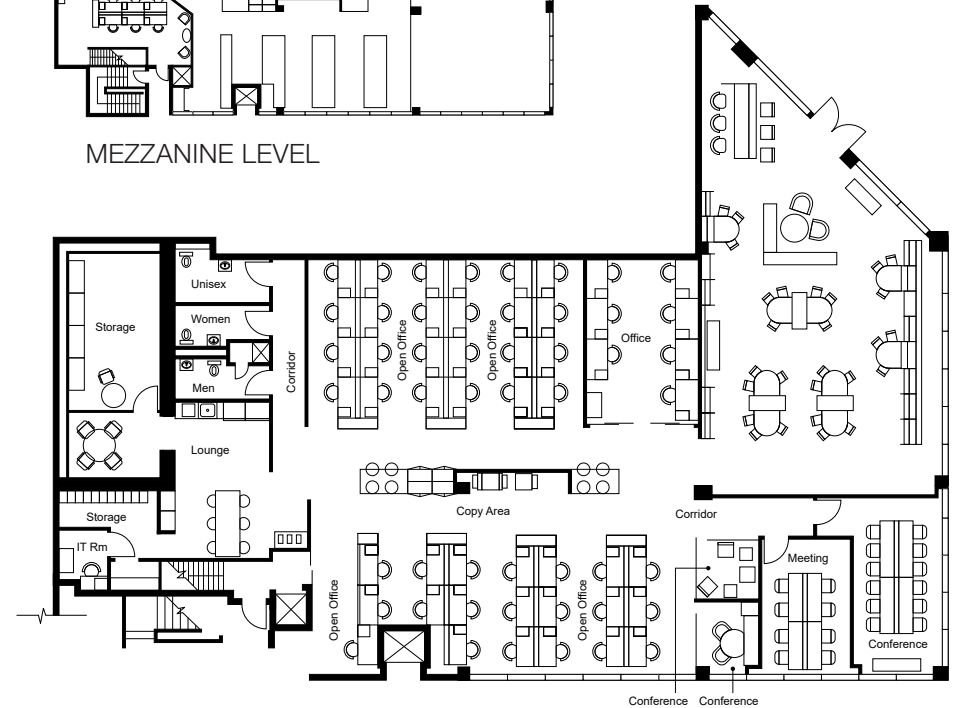
- \* **SINGLE TENANT FULL FLOORS AVAILABLE**
- \* **ASKING RATE: ~~\$3.50 FSG~~ \$3.15 FSG**
- \* **±6,400 SF FLOOR PLATES**
- \* **PRIVATE BALCONIES ON EVERY FLOOR**
- \* **±14 FT SLAB TO SLAB**
- \* **MONUMENT SIGNAGE AVAILABLE**
- \* **1.5/1,000 PARKING RATIO STARTING AT \$230/MONTH**



# GROUND FLOOR (RETAIL/CREATIVE OFFICE)



MEZZANINE LEVEL



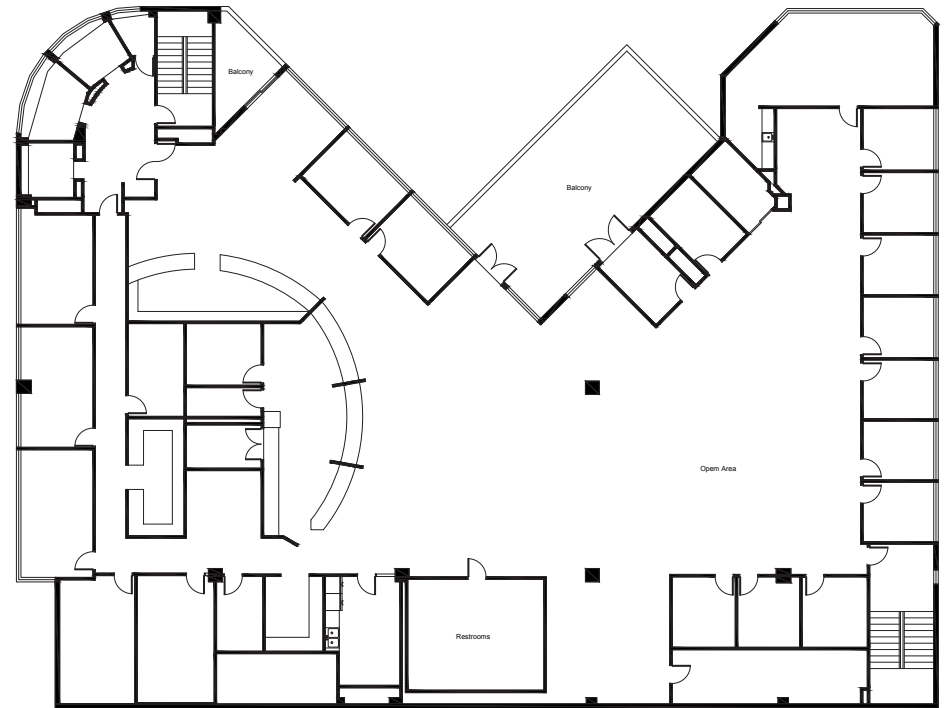
EXPANSIVE  
GROUND FLOOR  
CREATIVE SPACE

BALANCED LAYOUT  
WITH OPEN AREAS,  
PRIVATE OFFICES, AND  
CONFERENCE ROOMS

KITCHEN, STORAGE,  
PANTRY, SERVER ROOM,  
MEN'S & WOMEN'S  
RESTROOMS

APPROX. 8,700 SF

# 2ND FLOOR



  
**TWO PRIVATE  
BALCONIES,  
UNIQUE TO DTLA**

  
**MOVE-IN READY  
CREATIVE SPACE**

  
**PRIVATE OFFICES,  
CONFERENCE ROOMS,  
OPEN WORK AREA**

**APPROX. 14,045 SF**

# 3RD FLOOR



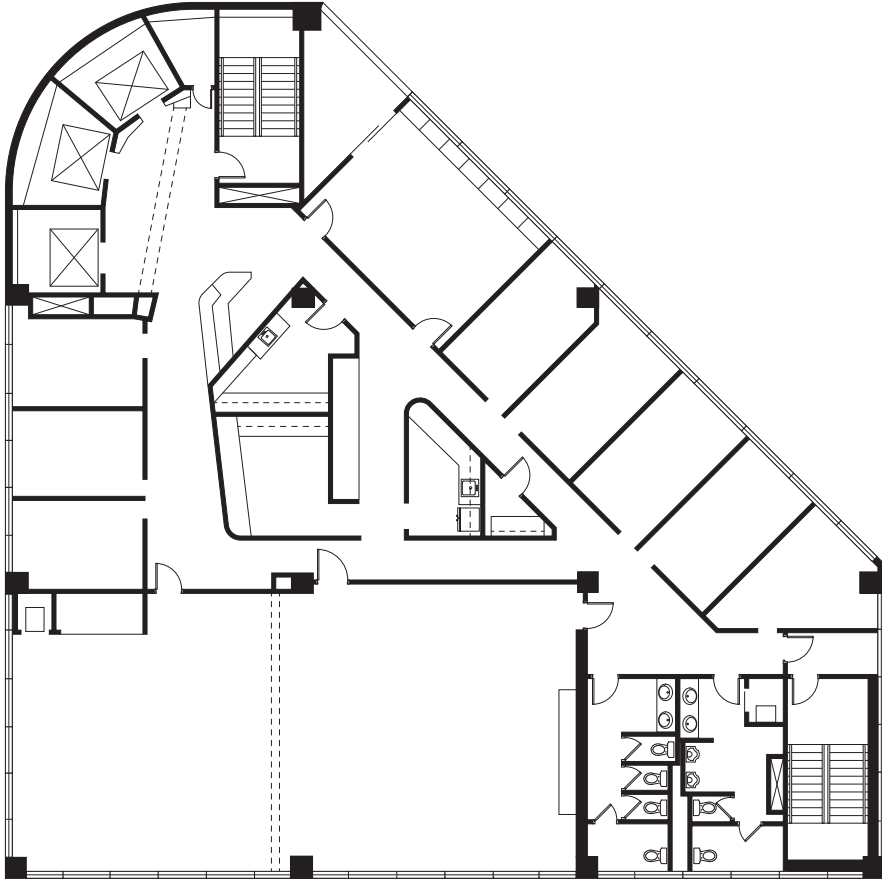
EXPANSIVE, PRIVATE  
OUTDOOR PATIO THAT  
WRAPS AROUND  
ENTIRE SUITE

MOVE-IN  
READY

MOSTLY OPEN  
LAYOUT

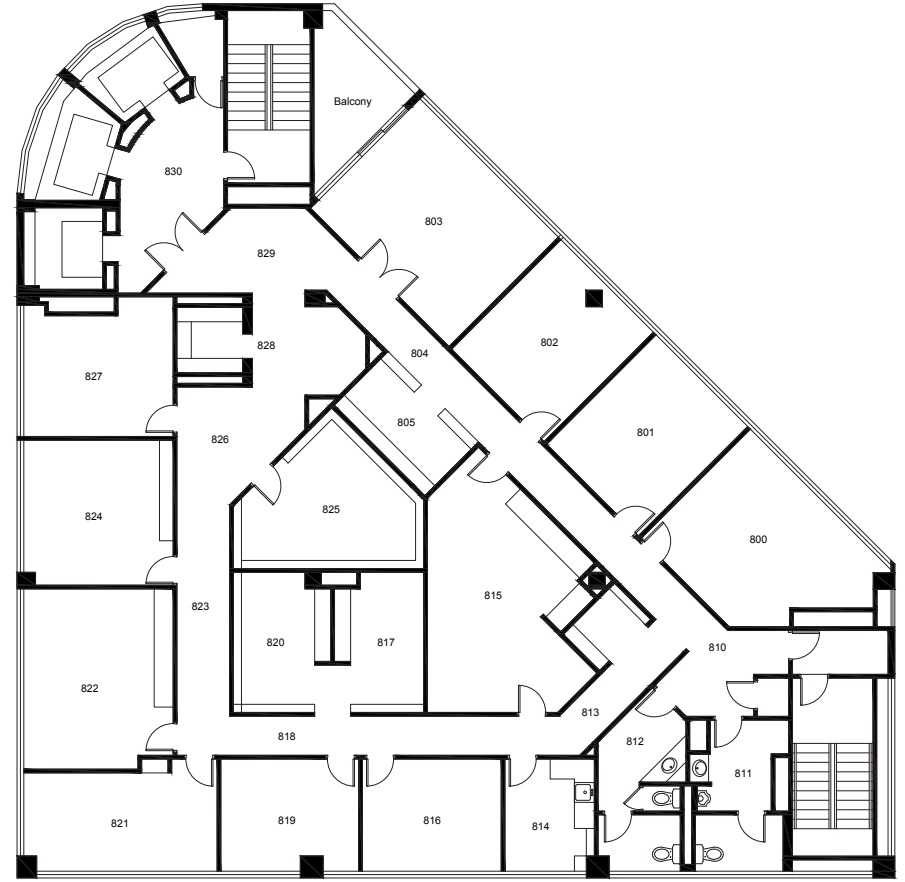
ABILITY TO  
EXPOSE HIGH  
CEILINGS

APPROX. 6,382 SF



**6TH  
FLOOR**

APPROX. 6,398 SF



**8TH  
FLOOR**

APPROX. 6,416 SF

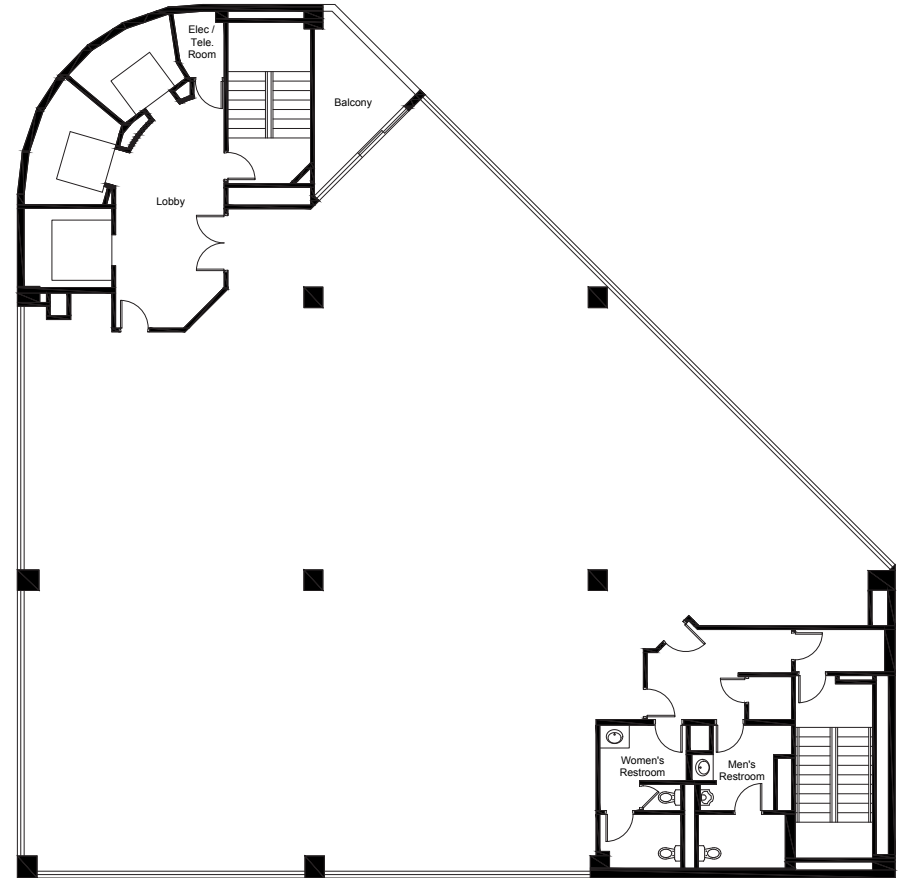
- \* MIX OF PRIVATE OFFICES AND CONFERENCE ROOMS PRIVATE BALCONY
- \* PRIVATE BALCONY
- \* AMPLE NATURAL LIGHT

- \* TRADITIONAL OFFICE SPACE
- \* PRIVATE BALCONY
- \* ABILITY TO DEMISE
- \* ABILITY TO EXPOSE HIGH CEILINGS



**9TH  
FLOOR**

APPROX. 6,398 SF

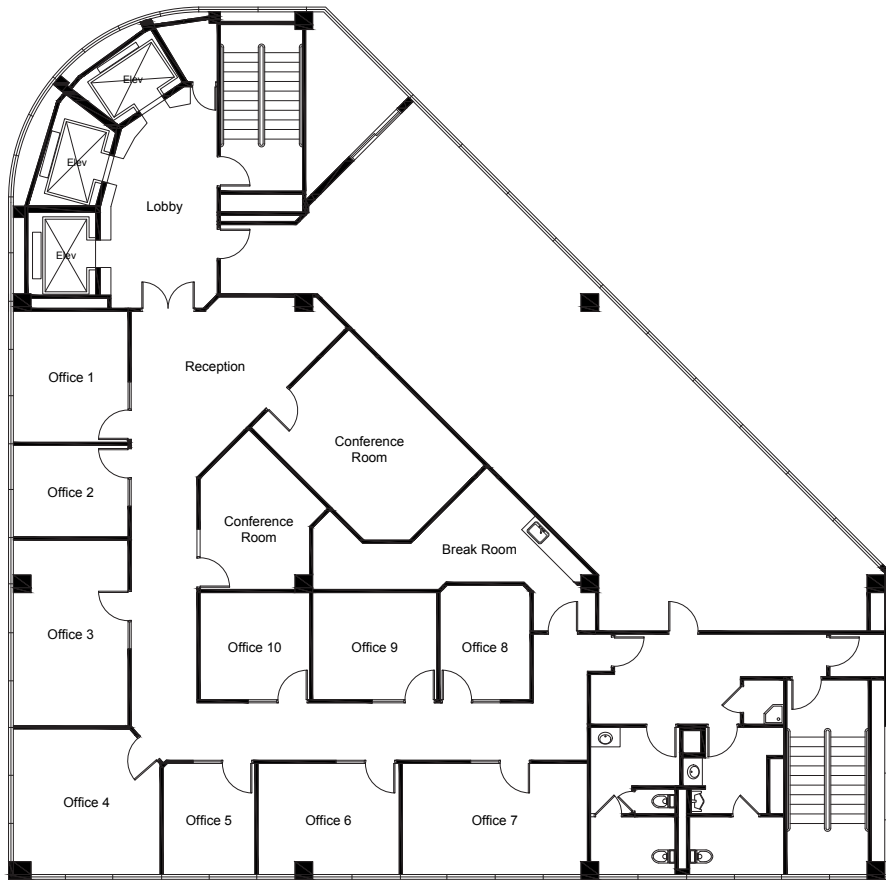


**10TH  
FLOOR**

APPROX. 6,413 SF

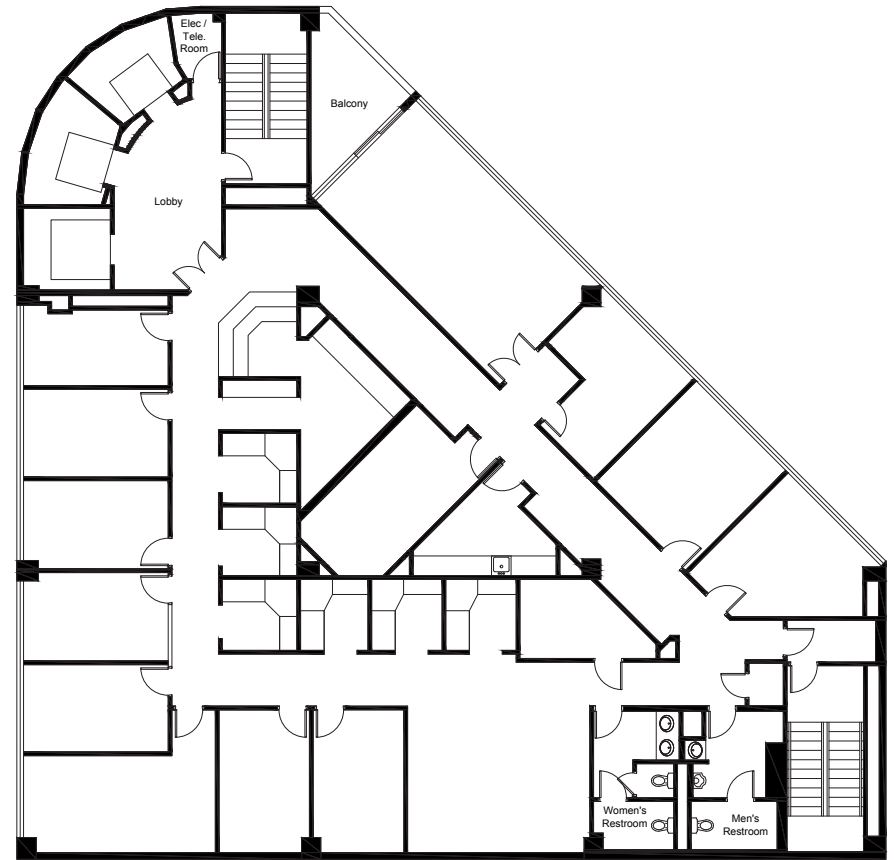
- ✦ TRADITIONAL OFFICE SPACE
- ✦ PRIVATE BALCONY
- ✦ ABILITY TO DEMISE
- ✦ ABILITY TO EXPOSE HIGH CEILINGS

- ✦ RAW SPACE
- ✦ PRIVATE BALCONY
- ✦ ABILITY TO DEMISE
- ✦ ABILITY TO EXPOSE HIGH CEILINGS



**11TH FLOOR**

APPROX. 4,387 SF

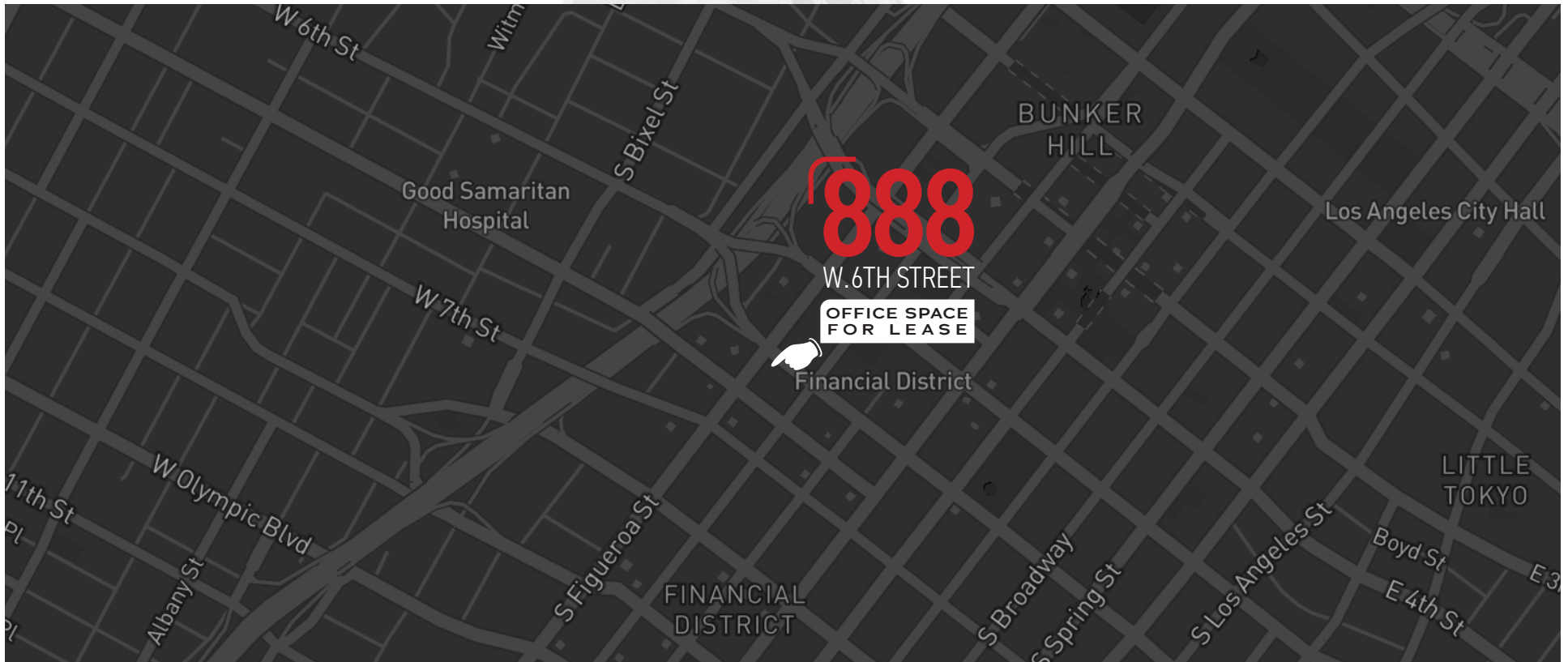


**14TH FLOOR**

APPROX. 6,412 SF

- ✧ PARTIAL FLOOR
- ✧ PRIVATE BALCONY
- ✧ SECOND GENERATION LAW FIRM SPACE
- ✧ MOVE-IN READY

- ✧ SECOND GENERATION LAW FIRM SPACE
- ✧ PRIVATE BALCONY
- ✧ ABILITY TO DEMISE
- ✧ ABILITY TO EXPOSE HIGH CEILINGS



## CONTACTS



### **Chris Caras**

Lic. 01229700  
+1 213 613 3303  
chris.caras@cbre.com

### **Phillip Sample**

Lic. 01145593  
+1 213 613 3301  
phillip.sample@cbre.com

### **Phil Hauspurg**

Lic. 02012230  
+1 310 550 2510  
phil.hauspurg@cbre.com

### **Brad Chelf**

Lic. 00874364  
+1 310 550 2582  
brad.chelf@cbre.com

---

© 2025 CBRE, Inc. All rights reserved. This information has been obtained from sources believed reliable, but has not been verified for accuracy or completeness. You should conduct a careful, independent investigation of the property and verify all information. Any reliance on this information is solely at your own risk. CBRE and the CBRE logo are service marks of CBRE, Inc. All other marks displayed on this document are the property of their respective owners, and the use of such logos does not imply any affiliation with or endorsement of CBRE. Photos herein are the property of their respective owners. Use of these images without the express written consent of the owner is prohibited.