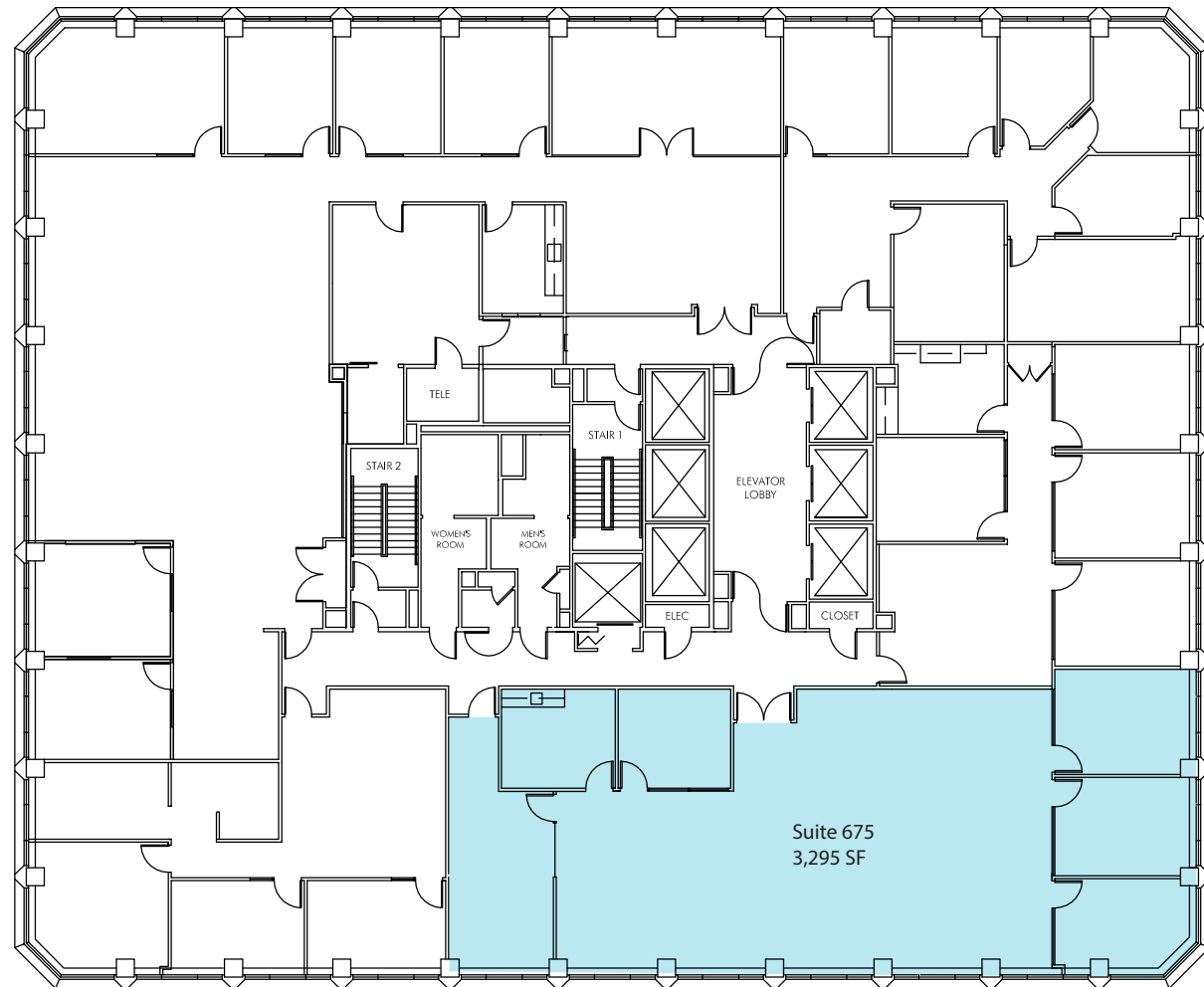


## SUITE 675 - 3,295 RSF

- 3 private offices
- 2 conference / flex rooms
- Efficient open area
- Corner suite
- Available now



MONTGOMERY STREET

CLAY STREET

**Kelly Glass**  
415.322.5062  
[kelly.glass@avisonyoung.com](mailto:kelly.glass@avisonyoung.com)  
RE Lic #01335179

**Colton Hanley**  
415.913.8699  
[colton.hanley@avisonyoung.com](mailto:colton.hanley@avisonyoung.com)  
RE Lic #02089768

**Elliot Ashkenazy**  
415 596 6886  
[elliott.ashkenazy@avisonyoung.com](mailto:elliott.ashkenazy@avisonyoung.com)  
Re Lic: 02280616

**AVISON  
YOUNG**