

FOR LEASE

588 SAN RAMON VALLEY BLVD

DANVILLE, CA 94526

±1,000 - ±6,546 RSF Available

YOUR NAME HERE

KIDDER.COM

km Kidder
Mathews



Property Highlights

Entire 2nd floor available (divisible to $\pm 1,000$ RSF)

Building & monument signage available

Ample parking for easy client & employee access

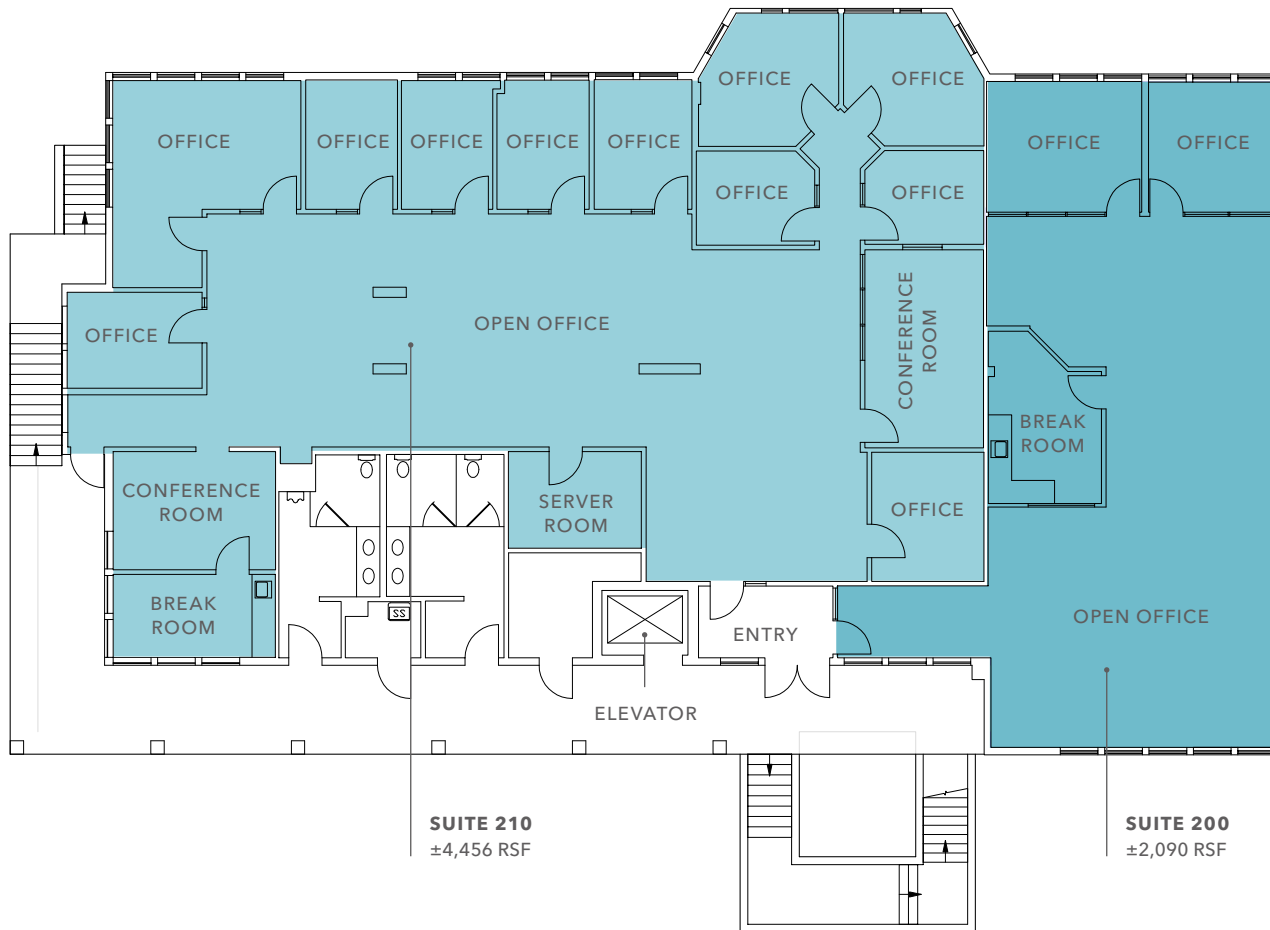
Immediate access to I-680 via Sycamore Valley Blvd & Diablo Road

Visibility from well trafficked San Ramon Valley Blvd ($\pm 7,000$ CPD)

Locally owned & managed by Sherman Properties



SECOND FLOOR



±6,546 RSF

TOTAL SPACE AVAILABLE

±2,090 RSF

SUITE 200

±4,456 RSF

SUITE 210

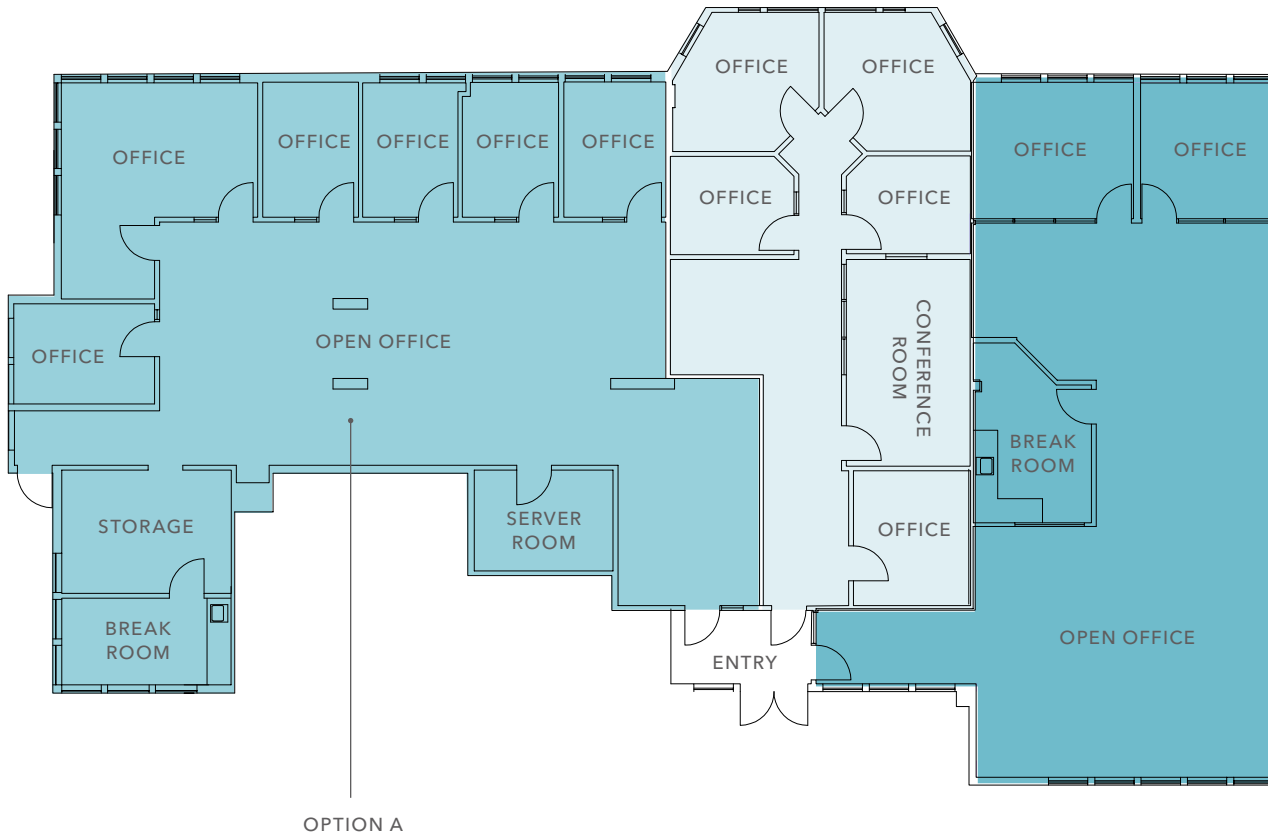
\$3.20 PSF

GROSS

FLOOR PLAN NOT TO SCALE

SECOND FLOOR

Hypothetical Demise Options



±2,706 RSF

OPTION A

±1,750 RSF

OPTION B

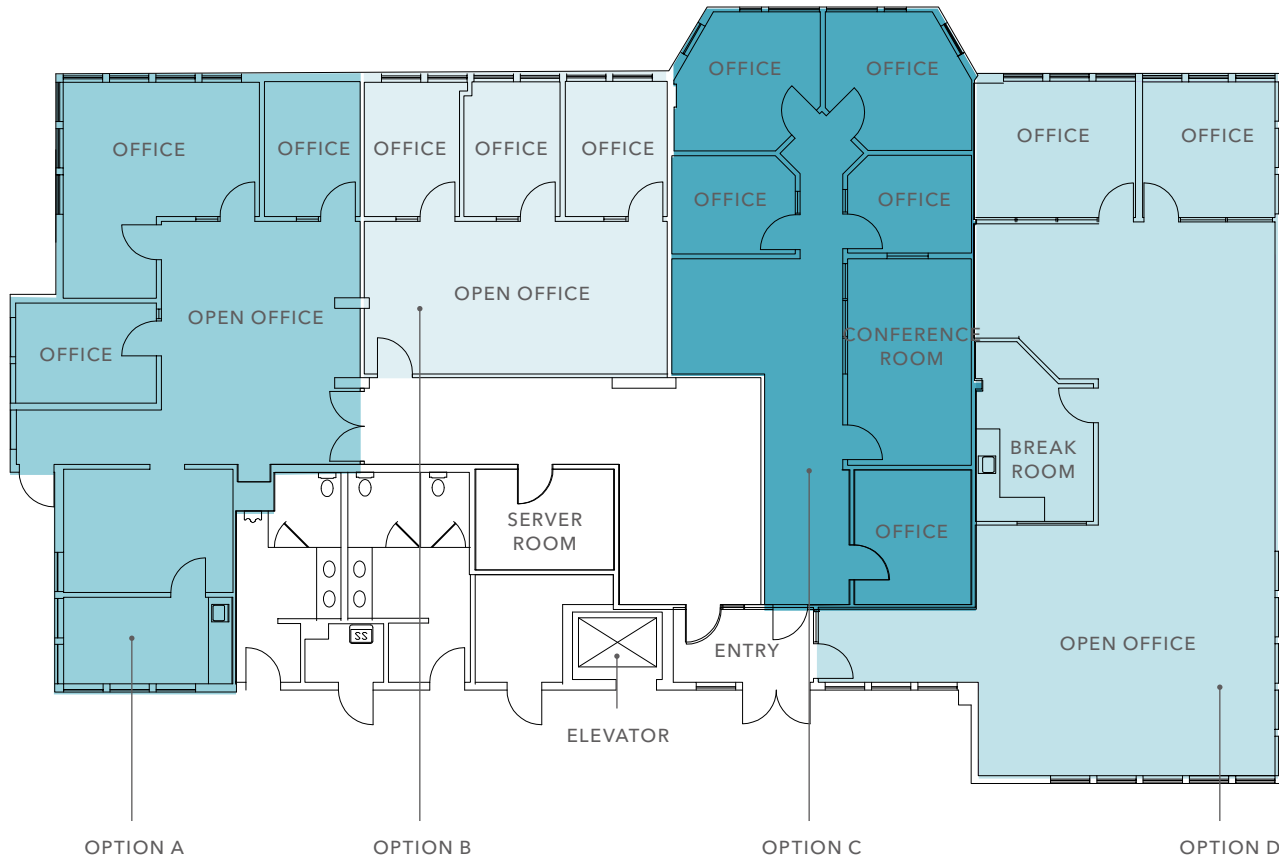
±2,090 RSF

OPTION C

FLOOR PLAN NOT TO SCALE

SUITE 210

Hypothetical Demise Options



±1,706 RSF

OPTION A

±1,000 RSF

OPTION B

±1,750 RSF

OPTION C

±2,090 RSF

OPTION D

FLOOR PLAN NOT TO SCALE

DANVILLE AMENITIES



LOCAL AMENITIES

- | | | | |
|----|-------------------------|----|-------------------------|
| 1 | Lucky | 17 | Albatross |
| 2 | CVS | | Cocina Hermanas |
| 3 | Walgreens | 18 | Danville Harvest |
| 4 | Tal's Patisserie | 19 | Bridges |
| | Acai & Bowls Cafe | 20 | Danville Brewing Co. |
| | Bagel Street Cafe | | The Peasant & The Pear |
| | Cold Stone Creamery | 21 | Incontro Ristorante |
| 5 | The Old Towne Bakery | 22 | Danville Chocolates |
| | Santorini Mediterranean | | Locando Ravello |
| | El Nido Mexican | 23 | Lottie's Creamery |
| 6 | The Growler | 24 | BevMo! |
| 7 | Akira Bistro | 25 | Starbucks Reserve |
| 8 | Sushi Yokohama | 26 | Hartz Cafe |
| 9 | Panda Express | | Norm's Place |
| 10 | Domino's | | Vally Medlyn's |
| | Medlene Coffee | 27 | Revel Kitchen & Bar |
| | Sultans Kebab | | Auburn Lounge |
| | Los Panchos Mexican | 28 | Koala Tea |
| 11 | Cielito Cocina Mexicana | 29 | Primo's Pizzeria & Pub |
| 12 | Crumbs | | Hazy Barbeque |
| 13 | Taco Bell | 30 | Vitality Bowls |
| 14 | Domenico's Delicatessen | | Foster's Freeze |
| 15 | Blue Line Pizza | 31 | Hen House Fried Chicken |
| 16 | Peet's Coffee | 32 | Starbucks |
| | Noah's NY Bagels | 33 | Chipotle |
| | Hopstone Farm & Craft | 34 | Sideboard |

588 SAN RAMON VALLEY BLVD

YOUR COMPANY'S NAME HERE
Ground Floor Space Available
925.899.9457

588

KIDDER.COM

This information supplied herein is from sources we deem reliable. It is provided without any representation, warranty, or guarantee, expressed or implied as to its accuracy. Prospective Buyer or Tenant should conduct an independent investigation and verification of all matters deemed to be material, including, but not limited to, statements of income and expenses. Consult your attorney, accountant, or other professional advisor. All Kidder Mathews designs are the sole property of Kidder Mathews. Branded materials and layouts are not authorized for use by any other firm or person.

 **Kidder
Mathews**