

CHRISTIANA CORPORATE CENTER

100
COMMERCE DRIVE
NEWARK, DE 19713



FOR LEASE
9,944 SF AVAILABLE

1st Floor - Suite 105 - 3,608 SF

2nd Floor - Suite 203 - 2,228 SF

3rd Floor - Suite 305 - 2,028 SF

3rd Floor - Suite 306 - 2,080 SF

WWW.CBRE.COM/100COMMERCE

CBRE

100 COMMERCE DRIVE

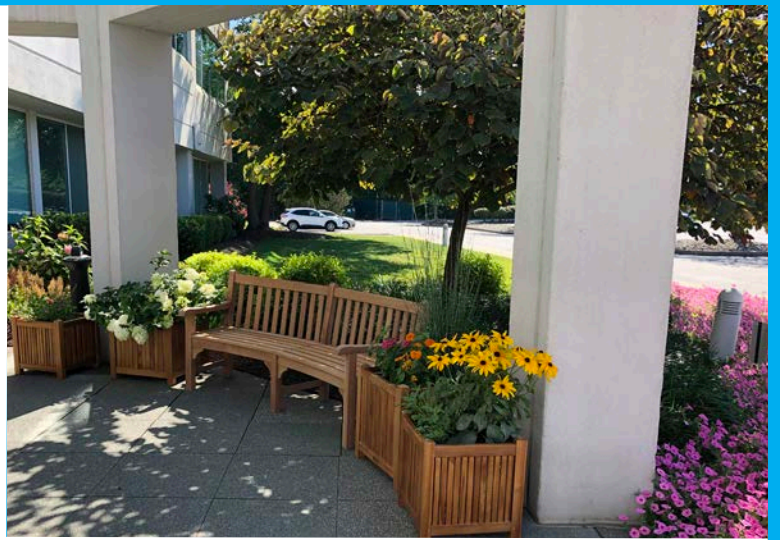


PROPERTY DETAILS

- **Class A property**
- **Owner: Old Town Hall Associates, LLC**
- **Rentable Square Feet: 62,787 SF**
- **Year Constructed: 1989**
- **Floors: 3**
- **Elevators: 2**
- **Parking: 300 surface spaces (4.80/1,000 SF)**
- **HVAC: Water source heat pump units**
- **Telecom Services: Comcast Fiber and Verizon Fiber**
- **3-story Class A office building**
- **Glass rooftop mezzanine**
- **9' ceiling heights**
- **Within close proximity of hotels and retail centers**
- **Visibility from I-95, 2 miles south from Route 273 exit**



**ATRIUM GRAB & GO WITH
COMPLIMENTARY EXPRESSO DRINKS
AND SUBSIDIZED SNACKS**



9' FINISHED CEILINGS
5' SPACING WINDOW MULLIONS



COMPLIMENTARY PARKING
300 SPACES



CHRISTIANA CORPORATE CENTER

FLOOR PLAN - 1ST FLOOR

1st Floor

Suite 105
3,608 SF



FLOOR PLAN - 2ND FLOOR

2nd Floor

Suite 203
2,228 SF



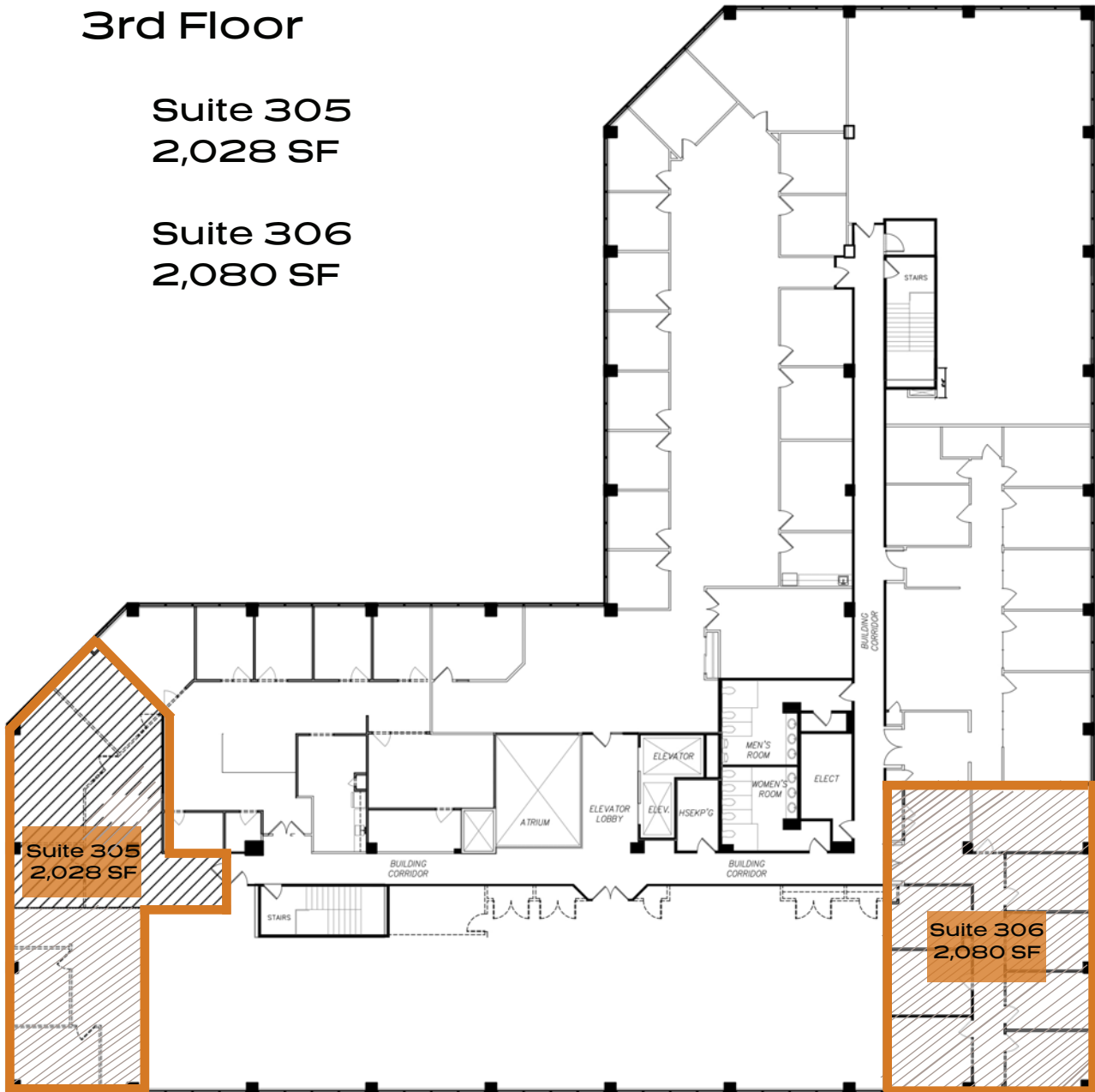
100 COMMERCE DRIVE

FLOOR PLAN - 3RD FLOOR

3rd Floor

Suite 305
2,028 SF

Suite 306
2,080 SF

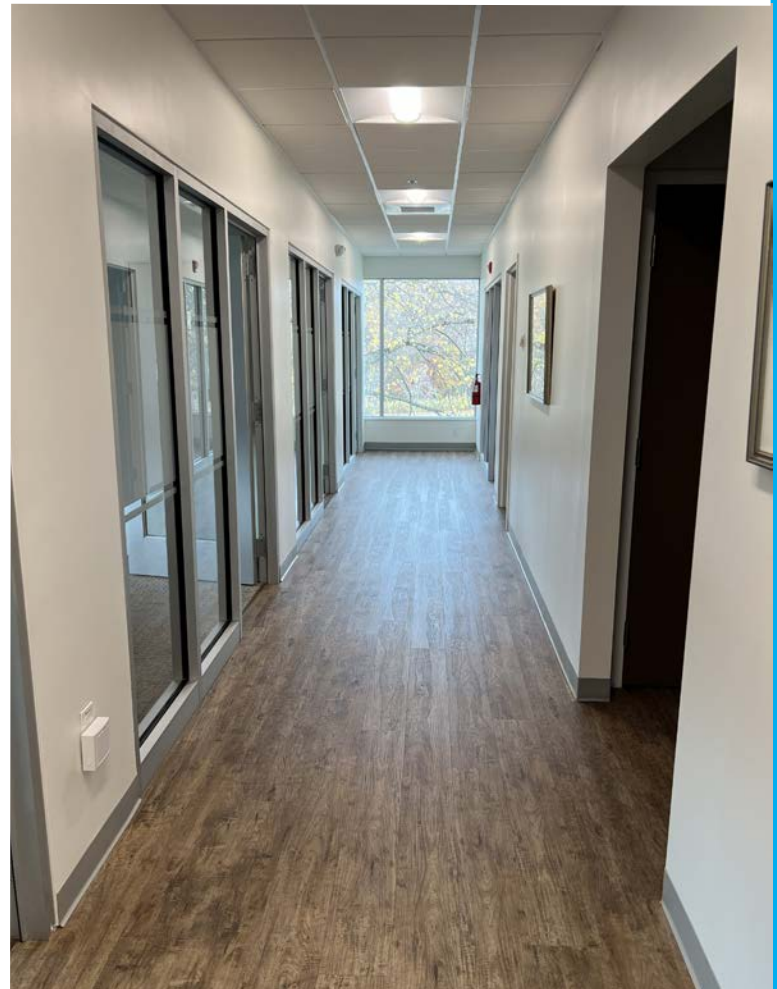


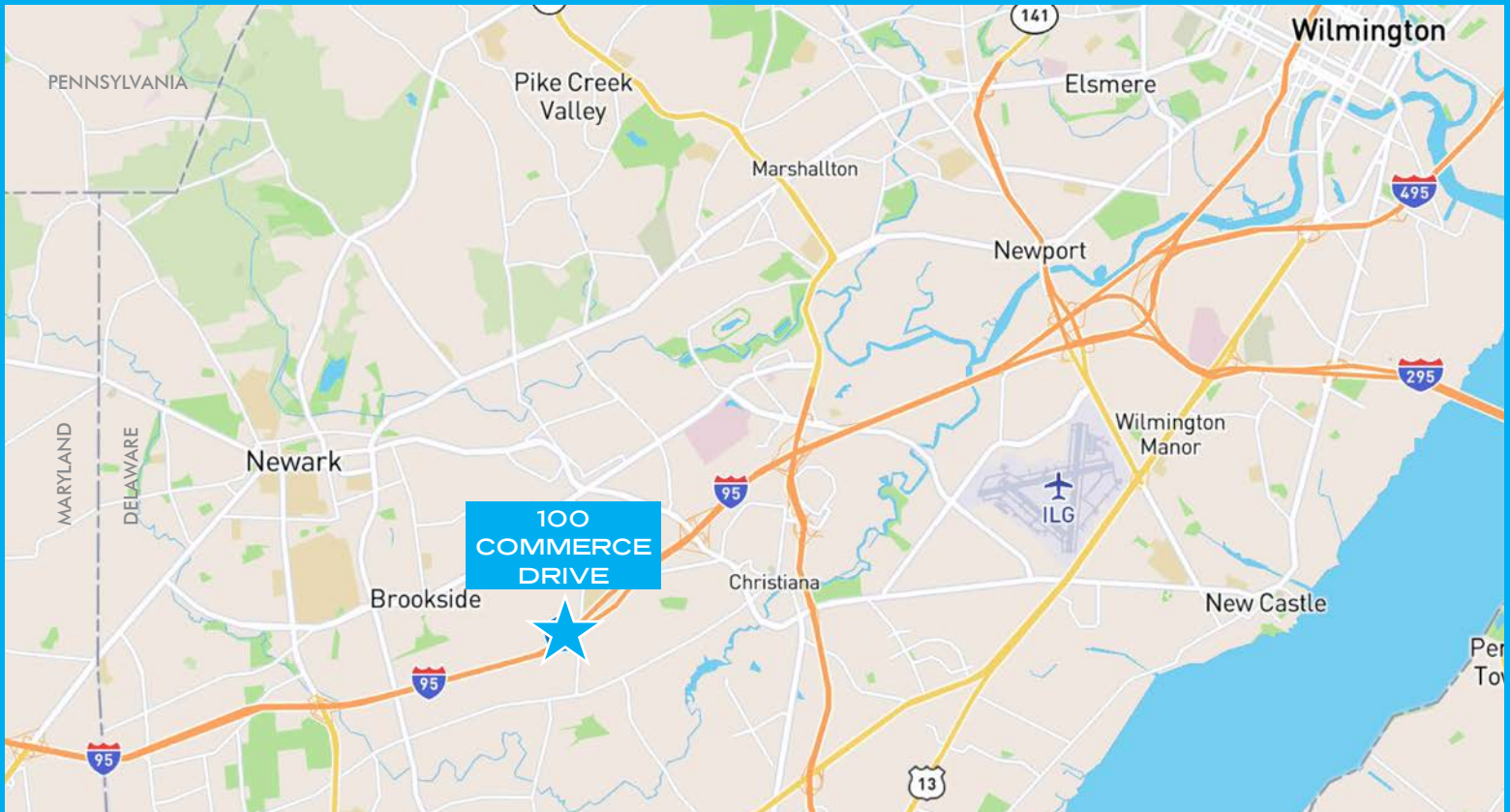
PLUG & PLAY
SUBLEASE
SPACE

100 COMMERCE DRIVE

PLUG & PLAY SUBLEASE SPACE

3RD FLOOR - SUITE 306
2,080 SF AVAILABLE





PROPERTY LOCATION

One of three buildings located in the Christiana Corporate Center, off Gender Drive in New Castle County, Delaware. The building is 15 minutes south of Wilmington, Delaware, 40 minutes from the Philadelphia International Airport, and 65 minutes from Baltimore, Maryland.

- Within 13 miles of the City of Wilmington
- Close proximity to the University of Delaware - 5 miles
- Adjacent to Comcast and AAA Midatlantic
- Visible from I-95

CHRISTIANA CORPORATE CENTER

100 COMMERCE DRIVE Newark, DE 19713



FOR MORE INFORMATION, CONTACT:

JOHN KACZOWKA
Senior Vice President
+1 302 661 6709
john.kaczowka@cbre.com
Licensed: DE, PA, MD

CBRE, INC.
3711 Kennett Pike, Suite 210
Wilmington, DE 19807
+1 302 661 6700
Licensed Real Estate Broker

WWW.CBRE.US/100COMMERCE

© 2025 CBRE, Inc. All rights reserved. This information has been obtained from sources believed reliable, but has not been verified for accuracy or completeness. You should conduct a careful, independent investigation of the property and verify all information. Any reliance on this information is solely at your own risk. CBRE and the CBRE logo are service marks of CBRE, Inc. All other marks displayed on this document are the property of their respective owners. Photos herein are the property of their respective owners. Use of these images without the express written consent of the owner is prohibited.