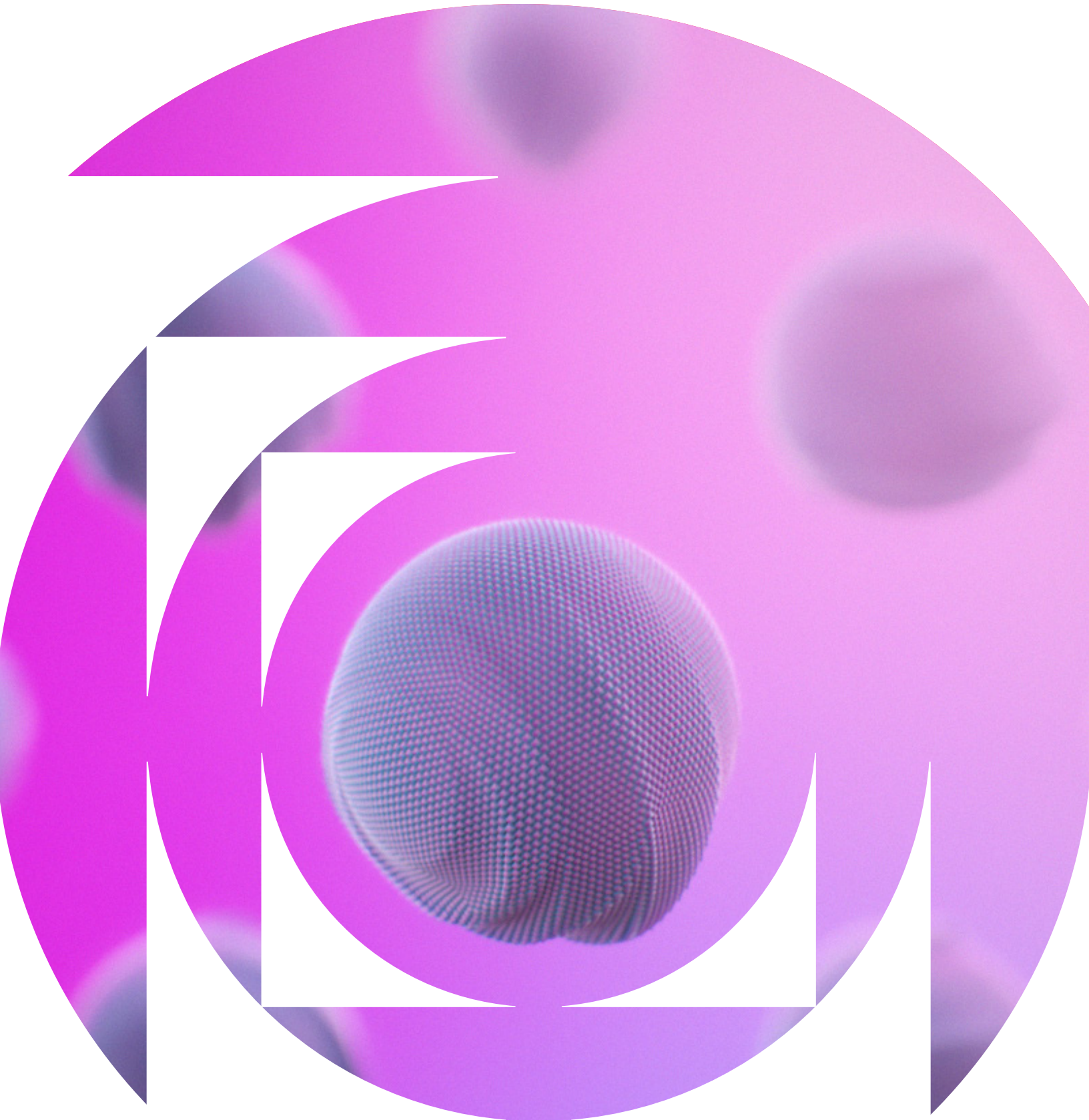


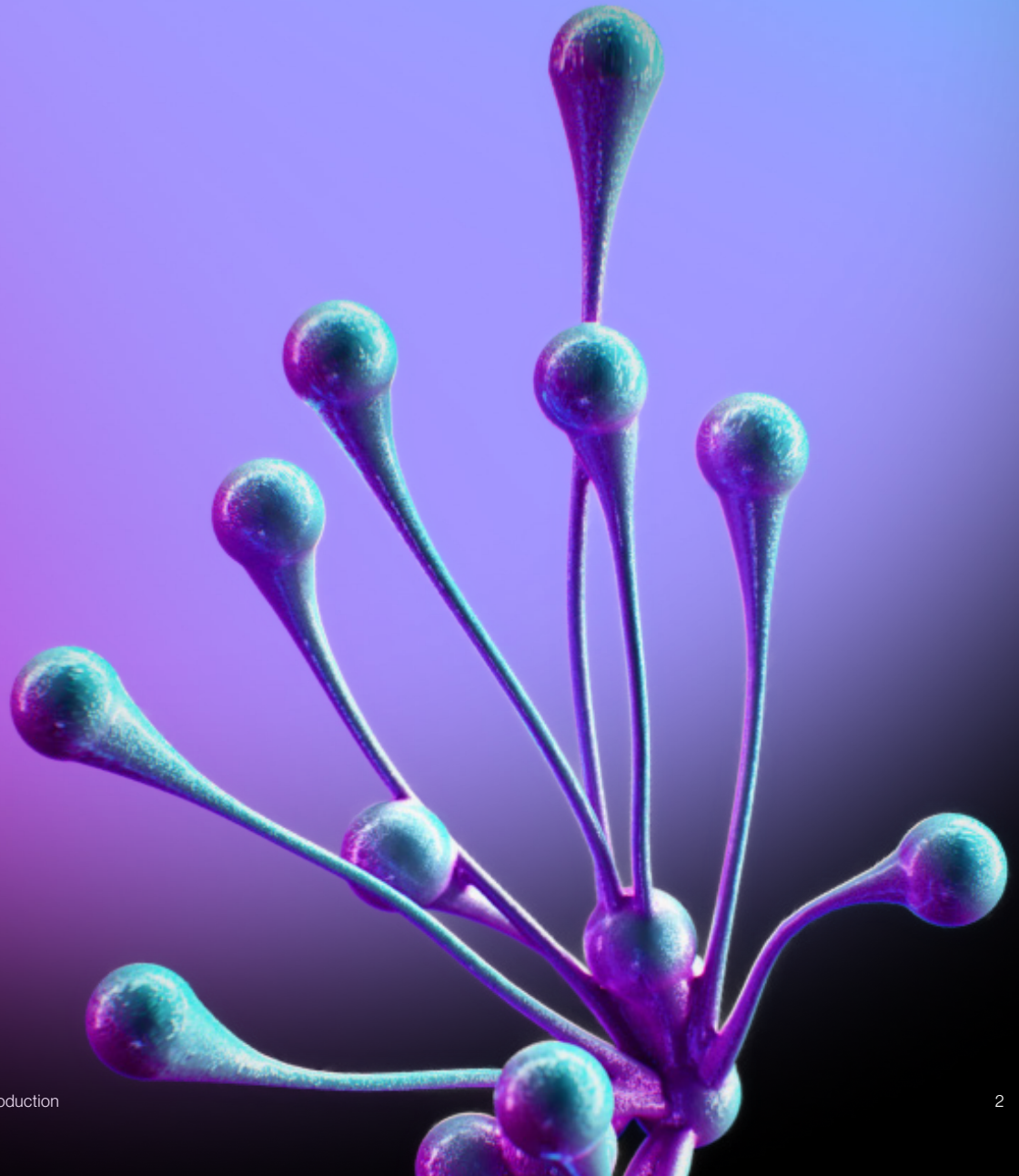


theLAB Berkeley  
Where science takes shape



# Inspiring spaces. Inspiring discovery.

An amalgamation of past and future, theLAB Berkeley presents a campus that's as inviting as it is elemental. With cutting-edge amenities and blank-slate lab spaces, your team has ample room to discover and break boundaries.





Buildings

- 1**

**Building 1**  
42,871 Sq. Feet
- 2**

**Building 2**  
7,957 Sq. Feet
- 3**

**Building 3**  
36,331 Sq. Feet
- 4**

**Building 4**  
31,044 Sq. Feet
- 5**

**Building 5**  
174,774 Sq. Feet

Amenities

- 6**

**CollaborativeLAB**
- 7**

**FitnessLAB**
- 8**

**AmphitheaterLAB**
- 9**

**PresentationLAB**
- 10**

**The Berm**
- 11**

**Multi level Structured Parking**
- 12**

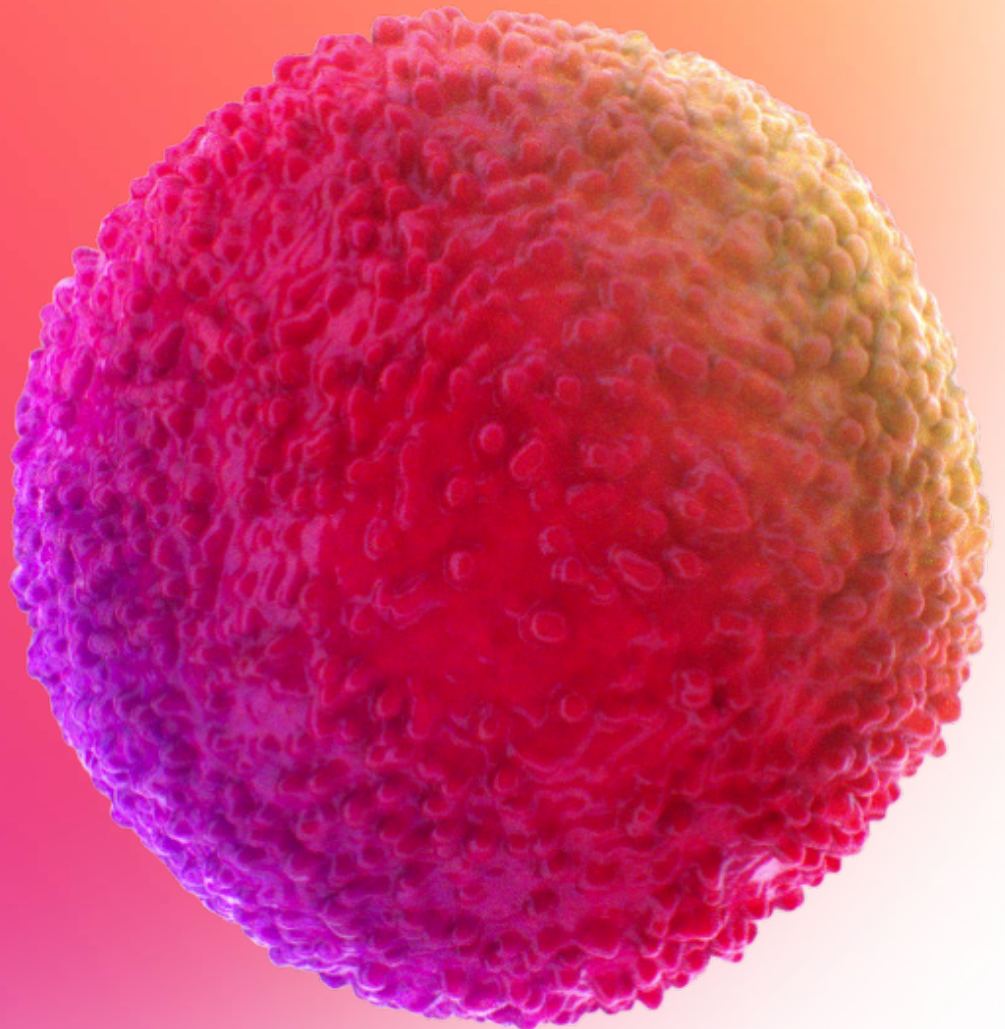
**Secured Surface Parking**
- 13**

**Shade Lounge**
- 14**

**Surface Parking**

# Breakthroughs happen here

At theLAB Berkeley, reclaimed exterior patina meets striking modern office interiors. Work-life balance is never out of reach, with contemporary on-campus amenities and an unbeatable location near boutique shopping, dining, and top-flight research facilities.



# Building 4

1960's Vintage character meets a contemporary & edgy renovation offering natural light and visual indoor-outdoor connections with a plaza to the south.

Total 31,044 Sq. Feet



All New Building MEP Systems Including Emergency Backup Generator

Dedicated TC or Lab Support Rooms

2,000 AMPS, 277/480 Volts, 3 Phase Power

Efficient and Flexible Lab Design with Portable Casework

Prominent building and monument signage available

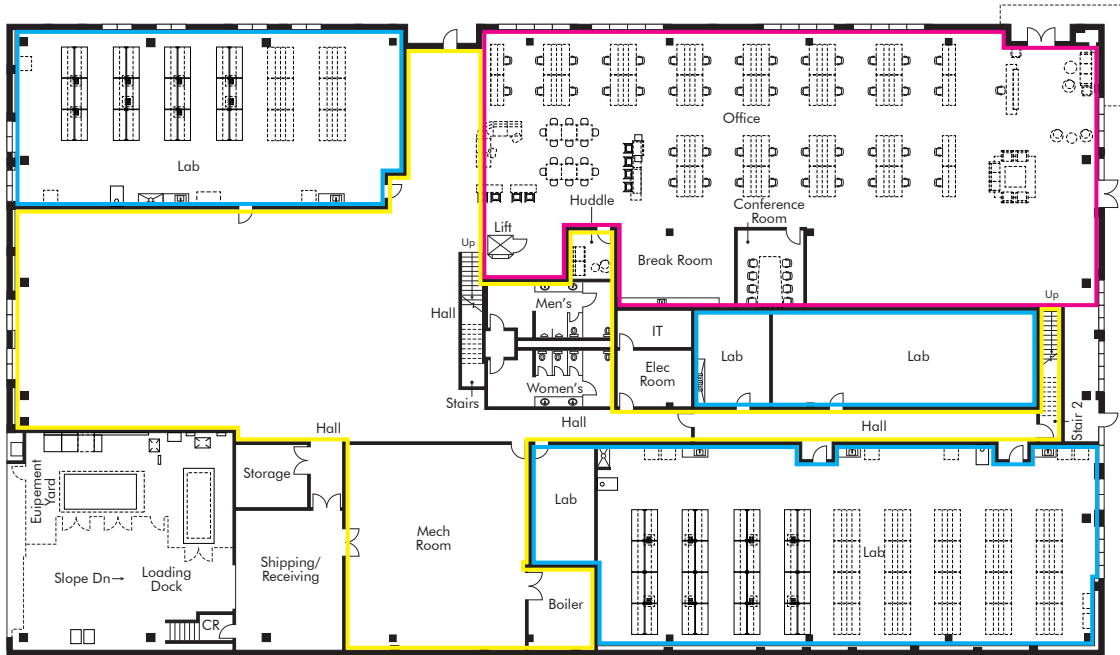
Immediate I-80 freeway access, both to Oakland and San Francisco

Walkable to Berkeley's 4th Street shopping and dining district

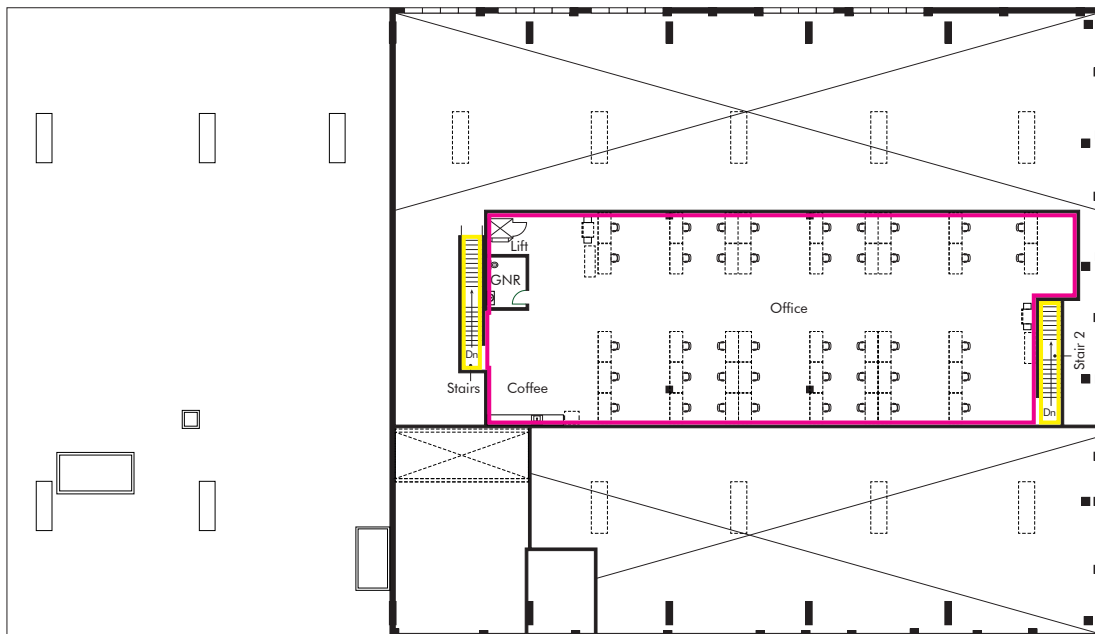
# Building 4

Total SF: ±31,044

## First Floor Plan



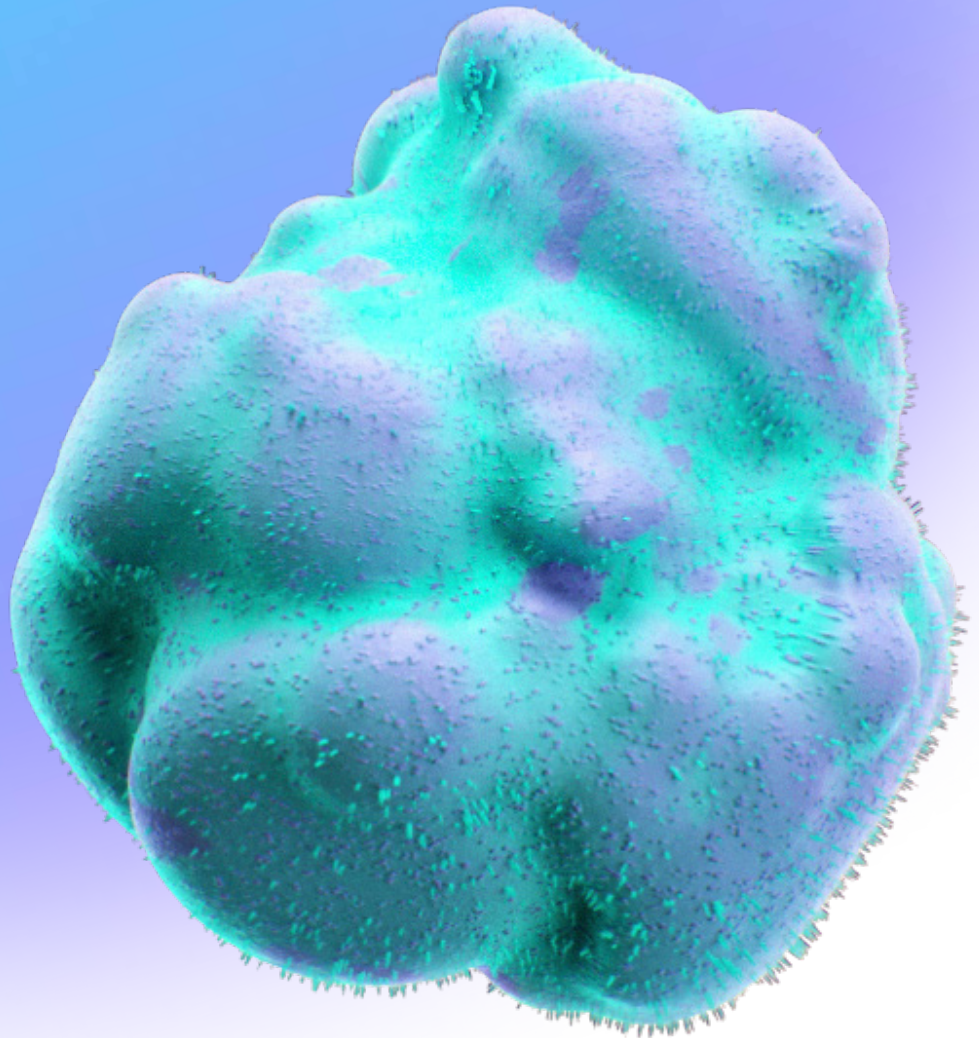
## Second Floor Plan



— Office — Lab — Common

# Live through discovery

theLAB Berkeley has been designed to meet your company's needs and to keep your life in balance. With indoor-outdoor space, a boutique gym, and frequent food trucks, the space will help you feel your best so you can do your best work.





01/08

## CollaborativeLAB

The CollaborativeLAB is a covered breezeway perfect for causal meetings or just kicking back and enjoying your surroundings.

# AmphitheaterLAB

Our amphitheater is a place to listen, learn, and be entertained. Whether holding a lecture, hosting a concert, or just meeting up to discuss ideas big and small, the amphitheater has the space to accommodate your needs.





03/08

## FitnessLAB

Break a sweat in the state-of-the-art boutique FitnessLAB. With dozens of workout stations, a dedicated yoga area, and locker rooms complete with private shower stalls, you can hit the gym during or after work without a long commute.

# Shade Lounge

The Shade Lounge is the main artery of the campus; a communal space that brings life to the buildings. This is a space to eat, work, or just relax and daydream. Who knows what you'll discover when you let your mind wander.



05/08

## PresentationLAB

Share findings, discuss possibilities, and learn something new in our PresentationLAB. This space has all of the room and AV resources you need to have impactful presentations and productive meetings.



06/08

## The Berm

The Berm an elevated exuberant grass plain is the perfect place to grab a bite to eat and take part in an afternoon outing to relax and enjoy the fresh air.



07/08

# Secured Surface Parking

Ample parking at theLAB Berkeley, including secured surface parking and multi-level structured parking garage.



08/08

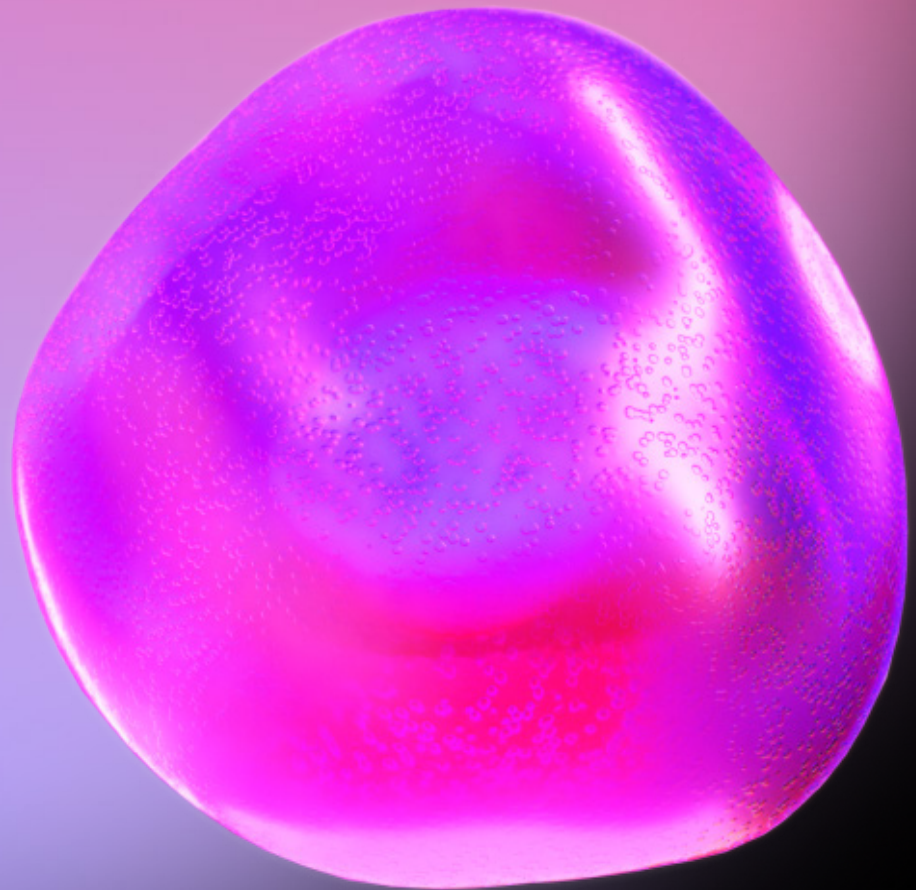
# Multi-level Structured Parking

Covered parking is available at theLAB, including a newly constructed parking garage with 4 levels and +/- 415 stalls and controlled security access.



# Discover Berkeley

A neighborhood teeming with life is the perfect for a life science campus. The nearby market area, restaurants and shops bring a sense of electricity to the historic location.





## Life Science Epicenter

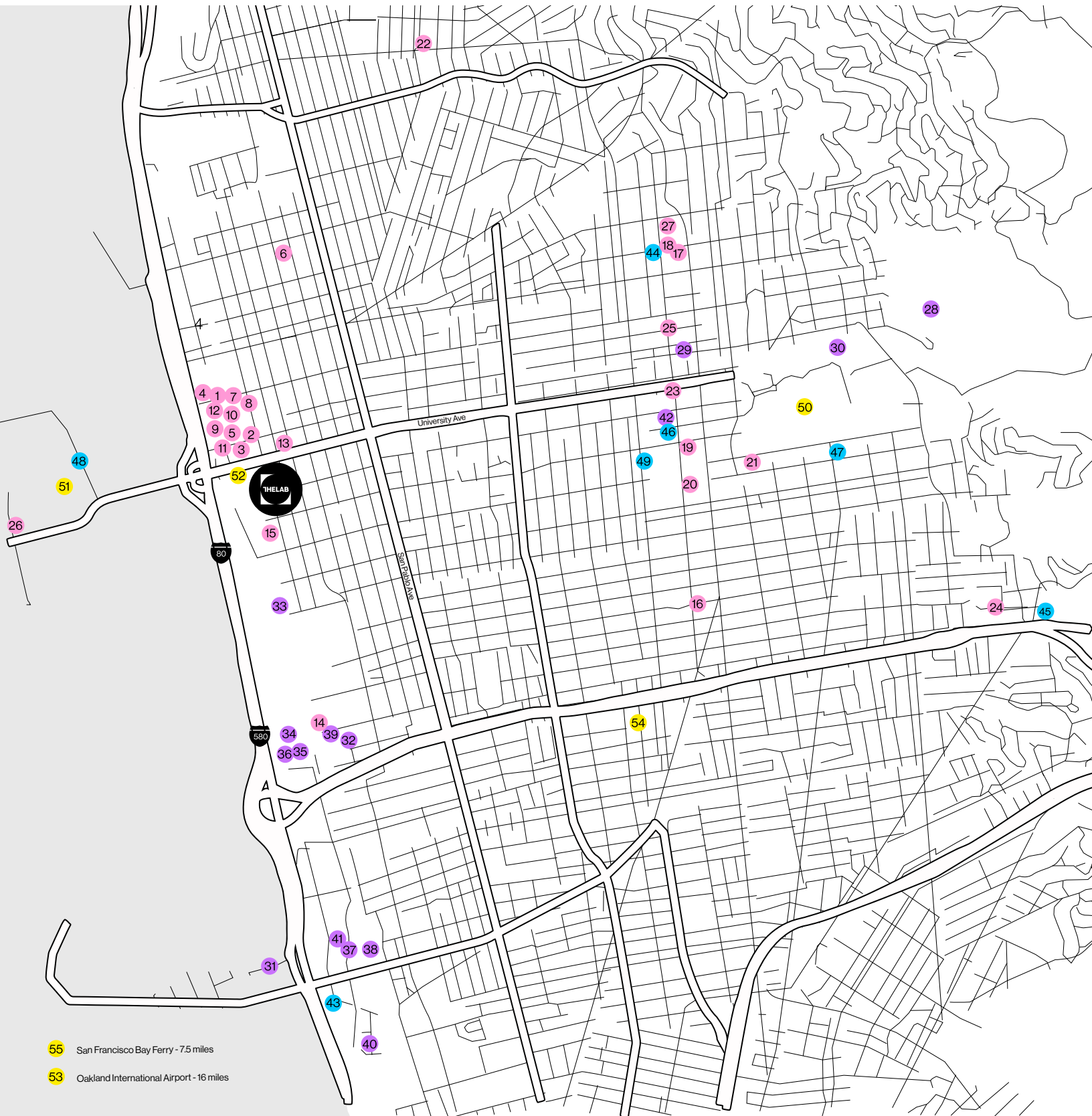
theLAB is centrally located in Berkeley, California, a hub for both scientific and technological development. Berkeley has attracted leaders from industries including aerospace, technology, life science and more. Get to know your community as you enjoy the ample restaurants and shops right around the corner.

# Meet the Neighbors

Finding inspiration is easy in Berkeley. The city prides itself of creativity and ingenuity and this neighborhood is no different; you're as likely to come across an artist as an aeronautics expert. This melting pot of arts and sciences has created a space where no idea is too crazy to pursue and nothing seems impossible.



- Food & Retail
- Local Tenants
- Hotels
- Landmarks & Transportation



## Retail

---

- |                 |                   |         |
|-----------------|-------------------|---------|
| 1 Sephora       | 3 Stella Carakasi | 5 Apple |
| 2 Anthropologie | 4 CB2             | 6 REI   |

## Restaurants

---

- |                           |                               |                                    |
|---------------------------|-------------------------------|------------------------------------|
| 7 Bette's Oceanview Diner | 14 Riva Cucina                | 21 Julia's Restaurant              |
| 8 Café M                  | 15 Tomate Cafe                | 22 Rivoli                          |
| 9 Lyasare                 | 16 Kirala                     | 23 Comal                           |
| 10 Peet's Coffee          | 17 Chez Panisse               | 24 Rick & Anns                     |
| 11 Project Juice          | 18 Cesar                      | 25 Corso                           |
| 12 Market Hall            | 19 Angelica Louisiana Kitchen | 26 Skates on the Bay               |
| 13 Thai Table             | 20 La Note                    | 27 Sauls Restaurant & Delicatessen |

## Local Tenants

---

- |  |   |                       |
|--|---|-----------------------|
| 28 Lawrence Berkeley National Laboratory | 33 Bayer HealthCare                         | 38 Zymergen           |
| 29 UC Berkeley Labs                      | 34 Perfect Day                              | 39 Pivot Bio          |
| 30 QB3                                   | 35 Lawrence Berkeley National Labs          | 40 Grifols Diagnostic |
| 31 Dynavax Technologies                  | 36 Seimens Healthcare Molecular Diagnostics | 41 Novartis           |
| 32 Caribou Biosciences, Inc.             | 37 Gritstone Oncology                       | 42 Berkeley IPIRA     |

## Hotels

---

- |                              |                         |  |
|------------------------------|-------------------------|--|
| 43 Hyatt Place               | 45 Claremont Club & Spa | 48 Double Tree by Hilton Hotel Berkeley Marina |
| 44 SenS Hotel & Vanne Bistro | 46 Hotel Shattuck Plaza | 49 Downtown Berkeley Inn                       |
|                              | 47 Graduate Berkeley    |  |

## Landmarks & Transportation

---

- |                                 |                                  |                            |
|---------------------------------|----------------------------------|----------------------------|
| 50 UC Berkeley                  | 52 Berkeley Amtrak Station       | 54 Ashby BART Station      |
| 51 Berkeley Marina & Waterfront | 53 Oakland International Airport | 55 San Francisco Bay Ferry |

# theLAB Berkeley

2222 Fifth Street,  
Berkeley, CA 94710

Steve Dunn  
415.240.4625  
sdunn@steelwavellc.com

Stacy McClaughry  
510.703.2793  
smcclaughry@steelwavellc.com

Gregg Domanico  
415.215.5218  
gregg.domanico@cbre.com

James Bennett  
650.494.5192  
james.bennett@cbre.com

Michael Domanico  
650.430.1464  
michael.domanico@cbre.com