

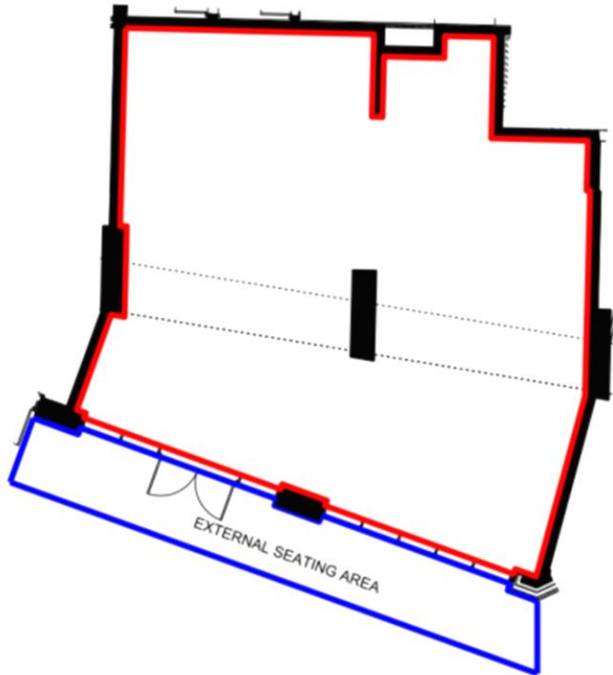


LONDON
CITY ISLAND


**ISLAND FOR
THE ARTS**

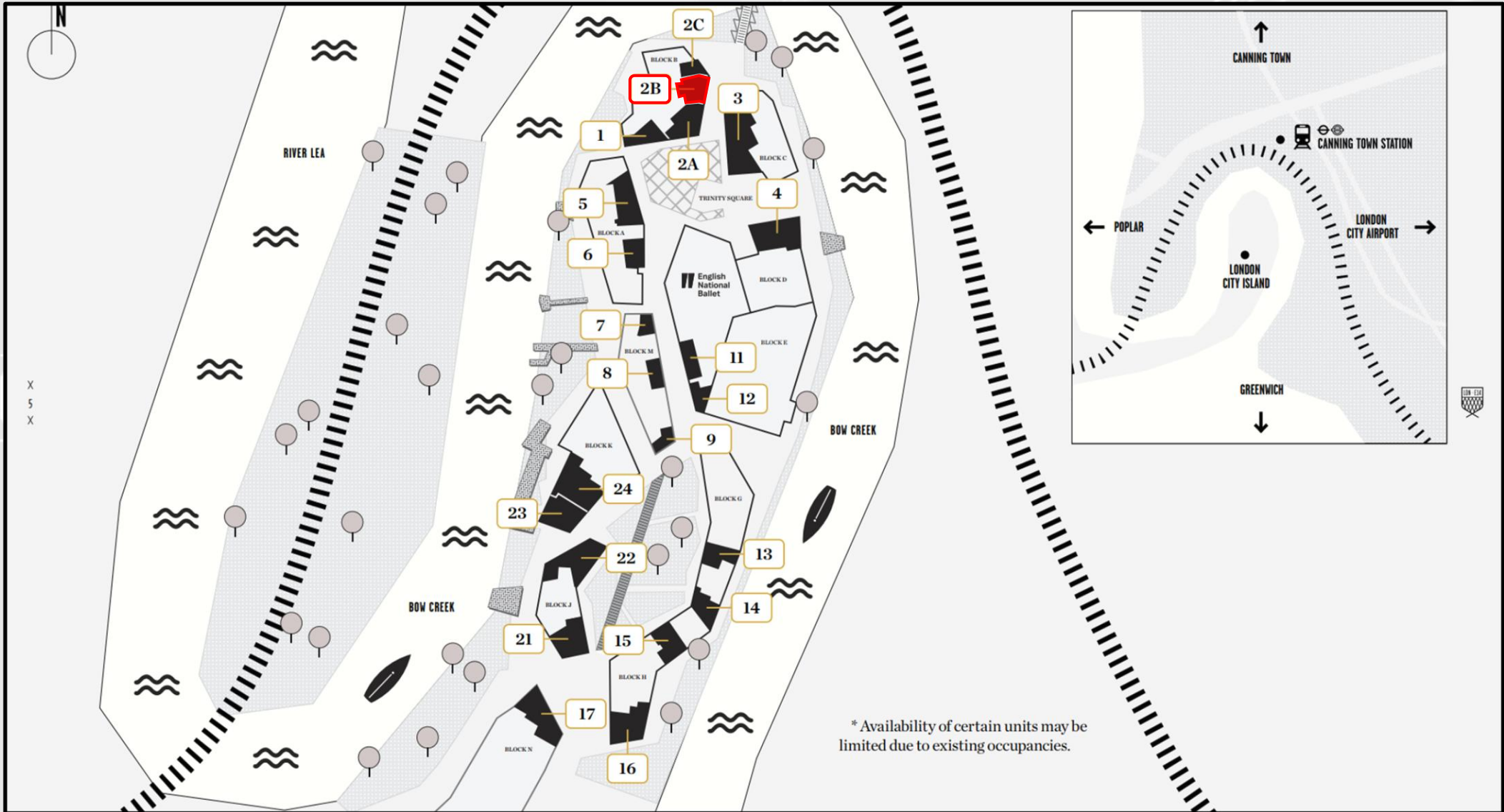
Fitted Unit | Use Class E | New Lease

Ground: 1884 sqft.



POTENTIAL USES: Retail, Showroom, Offices, Workspace, Studio, Production, Workshop





* Availability of certain units may be limited due to existing occupancies.

Terms



TERMS	THIS UNIT
LEASE	flexible
RENT	£33,000 per annum exclusive of VAT, rates and service charge
INCENTIVES	9-12 months rent free
SERVICE CHARGE	TBC
RATEABLE VALUE 2026:	£138,000
SPECIFICATION:	partially fitted
INTERNAL VIEW	https://my.matterport.com/show/?m=BzvH2L3V7GL
(Copy & Paste into URL)	
SUBJECT TO CONTRACT	



CONTACT US

We'd love to help you discover everything London City Island has to offer. Get in touch to learn more about our homes, amenities, and vibrant island community.



JOSH GAMBER

josh.gamber@shackletonproperty.com
0759 688 5622

TONY MOORE

tony.moore@shackletonproperty.com
0779 242 9660