

OBERFELD SNOWCAP

FOR LEASE ↘

1176 & 1196 Sherbrooke W Montréal, QC

Maison Alcan

Manon Larose *

Managing Director
Commercial Real Estate Services
438.990.8968
manonl@oberfeldsnowcap.com

*Chartered real estate broker, DA

Michelle Marcotte-Blart **

Director
Commercial Real Estate Services
514.972.6163
michelle@oberfeldsnowcap.com

**Commercial real estate broker

Molly O'Neil**

Account executive
Commercial Real Estate Services
514.348.1199
molly@oberfeldsnowcap.com

**Commercial real estate broker



Overview

SQUARE FOOTAGE

CRU01 : 1,358 SF | CRU02 : 1,680 SF

ADDRESS

1176 & 1196 Sherbrooke W, Montréal, QC

AVAILABILITY

Immediate

NET RENT

Ask listing brokers

ADDITIONNAL RENT

\$25.26 PSF

PATRIMONIAL
SITE



LOCATED IN THE
GOLDEN SQUARE MILE

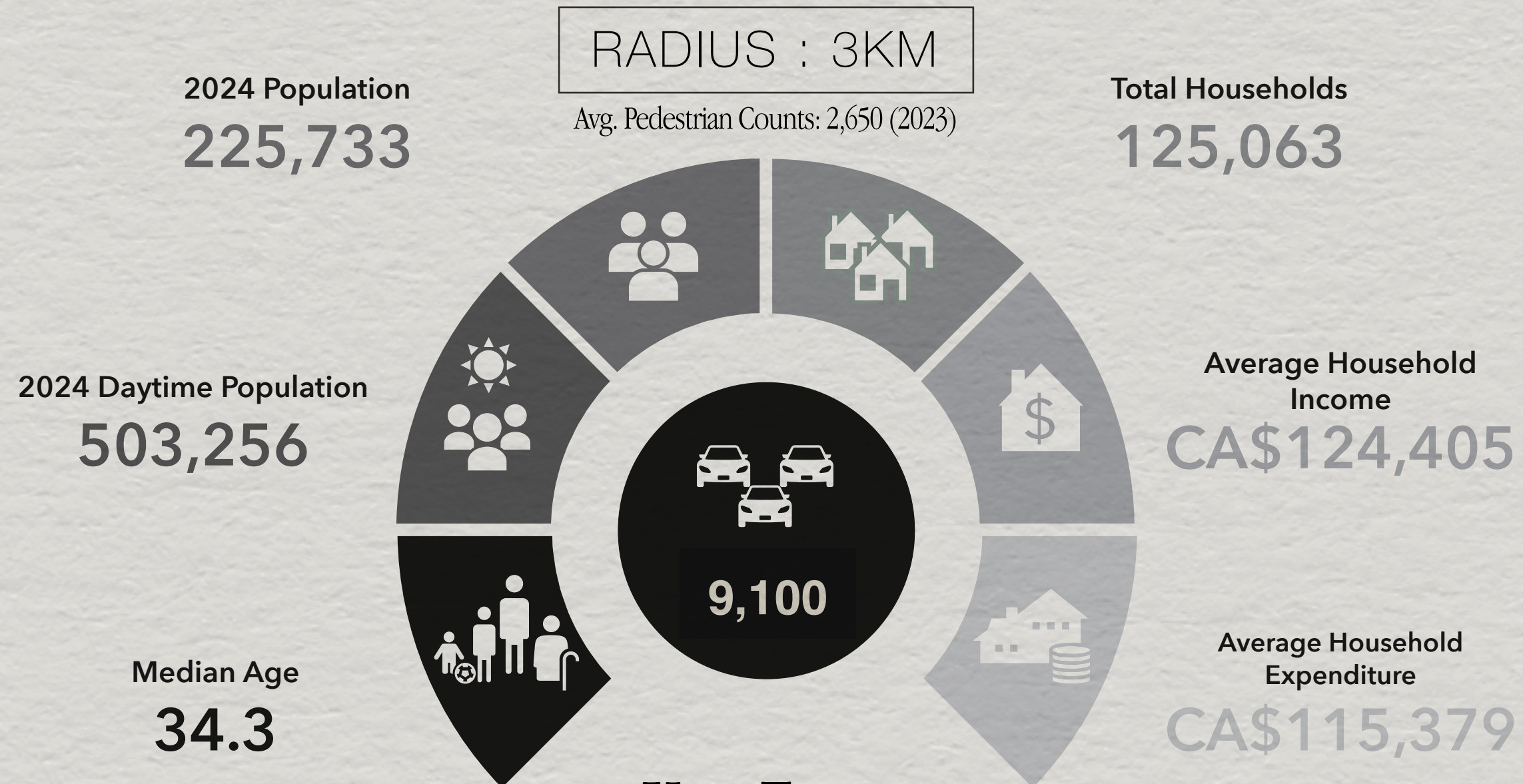


WALKING DISTANCE FROM THE EATON CENTER,
MCGILL, THE MUSEUM OF FINE ART THE RITZ...



**OBERFELD
SNOWCAP**

Area Demographics

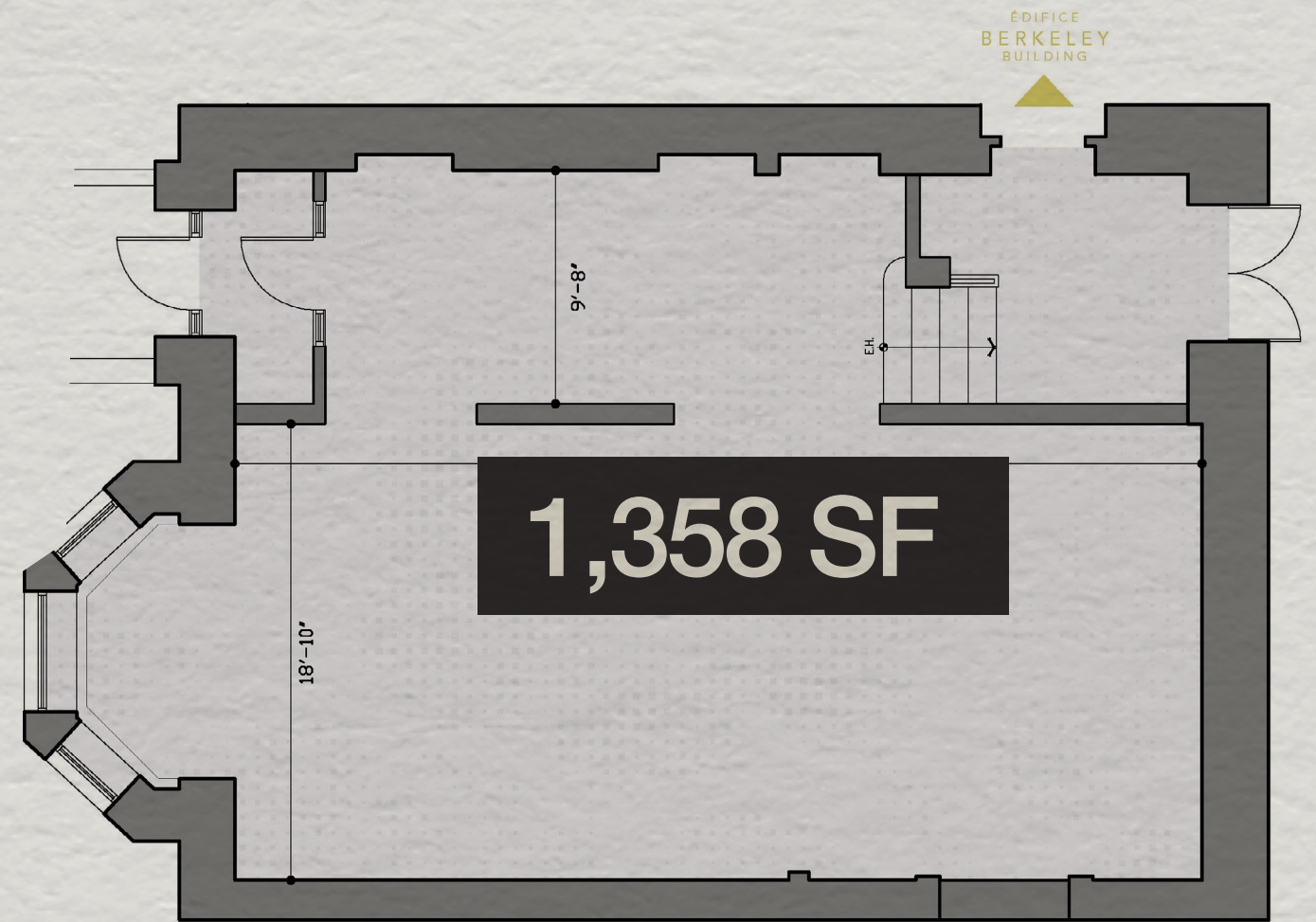
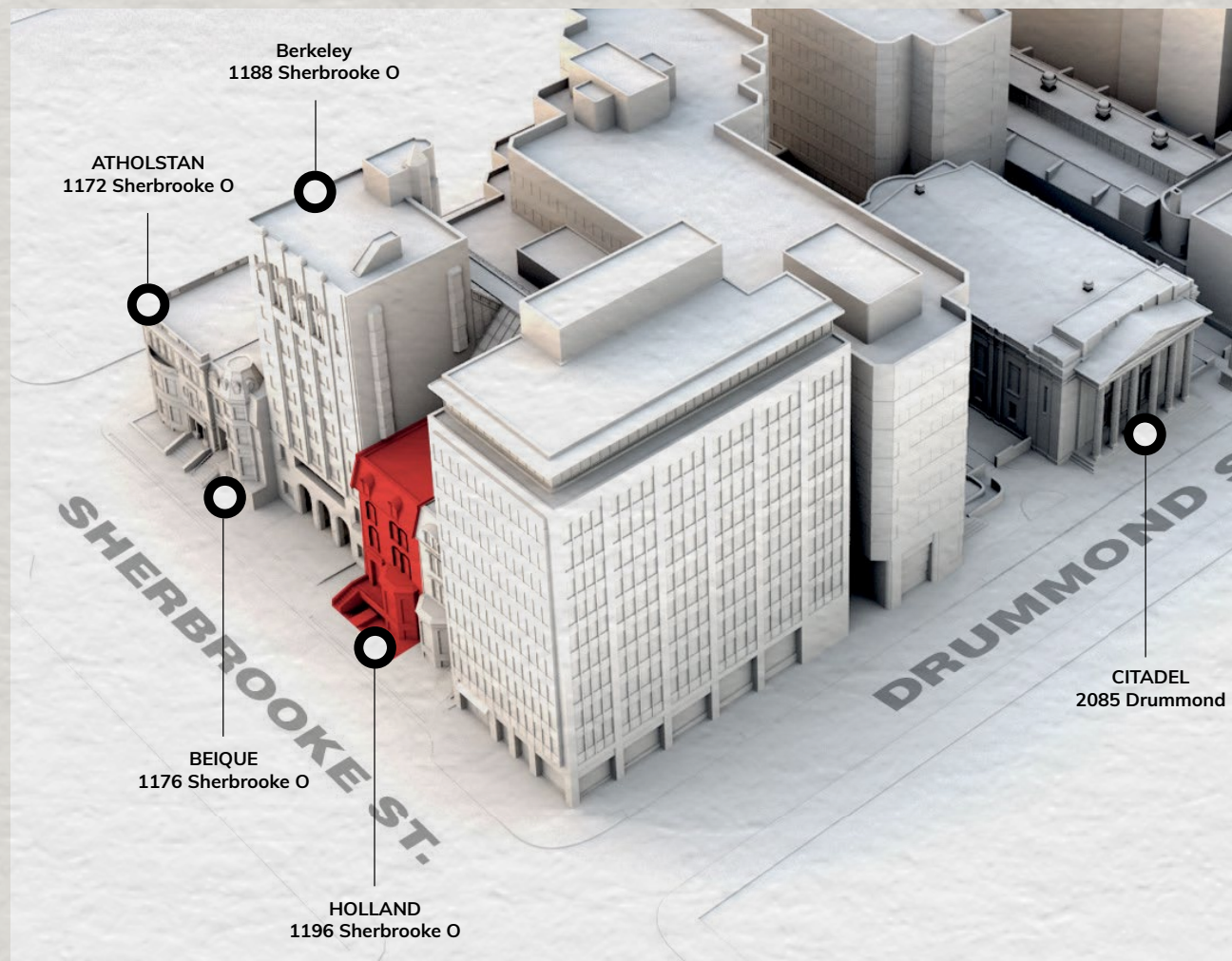


Key Facts

Demographic Data Source: Environics (2024)

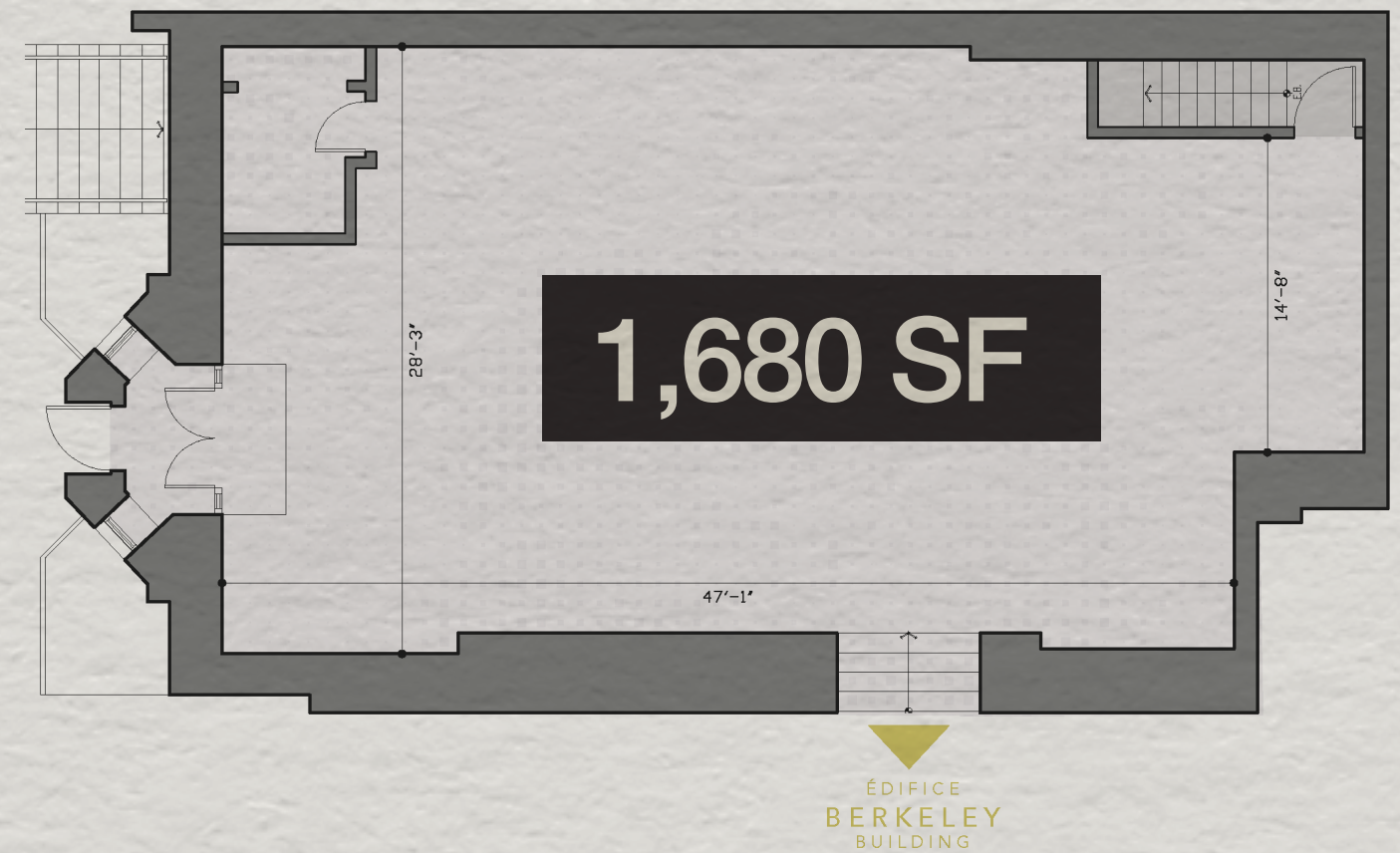
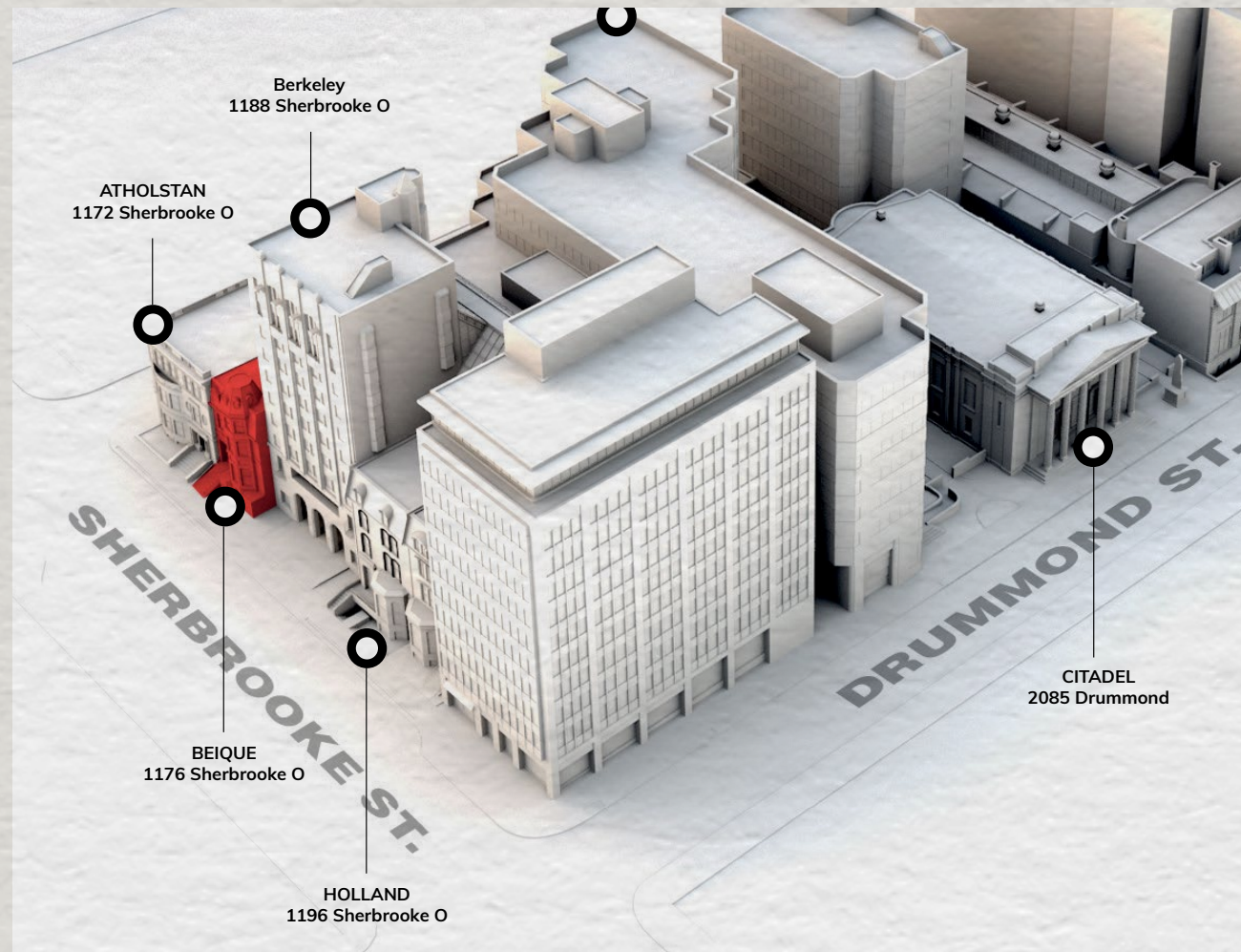
Plan - Cru 01

1176 Sherbrooke W



Plan - Cru 02

1196 Sherbrooke W



Photos - Beique



Retailer Map



- 1 RBC
- 2 Hotel Omni Mont-Royal
- 3 Scotia Bank
- 4 Best Western Ville-Marie
- 5 Sofitel Montreal Hotel
- 6 Mount Royal Club
- 7 Montreal Museum of Fine Arts
- 8 Tiffany & Co.
- 9 The Ritz Carlton
- 10 Vogue Hotel Montreal
- 11 Four Seasons Hotel
- 12 Apple Store
- 13 Holt Renfrew Ogilvy
- 14 The North Face
- 15 BMO
- 16 Browns Shoes
- 17 Victoria's Secret
- 18 Michael Kors
- 19 Aritzia
- 20 ALDO
- 21 Scotia Bank Cinema
- 22 Club Monaco
- 23 Canada Goose
- 24 H&M
- 25 Pharmaprix
- 26 RBC
- 27 SAQ
- 28 Lululemon
- 29 Adidas Originals
- 30 Urban Outfitters
- 31 Vans
- 32 3 Brasseurs
- 33 SAQ Selection

Photos



www.oberfeldsnowcap.com

OBERFELD SNOWCAP

Manon Larose *

Managing Director
Commercial Real Estate Services
438.990.8968
manonl@oberfeldsnowcap.com

Michelle Marcotte-Blart **

Director
Commercial Real Estate Services
514.972.6163
michelle@oberfeldsnowcap.com

Molly O'Neil**

Account executive
Commercial Real Estate Services
514.348.1199
molly@oberfeldsnowcap.com