

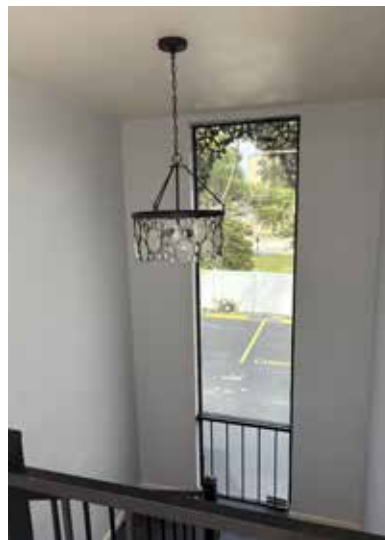


Property Highlights

- 2-Story Freestanding Building
- Excellent visibility on Colonial Drive
- On-site surface parking (some covered parking)
- Signage opportunities available

Location

- Located in the highly desirable Mills 50 District at the corner of Colonial Drive and Summerlin Avenue
- Minutes from Interstate-4, S.R. 408, Mills 50 District, AdventHealth Village, Downtown Orlando, Thornton Park and Eola Park



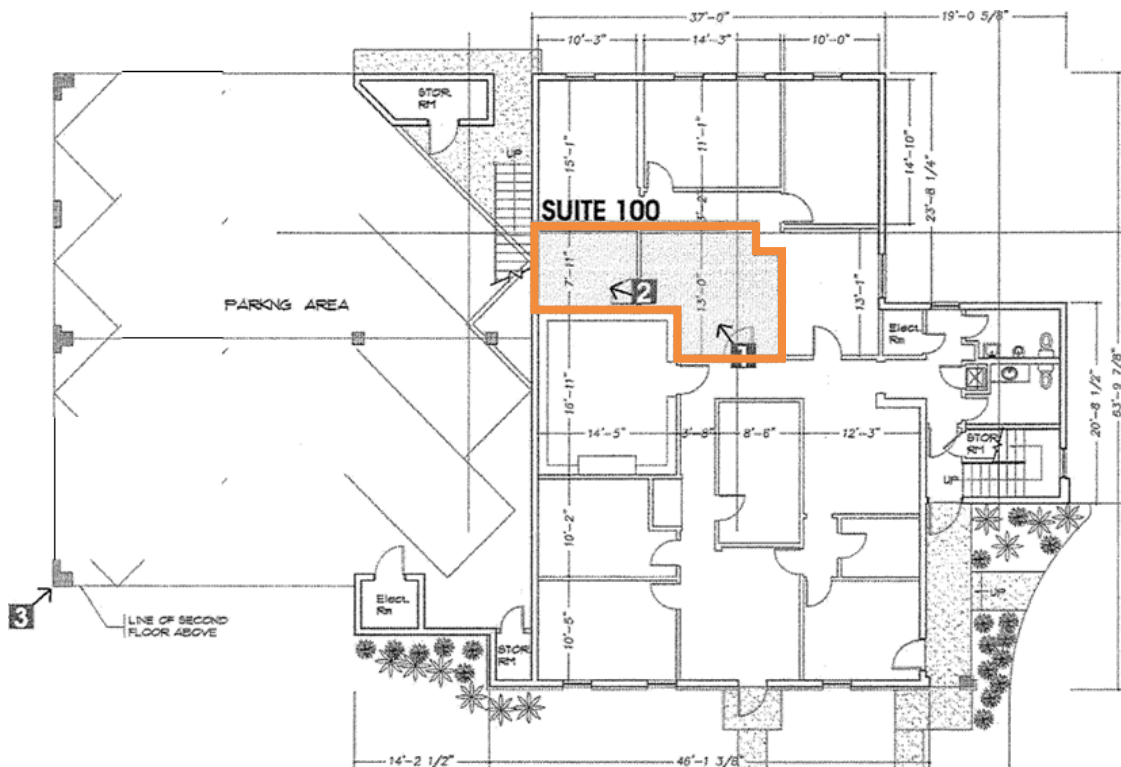
Emily Zinaich, Senior Vice President
D 407 440 6641
C 407 230 8797
emily.zinaich@avisonyoung.com



Nearby Amenities



Suite 100
265± RSF



Emily Zinaich, Senior Vice President
D 407 440 6641
C 407 230 8797
emily.zinaich@avisonyoung.com