



## **GARDENVILLE SHOPPING CENTER**

*Former Dollar General Space*

**4206 FRANKFORD AVENUE, BALTIMORE, MD**



**MASON POPHAM**

[mason.popham@thomas-park.com](mailto:mason.popham@thomas-park.com)

[www.thomas-park.com](http://www.thomas-park.com)

410-280-0220

# GARDENVILLE SHOPPING CENTER

## FORMER DOLLAR GENERAL SPACE

**Property Address** 4206 Frankford Avenue  
Baltimore, Maryland

**Size** 13,000 SF

**Term** Negotiable

**Rental Rate** \$10 PSF

**Rent Type** NNN

**Space Use** Retail

**Parking Spaces** 225

## TRAFFIC COUNT

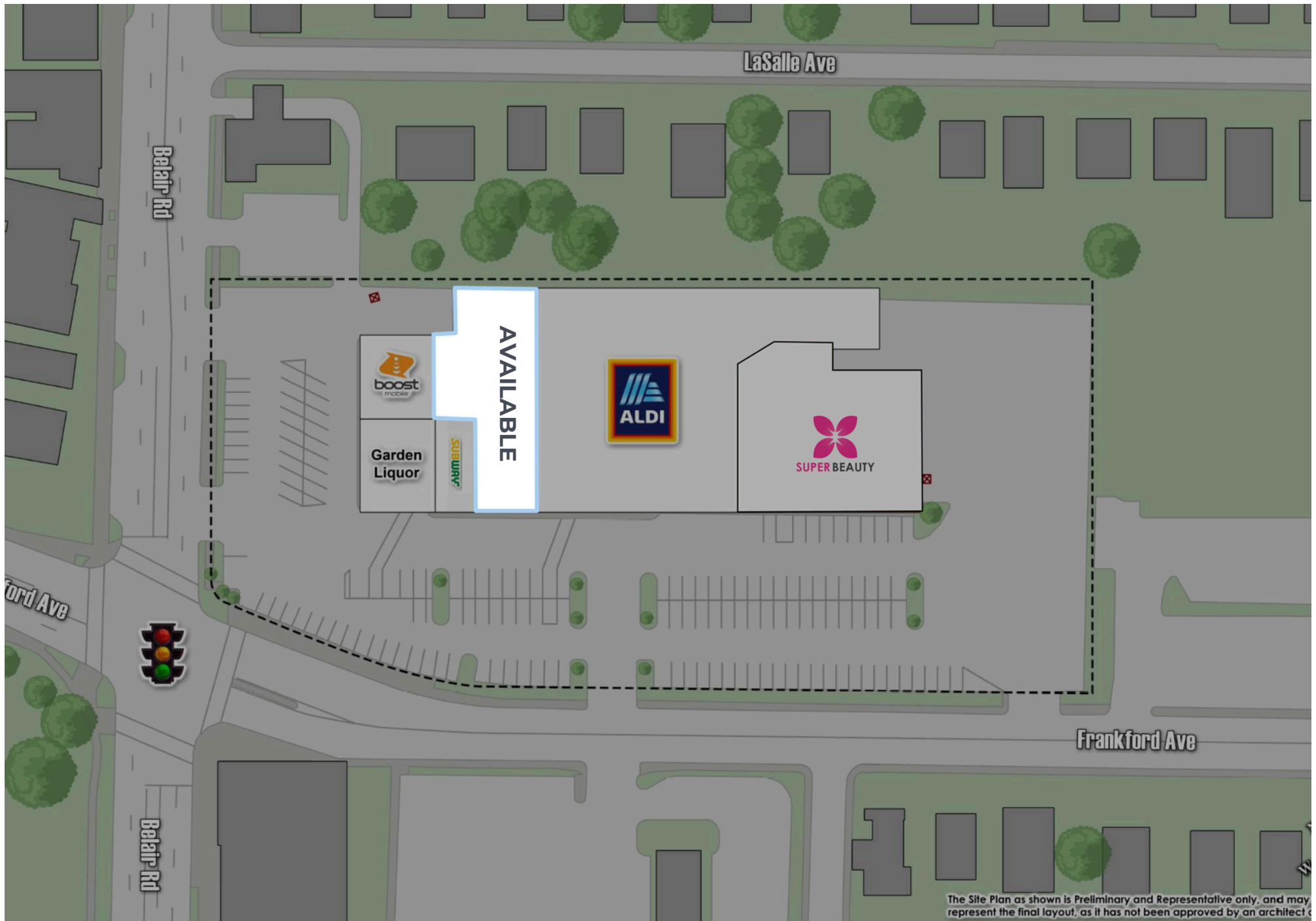
**Belair Road** 21,222

**Frankford Avenue** 10,820



**THOMAS PARK COMMERCIAL**  
1906 Towne Centre Blvd, Suite 270  
Annapolis, Maryland 21401  
www.thomas-park.com

**MASON POPHAM**  
mason.popham@thomas-park.com  
www.thomas-park.com  
410-280-0220



The Site Plan as shown is Preliminary and Representative only, and may not represent the final layout, as it has not been approved by an architect.

# GARDENVILLE SHOPPING CENTER

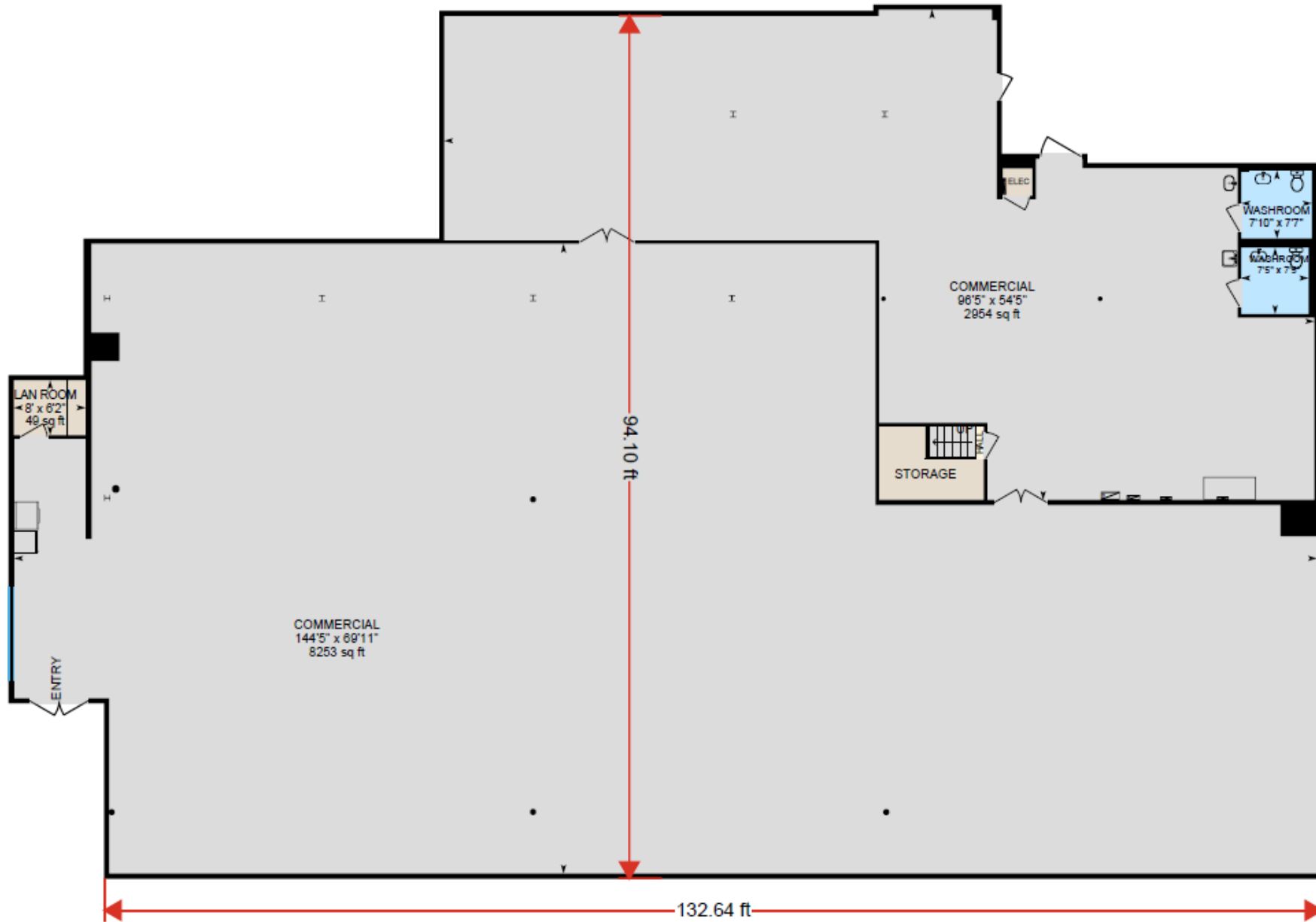


**THOMAS PARK COMMERCIAL**  
 1906 Towne Centre Blvd. Suite 270  
 Annapolis, Maryland 21401  
[www.thomas-park.com](http://www.thomas-park.com)

**MASON POPHAM**  
[mason.popham@thomas-park.com](mailto:mason.popham@thomas-park.com)  
[www.thomas-park.com](http://www.thomas-park.com)  
 410-280-0220

# Floor Plan

360° Virtual Tour



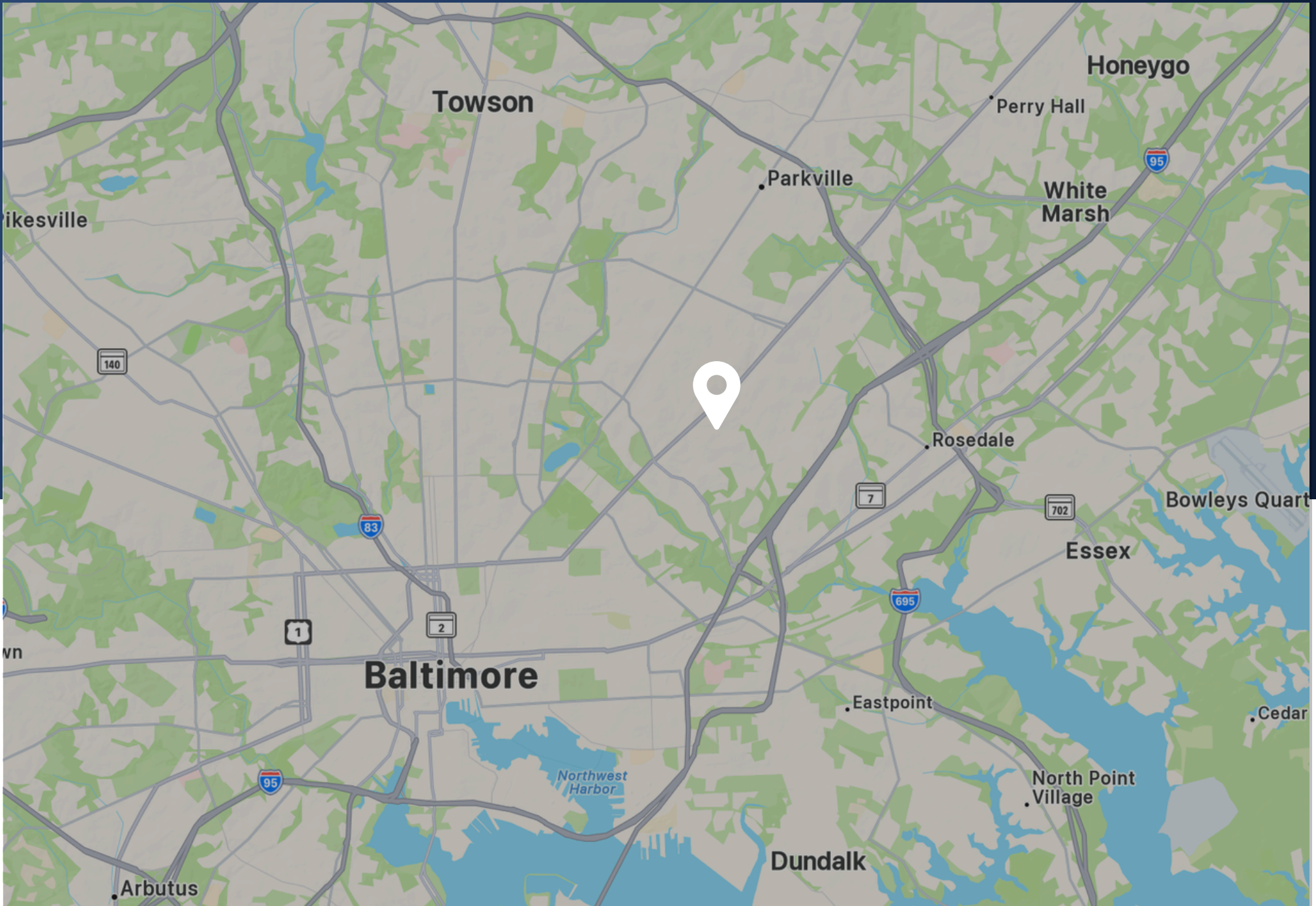


# GARDENVILLE SHOPPING CENTER



**THOMAS PARK COMMERCIAL**  
1906 Towne Centre Blvd. Suite 270  
Annapolis, Maryland 21401  
[www.thomas-park.com](http://www.thomas-park.com)

**MASON POPHAM**  
[mason.popham@thomas-park.com](mailto:mason.popham@thomas-park.com)  
[www.thomas-park.com](http://www.thomas-park.com)  
410-280-0220



# GARDENVILLE SHOPPING CENTER



**THOMAS PARK COMMERCIAL**  
1906 Towne Centre Blvd. Suite 270  
Annapolis, Maryland 21401  
[www.thomas-park.com](http://www.thomas-park.com)

**MASON POPHAM**  
[mason.popham@thomas-park.com](mailto:mason.popham@thomas-park.com)  
[www.thomas-park.com](http://www.thomas-park.com)  
410-280-0220



# YOUR COMMERCIAL REAL ESTATE PARTNER

*Thomas Park is a full-service commercial real estate firm offering alternative investment strategies and third-party commercial real estate services.*



## **MASON POPHAM**

mason.popham@thomas-park.com

www.thomas-park.com

410-280-0220



## **THOMAS PARK COMMERCIAL**

Thomas Park Commercial specializes in leasing and investment brokerage across all commercial asset classes throughout Maryland.



## **THOMAS PARK INVESTMENTS**

TPI is one of the fastest growing private equity real estate investment firms on the East Coast focused exclusively on healthcare real estate.



## **THOMAS PARK MANAGEMENT**

TPM is a best in class property management firm with a 30+ year track record in the commercial real estate industry.



## **THOMAS PARK DESIGN**

TPD is an innovative interior design firm specializing in healthcare, medical office, commercial office, and retail.



## **THOMAS PARK CONSTRUCTION**

TPC focuses on commercial construction within the healthcare, retail, office and industrial sectors.