

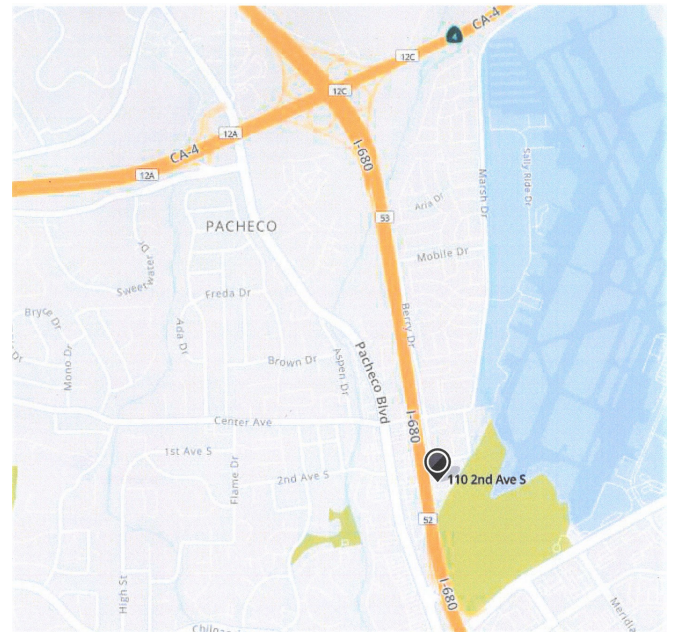
## Light Industrial/Commercial FOR LEASE

**110 Second Avenue South, Suite A-2**  
Pacheco, California



### Property Information:

- **UNIT FRONTS ON INTERSTATE 680**
- **4,000 +/- RENTABLE SQUARE FEET**
- **RATE: \$1.85 PER MO. INDUSTRIAL GROSS**
- **800 +/- SQUARE FEET OF IMPROVED OFFICE/SHOWROOM AREA WITH HVAC**
- **TWO RESTROOMS, TWO OFFICES, STORE ROOM**
- **POSSIBLE FREEWAY VISIBLE SIGNAGE**
- **ONE GRADE LEVEL 12' X 12' DOOR**
- **200 AMPS OF 120/208 VOLT 3 PHASE**
- **GOOD ACCESS TO HWY 4 AND I-680**



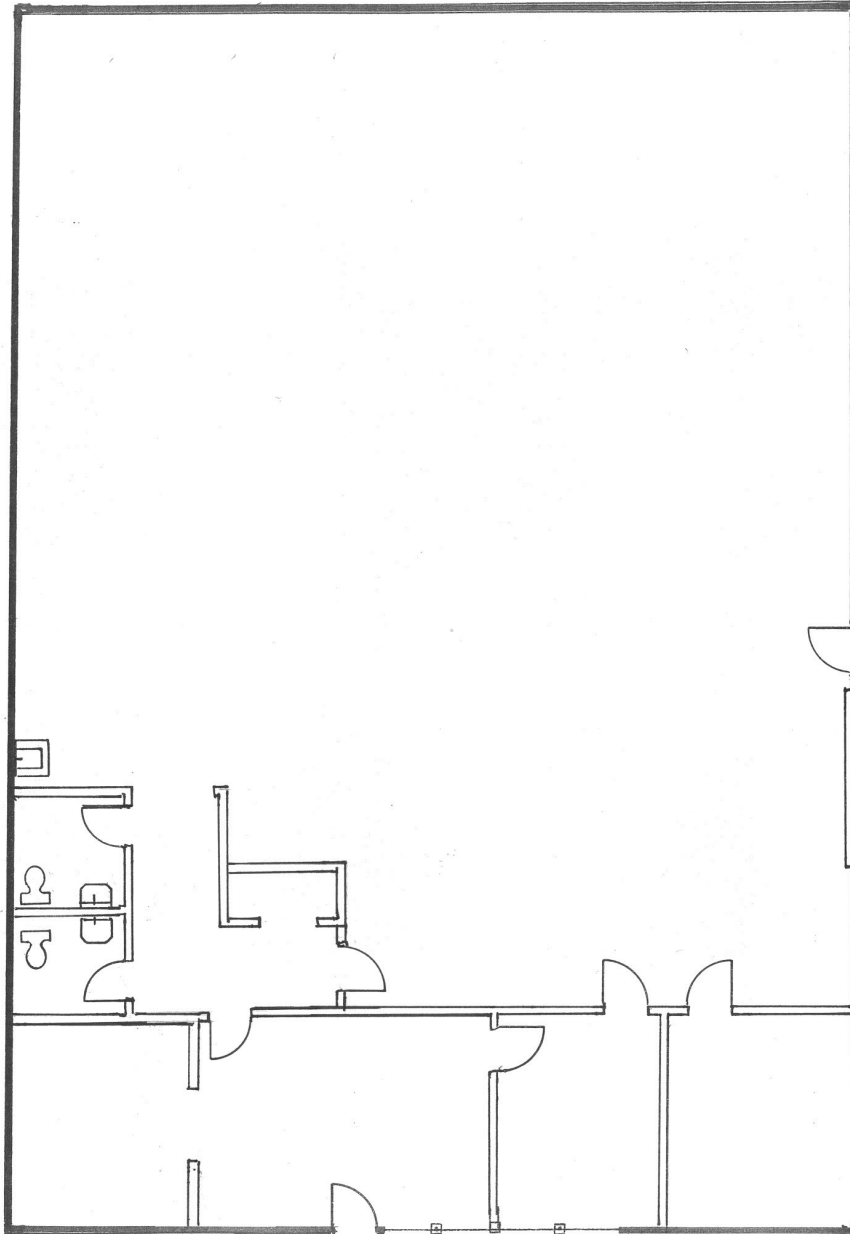
### Contact Listing Brokers:

Thomas Caple  
Deutscher Properties Corp  
(510) 908-0505  
tom@dpccommercial.com  
BRE# 01089011

Tom Cranmer  
Cranmer Assoc. Inc.  
(925) 933-1044  
tom@cranmerassociatesinc.com  
BRE# 00370734

Deutscher Properties Corp.  
370 Civic Drive  
Pleasant Hill, CA  
Office (925) 676-6166  
Fax (925) 676-6177  
www.dpccommercial.com

**110 Second Avenue South, Suite A-2,  
Pacheco, California – FLOOR PLAN**



**Contact Listing Brokers:**

Thomas Caple  
**Deutscher Properties Corp**  
CA BRE# 01089011  
(510) 908-0505  
tom@dpccommercial.com

Tom Cranmer  
**Cranmer & Assoc., Inc.**  
CA BRE# 00370734  
(925) 933-1044  
tom@cranmerassociatesinc.com

**Deutscher Properties Corp.**  
370 Civic Drive  
Pleasant Hill, CA  
Office (925) 676-6166  
Fax (925) 676-6177  
www.dpccommercial.com

## 110 Second Avenue South, Suite A-2, Pacheco, California – SITE PLAN



### Contact Listing Brokers:

Thomas Caple  
Deutscher Properties Corp  
CA BRE# 01089011  
(510) 908-0505  
tom@dpccommercial.com

Tom Cranmer  
Cranmer & Assoc., Inc.  
CA BRE# 00370734  
(925) 933-1044  
tom@cranmerassociatesinc.com

Deutscher Properties Corp.  
370 Civic Drive  
Pleasant Hill, CA  
Office (925) 676-6166  
Fax (925) 676-6177  
www.dpccommercial.com