

Big Tree Crossing

1,396 SF, 3,537 SF, & 4,105 SF Available (9,038 SF Combined)

1969-1973 Corporate Sq
Longwood, FL 32750

12' X 12' Grade Level Doors | Recently Renovated | Seminole County



First Floor

Second Floor

1973

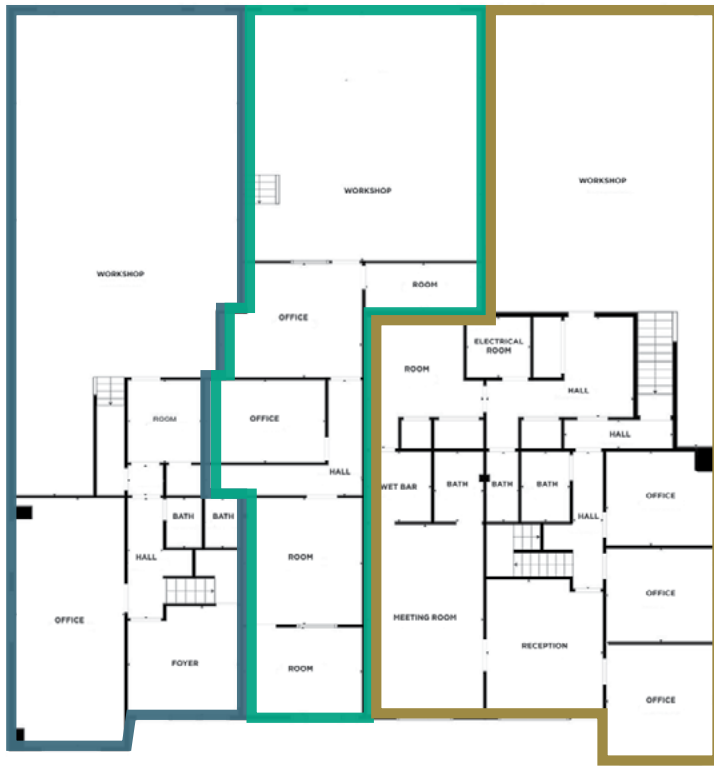
1971

1969

1973

1971

1969



Suite 1973

Suite 1971

Suite 1969

SUITE HIGHLIGHTS

SUITE HIGHLIGHTS

SUITE HIGHLIGHTS

- + 3,537 SF Total
- + 2,440 SF Office
- + 16'-18' Clear Height
- + 2.66/1000 SF Parking Ratio
- + One 12' x 12' Grade Level Door
- + 3 Phase Power
- + Fire Suppression

- + 1,396 SF Total
- + 935 SF Office
- + 16'-18' Clear Height
- + 2.66/1000 SF Parking Ratio
- + One 12' x 12' Grade Level Door
- + 3 Phase Power
- + Fire Suppression

- + 4,105 SF Total
- + 3,120 SF Office
- + 16'-18' Clear Height
- + 2.66/1000 SF Parking Ratio
- + One 12' x 12' Grade Level Door
- + 3 Phase Power
- + Fire Suppression

ASKING: \$16.00 psf NNN

ASKING: \$17.00 psf NNN

ASKING: \$16.00 psf NNN

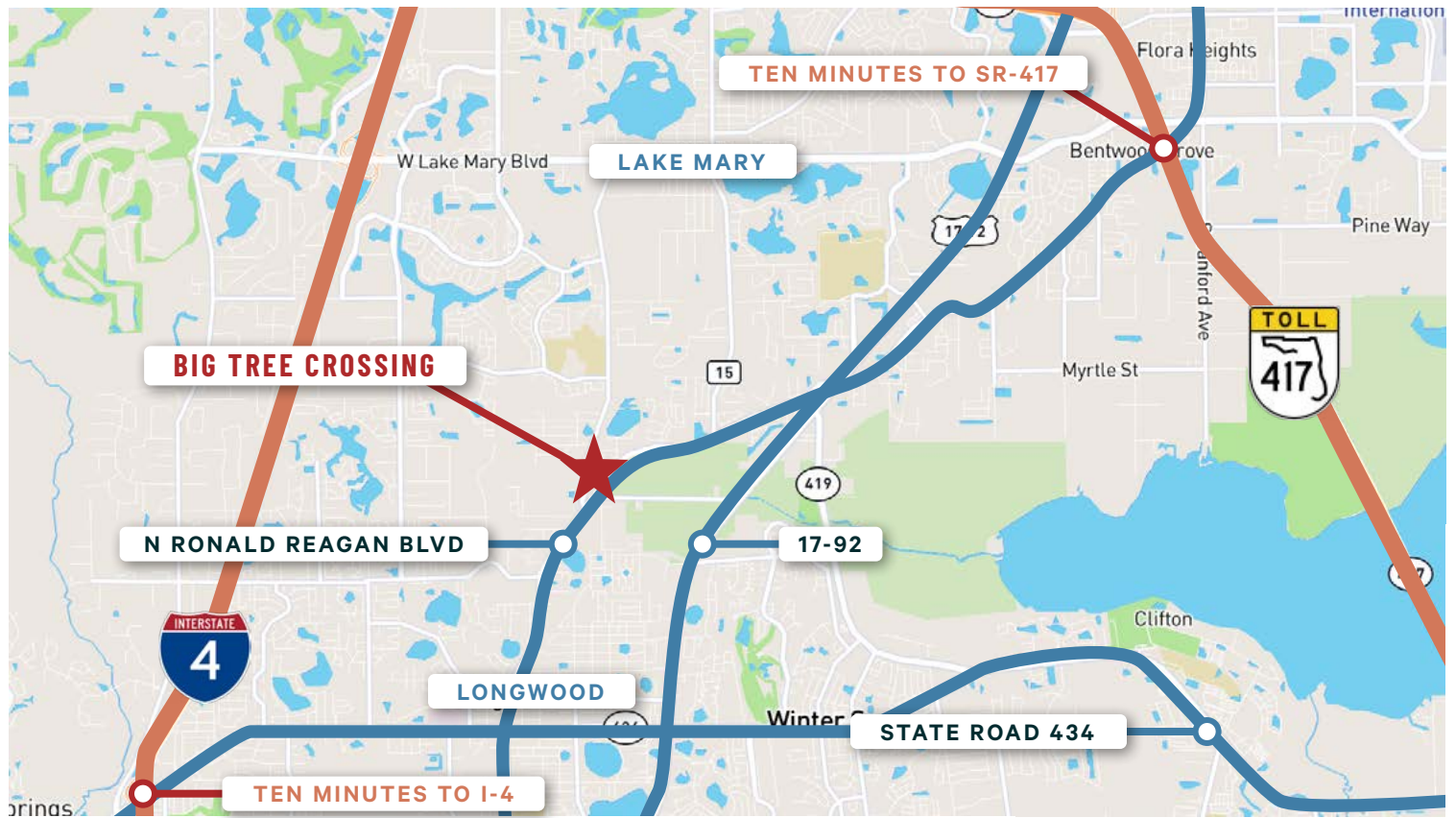
CONTACT US

Cameron Thomas
407 404 5078

Alex Eastwood
850 356 8231

Jose Rivera
407 404 5067

Location & Park Plan



CONTACT US

Cameron Thomas
407 404 5078

Alex Eastwood
850 356 8231

Jose Rivera
407 404 5067

Big Tree Crossing

1969-1973 Corporate Sq | Longwood, FL 32750

For Lease

Flex Perfection

Big Tree Crossing consists of 9,038 square feet total across three suites, ranging from 1,396 to 4,105 SF, in the quickly expanding Seminole County submarket. The building features 12' x 12' grade-level loading doors, spacious offices, and is conveniently located near major highways, restaurants, recreation options, and both labor and decision maker housing.

Property Highlights

- + Seminole County Submarket
- + 12' x 12' Grade Level Doors
- + 9,038 SF Total
- + Zoning: M-1
- + 2.66/1000 Parking Ratio
- + 0.65 Acre Site
- + 16'-18' Clear Height
- + Strong Labor Demographics



Location Highlights

Big Tree Crossing offers flex/industrial occupiers a significant advantage as it's located in the dynamic Seminole County Submarket. Within ten (10) minutes of both Interstate-4 and SR-417, Big Tree Crossing is perfectly positioned to accommodate a host of flex/industrial

users. The area also offers numerous recreation amenities, such as the J. Douglas Williams YMCA Family Center. Finally, Longwood and Lake Mary offer a wide variety of entertainment, dining, housing, and retail options.

Recent Renovations

- + Building Exterior Paint
- + Fire Suppression System
- + Office Carpet, Drywall, and Plumbing
- + Parking Lot Upgrades
- + New Diesel Generator
- + Electrical and low-voltage systems

Contact Us

Cameron Thomas

Senior Associate
407 404 5078
cameron.thomas@cbre.com

Alex Eastwood

Senior Associate
850 356 8231
alex.eastwood@cbre.com

Jose Rivera

Associate
407 404 5067
jose.rivera1@cbre.com

CBRE, Inc.

Licensed Real Estate Broker
2100 S. Orange Avenue, Suite 2100
Orlando, FL 32801

© 2025 CBRE, Inc. All rights reserved. This information has been obtained from sources believed reliable, but has not been verified for accuracy or completeness. You should conduct a careful, independent investigation of the property and verify all information. Any reliance on this information is solely at your own risk. CBRE and the CBRE logo are service marks of CBRE, Inc. All other marks displayed on this document are the property of their respective owners, and the use of such logos does not imply any affiliation with or endorsement of CBRE. Photos herein are the property of their respective owners. Use of these images without the express written consent of the owner is prohibited.

CBRE