

Alton Plaza

15255 Alton Parkway, Suite 200

Irvine, CA



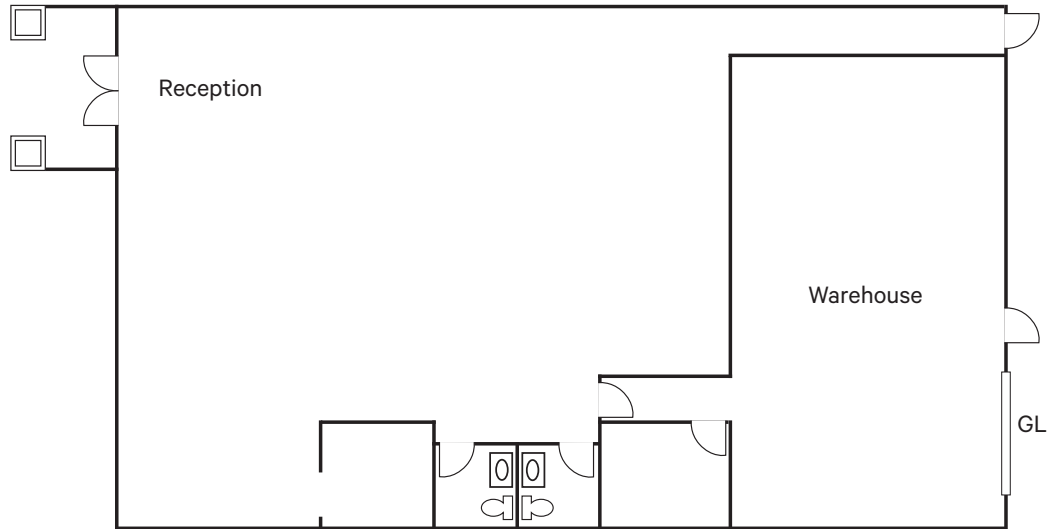
Property Features

- + ±5,510 SF with approximately ±4,510 SF of single-story office
- + One (1) Ground level door
- + ±3.5:1,000 Parking ratio
- + ±14' Minimum warehouse clearance
- + ±400 Amps of power
- + Located in the Alton Plaza master planned development
- + Close proximity to the Spectrum Center and many retail amenities
- + Excellent access to the 5 and 405 freeways via Lake Forest Drive or Bake Parkway
- + Sublease through September 30, 2027

Alton Plaza

15255 Alton Parkway, Suite 200 | Irvine Spectrum, CA 92618

For Sublease



Contact Us

Gregg Haly

Executive Vice President
+1 949 725 8632
gregg.haly@cbre.com
Lic. 00937913

Tyler Haly

Vice President
+1 949 725 8486
tyler.haly@cbre.com
Lic. 01944023

© 2023 CBRE, Inc. All rights reserved. This information has been obtained from sources believed reliable but has not been verified for accuracy or completeness. CBRE, Inc. makes no guarantee, representation or warranty and accepts no responsibility or liability as to the accuracy, completeness, or reliability of the information contained herein. You should conduct a careful, independent investigation of the property and verify all information. Any reliance on this information is solely at your own risk. CBRE and the CBRE logo are service marks of CBRE, Inc. All other marks displayed on this document are the property of their respective owners, and the use of such marks does not imply any affiliation with or endorsement of CBRE. Photos herein are the property of their respective owners. Use of these images without the express written consent of the owner is prohibited.

