



For Lease: Office

# 3780 14th Avenue

Quality Office Space Available for Lease in Markham

**Lennard:**

Here is where your business will *grow*.

[lennard.com](http://lennard.com)



# 3780 14th Avenue

Office space available for lease near the corner of 14th Avenue and Warden Avenue in an established business park in Markham.



Unit 208

**1,577 SF**

Unit 312

**950 SF**



Availability

**Immediate**



Net Rent

**\$12.00 PSF**

Additional Rent

**\$11.85 PSF**

## Property Highlights

- Excellent location in high-traffic area
- Public transit at door, and steps away from major intersection
- Easy access to Highways 407, 404 & 7
- Lots of natural light
- Ready to move in



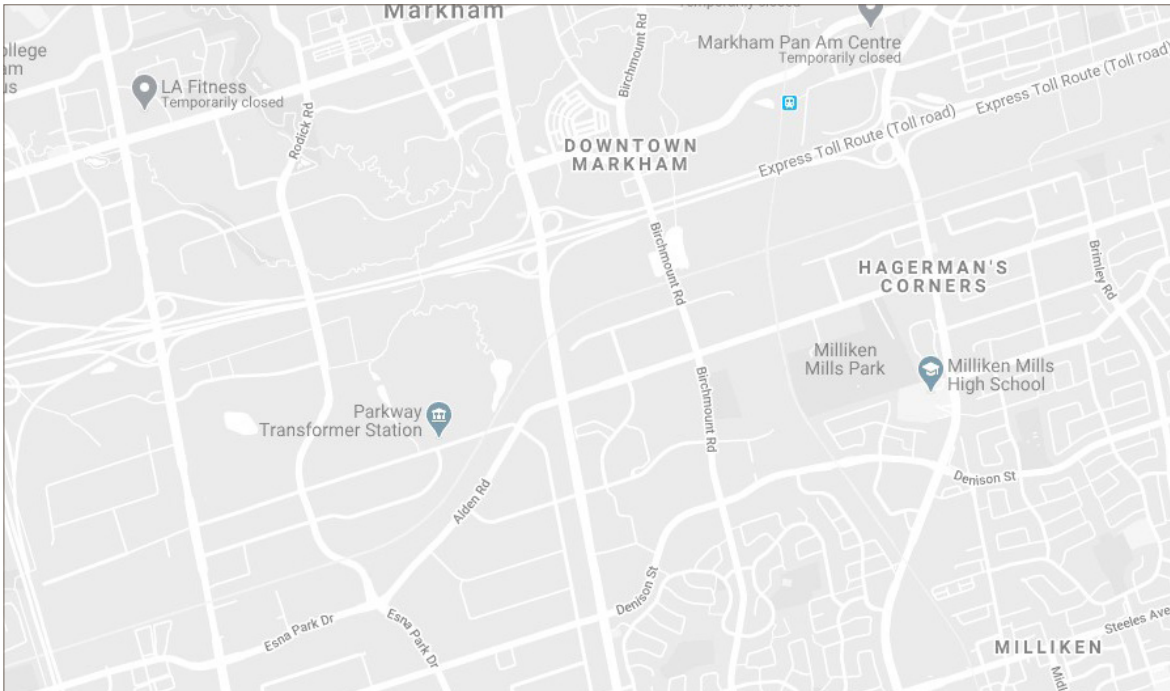
**Lennard:**

Marty Atkins\*\*, Vice President  
416.565.3455 • matkins@lennard.com

\*\*Broker

[lennard.com](http://lennard.com)

# 3780 14th Avenue



## What's Near By

3780 14th Avenue is located just steps from the busy intersection of Warden Avenue and 14th Avenue. With easy access to Highway 407, the property is served by both TTC and YRT routes. With many nearby amenities, the property is a 4 minute drive to Downtown Markham, 6 minutes to Unionville GO Station and 8 minutes to CF Markville Mall.

**Lennard:**

Marty Atkins\*\*, Vice President  
416.565.3455 • matkins@lennard.com

\*\*Broker

[lennard.com](http://lennard.com)

# 3780 14th Avenue



Unit 208

1,577 SF



Availability

Immediate

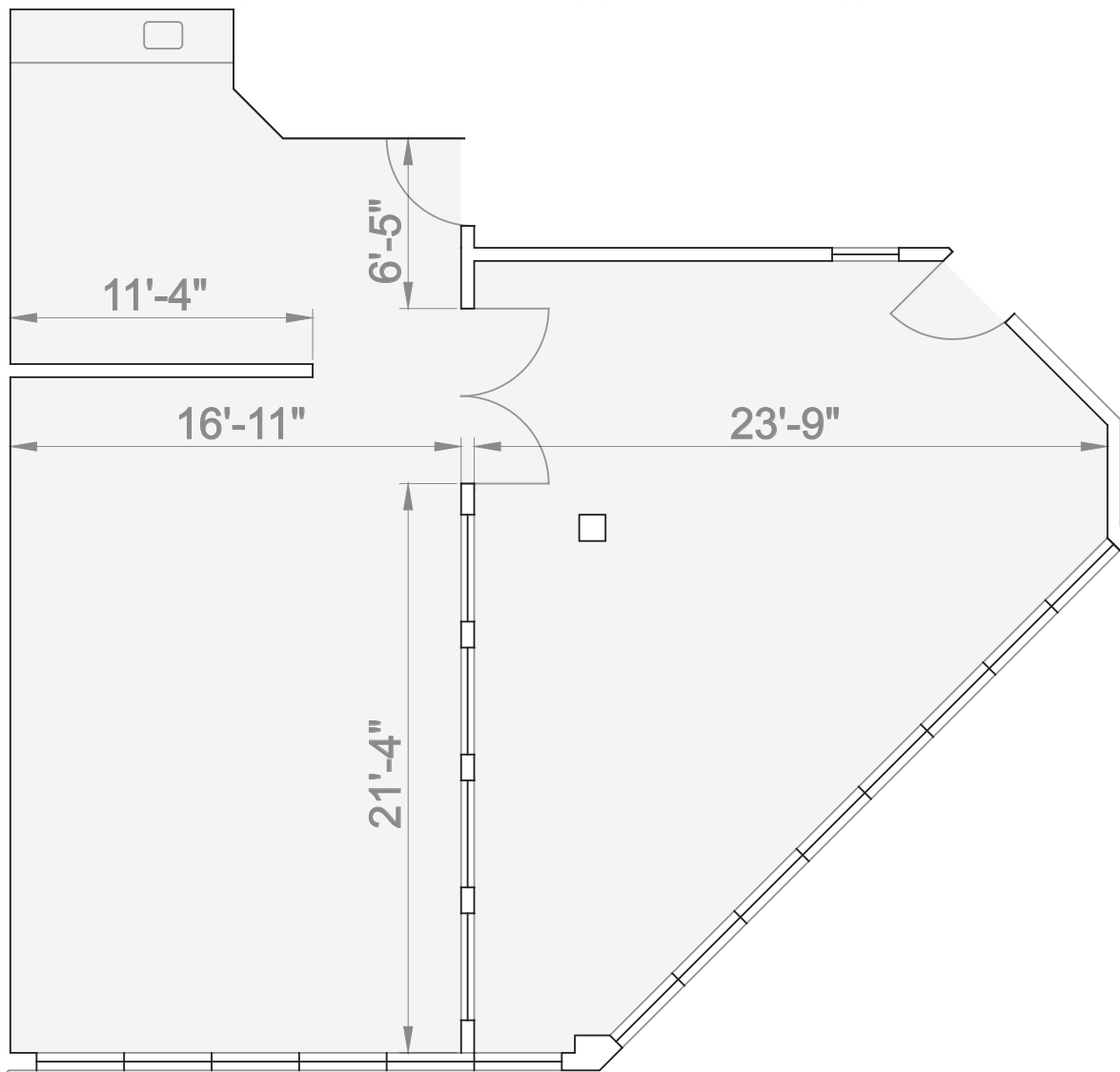


Net Rent

\$12.00 PSF

Additional Rent

\$11.85 PSF



**Lennard:**

Marty Atkins\*\*, Vice President  
416.565.3455 • matkins@lennard.com

\*\*Broker

[lennard.com](http://lennard.com)

# 3780 14th Avenue



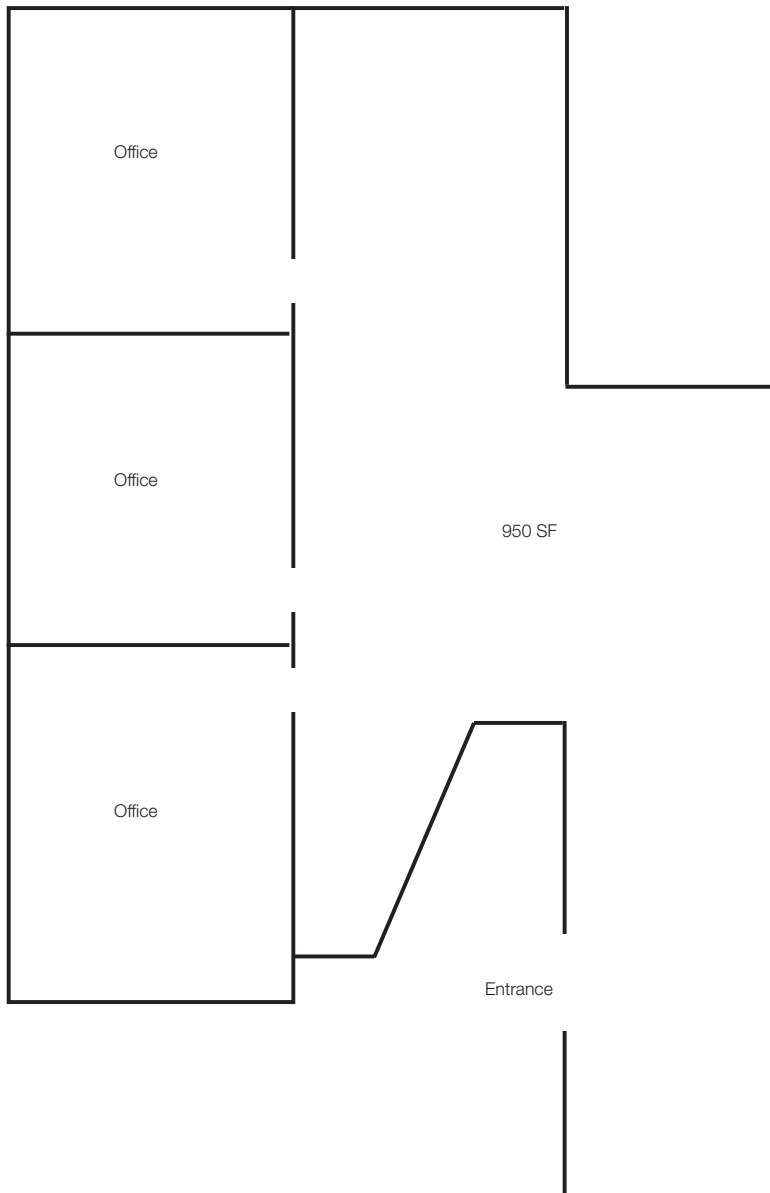
Unit 312  
**950 SF**



Availability  
**Immediate**



Net Rent  
**\$12.00 PSF**  
Additional Rent  
**\$11.85 PSF**



Note: Illustration Purposes only. Drawing not to scale

**Lennard:**

Marty Atkins\*\*, Vice President  
416.565.3455 • matkins@lennard.com

\*\*Broker

[lennard.com](http://lennard.com)



## Lennard:

Marty Atkins\*\*, Vice President  
416.565.3455  
[matkins@lennard.com](mailto:matkins@lennard.com)

201-60 Columbia Way, Markham  
905.752.2220  
[lennard.com](http://lennard.com)

\*\*Broker

Statements and information contained herein are based on information furnished by principals and sources we deem reliable; however, we make no representation or warranty as to the accuracy, completeness or current status of such information and assume no responsibility for any errors, omissions, or misstatements. All information should be independently verified by the recipient. Lennard Commercial Realty, Brokerage.