

# HORIZONS HOUSE

81-83 Waterloo Quay  
Aberdeen AB11 5DE

TO LET  
GRADE 'A' OFFICE SUITES

From 256.00 sq. m (2,756 sq. ft)  
to 668.50 sq. m (7,196 sq. ft)

—

BREEAM rating "Very Good"  
and EPC Rating of 'A'

—

Secure car parking spaces





**Surrounding Occupiers:**

**City Centre:** Harbour Energy / Shell / RBS / EY / KPMG / Wood / Spirit Energy / Deloitte / Burness Paull / PwC / Tenaris / Aberdeen Journals

**NDBQ:** Petrofac / EnQuest / WorleyParsons / OEUK

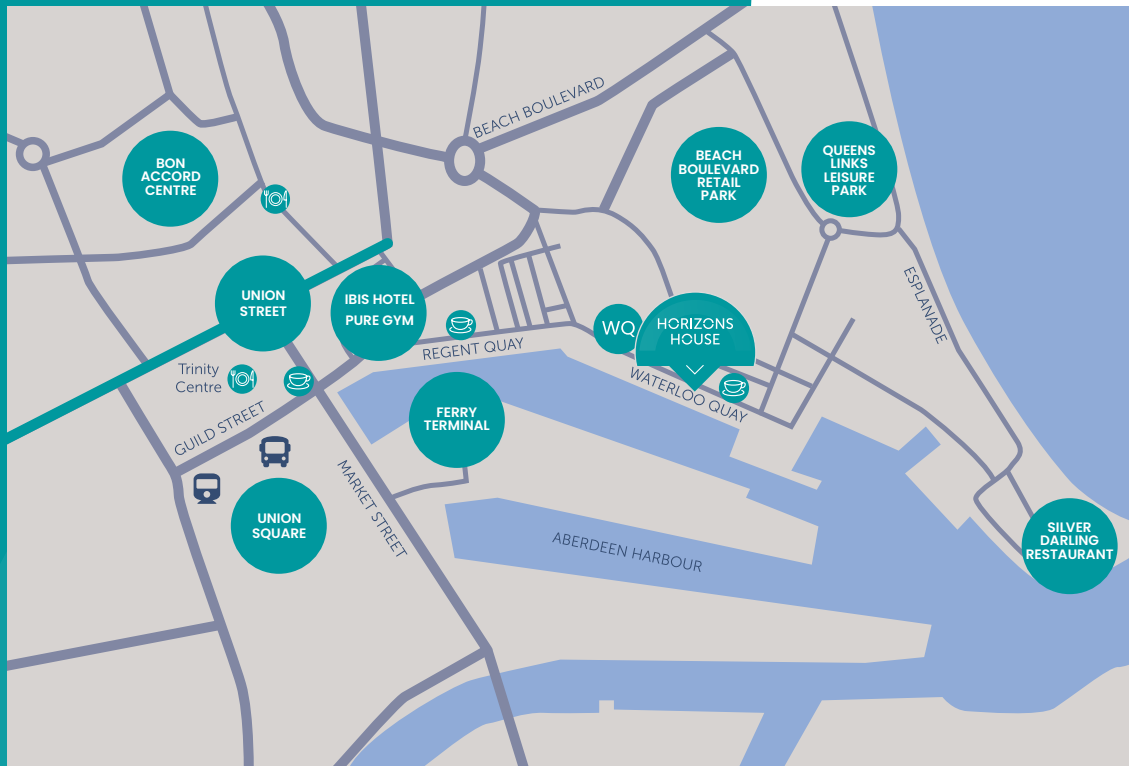
**Harbour:** CNR / Sodexo / Hagland / Noble Denton / Atlas Professionals / Tidewater Marine / DOF Subsea / BW Offshore / SBS Peterson

## Location

Horizons House is situated on Waterloo Quay overlooking the vibrant dock and in the heart of Aberdeen Harbour.

Occupiers already in Horizons House are DOF Subsea, BW Offshore and Ampelmann.

The subjects are located a short walk away from Aberdeen City Centre, the Beach Esplanade & retail parks and Union Square, Aberdeen's premier retail & leisure destination, where the main bus and train stations are situated.



## Walking Distances

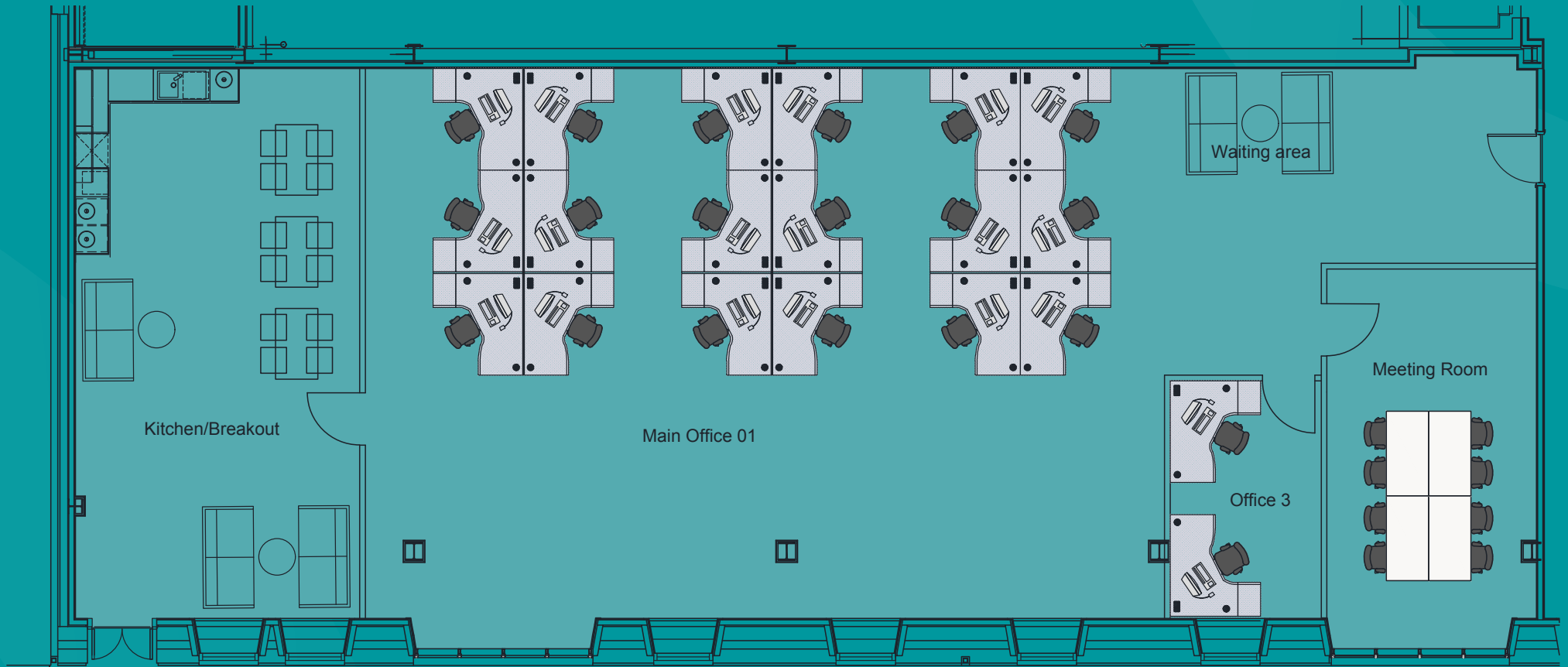
Queens Links Leisure Park.....	9 min	Union Square.....	16 min
Beach Boulevard Retail Park.....	9 min	Bus & Train Station.....	16 min
Pure Gym / IBIS Hotel.....	10 min		



Waterloo Quay development is situated next door to Horizons House and is a commercial hub for the area. Facilities include, meeting & conference rooms with IT support, restaurant serving a range of meals & snacks throughout the day, fully equipped gym with 2 squash courts and cycle hire.

**HORIZONS  
HOUSE**

## Indicative Ground Floor Layout



HORIZONS  
HOUSE

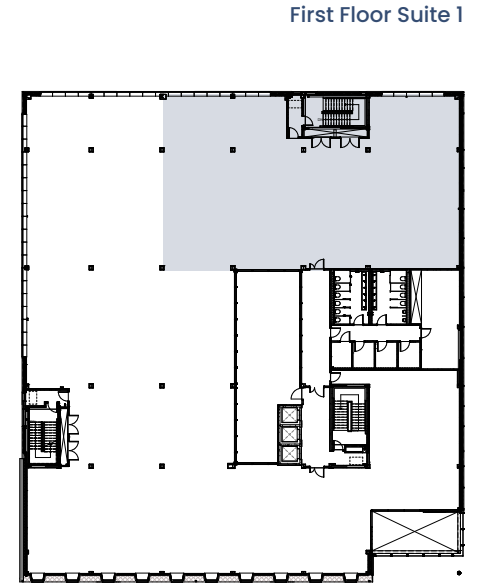
## Summary Specification

The available accommodation comprise the ground floor suite and part of the first floor.

An impressive double height, fully staffed, reception area provides a striking entrance to Horizons House, while superb natural light is provided through the full height glazed atrium in the heart of the building.

Completed in 2015, the premises provide Grade 'A' office accommodation to include the following specification:

- BREEM rating "Very Good" and EPC Rating of 'A'
- Full comfort and cooling
- Open plan flexible floor plates
- 150 mm raised access flooring
- 2.7m floor to ceiling height
- 3 high speed passenger lifts
- Shared meeting rooms on ground floor
- Secured car parking with CCTV



## Accommodation

The property provides the following accommodation, measured on a Net Internal Basis:

Ground Floor Suite	256.00 sq. m	(2,756 sq. ft)
First Floor Suite 1	412.50 sq. m	(4,440 sq. ft)
<b>Total</b>	<b>668.50 sq. m</b>	<b>(7,196 sq. ft)</b>

HORIZONS  
HOUSE

# HORIZONS HOUSE

## Lease Terms

The ground and part first floor are available to let, either together or separately. Leases will be on Full Repairing and Insuring terms for a period to be agreed.

## Rent

On application.

## Service Charge

Further details on request.

## VAT

All prices quoted in this schedule are exclusive of VAT.

## Rating

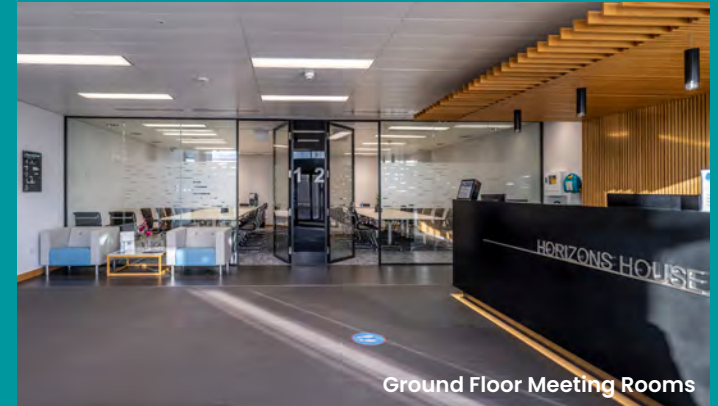
The current Rateable Values for the suites are as follows:

**Ground floor** £44,500

**First floor** £72,000

## EPC/BREEAM

EPC rating of 'A' and BREEAM rating "Very Good".



Ground Floor Meeting Rooms



First Floor Suite



Atrium



Indicative CGI of Ground Floor



## Legal Costs

Each party will bear their own legal costs. The ingoing tenant will be liable for LBTT and registration dues in the normal manner.

## Entry

Immediate, upon conclusion of legal missives.

## Further Information

For further information or to arrange to view please contact the joint letting agents. Whilst viewing is highly recommended, a Virtual Tour can also be seen by scanning the below code.

HORIZONS  
HOUSE



Scan to watch  
Virtual Tour

## Viewings & Offers

Strictly by arrangement through the joint letting agents, to whom all offers should be submitted in Scottish Legal form.

**MATT PARK**  
matthew.park@knightfrank.com  
07810 599964

**CHRIS ION**  
chris.ion@g-s.co.uk  
07717 425298

**LEAN BARRON**  
lean.barron@knightfrank.com  
07800 916216

**SHONA BOYD**  
shona.boyd@g-s.co.uk  
07741 314 188



**Disclaimer.** Knight Frank LLP and Graham + Sibbald on its behalf and for the Vendors or Lessors of this property, whose Agents they are, give notice that: These particulars are set out as a general outline only for guidance to intending Purchasers or Lessees, and do not constitute any part of an offer or contract. Details are given without any responsibility and any intending Purchasers, Lessees or Third Parties should not rely on them as statements or representations of fact, but must satisfy themselves by inspection or otherwise as to the correctness of each of them. No person in the employment of Knight Frank LLP and Graham + Sibbald has any authority to make any representation or warranty whatsoever in relation to this property. Unless otherwise stated, all priced and rents are quoted exclusive of VAT. Date of publication: July 2025.