



Office Space For Lease

MORRISON DRIVE

1140 Morrison Drive & 1150 Morrison Drive
Ottawa, ON

**LOCATED IN OTTAWA'S PRIME WEST-END HIGHWAY
CORRIDOR**



Highlights

- Two adjacent buildings in a high-demand commercial area of Ottawa
- Strategically located near major transportation routes including Highway 417 & OC Transpo
- Ample on-site parking for tenants and visitors
- Flexible zoning suitable for a wide range of uses: office, light industrial, service commercial
- Well-maintained premises with modern upgrades and professional curb appeal



Source: <https://www.loopnet.ca/Listing/1140-Morrison-Dr-Ottawa-ON>

1140 Morrison Dr.

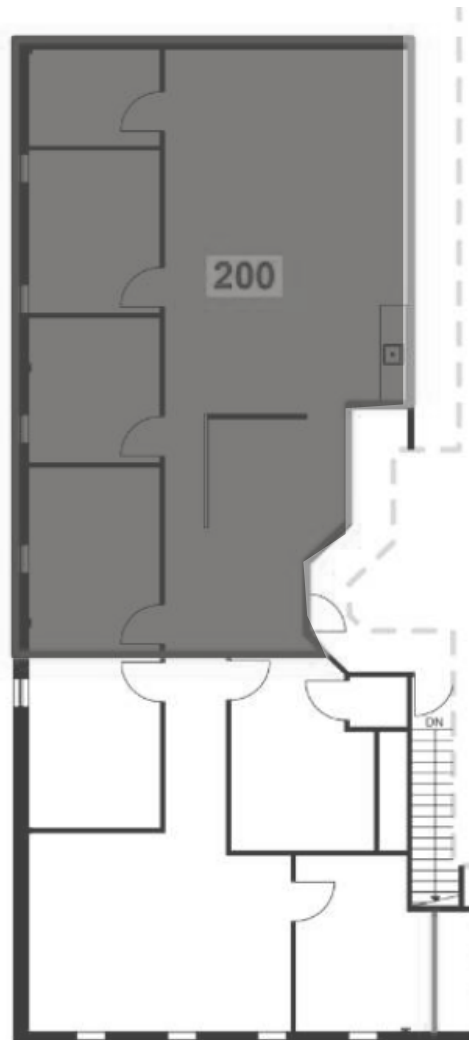
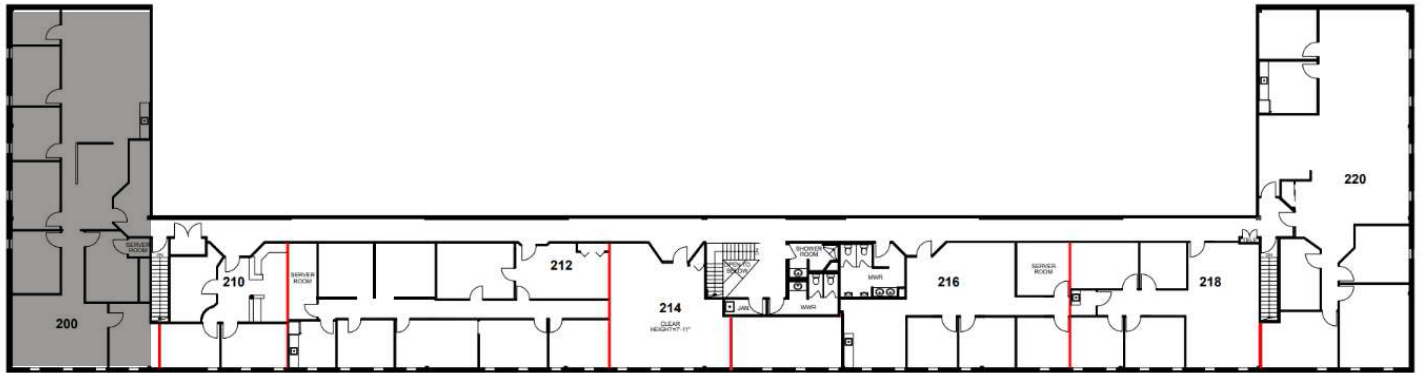
Property Overview

Building Size:	54,627 SF
	110: 5,933 SF Warehouse space
	200: 1,663 SF
	201: 1,140 SF
Available Units	210: 813 SF
	200/201/210: 3,616 SF
	214: 721 SF
	218: 1,366 SF
Net Rent:	\$13.00
Additional Rent:	\$11.88 PSF + HST (2025 Est.)
Available:	Immediately

2nd Floor

UNIT 200: 1,663 SF

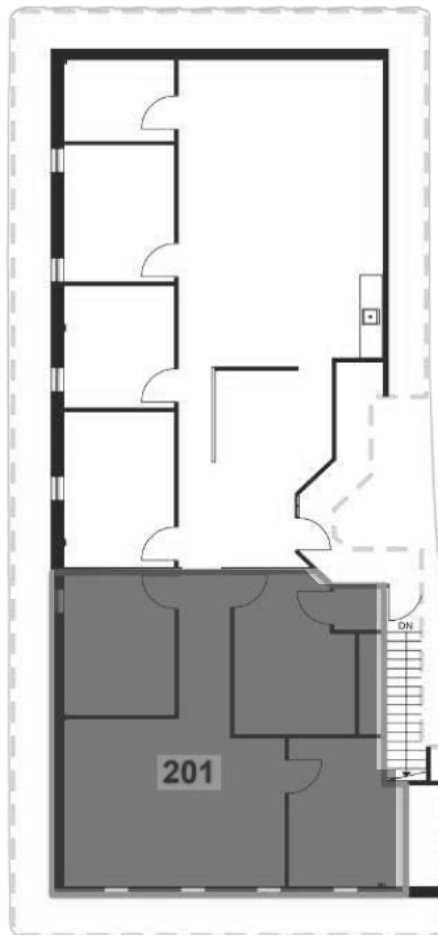
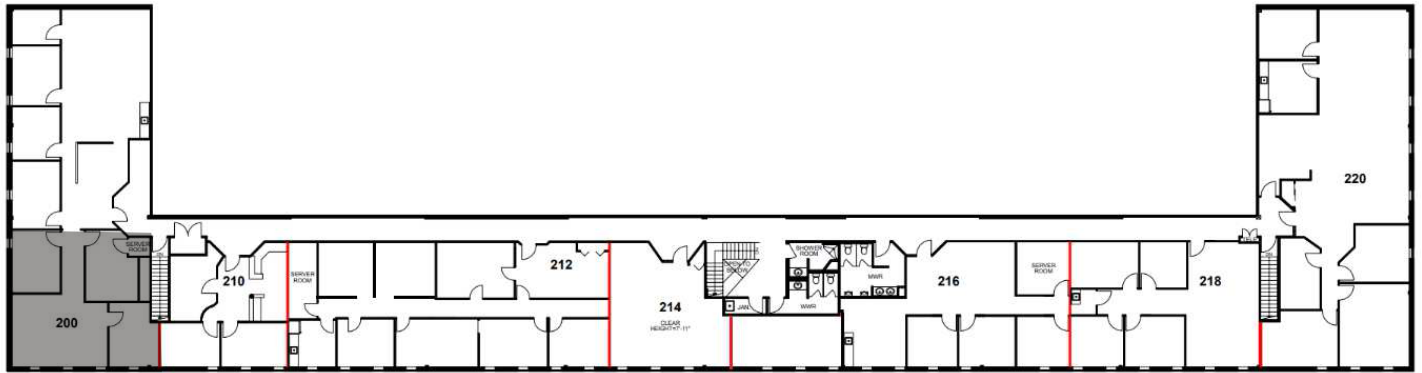
CONTIGUOUS WITH UNIT 201 & UNIT 210



2nd Floor

UNIT 201: 1,140 SF

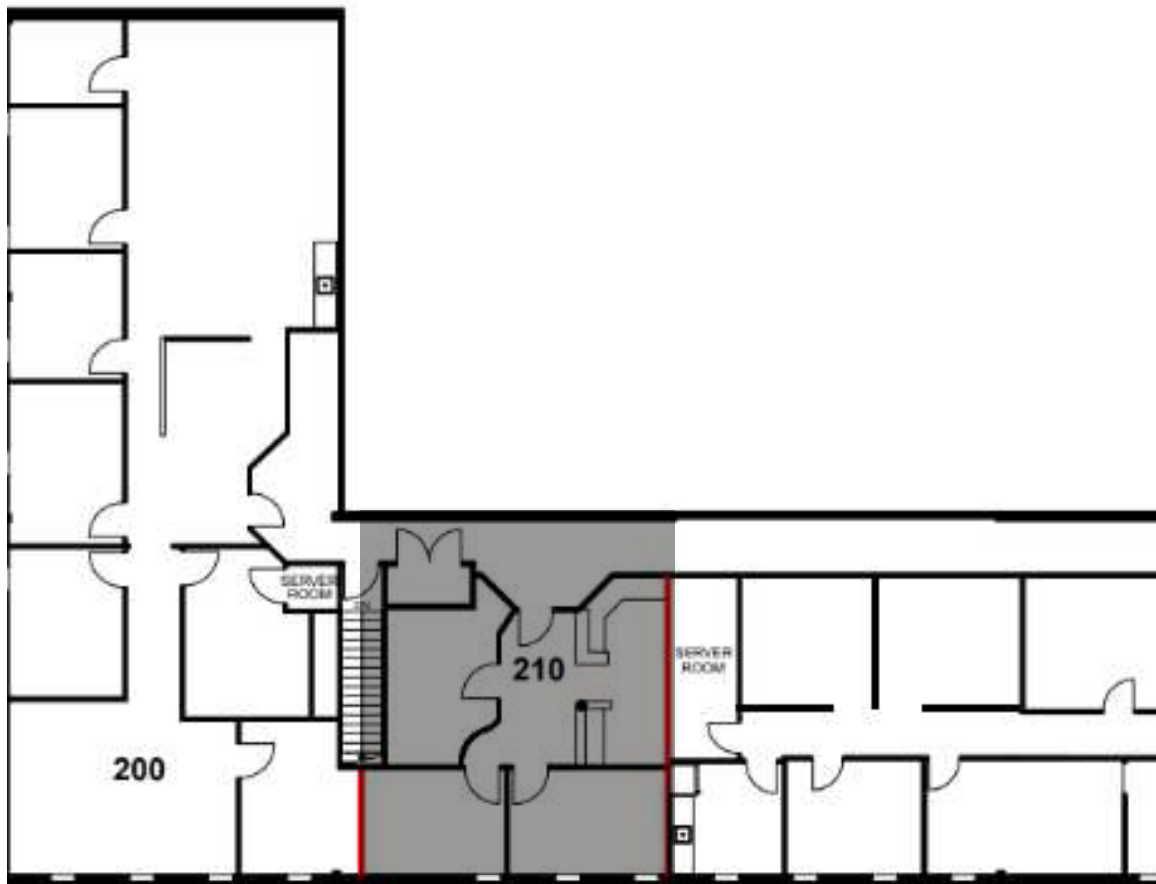
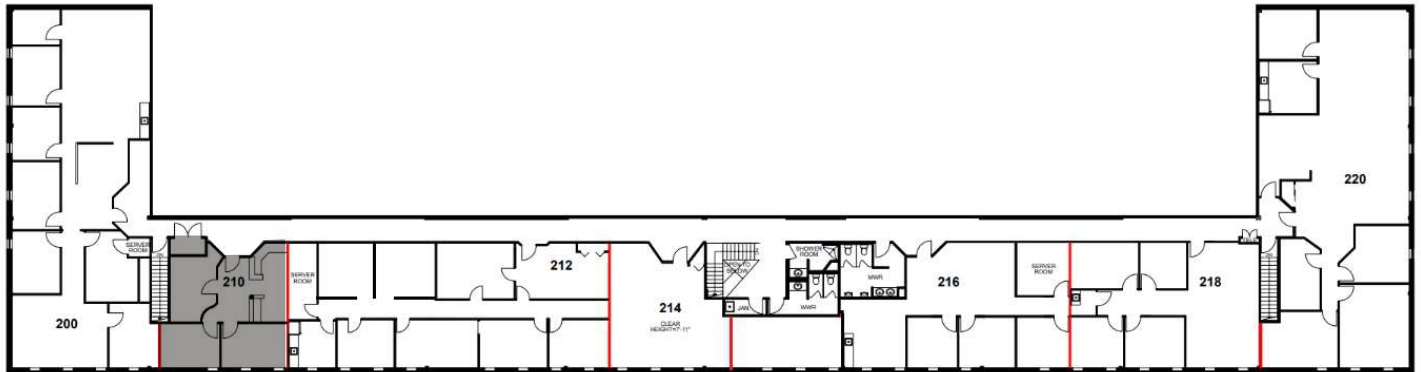
CONTIGUOUS WITH UNIT 200 & UNIT 210



2nd Floor

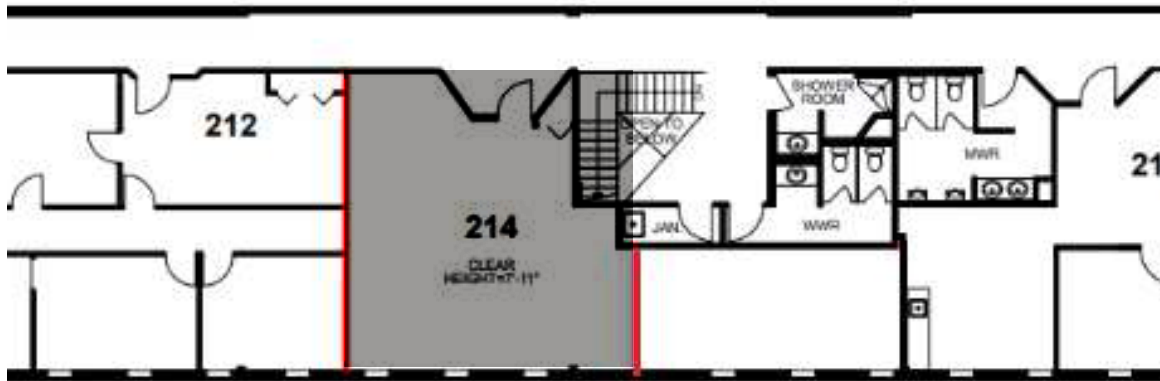
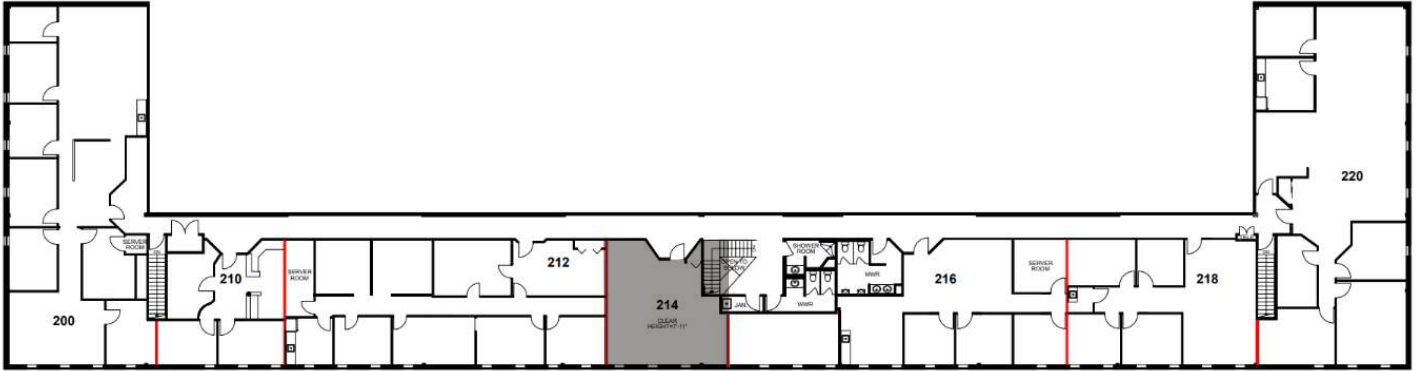
UNIT 210: 813 SF

CONTIGUOUS WITH UNIT 200 & UNIT 201



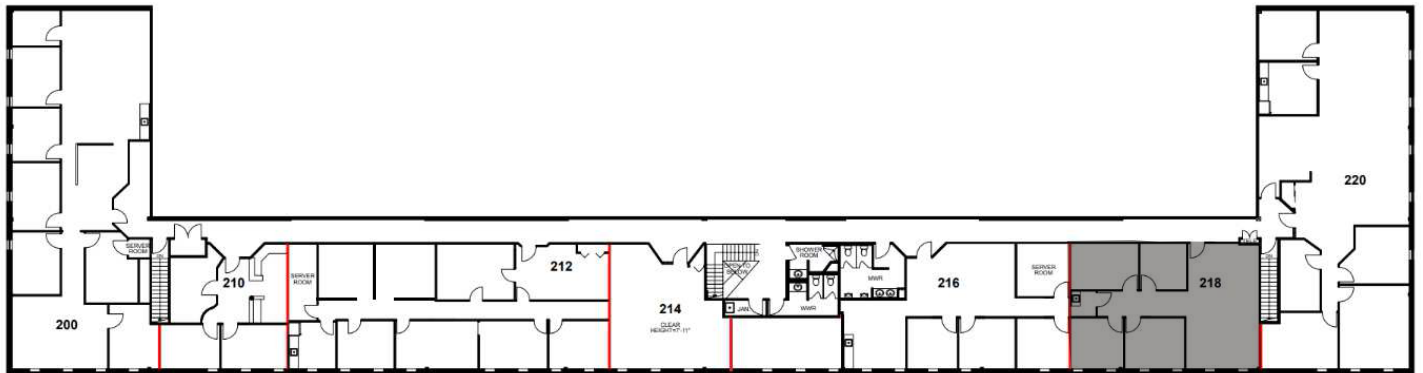
2nd Floor

UNIT 214: 721 SF



2nd Floor

UNIT 218: 1,366 SF





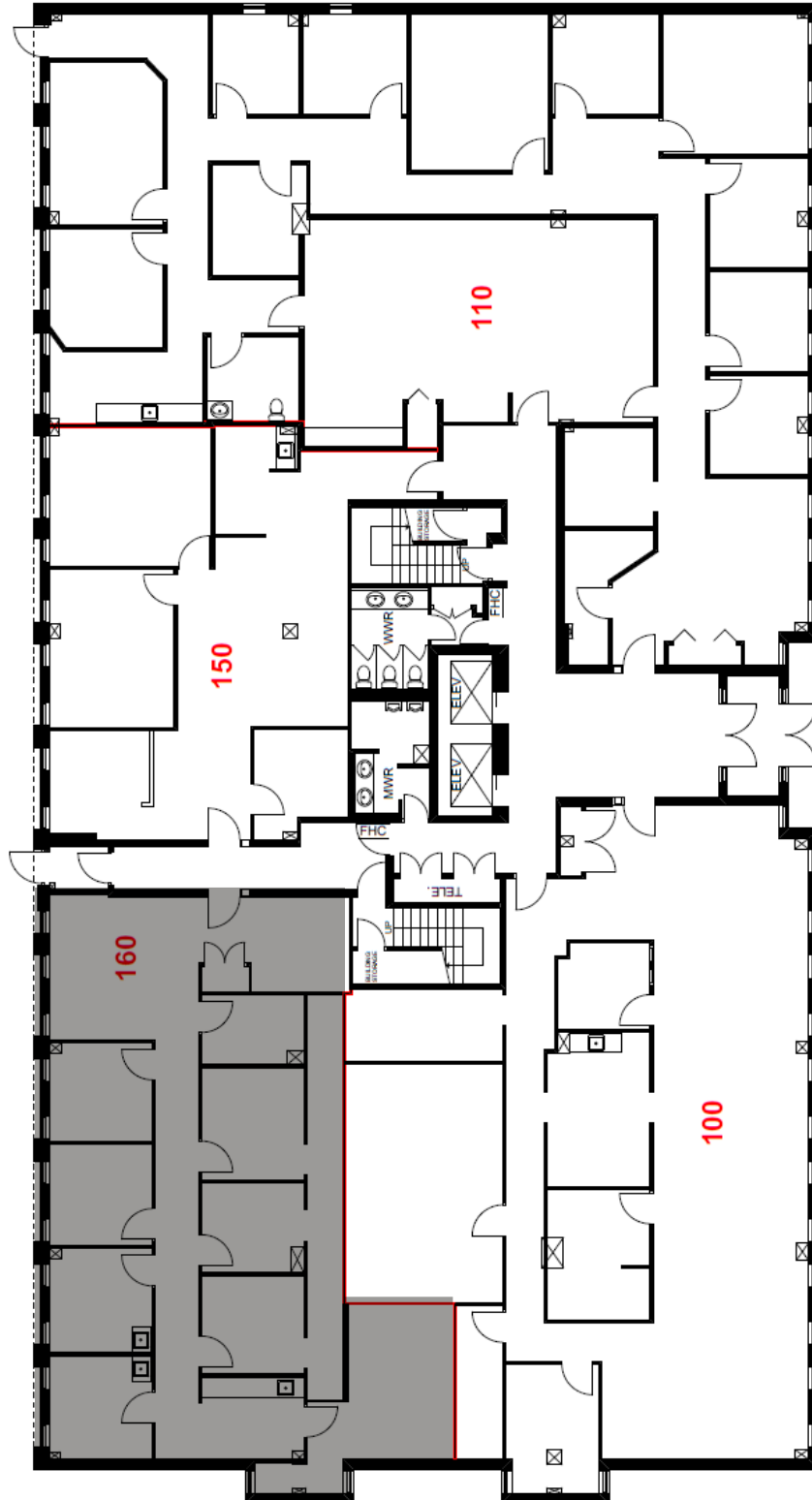
Source: <https://www.loopnet.ca/Listing/1150-Morrison-Dr-Ottawa>

1150 Morrison Dr. Property Overview

Building Size:	40,530SF
	160: 1,875 SF
	200: 1,194 SF
	201: 2,184 SF
Available Units	203: 1,302 SF
	206: 2,442 SF
	201/206: 4,626 SF
	301: 1,423 SF (available April 1, 2027)
	303: 1,345 SF
	410: 7,032 SF (available January 1, 2027)
Net Rent:	\$15.00
Additional Rent:	\$13.12 PSF + HST (2026 Est.)

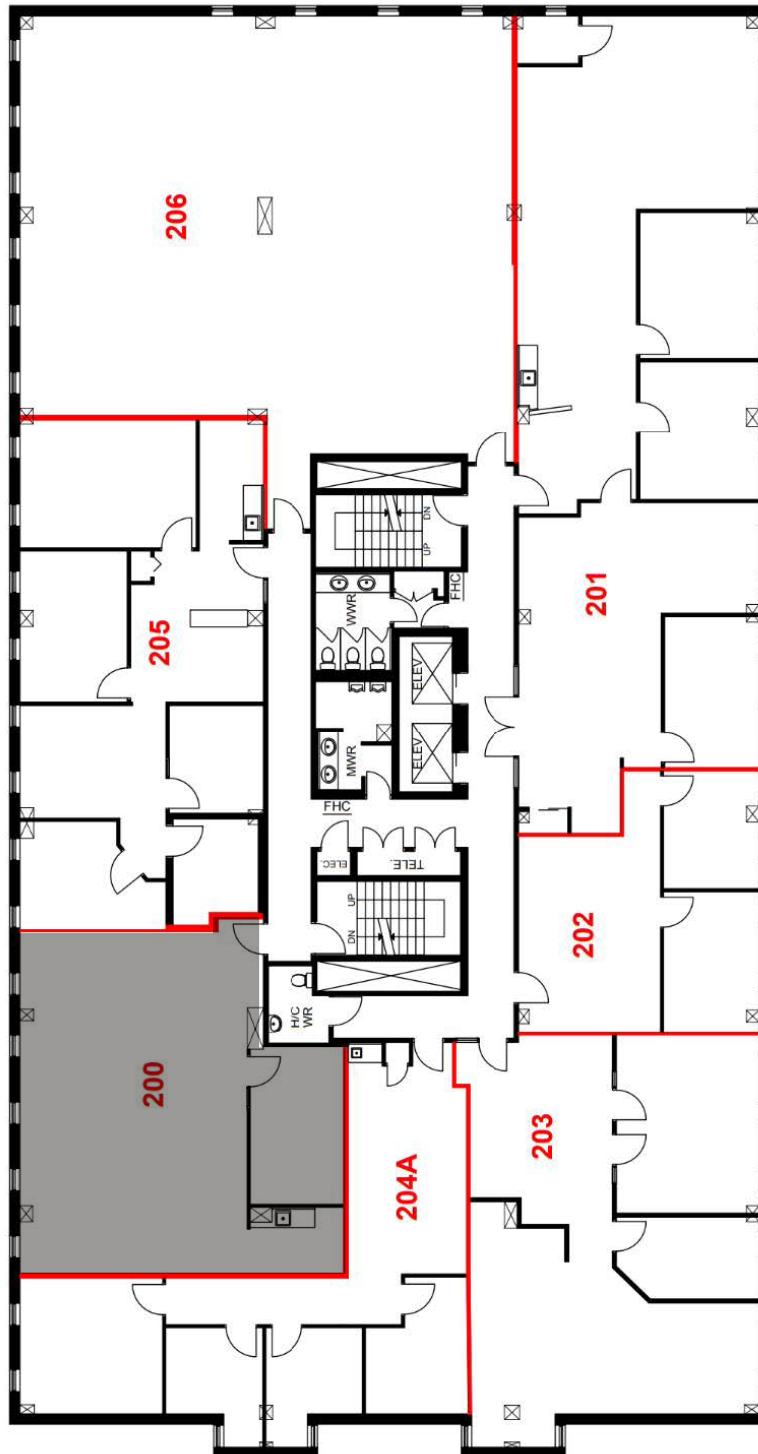
Ground Floor

UNIT 160: 1,875 SF



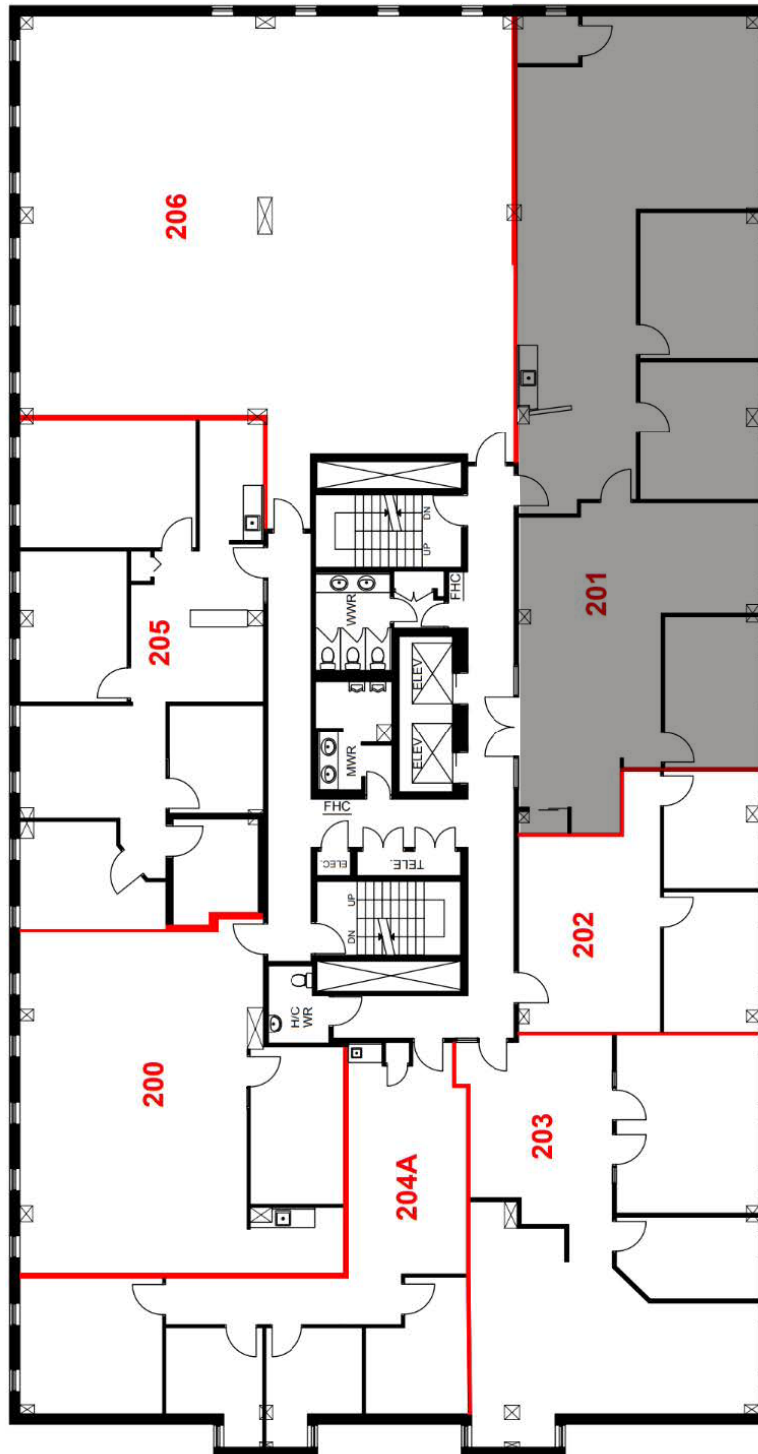
2nd Floor

UNIT 200: 1,194 SF



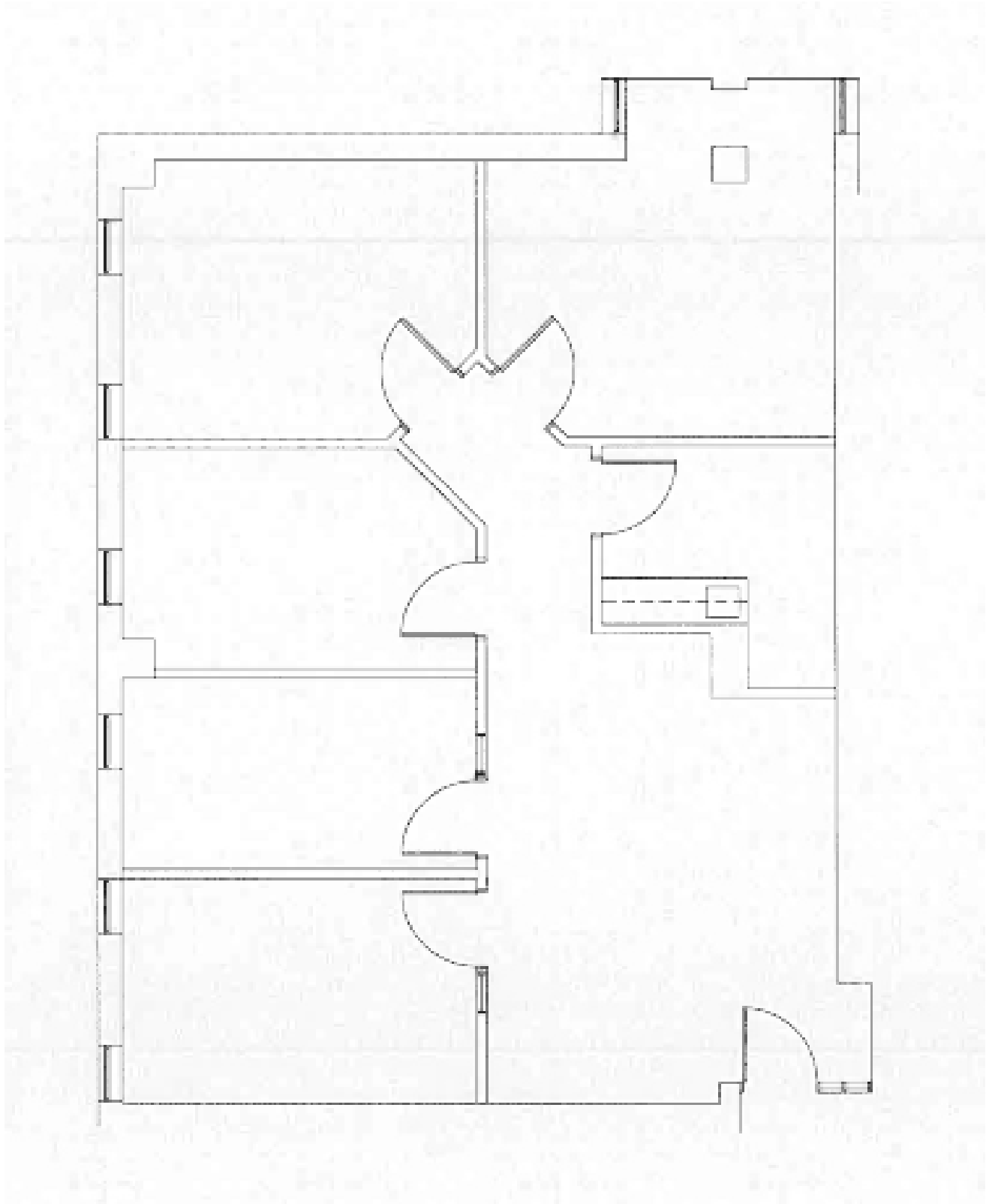
2nd Floor

UNIT 201: 2,184 SF
CONTIGUOUS WITH UNIT 206



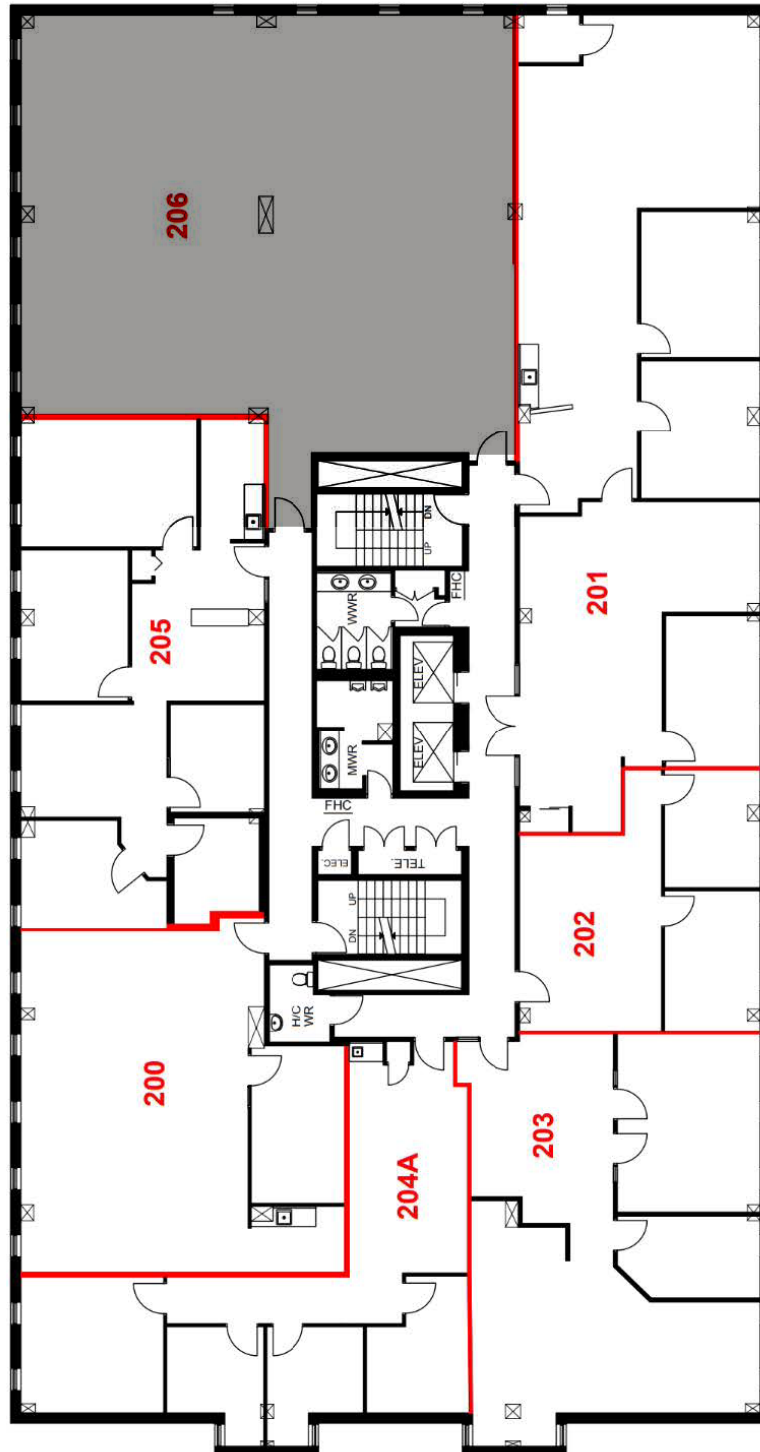
2nd Floor

UNIT 203: 1,302 SF



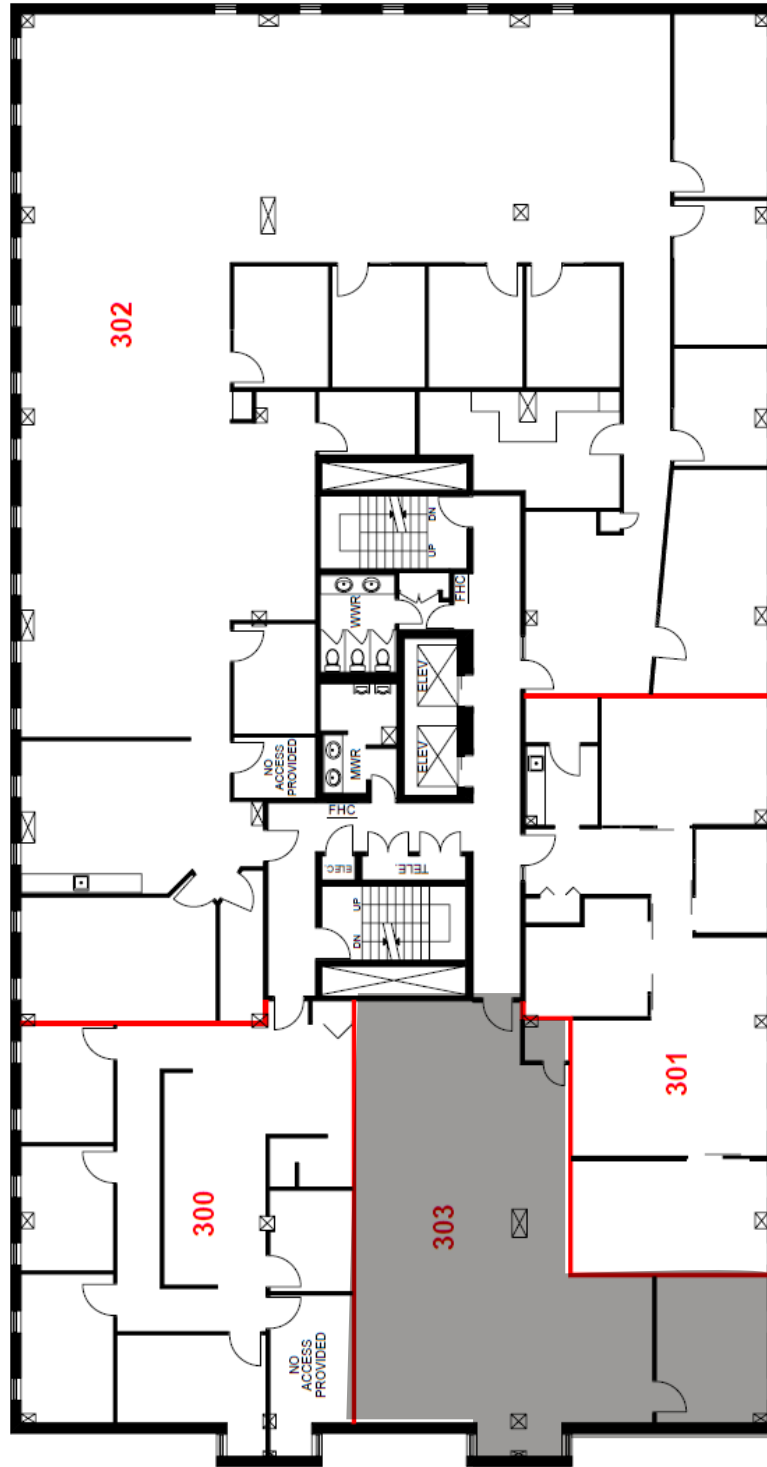
2nd Floor

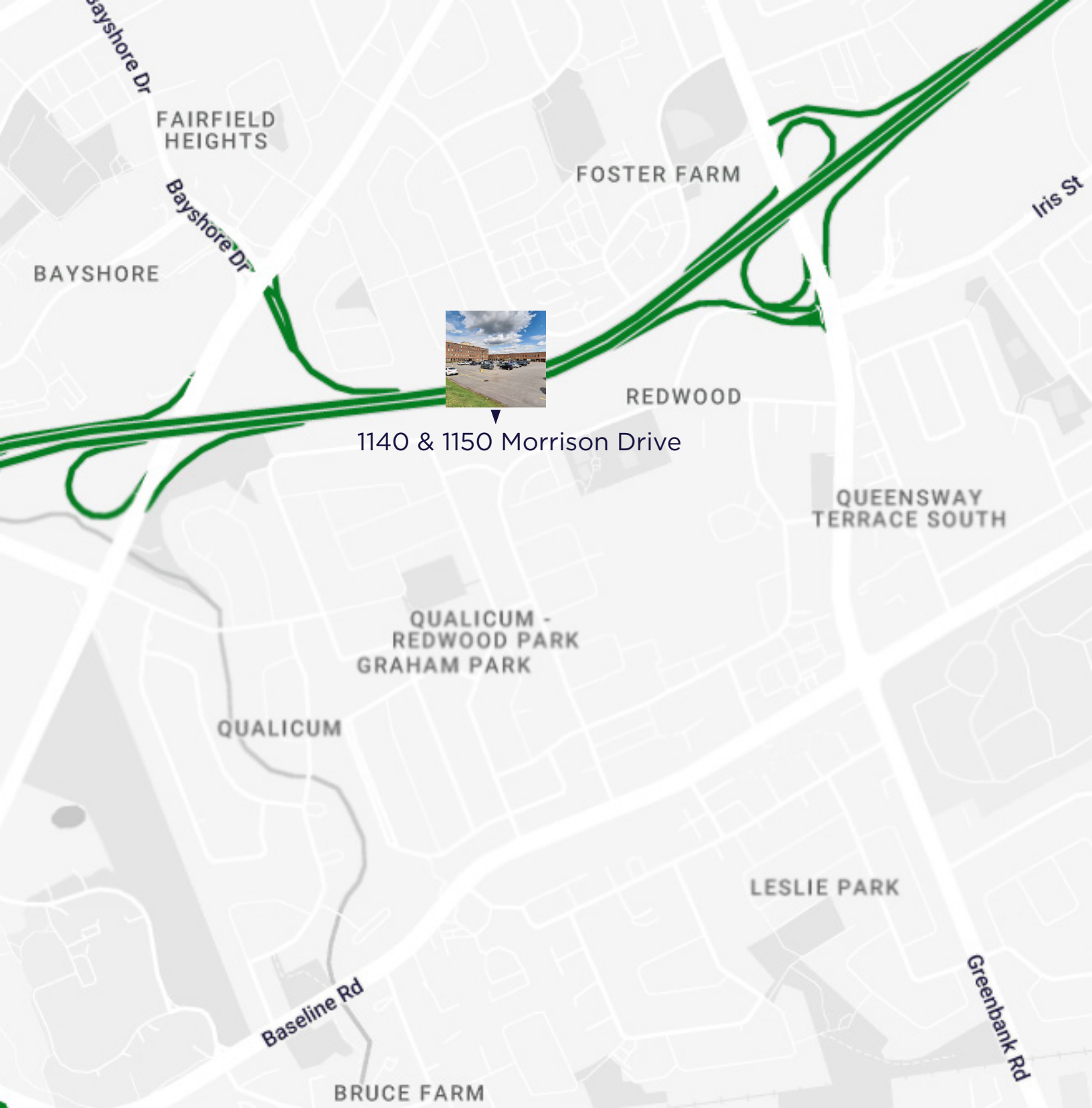
UNIT 206: 2,442 SF
CONTIGUOUS WITH UNIT 201



3rd Floor

UNIT 303: 1,345 SF





1140 & 1150 Morrison Drive

CONTACT INFORMATION

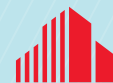
JESSICA WHITING*

Vice President

+1 613 780 1597

jwhiting@cwottawa.com

**Broker *Sales Representative



**CUSHMAN &
WAKEFIELD**

Ottawa

©2026 Cushman & Wakefield Ottawa. Brokerage, Independently Owned and Operated. All rights reserved. The information contained in this communication is strictly confidential. This information has been obtained from sources believed to be reliable but has not been verified. NO WARRANTY OR REPRESENTATION, EXPRESS OR IMPLIED, IS MADE AS TO THE CONDITION OF THE PROPERTY (OR PROPERTIES) REFERENCED HEREIN OR AS TO THE ACCURACY OR COMPLETENESS OF THE INFORMATION CONTAINED HEREIN, AND SAME IS SUBMITTED SUBJECT TO ERRORS, OMISSIONS, CHANGE OF PRICE, RENTAL OR OTHER CONDITIONS, WITHDRAWAL WITHOUT NOTICE, AND TO ANY SPECIAL LISTING CONDITIONS IMPOSED BY THE PROPERTY OWNER(S). ANY PROJECTIONS, OPINIONS OR ESTIMATES ARE SUBJECT TO UNCERTAINTY AND DO NOT SIGNIFY CURRENT OR FUTURE PROPERTY PERFORMANCE.